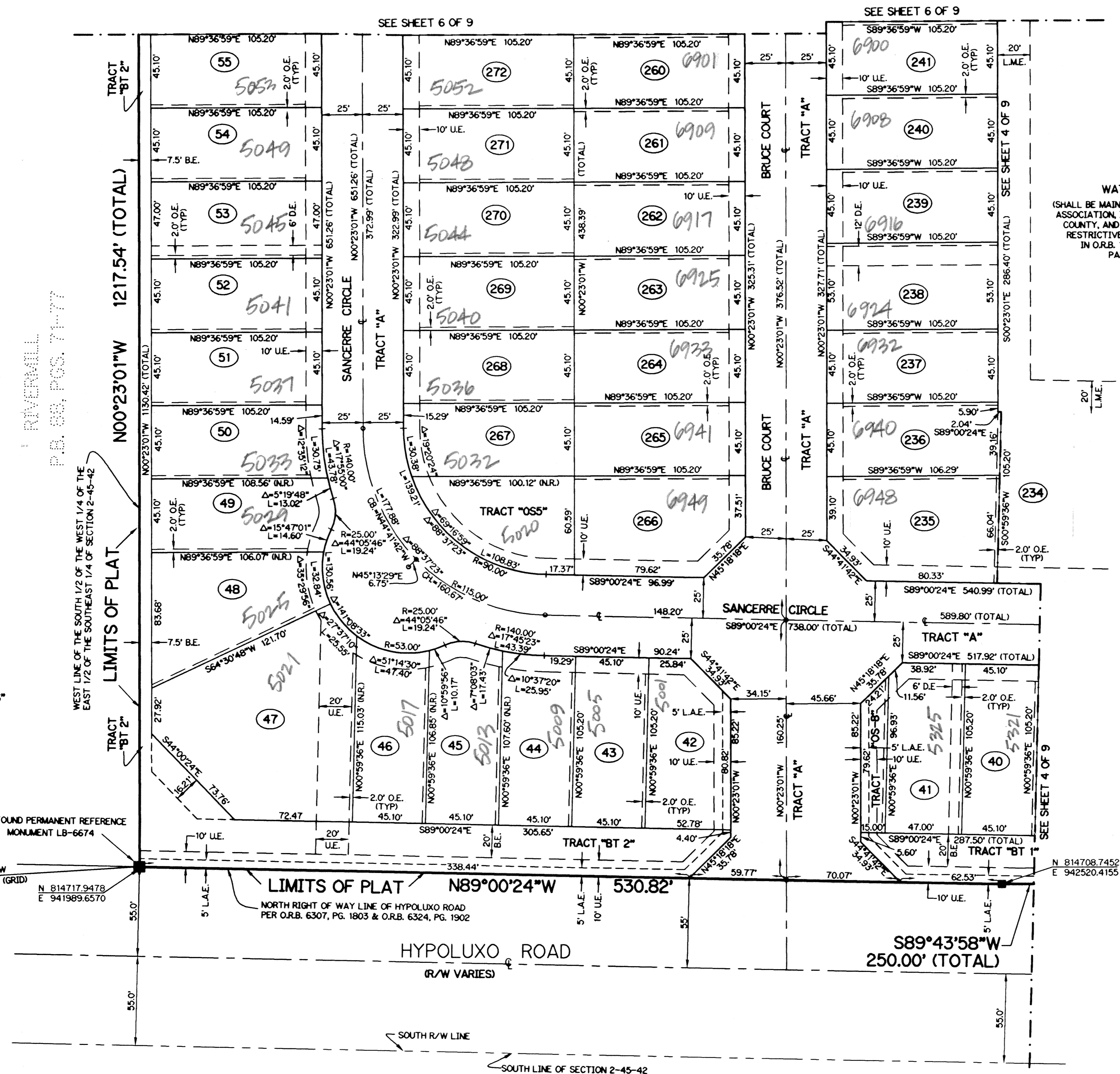
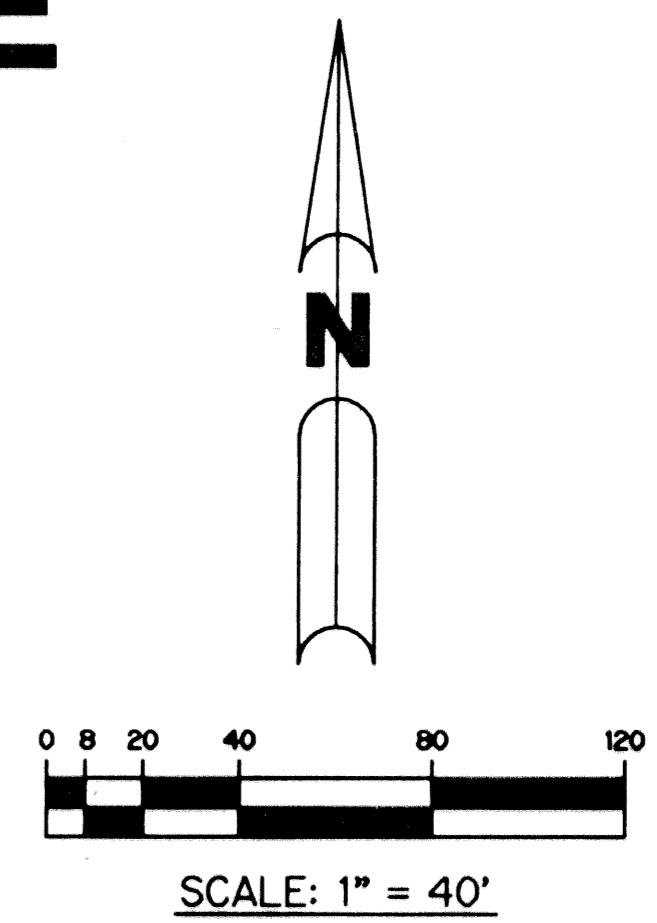


HYPOLUXO/HAVERHILL P.U.D. - PLAT ONE

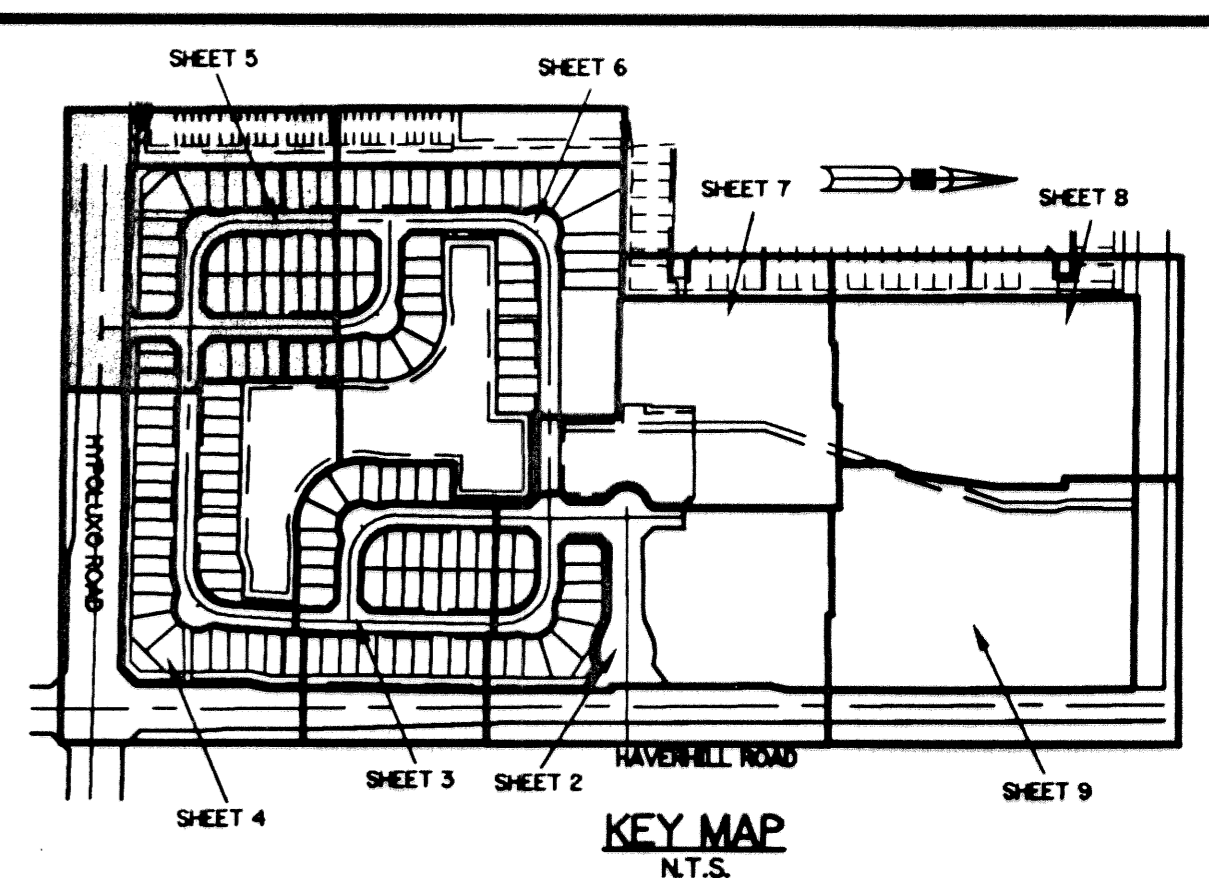
PLANNED UNIT DEVELOPMENT
A PARCEL OF LAND LYING IN
SECTION 2, TOWNSHIP 45 SOUTH, RANGE 42 EAST,
PALM BEACH COUNTY, FLORIDA.
SHEET 5 OF 9 AUGUST, 2001



TRACT "L1"
WATER MANAGEMENT TRACT
(SHALL BE MAINTAINED BY COCOPUM PROPERTY OWNERS
ASSOCIATION, INC. WITHOUT RECOURSE TO PALM BEACH
COUNTY, AND SUBJECT TO EXISTING LITTORAL ZONE
RESTRICTIVE COVENANT AGREEMENT AS RECORDED
IN O.R.B. 12822, PG. 299, PUBLIC RECORDS OF
PALM BEACH COUNTY, FLORIDA)
5.89 ACRES

- NOTE:**
COORDINATES SHOWN ARE GRID COORDINATES
DATUM = NAD 83 (1990 ADJUSTMENT)
ZONE = FLORIDA EAST ZONE
LINEAR UNIT = U.S. SURVEY FEET
COORDINATE SYSTEM 1983 STATE PLANE
TRANSVERSE MERCATOR PROJECTION
ALL DISTANCES ARE GROUND
SCALE FACTOR = 1.00034481
NO ROTATION PLAT BEARING = GRID BEARING
- LEGEND:**
- - SET PERMANENT REFERENCE MONUMENT, LB-6674
 - - PERMANENT CONTROL POINT, LB-6674
 - △ - DELTA ANGLE
 - B.E. - BUFFER EASEMENT
 - C. - CENTERLINE
 - C.B. - CHORD BEARING
 - C.L. - CHORD LENGTH
 - D.B. - DEED BOOK
 - D.E. - DRAINAGE EASEMENT
 - L. - ARC LENGTH
 - L.A.E. - LIMITED ACCESS EASEMENT
 - L.M.A.E. - LAKE MAINTENANCE ACCESS EASEMENT
 - L.M.E. - LAKE MAINTENANCE EASEMENT
 - L.W.D.D. - LAKE WORTH DRAINAGE DISTRICT
 - N.R. - NOT RADIAL
 - N.T.S. - NOT TO SCALE
 - O.R.B. - OFFICIAL RECORD BOOK
 - P.B. - PLAT BOOK
 - P.S. - PAGES
 - P.S.M. - PROFESSIONAL SURVEYOR AND MAPPER
 - R. - RADIUS
 - R/W - RIGHT-OF-WAY
 - S.T. - SURVEY TIE
 - U.E. - UTILITY EASEMENT
 - O.E. - OVERHANG EASEMENT
 - N 814602.8657
E 785753.1680 - DENOTES STATE PLANE COORDINATES

THIS INSTRUMENT PREPARED BY
WILBUR F. DIVINE, P.S.M. 4190, STATE OF FLORIDA
LAWSON, NOBLE AND WEBB, INC., LB-6674
ENGINEERS PLANNERS SURVEYORS
420 COLUMBIA DRIVE, SUITE 110
WEST PALM BEACH, FLORIDA



STATION HYPOLUXO/HAVERHILL P.U.D.
BOOK 94 PAGE 35
FLOOD MAP # 115B
QUAD # 34 ZONING PUD
TAZ 434 ZIP CODE 33463
PUD NAME HYPOLUXO/HAVERHILL

PALM BEACH COUNTY
BRASS DISK "INDIAN PINES"
N 820812.8920
E 937364.3180

FOUND PERMANENT REFERENCE
MONUMENT LB-6674

PALM BEACH COUNTY
BRASS DISK "E-3 HYPO"
N 814633.4500
E 940689.2210