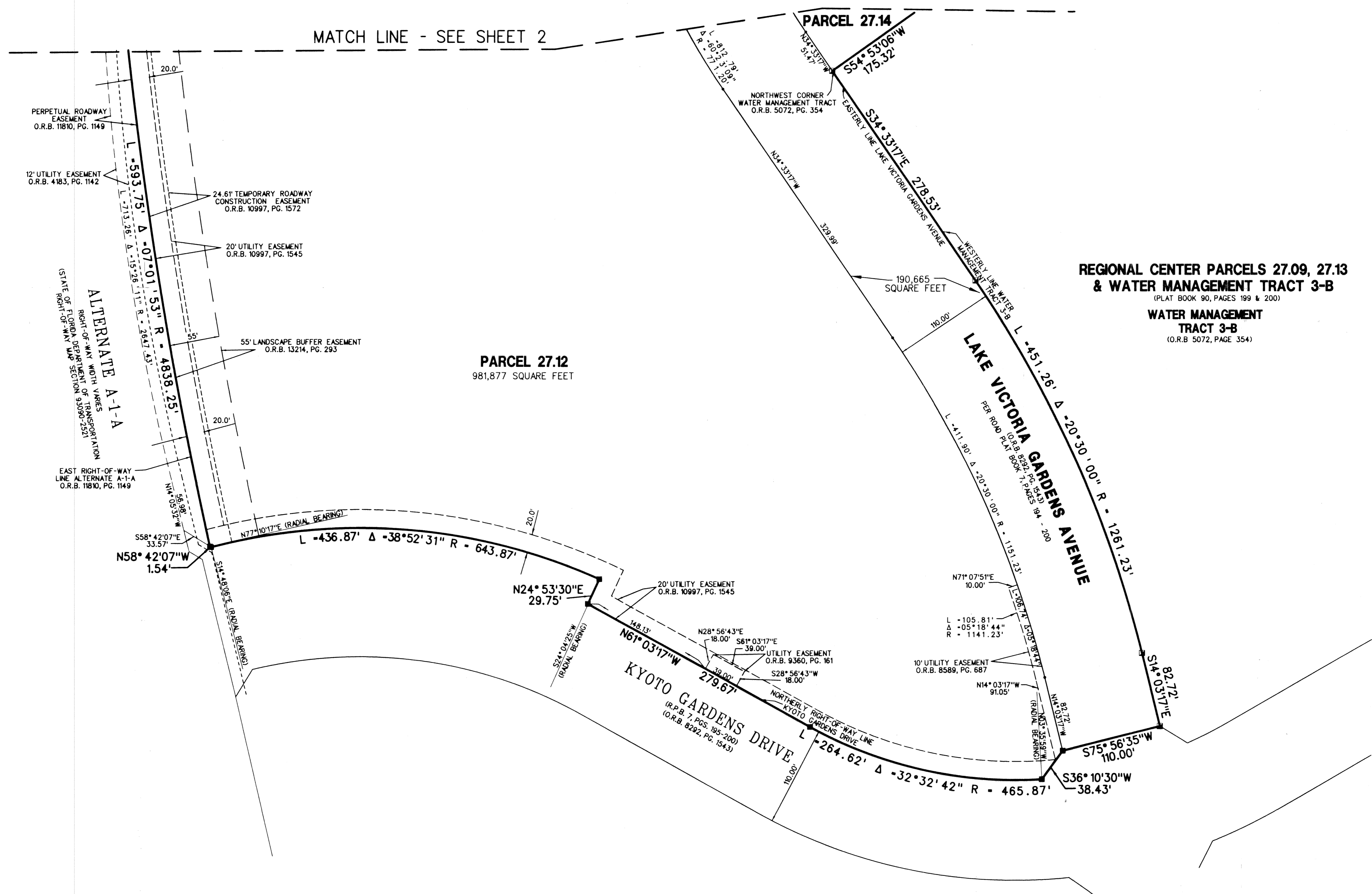


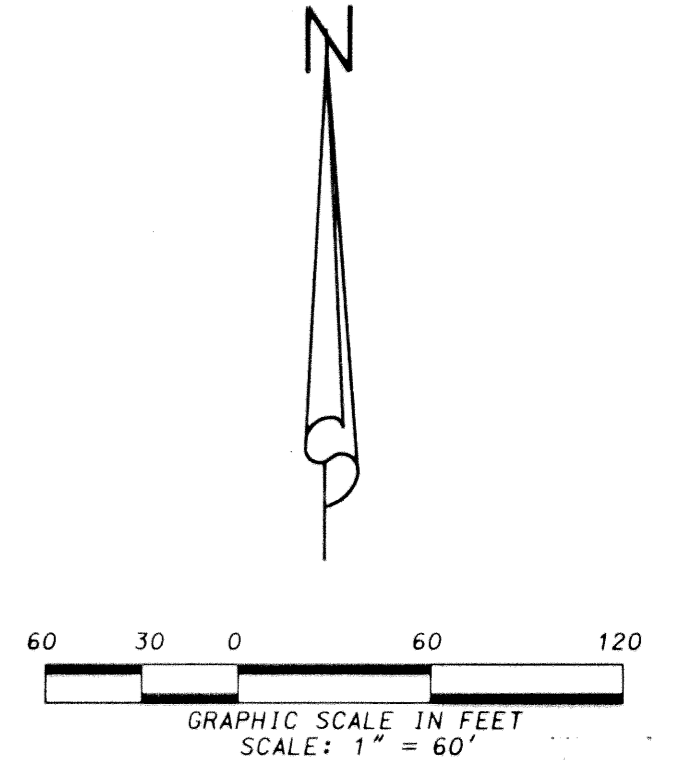
# REGIONAL CENTER PARCELS 27.12, 27.14 AND LAKE VICTORIA GARDENS AVENUE

SITUATE IN SECTION 6, TOWNSHIP 42 SOUTH, RANGE 43 EAST, CITY OF PALM BEACH GARDENS, PALM BEACH COUNTY, FLORIDA  
SEPTEMBER, 2001 SHEET 3 OF 3



**REGIONAL CENTER PARCELS 27.09, 27.13 & WATER MANAGEMENT TRACT 3-B**  
(PLAT BOOK 90, PAGES 199 & 200)

**WATER MANAGEMENT TRACT 3-B**  
(O.R.B. 5072, PAGE 354)



- ABBREVIATIONS:
- CB = CHORD BEARING
  - DE = DELTA
  - D.B. = DEED BOOK
  - D.E. = DRAINAGE EASEMENT
  - F.P.L. = FLORIDA POWER & LIGHT COMPANY
  - L = ARC LENGTH
  - L.A.E. = LIMITED ACCESS EASEMENT
  - N.P.B.C.I.D. = NORTHERN PALM BEACH COUNTY IMPROVEMENT DISTRICT
  - O.R.B. = OFFICIAL RECORD BOOK
  - P.B. = PLAT BOOK
  - P.B.C. = PALM BEACH COUNTY
  - PG. = PAGE
  - P.O.B. = POINT OF BEGINNING
  - P.S.M. = PROFESSIONAL SURVEYOR AND MAPPER
  - R = RADIUS
  - R.P.B. = ROAD PLAT BOOK
  - P.E. = PEDESTRIAN EASEMENT
  - DENOTES A SET 4"x4" CONCRETE MONUMENT STAMPED "PRM LB 4431" PERMANENT REFERENCE MONUMENT (P.R.M.), UNLESS OTHERWISE NOTED.
  - DENOTES A FOUND 4"x4" CONCRETE MONUMENT STAMPED "PRM LB 4431" PERMANENT REFERENCE MONUMENT (P.R.M.), UNLESS OTHERWISE NOTED.

**LIDBERG LAND SURVEYING, INC.**

675 West Indiantown Road, Suite 200, Jupiter, Florida 33458 TEL. 561-746-8454

CAD: K:\USTATION \ SECTION \ 06-42-43 \ 0801306 \ 0801306.DGN			
REF.			
FLD.	FB.	PG.	JOB 01-080(306)
OFF. L.J.C.			DATE 07/03/01
CKD. D.C.L.	SHEET 3	OF 3	DWG. 001-080P