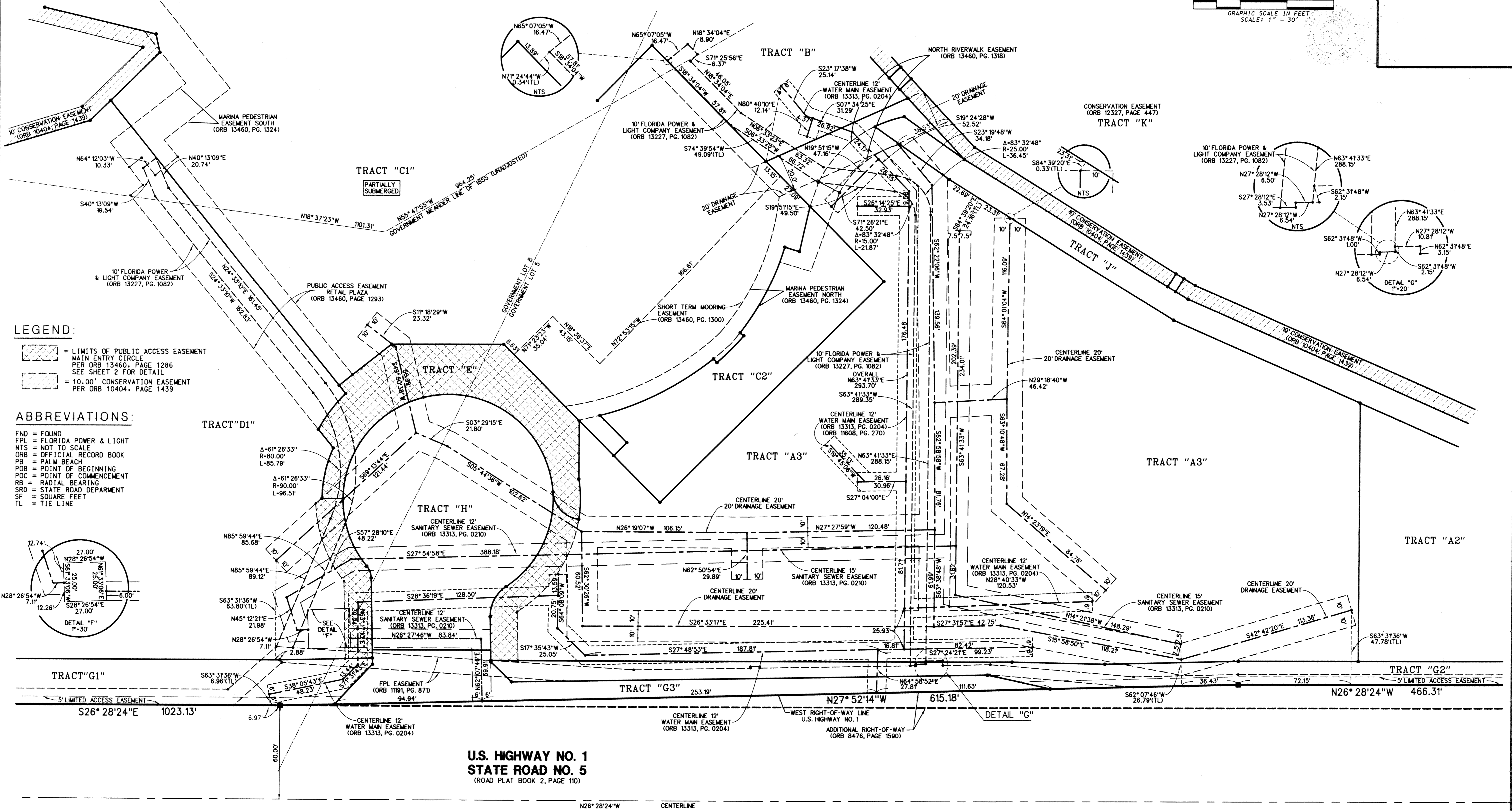
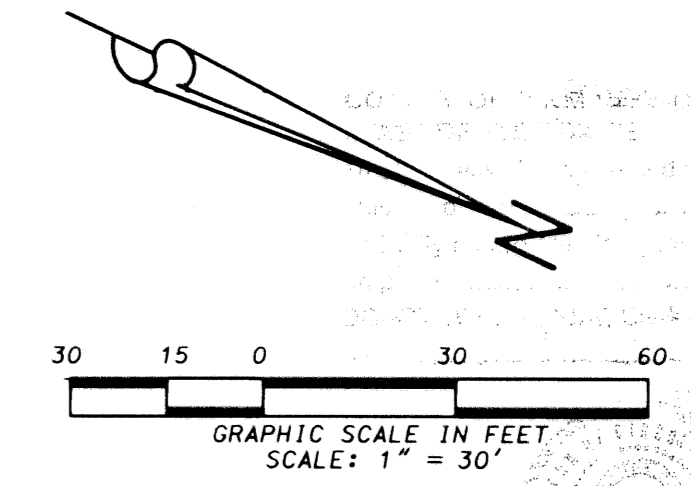


# JUPITER YACHT CLUB

BEING A PORTION OF SECTION 6, TOWNSHIP 41 SOUTH, RANGE 43 EAST,  
TOWN OF JUPITER, PALM BEACH COUNTY, FLORIDA

FEBRUARY, 2002

SHEET 9 OF 9



**LEGEND:**

- = LIMITS OF PUBLIC ACCESS EASEMENT PER ORB 13460, PAGE 1286 SEE SHEET 2 FOR DETAIL
- = 10.00' CONSERVATION EASEMENT PER ORB 10404, PAGE 1439

**ABBREVIATIONS:**

- FND = FOUND
- FPL = FLORIDA POWER & LIGHT
- NTS = NOT TO SCALE
- ORB = OFFICIAL RECORD BOOK
- PB = PALM BEACH
- POB = POINT OF BEGINNING
- POC = POINT OF COMMENCEMENT
- RB = RADIAL BEARING
- SRD = STATE ROAD DEPARTMENT
- SF = SQUARE FEET
- TL = TIE LINE

**LIDBERG LAND SURVEYING, INC.**

675 West Indiantown Road, Suite 200,  
Jupiter, Florida 33458 TEL: 561-746-8454

|  |         |      |                |
|--|---------|------|----------------|
| CAD: K:\UST \ 064143 \ JYC \ 2717306 \ DETAILSHEET.DGN |         |      |                |
| REF: K:\UST \ 064143 \ JYC \ 2717306 \ 2717306.DGN     |         |      |                |
| FLD.   | FB.     | PG.  | JOB 97-271-306 |
| OFF. L.J.C.  |         |      | DATE 01/17/02  |
| CKD. D.C.L.  | SHEET 9 | OF 9 | DWG. D97-271P  |

\\jc\2717306\DETAILSHEET.dgn 03/01/02 10:08:22 AM