

# FOREST MILITARY PLAT M.U.P.D.

BEING A PARCEL OF LAND IN THE SECTION 13, TOWNSHIP 44 SOUTH, RANGE 42 EAST, PALM BEACH COUNTY, FLORIDA

53

FOUND PALM BEACH COUNTY DISC  
NORTHWEST CORNER SECTION 13  
TOWNSHIP 44 SOUTH  
RANGE 42 EAST  
N=842,274.6580  
E=943,432.5260

(BEARING BASE)  
S88°47'49"E 2671.41'

NORTH LINE, NORTHWEST 1/4, SECTION 13

40' LAKE WORTH DRAINAGE DISTRICT CANAL LATERAL NO. 8 (80' R/W)

NORTH 266.36' OF N 3/4,  
N 1/2, NE 1/4, NW 1/4

UNPLATTED

TRACT "A"  
283,159 SQ.FT.

NORTH 1/4 CORNER SECTION 13  
SECTION 13, TOWNSHIP 44 SOUTH  
RANGE 42 EAST  
FOUND PALM BEACH COUNTY DISC  
LB 6770  
N=842218.5630  
E=946103.3490

106' RIGHT-OF-WAY  
PER F.D.O.T. R/W MAP S.R.809  
SECTION 93590-2603  
REVISED 11-29-94

C/L R/W PER F.D.O.T.  
R/W MAP FOR STATE  
ROAD 809, SECTION  
93590-2603  
REVISED 11-29-94

SET WITNESS PRM  
2.00' WEST  
N=841,953.4814  
E=946,039.9083

WEST R/W LINE OF MILITARY TRAIL  
PER ORB 1116, PAGES  
523-526, PBCR

30' R/W BUFFER (TYPICAL)

REDUCED R/W BUFFER AREA  
SEE DETAIL "B"

5' LIMITED ACCESS EASEMENT

SET WITNESS PRM  
2.00' WEST  
N=841,714.7675  
E=946,035.2053

SOUTH 1/4 CORNER SECTION 13  
SECTION 13, TOWNSHIP 44 SOUTH  
RANGE 42 EAST  
SET NAIL & DISC  
LB 6770  
N=836835.0710  
E=945944.0470

TRINIDAD ESTATES  
PLAT BOOK 31, PAGE 154

LOT 4

LOT 5

LOT 11

LOT 10

LOT 9

LOT 8

LOT 28

LOT 27

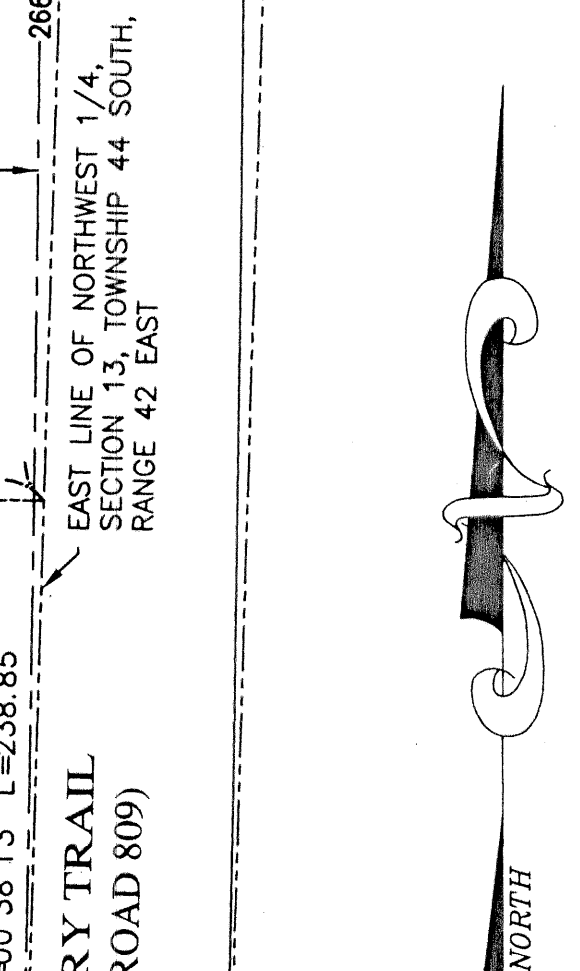
LOT 26

LOT 25

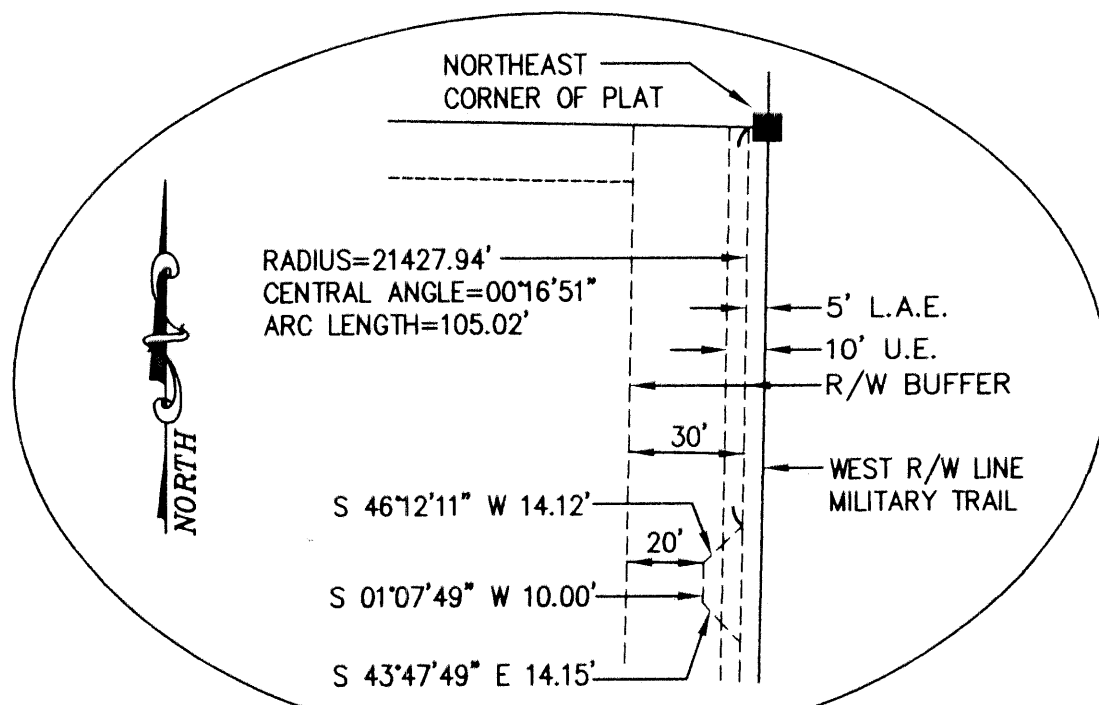
LOT 10

PALMA PARK  
PLAT BOOK 28, PAGE 11

BUSH & MOHNEY'S ADDITION  
PLAT BOOK 21, PAGE 49

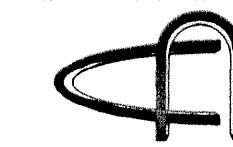


GRAPHIC SCALE  
(IN FEET)  
1" = 50'



DETAIL "B" - REDUCED R/W  
BUFFER AREA  
(NOT TO SCALE)

## FOREST MILITARY PLAT M.U.P.D.



CARNEY-NEUHAUS, INC.  
LB6770

11811 U.S. HIGHWAY 1, SUITE 120  
PALM BEACH, FLORIDA 33408  
TEL: (561) 852-1100  
FAX: (561) 852-1101  
EMAIL: CN@CARNEY.COM

3000 BISCAYNE BOULEVARD, SUITE 200  
FORT LAUDERDALE, FLORIDA 33309  
TEL: (954) 742-8800  
FAX: (954) 742-8800  
EMAIL: CN@CARNEY.COM

4101 N. ANDREWS AVE., SUITE 213  
FORT LAUDERDALE, FLORIDA 33309  
TEL: (954) 742-8800  
FAX: (954) 742-8800  
EMAIL: CN@CARNEY.COM

FIELD PROJ. # 01-049 F.B. PG.

OFFICE R.J.K. DATE: 09-11-01 DWG. NO. SHEET 2

C'KD: TB REF: SHEET: 2 of 2