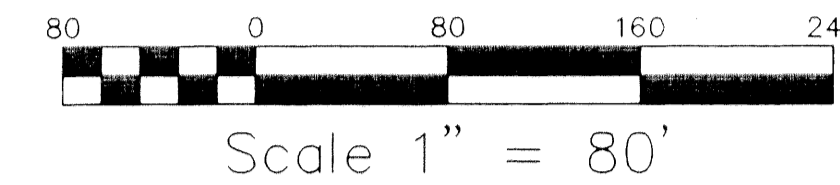
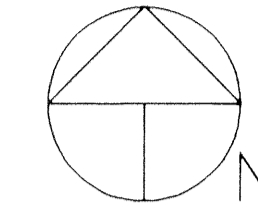
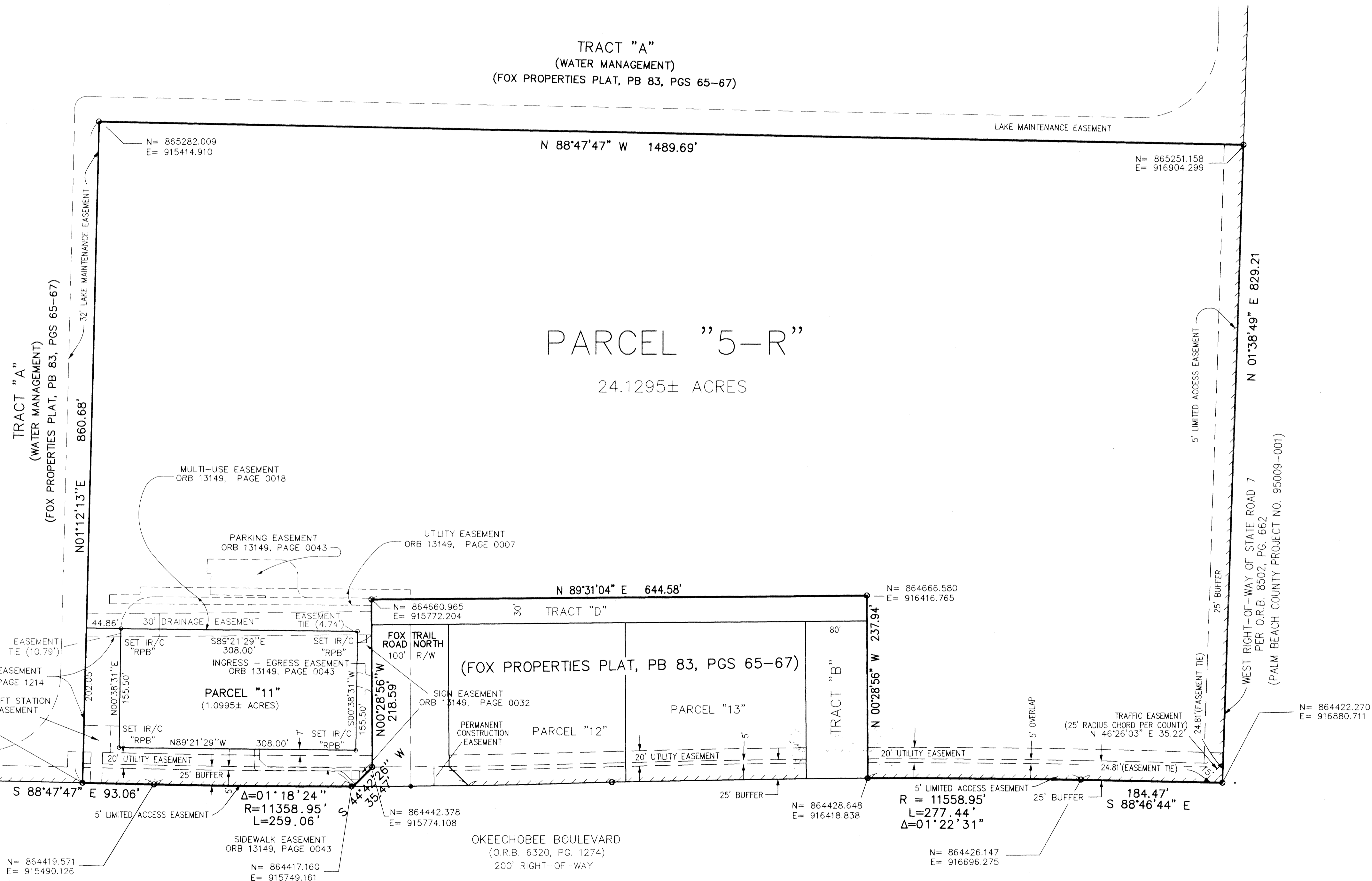


# Fox Properties Parcel '5' Replat

A REPLAT OF PARCEL '5' OF FOX PROPERTIES PLAT  
 AS RECORDED IN PLAT BOOK 83, PAGES 65 THRU 67  
 BEING A PART OF AN M.U.P.D.  
 LYING IN SECTION 24, TOWNSHIP 43 SOUTH, RANGE 41 EAST  
 PALM BEACH COUNTY, FLORIDA  
 FEBRUARY 2002  
 SHEET 2 OF 2



- NOTES:
- 1)  $\odot$  DENOTES PERMANENT REFERENCE MONUMENT (P.R.M.) "LS 4133" SET OR (FOUND).
  - 2)  $\odot$  DENOTES PERMANENT CONTROL POINT (PCP) "LS 4133".
  - 3) BEARINGS BASED UPON THE WEST LINE OF PARCEL "5" OF FOX PROPERTIES PLAT BEING NORTH 01°12'13" EAST AS SHOWN HEREON.
  - 4) ALL PARCEL AND TRACT LINES ARE NON-RADIAL UNLESS OTHERWISE NOTED.
  - 5) ABBREVIATIONS:  
 PB = PLAT BOOK  
 PG(S) = PAGE  
 24-43S-41E = SECTION 24, TOWNSHIP 43 SOUTH RANGE 41 EAST  
 ORB = OFFICIAL RECORD BOOK  
 CL = CENTERLINE  
 ===== = 5' LIMITED ACCESS EASEMENT
  - 6) ALL EASEMENTS SHOWN ARE PER THE PLAT OF "FOX PROPERTIES" (83/65-67) UNLESS OTHERWISE NOTED.



STATE PLANE COORDINATE NOTES:  
 ALL DISTANCES ARE GROUND  
 SCALE FACTOR 1.0000160  
 COORDINATES SHOWN ARE GRID  
 DATUM = NAD 83 1990 ADJUSTMENT  
 ZONE = FLORIDA EAST  
 LINEAR UNIT = US SURVEY FEET  
 COORDINATE SYSTEM 1983 STATE PLANE  
 TRANSVERSE MERCATOR PROJECTION  
 GROUND DISTANCE X SCALE FACTOR = GRID  
 COORDINATES SHOWN ARE GRID  
 ROTATION EQUATION:  
 S88°48'13"E (PLAT BEARING) COUNTER  
 S88°49'14"E (GRID BEARING) = 00°01'01" CLOCKWISE  
 PLAT TO GRID

THIS INSTRUMENT WAS PREPARED BY ROBERT P. BLASZYK, PSM, IN THE OFFICES OF

**RPB Consulting, Inc.**  
 Land Surveying and Mapping

11211 Prosperity Farms Road, Suite C 301, Palm Beach Gardens, Florida 33410  
 Phone (561) 876-1110 Fax (561) 624-1569

NOTICE:  
 THIS PLAT AS RECORDED IN ITS GRAPHIC FORM, IS THE OFFICIAL DEPICTION OF THE SUBDIVIDED LANDS DESCRIBED HEREIN AND WILL IN NO CIRCUMSTANCES BE SUPPLANTED IN AUTHORITY BY ANY OTHER GRAPHIC OR DIGITAL FORM OF THE PLAT. THERE MAY BE ADDITIONAL RESTRICTIONS THAT ARE NOT RECORDED ON THIS PLAT THAT MAY BE FOUND IN THE PUBLIC RECORDS OF THIS COUNTY.