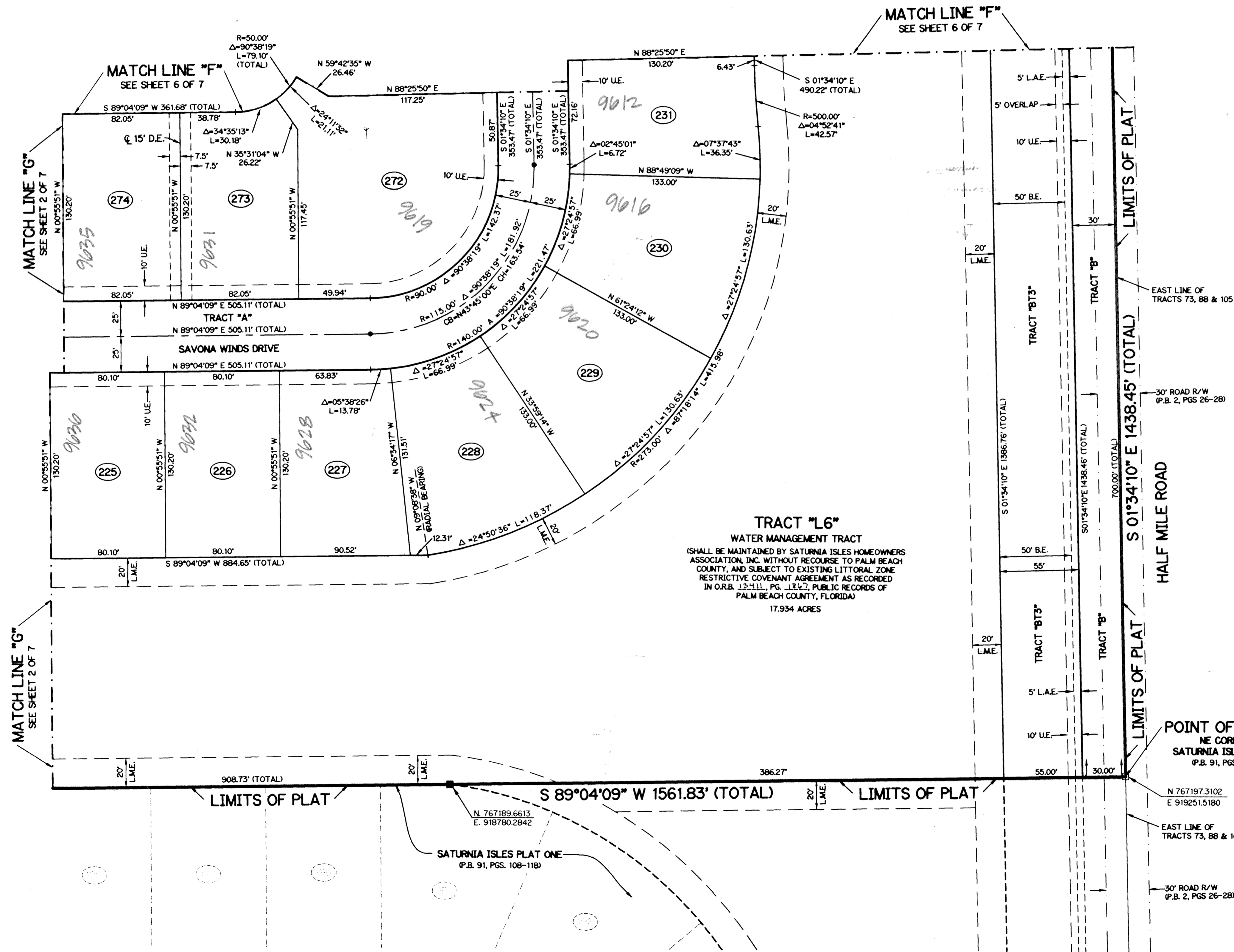
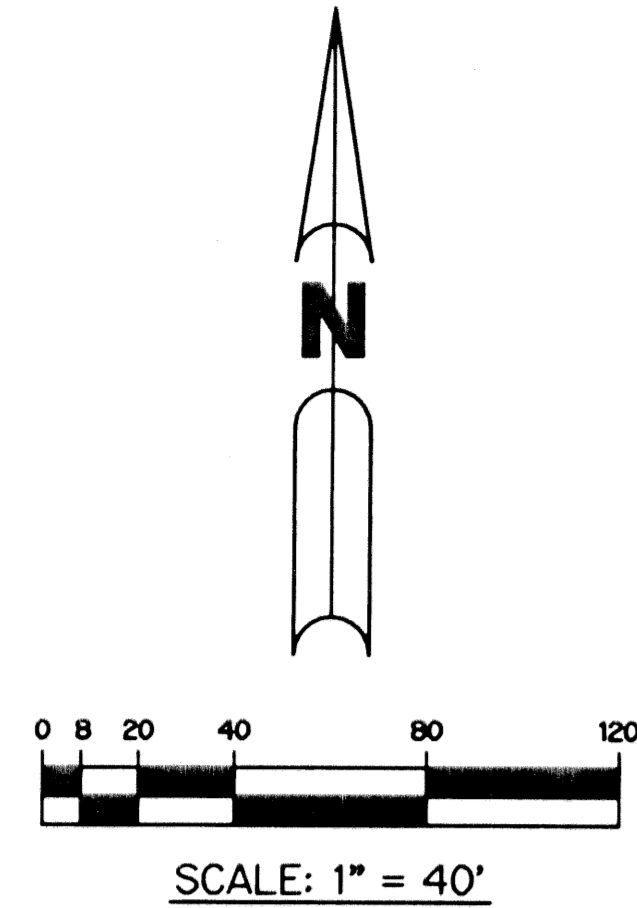


# SATURNIA ISLES - PLAT THREE

BEING A REPLAT OF ALL OF TRACTS 85 THROUGH 88 AND A PORTION OF TRACTS 73 THROUGH 76 AND TRACTS 105 THROUGH 108, SECTION 19, PALM BEACH FARMS COMPANY PLAT NO. 1 ACCORDING TO THE PLAT THEREOF RECORDED IN PLAT BOOK 2, PAGES 26 THROUGH 28 AND A PORTION OF BLOCKS 7 THROUGH 12, MILLER'S PARK, ACCORDING TO THE PLAT THEREOF RECORDED IN PLAT BOOK 4, PAGE 69 AND A PORTION OF BLOCK 6, MILLER'S PARK UNIT 2, ACCORDING TO THE PLAT THEREOF RECORDED IN PLAT BOOK 4, PAGE 75 ALL OF THE PUBLIC RECORDS OF PALM BEACH COUNTY, FLORIDA, LYING IN SECTION 19, TOWNSHIP 46 SOUTH, RANGE 42 EAST.

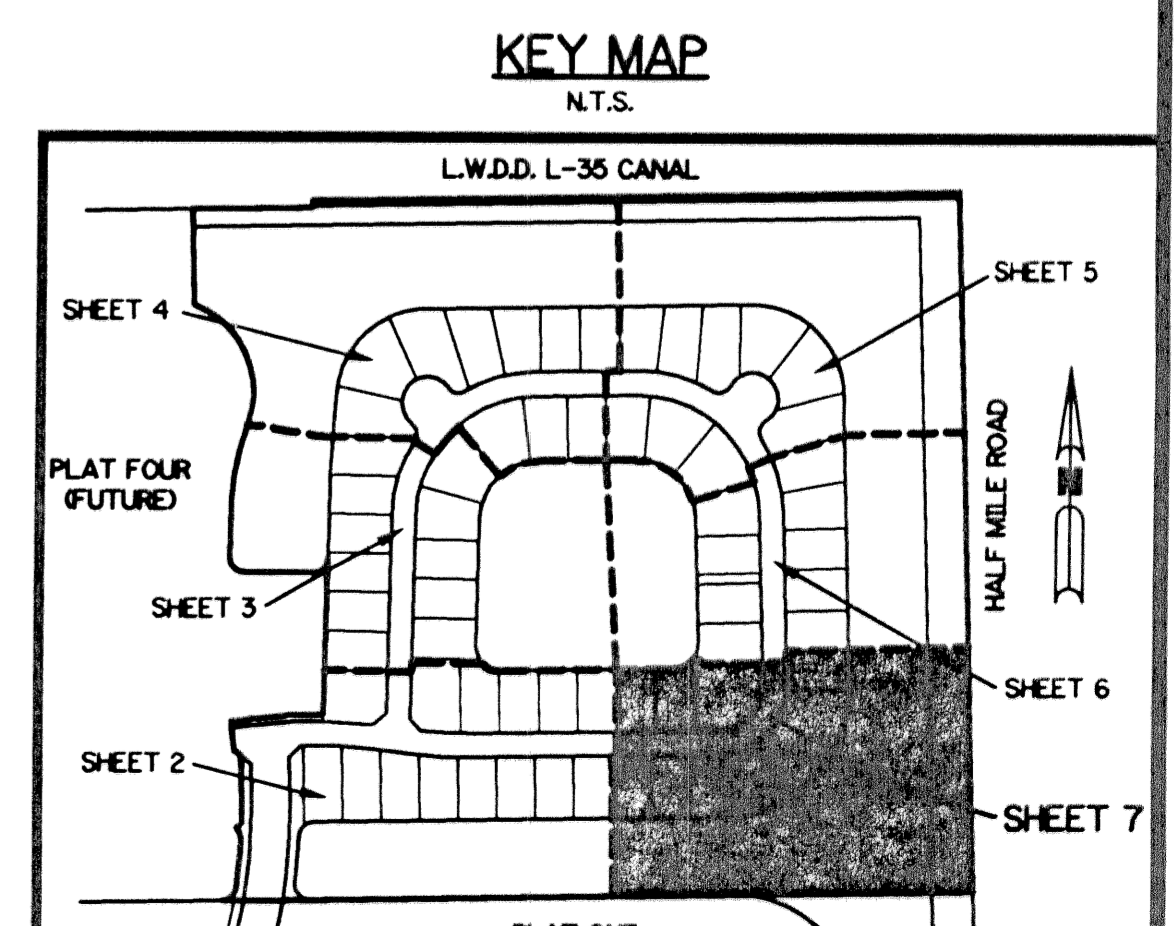
SHEET 7 OF 7 JANUARY, 2002

THIS INSTRUMENT PREPARED BY  
 PERRY C. WHITE, P.S.M. 4213, STATE OF FLORIDA  
 LAWSON, NOBLE AND WEBB, INC.  
 ENGINEERS PLANNERS SURVEYORS  
 420 COLUMBIA DRIVE  
 WEST PALM BEACH, FLORIDA 33409  
 LB-6674



- LEGEND:**
- - SET PERMANENT REFERENCE MONUMENT, L.B. #6674
  - - FOUND PERMANENT REFERENCE MONUMENT, L.B. #6674
  - - SET PERMANENT CONTROL POINT, L.B. #6674
  - - FOUND PERMANENT CONTROL POINT, L.B. #6674
  - Δ - DELTA ANGLE
  - BE - BUFFER EASEMENT
  - CB - CHORD BEARING
  - CH - CHORD DISTANCE
  - C - CENTERLINE
  - DB - DEED BOOK
  - DE - DRAINAGE EASEMENT
  - L - ARC LENGTH
  - L.A.E. - LIMITED ACCESS EASEMENT
  - L.M.A.E. - LAKE MAINTENANCE ACCESS EASEMENT
  - L.M.E. - LAKE MAINTENANCE EASEMENT
  - L.W.D.D. - LAKE WORTH DRAINAGE DISTRICT
  - N.R. - NOT RADIAL
  - N.T.S. - NOT TO SCALE
  - O.R.B. - OFFICIAL RECORD BOOK
  - P.B. - PLAT BOOK
  - P.S. - PAGES
  - P.S.M. - PROFESSIONAL SURVEYOR AND MAPPER
  - R - RADIUS
  - RAD. - RADIAL
  - R/W - RIGHT-OF-WAY
  - S.T. - SURVEY TIE
  - UE - UTILITY EASEMENT
  - P.B.F.C. - PALM BEACH FARMS COMPANY PLAT NO. 1 (P.B. 2, PGS. 26 - 28)
  - 73 - DENOTES TRACT NUMBER PER PALM BEACH FARMS COMPANY PLAT NO. 1 (P.B. 2, PGS. 26 - 28)
  - N 737648.0171 E 905258.2326 - DENOTES STATE PLANE COORDINATES

**NOTE:**  
 COORDINATES SHOWN ARE GRID COORDINATES  
 DATUM = NAD 83 (1990 ADJUSTMENT)  
 ZONE = FLORIDA EAST ZONE  
 LINEAR UNIT = U.S. SURVEY FEET  
 COORDINATE SYSTEM = 1983 STATE PLANE TRANSVERSE MERCATOR PROJECTION  
 ALL DISTANCES ARE GROUND  
 SCALE FACTOR = 1.0000190  
 PLAT BEARING = GRID BEARING  
 NO ROTATION



SUBDIVISION SATURNIA ISLES - PL 3  
 BOOK 94 PAGE 70  
 FLOOD ZONE B FLOOD MAP # 215 A  
 QUAD # 52 ZONING AAR  
 SE ZIP CODE 33440  
 TAZ 761  
 PUD NAME SUSSMAN AGR