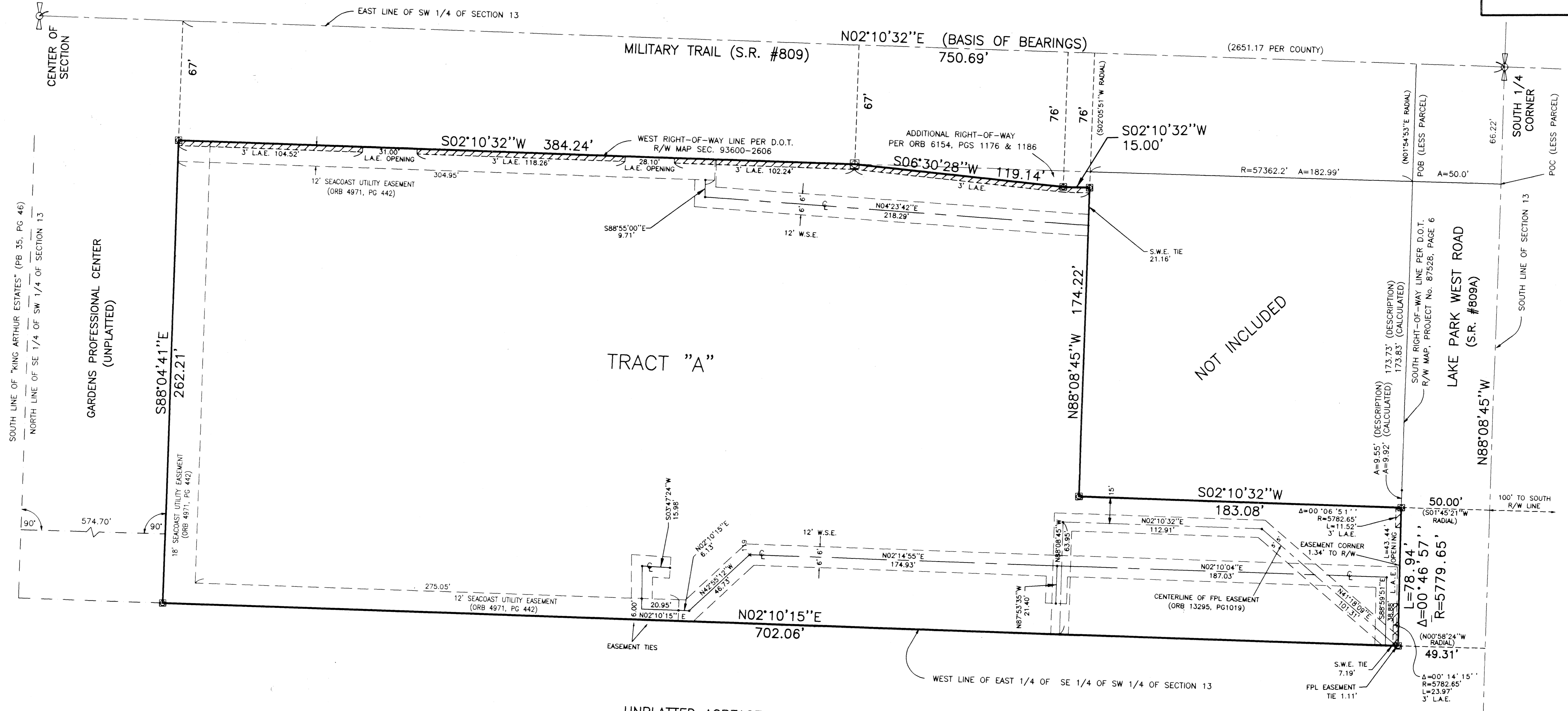
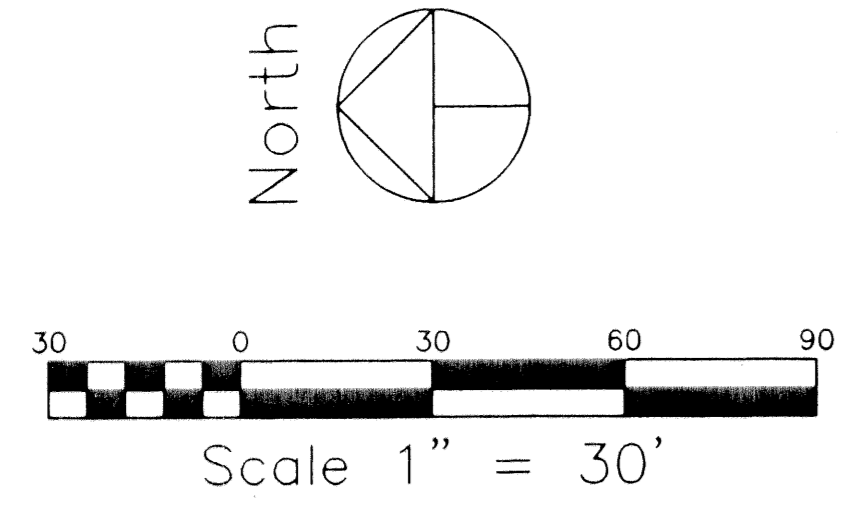


PLAT OF
Sunny Plaza
 LYING IN SECTION 13, TOWNSHIP 42 SOUTH, RANGE 42 EAST
 CITY OF PALM BEACH GARDENS, PALM BEACH COUNTY, FLORIDA
 FEBRUARY 2002



- NOTES:
1. \blacksquare DENOTES PERMANENT REFERENCE MONUMENT (P.R.M.) LS 4133 SET.
 2. BEARINGS BASED ON THE EAST LINE OF THE SW 1/4 OF SECTION 13 BEARING N 02°10'32" E.
 3. ABBREVIATIONS:
 CL = CENTERLINE
 ORB = OFFICIAL RECORDS BOOK
 PG = PAGE
 R/W = RIGHT-OF-WAY
 L.A.E. = LIMITED ACCESS EASEMENT
 POC = POINT OF COMMENCEMENT
 POB = POINT OF BEGINNING
 Δ = CENTRAL (DELTA) ANGLE
 L = ARC LENGTH
 R = RADIUS
 W.S.E. = WATER AND SEWER EASEMENT

UNPLATTED ACREAGE

PREPARED BY ROBERT P. BLASZYK, PSM, IN THE OFFICES OF
RPB Consulting, Inc.
 Land Surveying and Mapping, L.B. No. 7022
 11211 Prosperity Farms Road, Suite C-301, Palm Beach Gardens, Florida 33410
 Phone (561) 876-1110 Fax (561) 624-1569