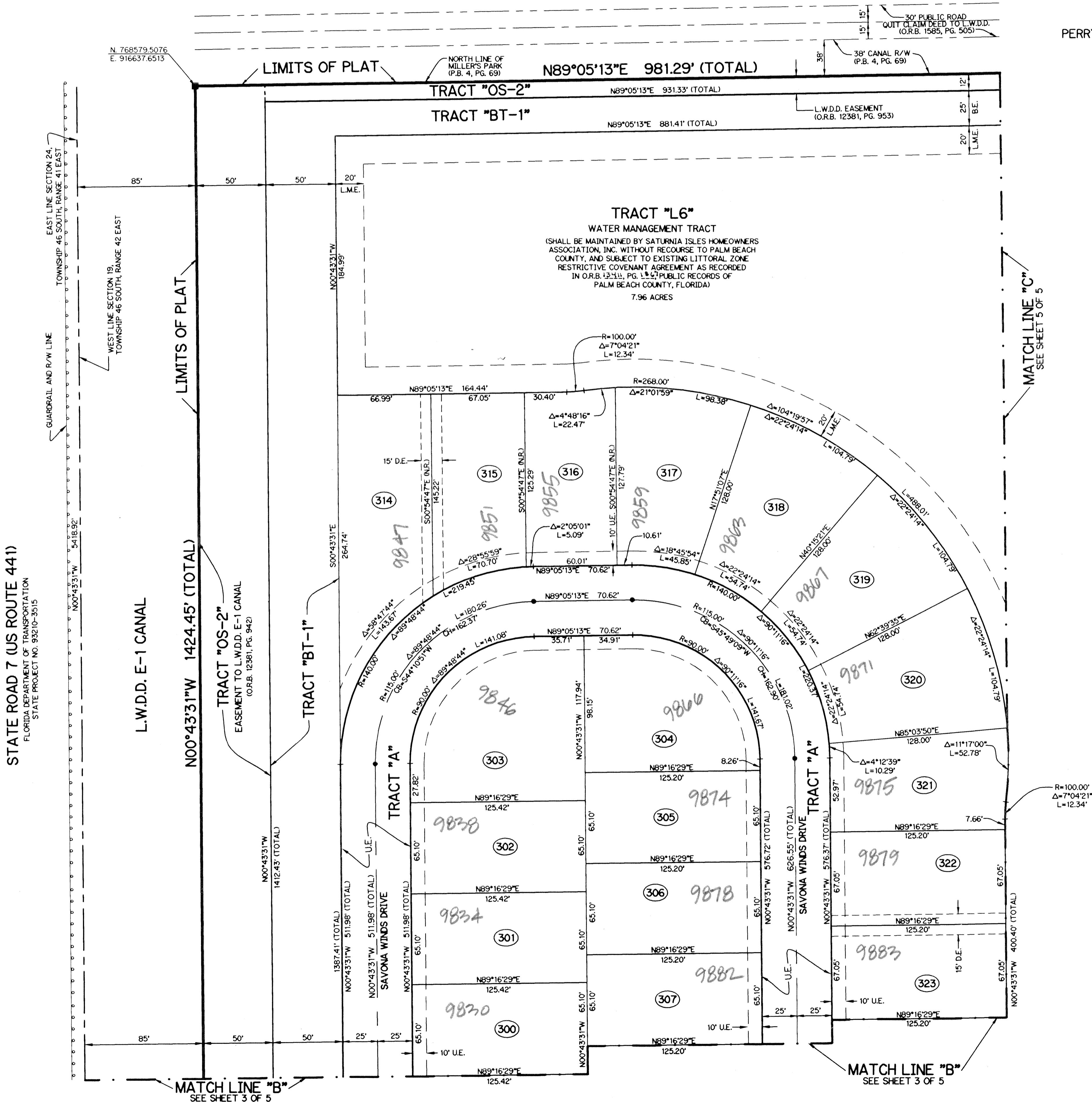
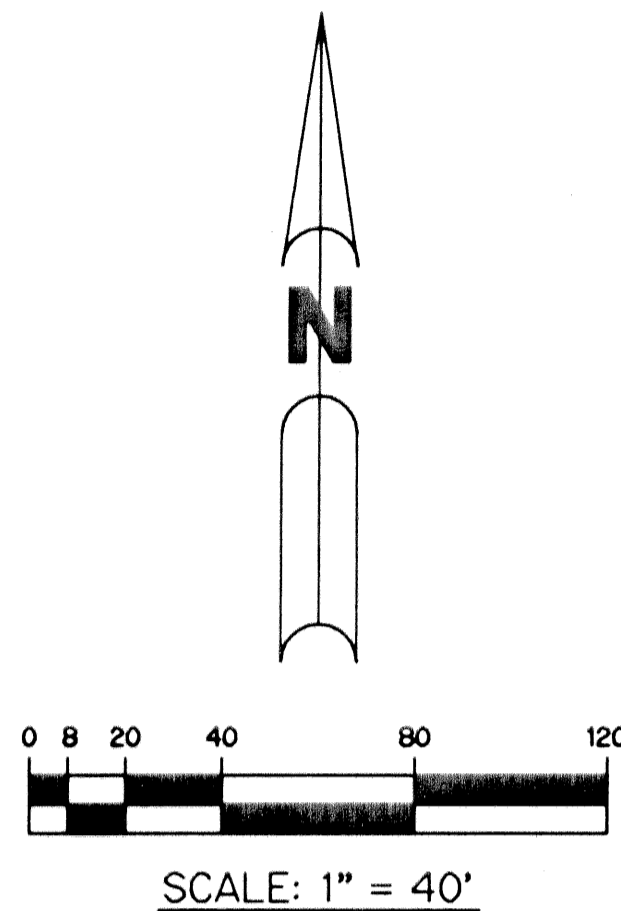


# SATURNIA ISLES - PLAT FOUR

BEING A REPLAT OF A PORTION OF TRACT 85, SECTION 19, PALM BEACH FARMS COMPANY PLAT NO. 1 ACCORDING TO THE PLAT THEREOF, RECORDED IN PLAT BOOK 2, PAGE 26 TOGETHER WITH A PORTION OF BLOCKS 1 THROUGH 12, MILLER'S PARK, ACCORDING TO THE PLAT THEREOF, RECORDED IN PLAT BOOK 4, PAGE 69 TOGETHER WITH A PORTION OF BLOCKS 1 AND 6, MILLER'S PARK UNIT 2, ACCORDING TO THE PLAT THEREOF, RECORDED IN PLAT BOOK 4, PAGE 75 TOGETHER WITH ALL ABANDONED RIGHTS OF WAY AS PER OFFICIAL RECORDS BOOK 12389, PAGE 1259, ALL OF THE PUBLIC RECORDS OF PALM BEACH COUNTY, FLORIDA, LYING IN SECTION 19, TOWNSHIP 46 SOUTH, RANGE 42 EAST.

SHEET 4 OF 5 NOVEMBER, 2001

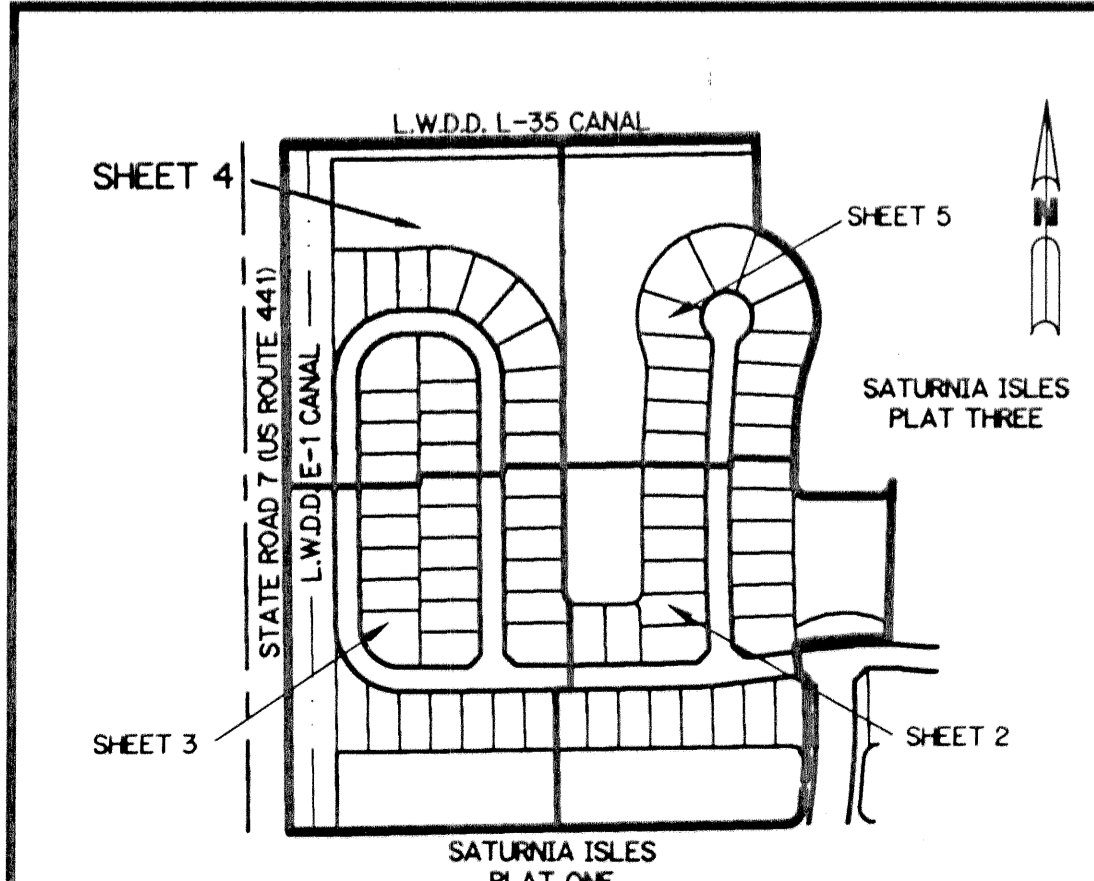
THIS INSTRUMENT PREPARED BY  
 PERRY C. WHITE, P.S.M. 4213, STATE OF FLORIDA  
 LAWSON, NOBLE AND WEBB, INC.  
 ENGINEERS PLANNERS SURVEYORS  
 420 COLUMBIA DRIVE  
 WEST PALM BEACH, FLORIDA 33409  
 LB-6674



- LEGEND:**
- - SET PERMANENT REFERENCE MONUMENT, L.B. #6674
  - - FOUND PERMANENT REFERENCE MONUMENT, L.B. #6674
  - - SET PERMANENT CONTROL POINT, L.B. #6674
  - - FOUND PERMANENT CONTROL POINT, L.B. #6674
  - Δ - DELTA ANGLE
  - BE - BUFFER EASEMENT
  - CB - CHORD BEARING
  - CH - CHORD DISTANCE
  - CL - CENTERLINE
  - DB - DEED BOOK
  - DE - DRAINAGE EASEMENT
  - L - ARC LENGTH
  - L.A.E. - LIMITED ACCESS EASEMENT
  - L.M.A.E. - LAKE MAINTENANCE ACCESS EASEMENT
  - L.M.E. - LAKE MAINTENANCE EASEMENT
  - L.W.D.D. - LAKE WORTH DRAINAGE DISTRICT
  - N.R. - NOT RADIAL
  - N.T.S. - NOT TO SCALE
  - O.R.B. - OFFICIAL RECORD BOOK
  - P.B. - PLAT BOOK
  - PGS. - PAGES
  - P.S.M. - PROFESSIONAL SURVEYOR AND MAPPER
  - R - RADIUS
  - RAD. - RADIAL
  - R/W - RIGHT-OF-WAY
  - S.T. - SURVEY TIE
  - U.E. - UTILITY EASEMENT
  - P.B.F.C. - PALM BEACH FARMS COMPANY PLAT NO. 1 (P.B. 2, PGS. 26 - 28)
  - (with number) - DENOTES TRACT NUMBER PER PALM BEACH FARMS COMPANY PLAT NO. 1
  - N 737648.0171 E 905258.2326 - DENOTES STATE PLANE COORDINATES

**NOTE:**  
 COORDINATES SHOWN ARE GRID COORDINATES  
 DATUM = NAD 83 (1990 ADJUSTMENT)  
 ZONE = FLORIDA EAST ZONE  
 LINEAR UNIT = U.S. SURVEY FEET  
 COORDINATE SYSTEM = 1983 STATE PLANE TRANSVERSE MERCATOR PROJECTION  
 ALL DISTANCES ARE GROUND  
 SCALE FACTOR = 1.0000190  
 PLAT BEARING = GRID BEARING  
 NO ROTATION

**KEY MAP**  
 N.T.S.



SUBDIVISION SATURNIA ISLES - PLAT 4  
 BOOK 94 PAGES 114  
 FLOOD ZONE B FLOOD MAP # 215 A  
 QUAD # 52 ZONING AGR  
 SE ZIP CODE 33440  
 TAZ 7(1) SUSSMAN AGR  
 FUD NAME SUSSMAN AGR