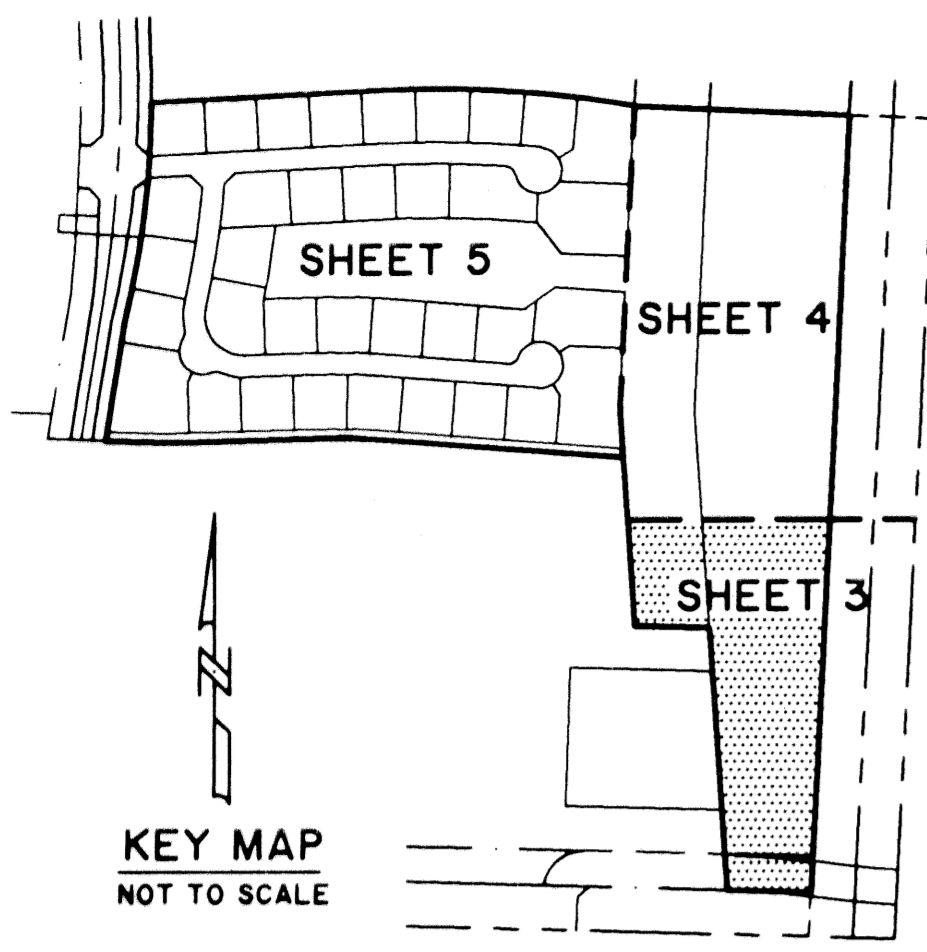


ISLES AT WELLINGTON PLAT VI

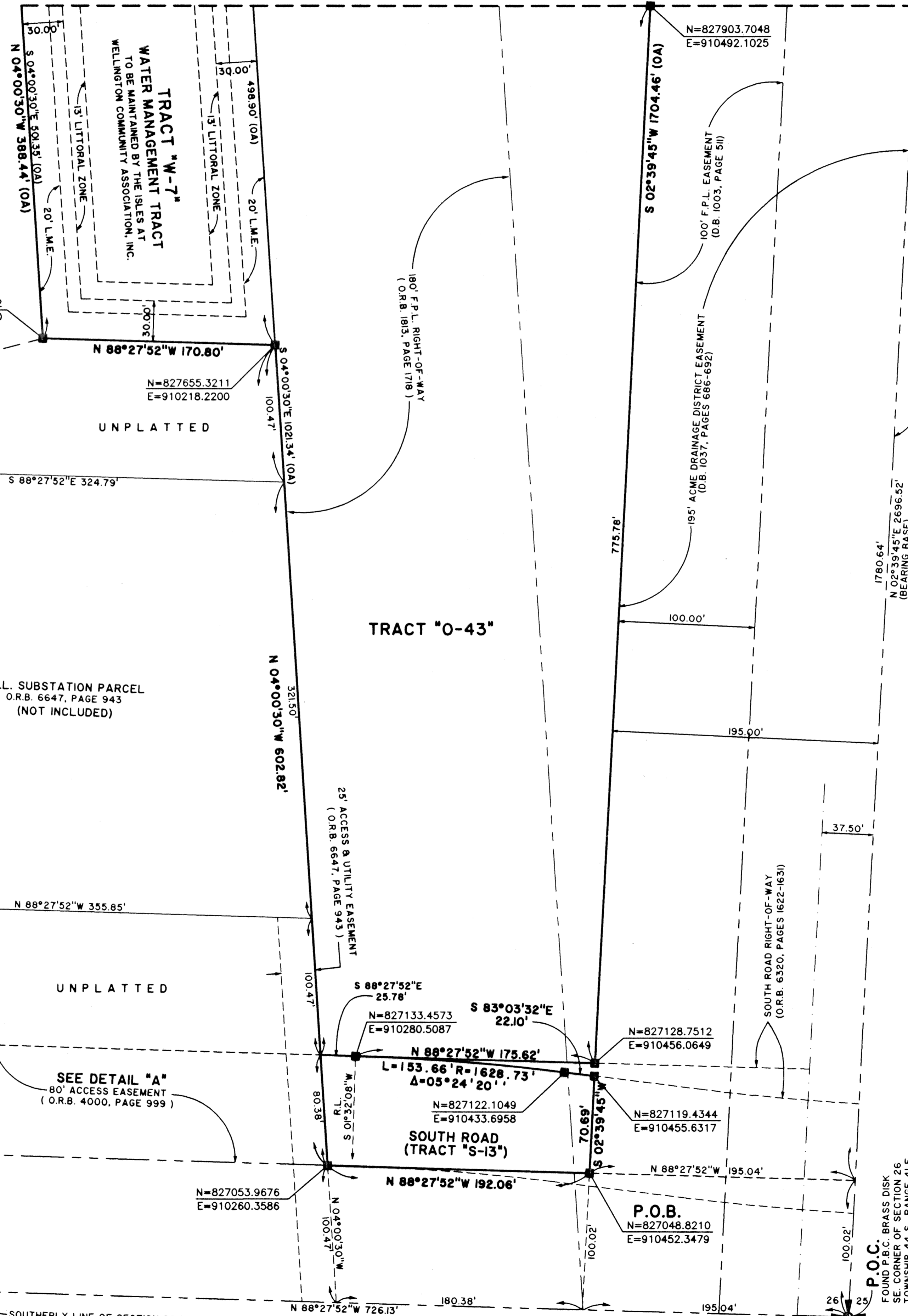
A PORTION OF THE ORANGE POINT PLANNED UNIT DEVELOPMENT
LYING IN SECTION 26, TOWNSHIP 44 SOUTH, RANGE 41 EAST,
VILLAGE OF WELLINGTON, PALM BEACH COUNTY, FLORIDA.
SHEET 3 OF 5 JANUARY, 2002

STATE OF FLORIDA SS
COUNTY OF PALM BEACH
THIS PLAT WAS FILED FOR RECORD AT _____
M., THIS _____ DAY OF _____ 2002
AND DULY RECORDED IN PLAT BOOK NO. _____
ON PAGE _____
DOROTHY H. WILKEN,
CLERK OF THE CIRCUIT COURT
BY _____ D.C.



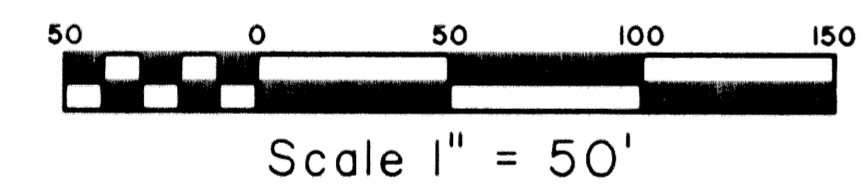
MATCH TO SHEET 4

UNPLATTED

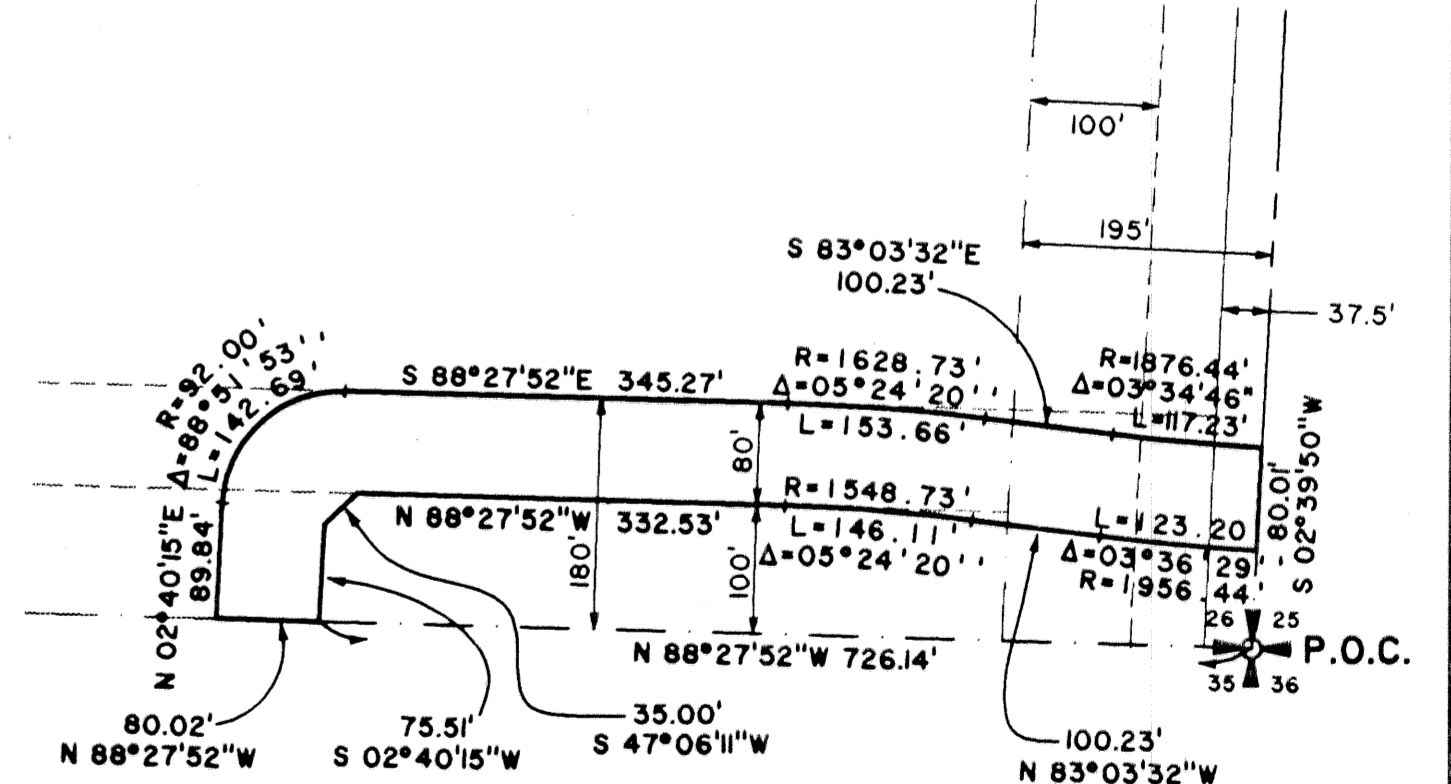


"PANGOLA"
FOUND P.B.C. BRASS
DISK AND C.M.
N= 827159.2580
E= 905154.9570

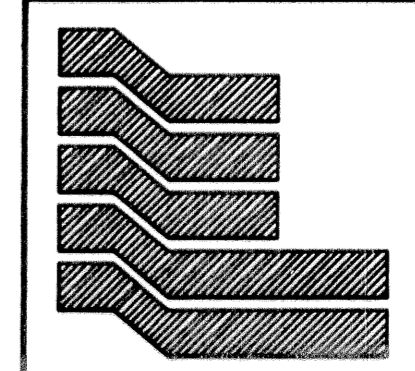
"BTG-38"
FOUND P.B.C. BRASS
DISK AND C.M.
N= 827093.5670
E= 907863.6250



COORDINATE NOTE:
STATE PLANE COORDINATES SHOWN ARE GRID DATUM, NAD 83 1990
ADJUSTMENT, FLORIDA EAST ZONE, COORDINATE SYSTEM 1983 STATE
PLANE, TRANSVERSE MERCATOR PROJECTION
LINEAR UNIT = US SURVEY FEET
ALL DISTANCES ARE GROUND
SCALE FACTOR = 1.0000139
GROUND DISTANCE X SCALE FACTOR = GRID DISTANCE
BEARINGS AS SHOWN HEREON ARE GRID DATUM, NAD 83 1990
ADJUSTMENT, FLORIDA EAST ZONE.



DETAIL "A"
NOT TO SCALE
80' ACCESS EASEMENT
(O.R.B. 4000, PAGE 999)



Landmark Surveying & Mapping Inc.
1850 Forest Hill Boulevard
Ph. (561) 433-5405 Suite 100 W.P.B. Florida
LB # 4396

ISLES AT WELLINGTON PLAT VI
(POD "F")

HOMELAND
(PLAT BOOK 33, PAGES III - II7)

SOUTHERLY LINE OF SECTION 26/44/41

P.O.C.
FOUND P.B.C. BRASS DISK
SE CORNER OF SECTION 26
TOWNSHIP 44 S., RANGE 41 E.