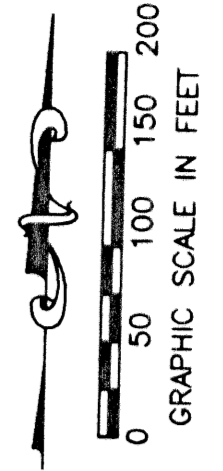


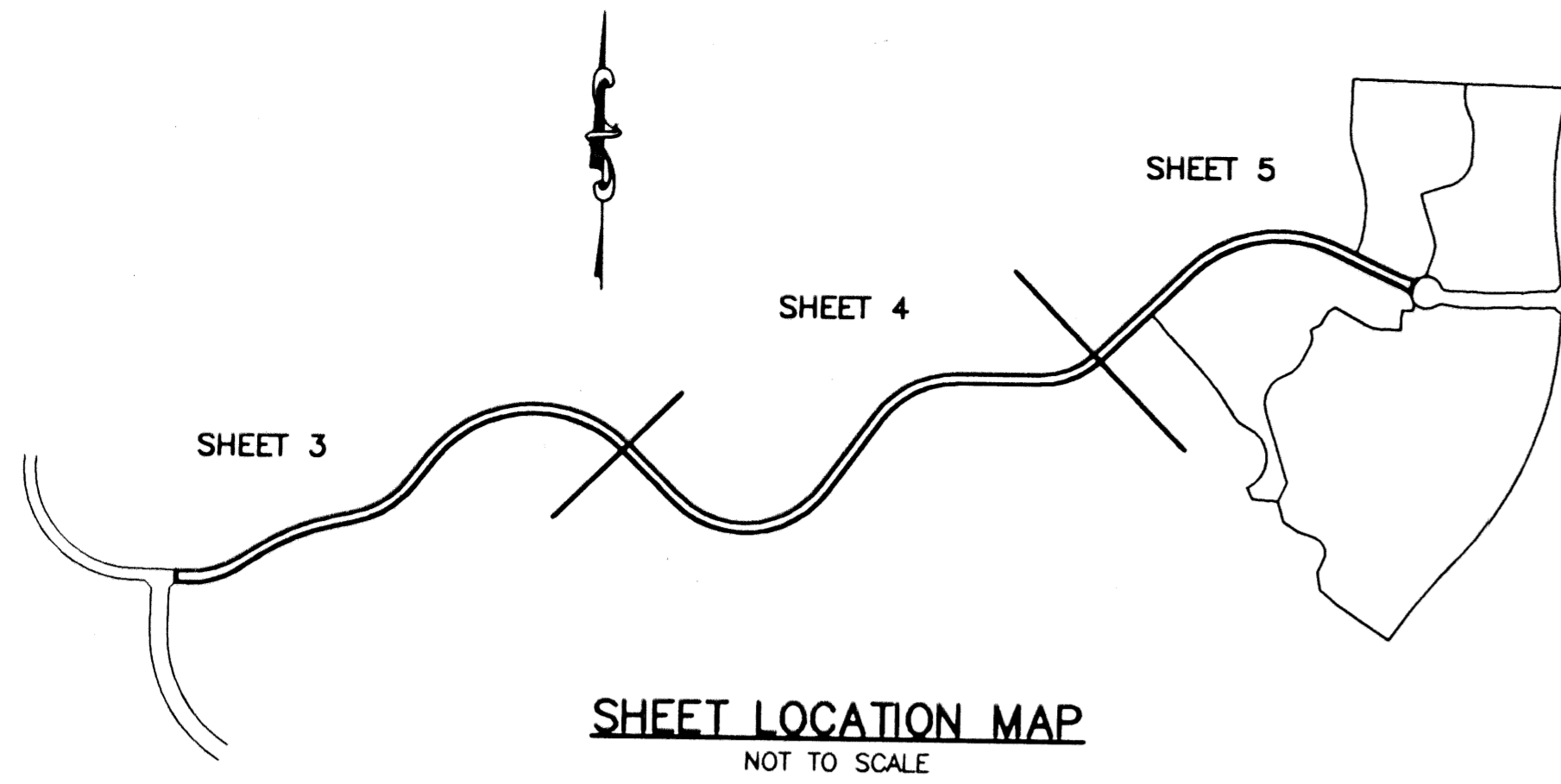
STATE OF FLORIDA
COUNTY OF PALM BEACH
THIS PLAT WAS FILED FOR
RECORD _____
THIS _____ DAY OF _____
AD, 2002 AND DULY RECORDED
IN PLAT BOOK _____ ON PAGES
_____ AND _____
DOROTHY H. WILKEN, CLERK
BY: _____, D.C.



CIRCUIT COURT SEAL

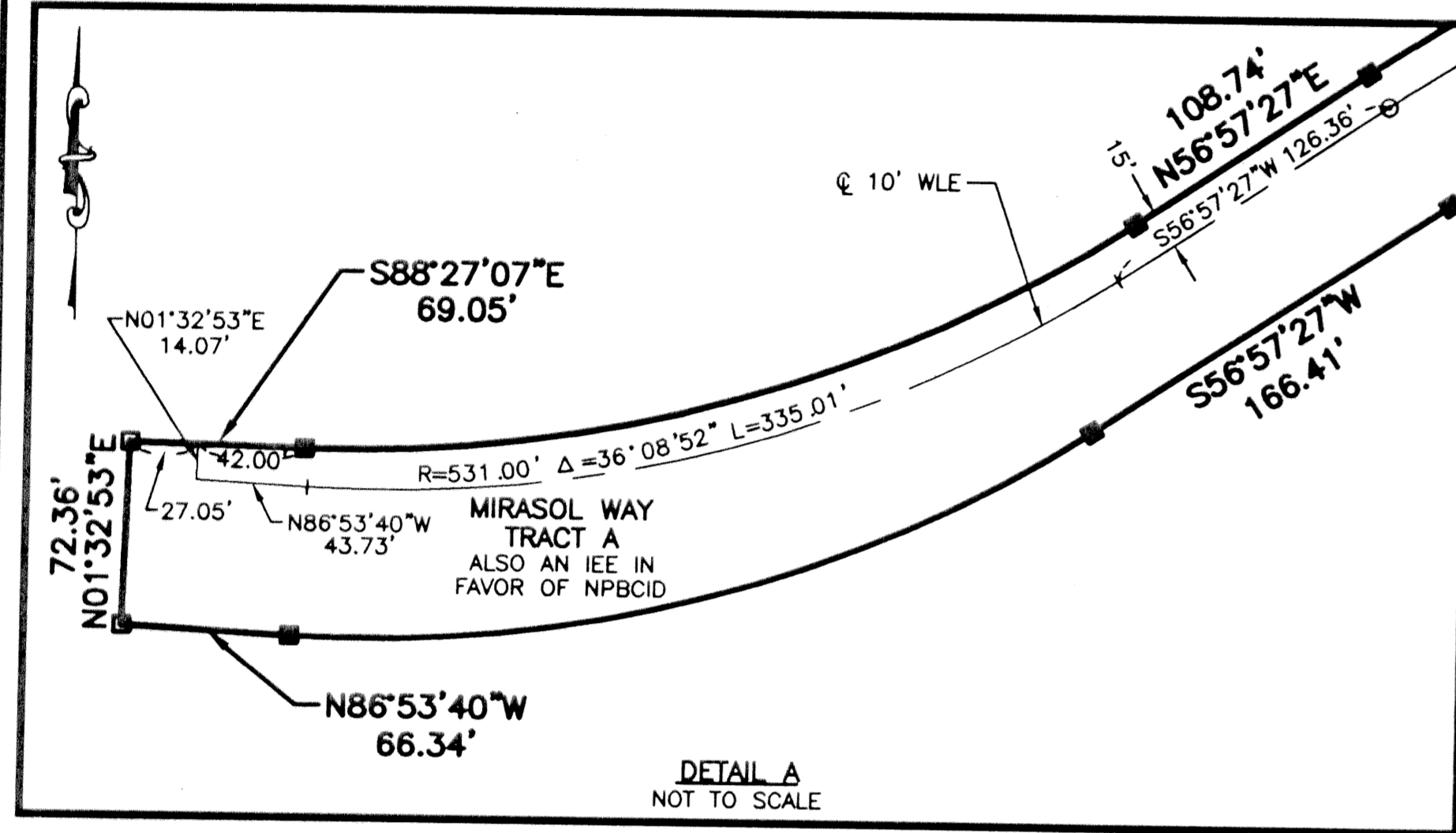
MIRASOL PLAT FOUR

PART OF GOLF DIGEST P.C.D.
SECTIONS 3 AND 4, TOWNSHIP 42 SOUTH, RANGE 42 EAST,
CITY OF PALM BEACH GARDENS,
PALM BEACH COUNTY, FLORIDA
SHEET 3 OF 5



GOLF DIGEST, PCD
NOT PLATTED

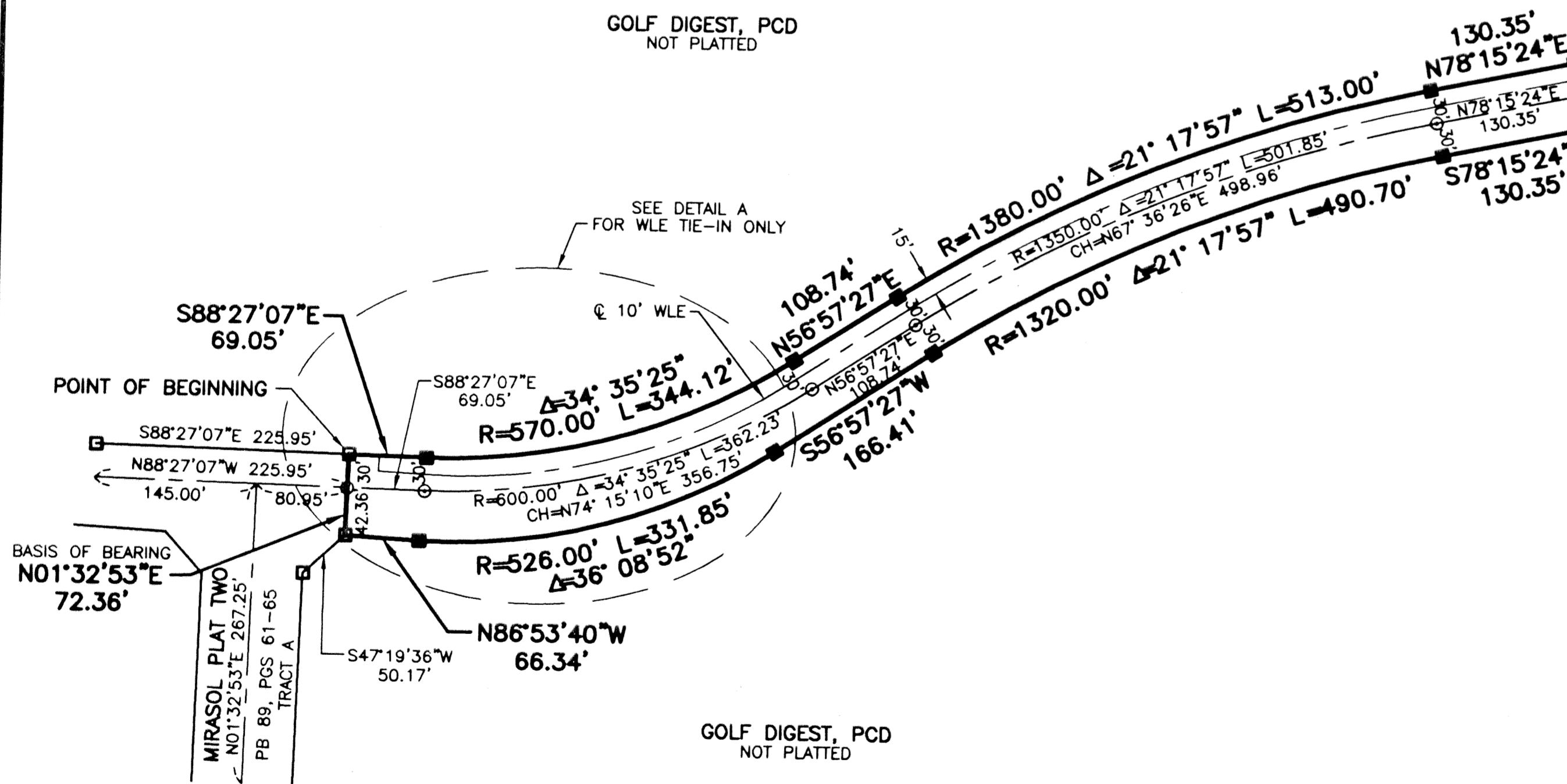
GOLF DIGEST, PCD
NOT PLATTED



GOLF DIGEST, PCD
NOT PLATTED

MIRASOL WAY
TRACT A
ALSO AN IEE IN
FAVOR OF NPBCID

GOLF DIGEST, PCD
NOT PLATTED



LEGEND

- Δ CENTRAL (DELTA) ANGLE
- CH CHORD
- ESMT EASEMENT
- IEE INGRESS/EGRESS EASEMENT
- L ARC LENGTH
- NPBCID NORTHERN PALM BEACH COUNTY IMPROVEMENT DISTRICT
- PCD PLANNED COMMUNITY DEVELOPMENT OFFICIAL RECORD BOOK
- ORB PLAT BOOK
- PB PAGE(S)
- PG(S) PAGE(S)
- R RADIUS
- SLE SEWER LINE EASEMENT
- SUA SEACOAST UTILITY AUTHORITY
- WLE WATER LINE EASEMENT
- PERMANENT REFERENCE MONUMENT SET LB-048 (4"x4" CONCRETE)
- PERMANENT REFERENCE MONUMENT FOUND LB-048 (4"x4" CONCRETE)
- PERMANENT CONTROL POINT SET LB-048

THIS INSTRUMENT WAS PREPARED BY MARY HANNA CLODFELTER, P.S.M. IN THE OFFICES OF MOCK, ROOS & ASSOCIATES, INC., 5720 CORPORATE WAY, WEST PALM BEACH, FLORIDA 33407.

SCALE:
1" = 100'
P.A. NO.:
99327.00
DATE:
JULY, 2001
DRAWING NO.:
42-42-03-68

FLORIDA L.B. NO. 48

MOCK • ROOS
ENGINEERS • SURVEYORS • PLANNERS

5720 Corporate Way, West Palm Beach, Florida 33407
(561) 683-3113, fax 478-7248

MIRASOL PLAT FOUR
PART OF GOLF DIGEST P.C.D.,
SITUATE IN SECTIONS 3 AND 4,
TOWNSHIP 42 SOUTH, RANGE 42 EAST,
CITY OF PALM BEACH GARDENS,
PALM BEACH COUNTY, FLORIDA

S:\lpv\lpv\spn2\spn2r.p02.dwg 12/12/01 08:42:13 AM EST

REV.: 11-26-01
CAD FILE:
TAYLSPN2\SPN2R.P02