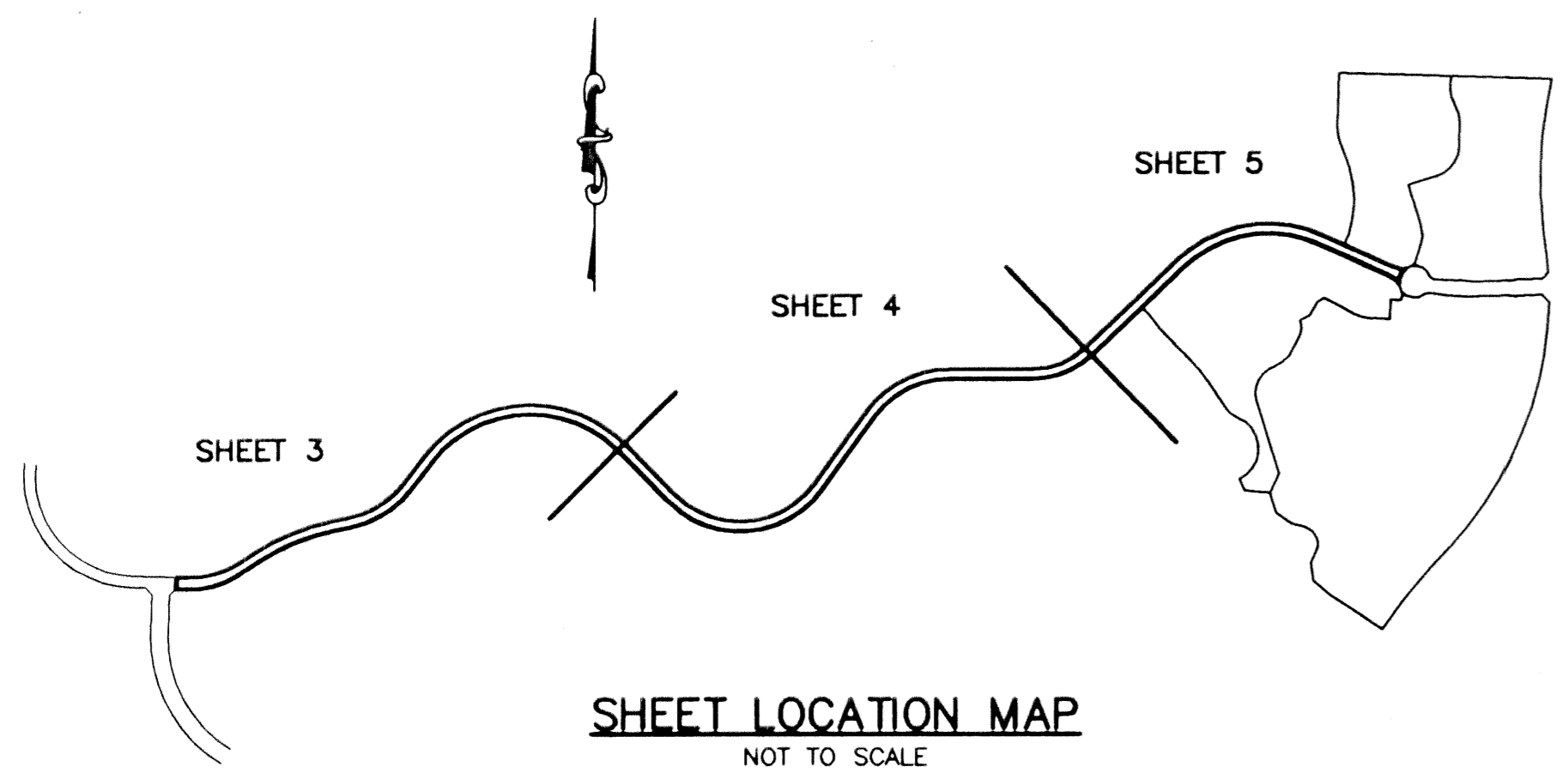
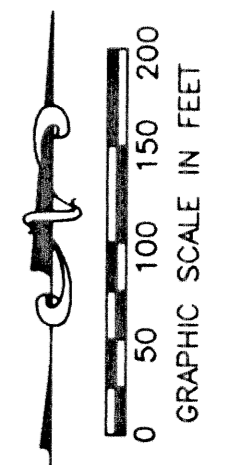


# MIRASOL PLAT FOUR

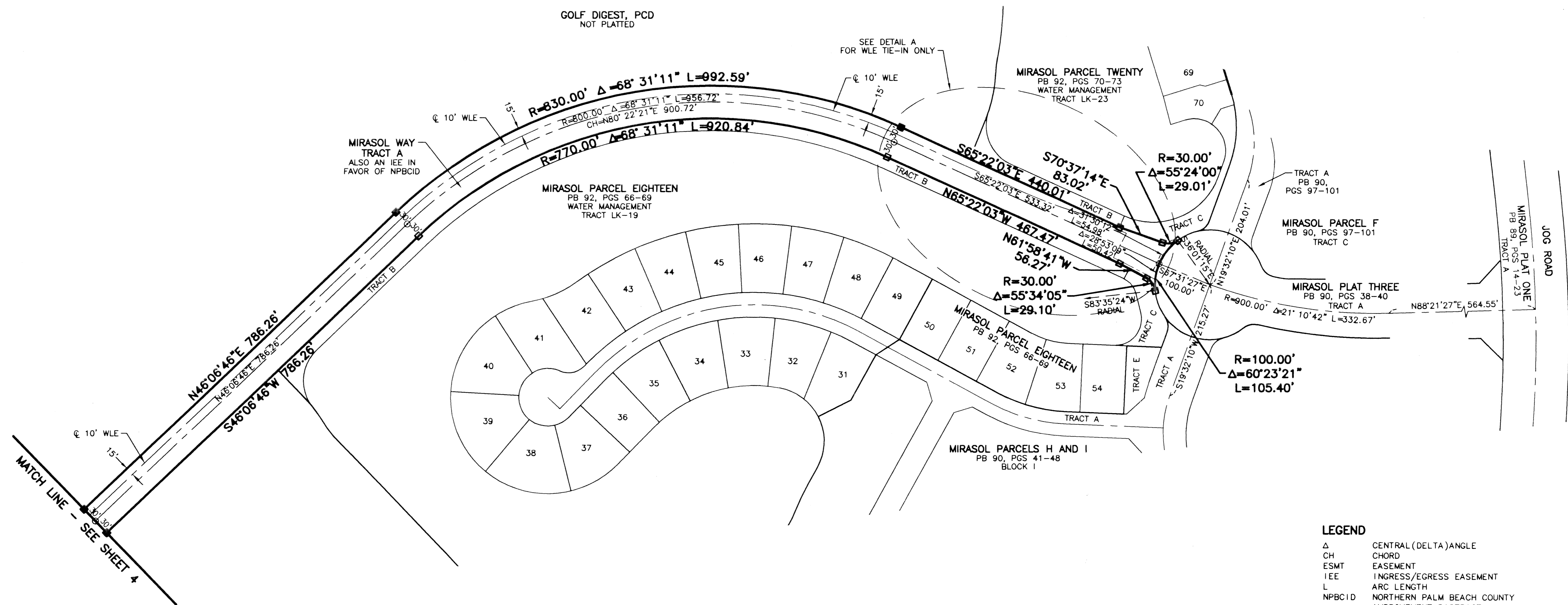
PART OF GOLF DIGEST P.C.D.  
SECTIONS 3 AND 4, TOWNSHIP 42 SOUTH, RANGE 42 EAST,  
CITY OF PALM BEACH GARDENS,  
PALM BEACH COUNTY, FLORIDA  
SHEET 5 OF 5

STATE OF FLORIDA  
COUNTY OF PALM BEACH  
THIS PLAT WAS FILED FOR  
RECORD \_\_\_\_\_  
THIS \_\_\_\_\_ DAY OF \_\_\_\_\_  
AD, 2002 AND DULY RECORDED  
IN PLAT BOOK \_\_\_\_\_ ON PAGES  
\_\_\_\_\_ AND \_\_\_\_\_  
DOROTHY H. WILKEN, CLERK  
BY: \_\_\_\_\_, D.C.



SHEET LOCATION MAP  
NOT TO SCALE

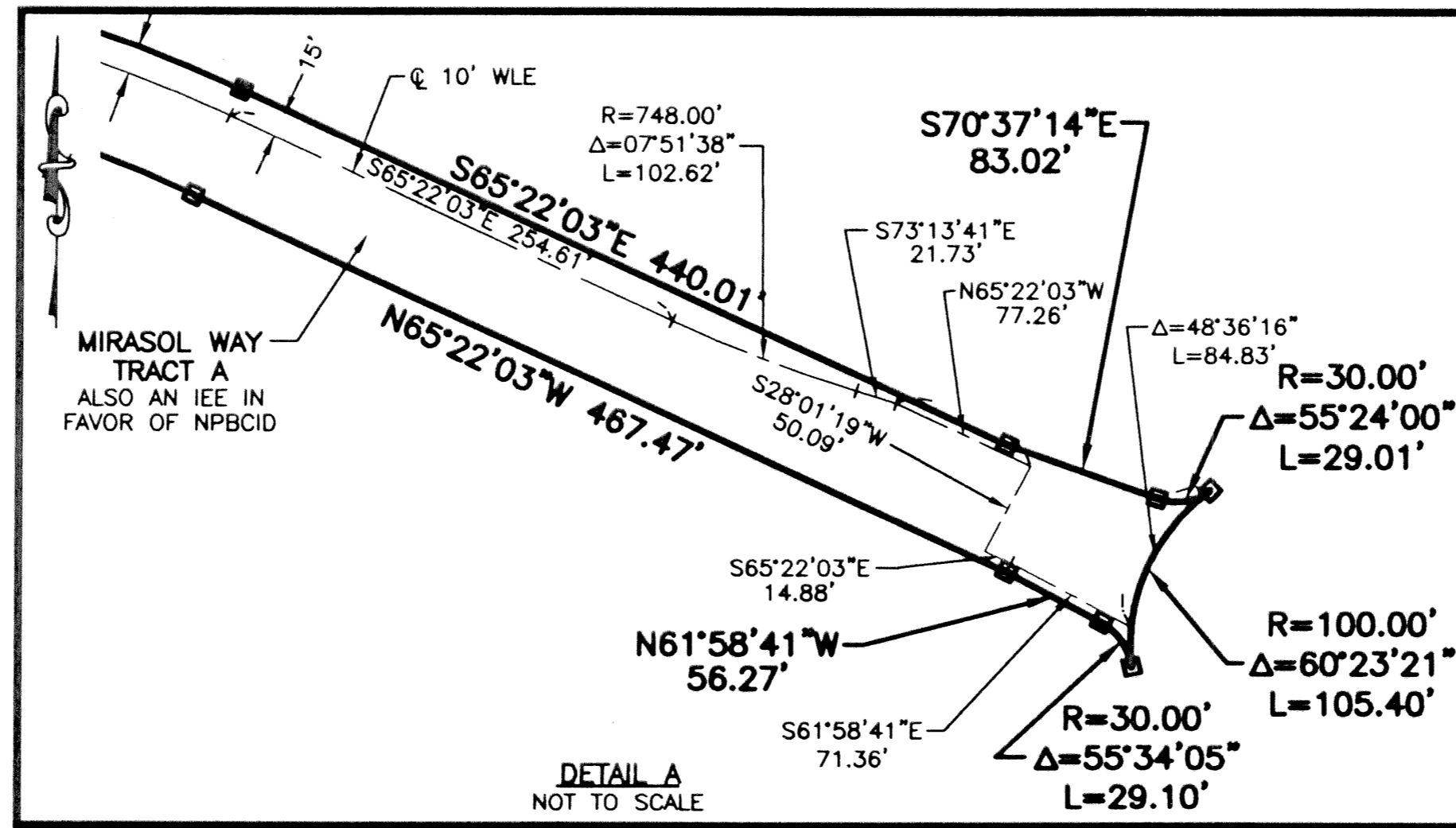
GOLF DIGEST, PCD  
NOT PLATTED



MATCH LINE - SEE SHEET 4

**LEGEND**

Δ	CENTRAL (DELTA) ANGLE
CH	CHORD
ESMT	EASEMENT
IEE	INGRESS/EGRESS EASEMENT
L	ARC LENGTH
NPBCID	NORTHERN PALM BEACH COUNTY IMPROVEMENT DISTRICT
PCD	PLANNED COMMUNITY DEVELOPMENT
ORB	OFFICIAL RECORD BOOK
PB	PLAT BOOK
PG(S)	PAGE(S)
R	RADIUS
SLE	SEWER LINE EASEMENT
SUA	SEACOAST UTILITY AUTHORITY
WLE	WATER LINE EASEMENT
■	PERMANENT REFERENCE MONUMENT SET LB-048 (4"x4" CONCRETE)
□	PERMANENT REFERENCE MONUMENT FOUND LB-048 (4"x4" CONCRETE)
○	PERMANENT CONTROL POINT SET LB-048



DETAIL A  
NOT TO SCALE

THIS INSTRUMENT WAS PREPARED BY MARY HANNA CLODFELTER, P.S.M. IN THE OFFICES OF MOCK, ROOS & ASSOCIATES, INC., 5720 CORPORATE WAY, WEST PALM BEACH, FLORIDA 33407.

SCALE: 1" = 100'  
P.A. NO.: 99327.00  
DATE: JULY, 2001  
DRAWING NO. 42-42-03-68

FLORIDA L.B. NO. 48

**MOCK • ROOS**  
ENGINEERS • SURVEYORS • PLANNERS

5720 Corporate Way, West Palm Beach, Florida 33407  
(561) 683-3113, fax 478-7248

SHEET 5 OF 5

**MIRASOL PLAT FOUR**  
PART OF GOLF DIGEST P.C.D.  
SITUATE IN SECTIONS 3 AND 4,  
TOWNSHIP 42 SOUTH, RANGE 42 EAST,  
CITY OF PALM BEACH GARDENS,  
PALM BEACH COUNTY, FLORIDA

S:\p\l\rev\spn2.dwg 12/12/01 08:42:13 AM EST  
REV.: 11-26-01  
CAD FILE: TAYLSPN2\SPN2RP02