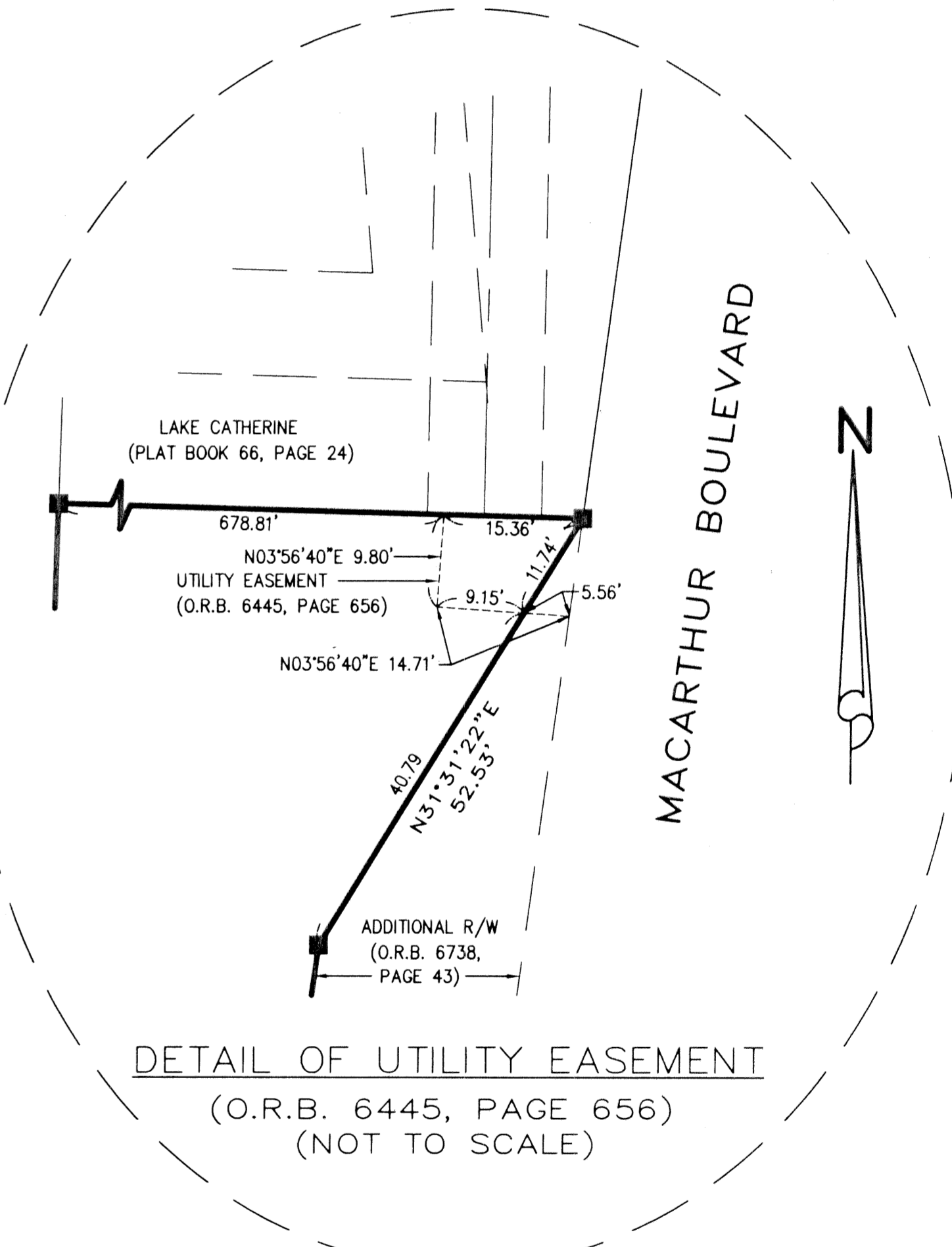
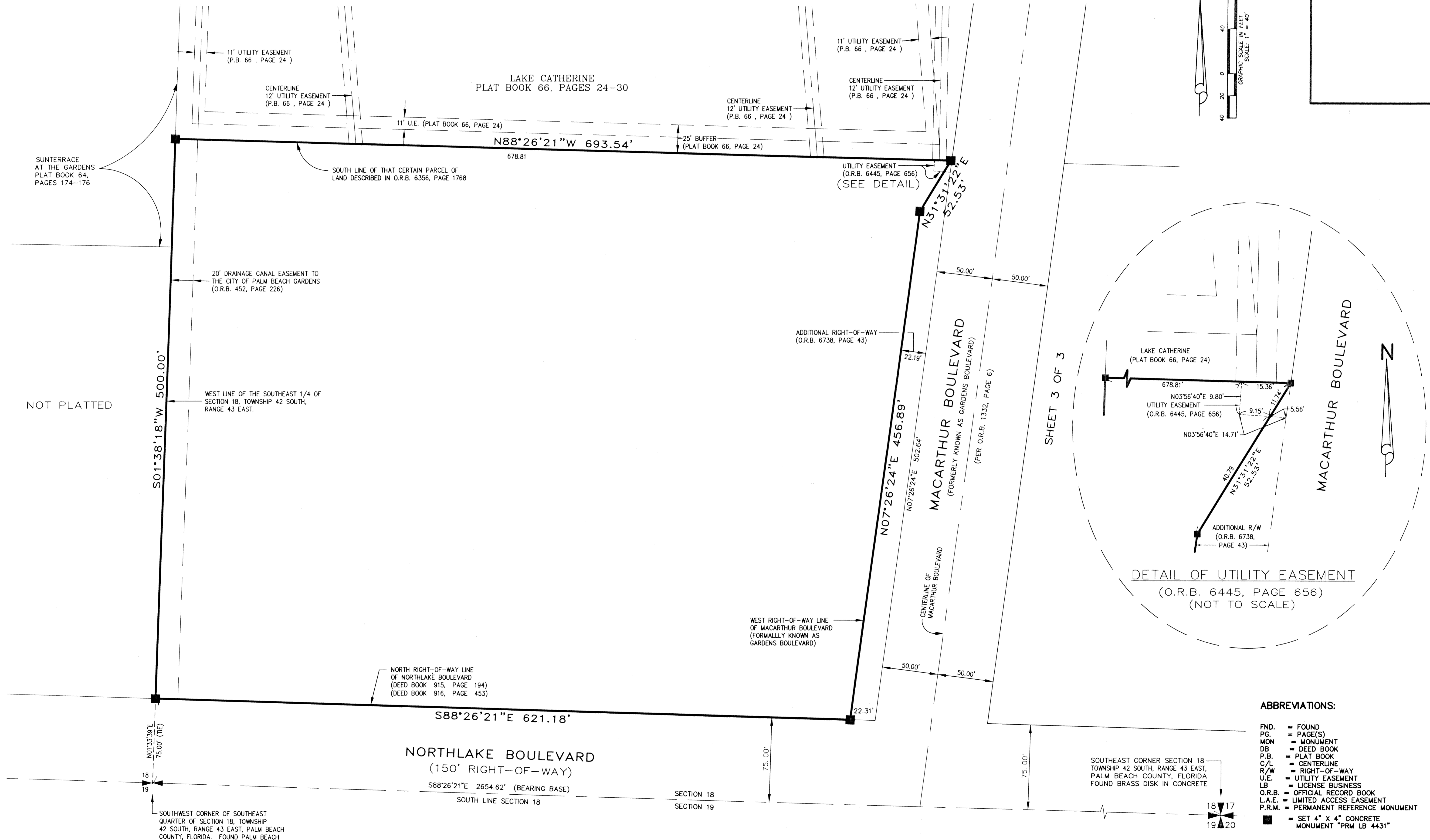
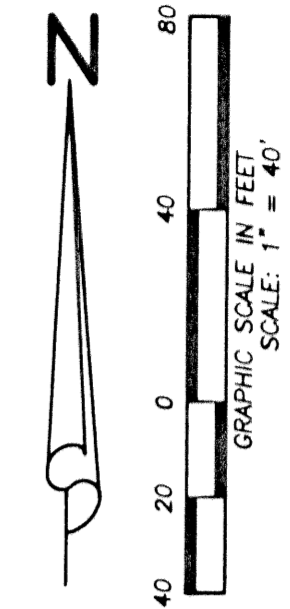


MACARTHUR PARCELS 12.04 & 12.05, A P.U.D.

156

LYING IN SECTION 18, TOWNSHIP 42 SOUTH, RANGE 43 EAST,
CITY OF PALM BEACH GARDENS, PALM BEACH COUNTY, FLORIDA
JANUARY, 2002
SHEET 2 OF 3



- ABBREVIATIONS:**
- FND. = FOUND
 - PG. = PAGE(S)
 - MON = MONUMENT
 - DB = DEED BOOK
 - P.B. = PLAT BOOK
 - C/L = CENTERLINE
 - R/W = RIGHT-OF-WAY
 - U.E. = UTILITY EASEMENT
 - LB = LICENSE BUSINESS
 - O.R.B. = OFFICIAL RECORD BOOK
 - L.A.E. = LIMITED ACCESS EASEMENT
 - P.R.M. = PERMANENT REFERENCE MONUMENT
 - = SET 4" X 4" CONCRETE MONUMENT "PRM LB 4431"

LIDBERG LAND SURVEYING, INC.
 675 West Indiantown Road, Suite 200,
 Jupiter, Florida 33458 TEL. 561-746-8454

CAD K:\AUTOCAD\01-174\0741306.DWG	
REF K:\AUTOCAD\98-063\	
FLD	FB. PG.
OFF D.LIDBERG	JOB 01-174-302A
CKD D.C.L.	DATE 09-21-01
SHEET 2 OF 3	DWG D01-174P