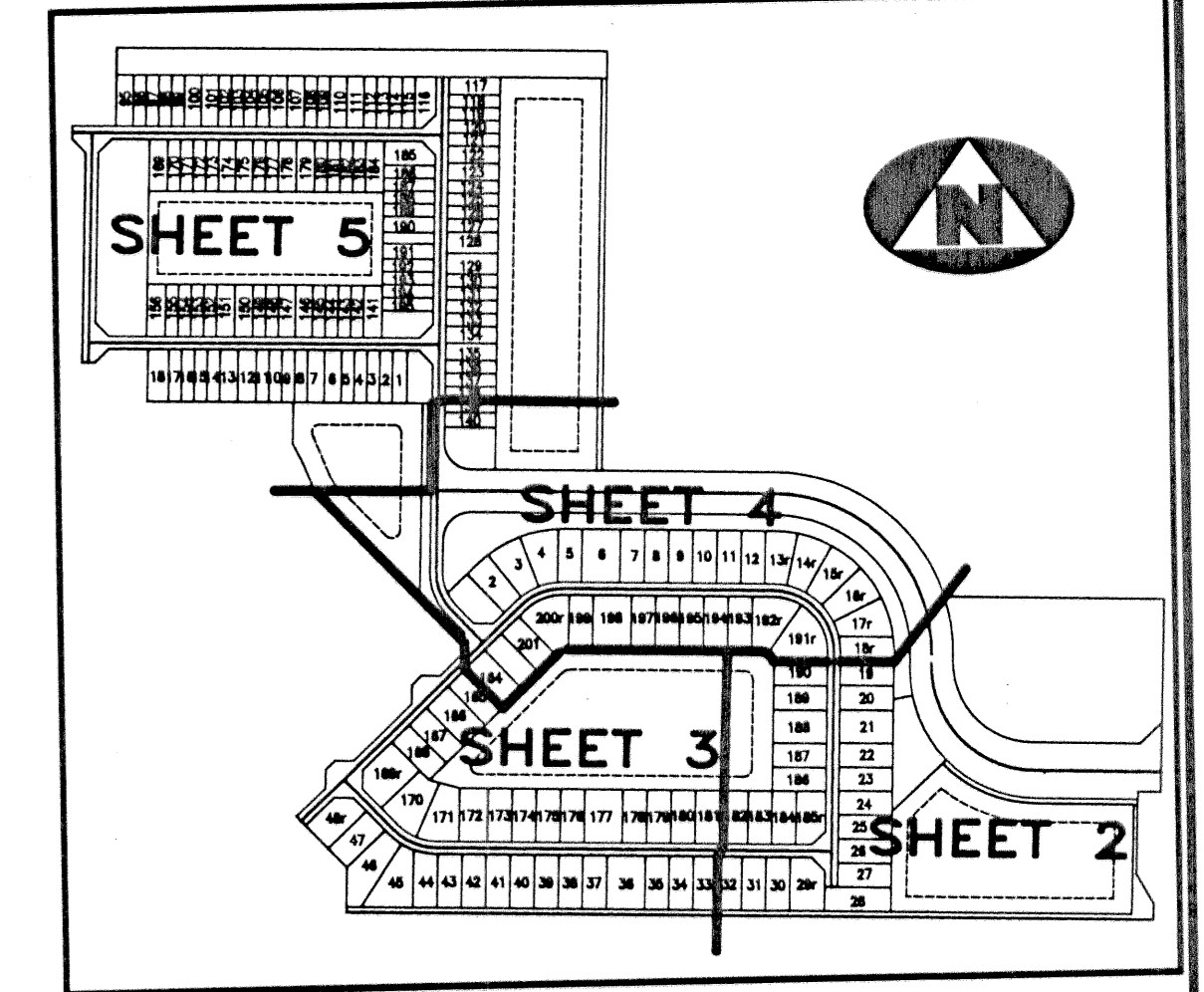


# NORTH COUNTY P.U.D. PLAT 1

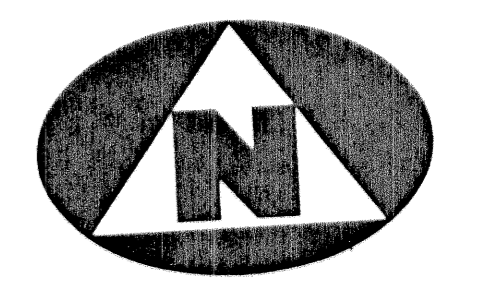
JANUARY 2002  
LYING IN THE NORTHWEST ONE-QUARTER OF SECTION 36, TOWNSHIP 42 SOUTH, RANGE 42 EAST, CITY OF RIVIERA BEACH, PALM BEACH COUNTY, FLORIDA

CURVE TABLE					
C1	R=257'	CA=90°00'00"	L=403.69'	LCB=N43°19'12"W	CHD=363.45'
C2	R=297'	CA=90°00'00"	L=466.53'	LCB=N43°19'12"W	CHD=420.02'
C3	R=337'	CA=90°00'00"	L=529.36'	LCB=N43°19'12"W	CHD=476.59'
C4	R=200'	CA=89°47'18"	L=313.42'	LCB=N43°12'51"W	CHD=282.32'
C5	R=25'	CA=89°59'55"	L=39.27'	LCB=S43°19'14"E	CHD=35.35'

UNPLATTED



SHEET INDEX  
(NOT TO SCALE)



GRAPHIC SCALE  
(IN FEET)

LEGEND:

- F.D.O.T. DENOTES FLORIDA DEPARTMENT OF TRANSPORTATION
- L.M.E. DENOTES A LAKE MAINTENANCE EASEMENT
- (R) DENOTES A RADIAL LINE
- C/L DENOTES A CENTERLINE
- U.E. DENOTES UTILITY EASEMENT
- D.E. DENOTES DRAINAGE EASEMENT
- D.B. DENOTES DEED BOOK
- L.A.E. DENOTES LIMITED ACCESS EASEMENT
- R DENOTES RADIUS DISTANCE
- L DENOTES ARC LENGTH DISTANCE
- CA DENOTES CENTRAL ANGLE
- CB DENOTES LONG CHORD BEARING
- CD DENOTES CHORD DISTANCE
- POB DENOTES POINT OF BEGINNING
- POC DENOTES POINT OF COMMENCEMENT
- ORB DENOTES OFFICIAL RECORDS BOOK
- P.B. DENOTES PLAT BOOK NUMBER
- PG. DENOTES PAGE NUMBER
- NPBCID DENOTES NORTHERN PALM BEACH COUNTY IMPROVEMENT DISTRICT
- ☐ DENOTES A SET PERMANENT REFERENCE MONUMENT (NO. 2424)
- ⊙ DENOTES A SET PERMANENT CONTROL POINT (NO. 2424)

SURVEYOR'S NOTES:

- THE BASE BEARING, AS SHOWN HEREON, IS SOUTH 01°53'30" WEST ALONG THE EAST LINE OF THE NORTHWEST ONE-QUARTER OF SECTION 36.
- IN THOSE INSTANCES WHERE UTILITY/DRAINAGE STRUCTURES ARE CONSTRUCTED IN CONFLICT WITH THE PLATTED PERMANENT CONTROL POINTS (P.C.P.) POSITION, STRADDLERS MONUMENTED AS PERMANENT CONTROL POINTS WILL BE SET TO REFERENCE THE PLATTED P.C.P. POSITION.
- LINE WHICH INTERSECT CURVES ARE NOT RADIAL UNLESS OTHERWISE NOTED.
- THIS INSTRUMENT WAS PREPARED BY W.M. R. VAN CAMPEN, P.S.M. IN AND FOR THE OFFICES OF BENCH MARK LAND SURVEYING AND MAPPING INC., 4152 WEST BLUE HERON BOULEVARD, SUITE 121, RIVIERA BEACH, FLORIDA.

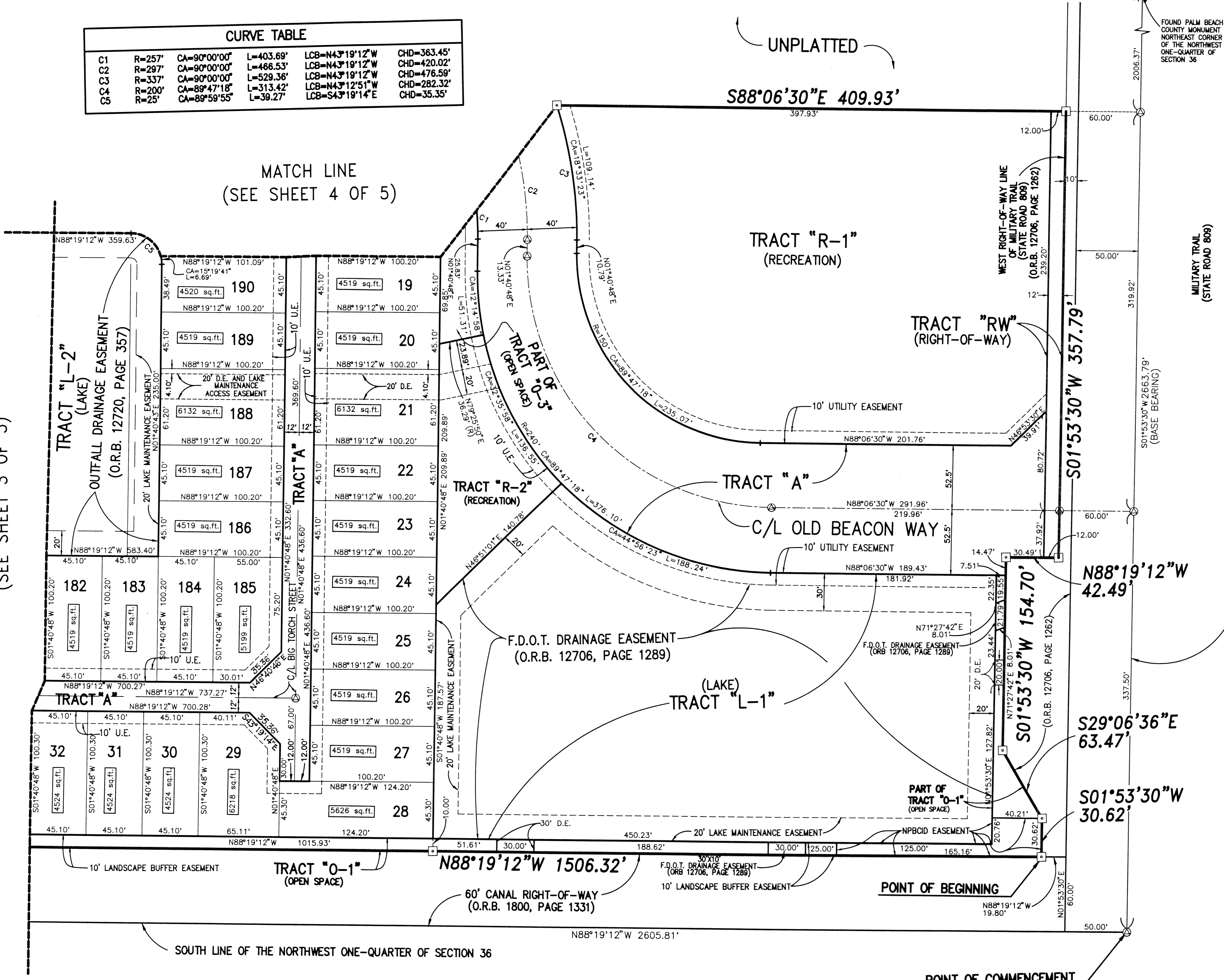
**BENCH MARK LAND SURVEYING & MAPPING, INC.**  
 4152 W. BLUE HERON BOULEVARD • SUITE 121  
 RIVIERA BEACH • FLORIDA 33404  
 PHONE: (561) 848-2102 • L.B. 2171 • FAX: (561) 844-9659  
 EMAIL: bmlsm@aol.com WEB: http://members.aol.com/bmlsm

RECORD PLAT OF  
NORTH COUNTY P.U.D. PLAT 1

DWN HERMIE	FB	DATE 6-4-2001	WO.# P250
CKD	FILE P250SH72.dwg	SCALE 1"=40'	SHEET 2 OF 5

MATCH LINE  
(SEE SHEET 4 OF 5)

MATCH LINE  
(SEE SHEET 3 OF 5)



LONE PINE ESTATES  
(PLAT BOOK 39, PAGE 113)

POINT OF COMMENCEMENT  
S.E. CORNER OF THE  
N.W. ONE-QUARTER  
OF SECTION 36

SOUTH LINE OF THE NORTHWEST ONE-QUARTER OF SECTION 36

EAST LINE OF THE NORTHWEST ONE-QUARTER OF SECTION 36 AND THE CENTERLINE OF MILITARY TRAIL (STATE ROAD 809)

MILITARY TRAIL (STATE ROAD 809)

WEST RIGHT-OF-WAY LINE OF MILITARY TRAIL (STATE ROAD 809) (O.R.B. 12706, PAGE 1262)

S88°06'30"E 409.93'

TRACT "R-1"  
(RECREATION)

TRACT "RW"  
(RIGHT-OF-WAY)

TRACT "A"

C/L OLD BEACON WAY

TRACT "L-1"  
(LAKE)

F.D.O.T. DRAINAGE EASEMENT  
(O.R.B. 12706, PAGE 1289)

TRACT "L-2"  
(LAKE)  
OUTFALL DRAINAGE EASEMENT  
(O.R.B. 12720, PAGE 357)

TRACT "A"

TRACT "R-2"  
(RECREATION)

TRACT "A"

TRACT "O-1"  
(OPEN SPACE)

PART OF TRACT "O-1"  
(OPEN SPACE)

60' CANAL RIGHT-OF-WAY  
(O.R.B. 1800, PAGE 1331)

20' LAKE MAINTENANCE EASEMENT  
(O.R.B. 12720, PAGE 357)

20' D.E. AND LAKE MAINTENANCE ACCESS EASEMENT

C/L BIG TORCH STREET

10' LANDSCAPE BUFFER EASEMENT

F.D.O.T. DRAINAGE EASEMENT  
(ORB 12706, PAGE 1289)

NPBCID EASEMENT

10' LANDSCAPE BUFFER EASEMENT

20' LAKE MAINTENANCE EASEMENT  
(O.R.B. 12720, PAGE 357)

20' D.E. AND LAKE MAINTENANCE ACCESS EASEMENT

C/L BIG TORCH STREET

10' LANDSCAPE BUFFER EASEMENT

F.D.O.T. DRAINAGE EASEMENT  
(ORB 12706, PAGE 1289)

NPBCID EASEMENT

10' LANDSCAPE BUFFER EASEMENT