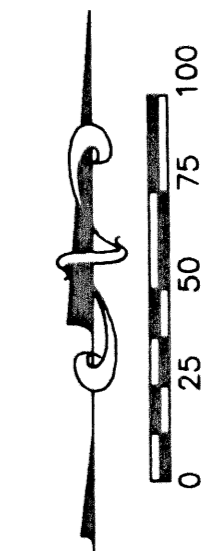


# WILLIS GLIDERPORT PLAT NO. 3

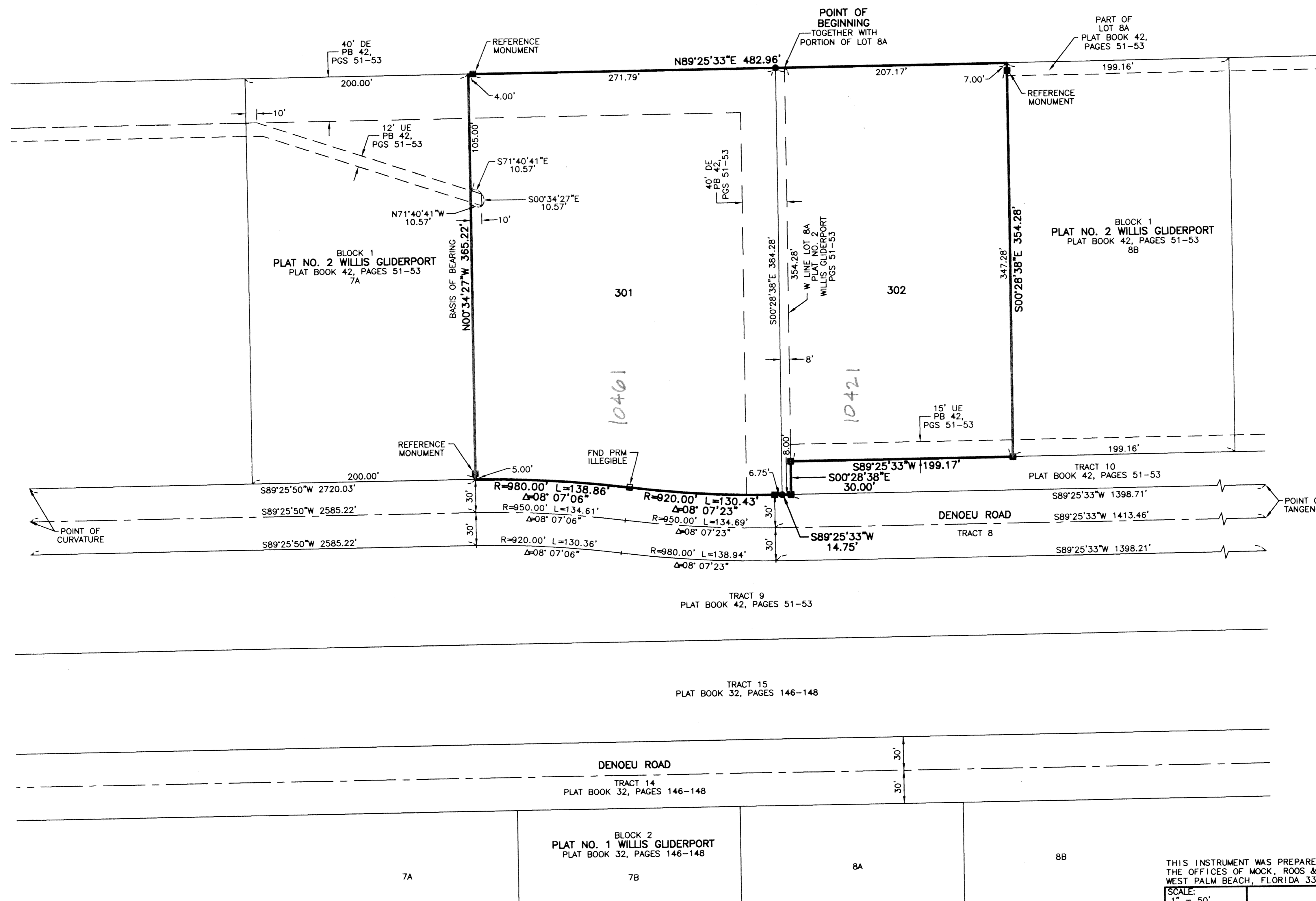
BEING A REPLAT OF LOT 7B AND  
 A PORTION OF LOT 8A, BLOCK 1  
 PLAT NO. 2 WILLIS GLIDERPORT  
 A PLANNED UNIT DEVELOPMENT  
 PLAT BOOK 42, PAGES 51 THROUGH 53  
 SITUATE IN SECTION 13, TOWNSHIP 45 SOUTH, RANGE 41 EAST,  
 PALM BEACH COUNTY, FLORIDA  
 SHEET 2 OF 2



STATE OF FLORIDA  
 COUNTY OF PALM BEACH  
 THIS PLAT WAS FILED FOR  
 RECORD \_\_\_\_\_ DAY OF \_\_\_\_\_  
 AD, 2002 AND DULY RECORDED  
 IN PLAT BOOK \_\_\_\_\_ ON PAGES  
 \_\_\_\_\_ AND \_\_\_\_\_  
 DOROTHY H. WILKEN, CLERK  
 BY: \_\_\_\_\_, D.C.

CIRCUIT COURT SEAL

NOT PLATTED



- LEGEND**
- Δ CENTRAL (DELTA) ANGLE
  - DE DRAINAGE EASEMENT
  - FND FOUND
  - L ARC LENGTH
  - PB PLAT BOOK
  - PG(S) PAGE(S)
  - PRM PERMANENT REFERENCE MONUMENT
  - R RADIUS
  - UE UTILITY EASEMENT
  - PERMANENT REFERENCE MONUMENT
  - SET LB 048 (4"x4" CONCRETE)
  - #5 IRON ROD AND CAP
  - SET LB 048

SUBMITTAL WILLIS GLIDERPORT PL 3  
 BOOK 94 PAGE 181  
 FLOOD ZONE FLOOD MAP # 1001B  
 QUAD # 04 ZONING RE  
 SE ZIP CODE 33437  
 TAZ 742  
 FUD NAME

S:\dev\devwill\dwg\willrp01.dwg 01/10/02 12:36:22 PM EST

REV.: 01-10-02  
 CAD FILE:  
 DAVIWILL\WILLRP01

THIS INSTRUMENT WAS PREPARED BY MARY HANNA CLODFELTER, P.S.M. IN THE OFFICES OF MOCK, ROOS & ASSOCIATES, INC., 5720 CORPORATE WAY, WEST PALM BEACH, FLORIDA 33407.

SCALE: 1" = 50'  
 P.A. NO.: A1055.00  
 DATE: OCTOBER, 2001  
 DRAWING NO.: 45-41-13-20

FLORIDA L.B. NO. 48

**MOCK • ROOS**  
 ENGINEERS • SURVEYORS • PLANNERS  
 5720 Corporate Way, West Palm Beach, Florida 33407  
 (561) 683-3113, fax 478-7248

**WILLIS GLIDERPORT PLAT NO. 3**  
 REPLAT OF LOT 7B AND  
 A PORTION OF LOT 8A, BLOCK 1  
 PLAT NO. 2 WILLIS GLIDERPORT  
 A PLANNED UNIT DEVELOPMENT  
 PLAT BOOK 42, PAGES 51 THROUGH 53  
 SITUATE IN SECTION 13,  
 TOWNSHIP 45 SOUTH, RANGE 41 EAST,  
 PALM BEACH COUNTY, FLORIDA

SHEET 2 OF 2