

OAKS AT BOCA RATON PLAT ONE

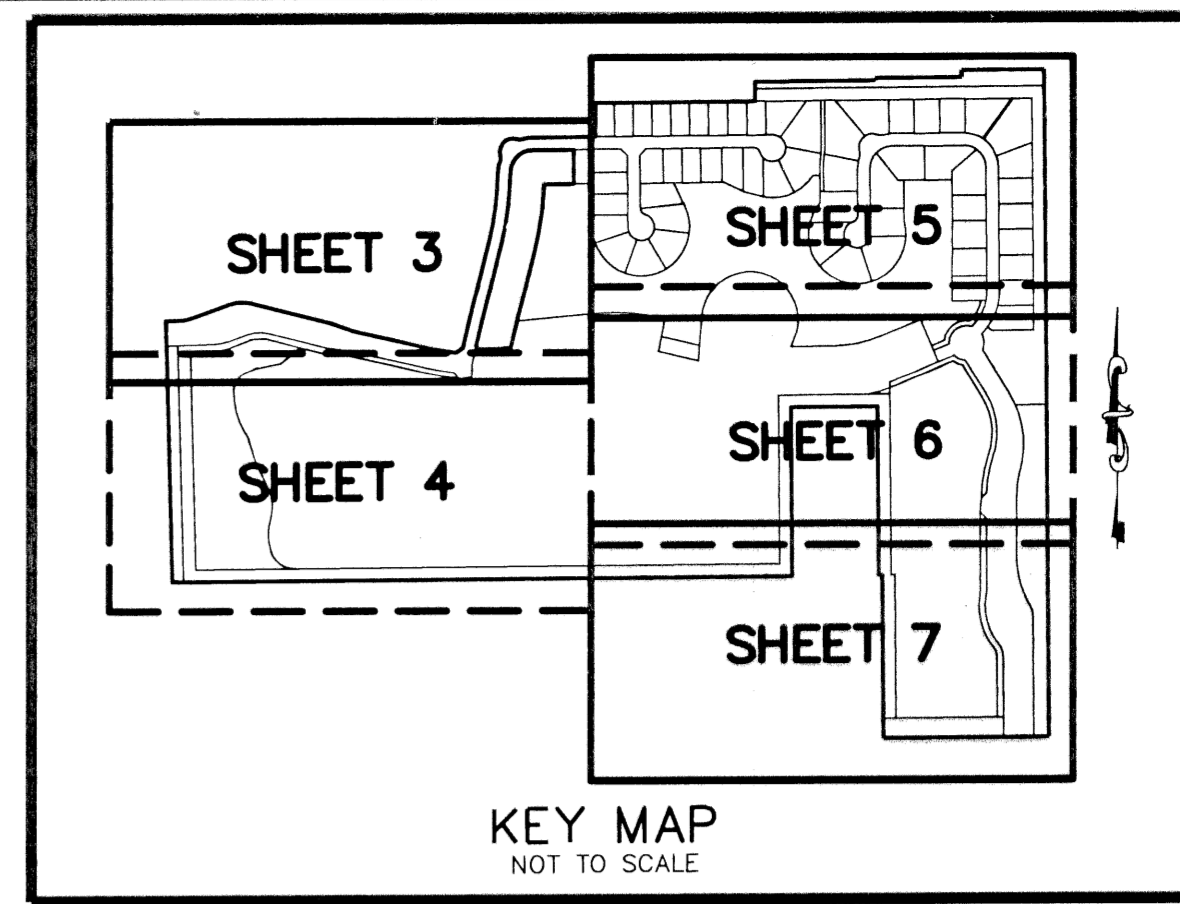
A PLANNED UNIT DEVELOPMENT
 BEING A REPLAT A PORTION OF "FOX HILL ESTATES OF BOCA RATON",
 AS RECORDED IN PLAT BOOK 87, PAGES 4 THROUGH 12, AND
 A PORTION OF BLOCK 70, "PALM BEACH FARMS COMPANY PLAT NO. 3",
 AS RECORDED IN PLAT BOOK 2, PAGES 45 THROUGH 54,
 BOTH OF THE PUBLIC RECORDS OF PALM BEACH COUNTY, FLORIDA,
 LYING IN SECTION 31, TOWNSHIP 46 SOUTH, RANGE 42 EAST, PALM BEACH COUNTY, FLORIDA

NOTES COORDINATES, BEARINGS AND DISTANCES

COORDINATES SHOWN ARE GRID
 DATUM = NAD 83 1990 ADJUSTMENT
 ZONE = FLORIDA EAST
 LINEAR UNIT = US SURVEY FEET
 COORDINATE SYSTEM 1983 STATE PLANE
 TRANSVERSE MERCATOR PROJECTION
 ALL DISTANCES ARE GROUND
 SCALE FACTOR = 1.00002099
 GROUND DISTANCE X SCALE FACTOR = GRID DISTANCE
 BEARINGS AS SHOWN HEREON ARE GRID DATUM, NAD 83 1990
 ADJUSTMENT, FLORIDA EAST ZONE.

THIS INSTRUMENT PREPARED BY
 DAVID P. LINDLEY
 OF
CAULFIELD and WHEELER, INC.
 SURVEYORS - ENGINEERS - PLANNERS
 7301-A WEST PALMETTO PARK ROAD, SUITE 100A
 BOCA RATON, FLORIDA 33433 - (561)392-1991
 OCTOBER - 2001

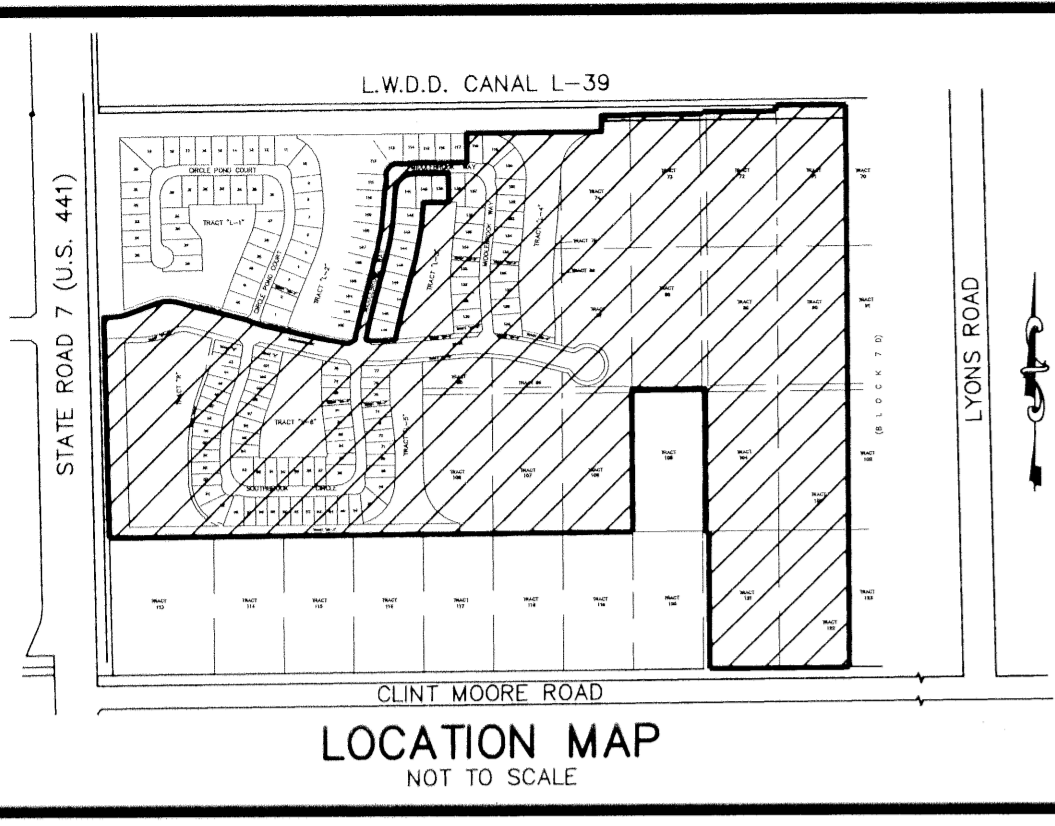
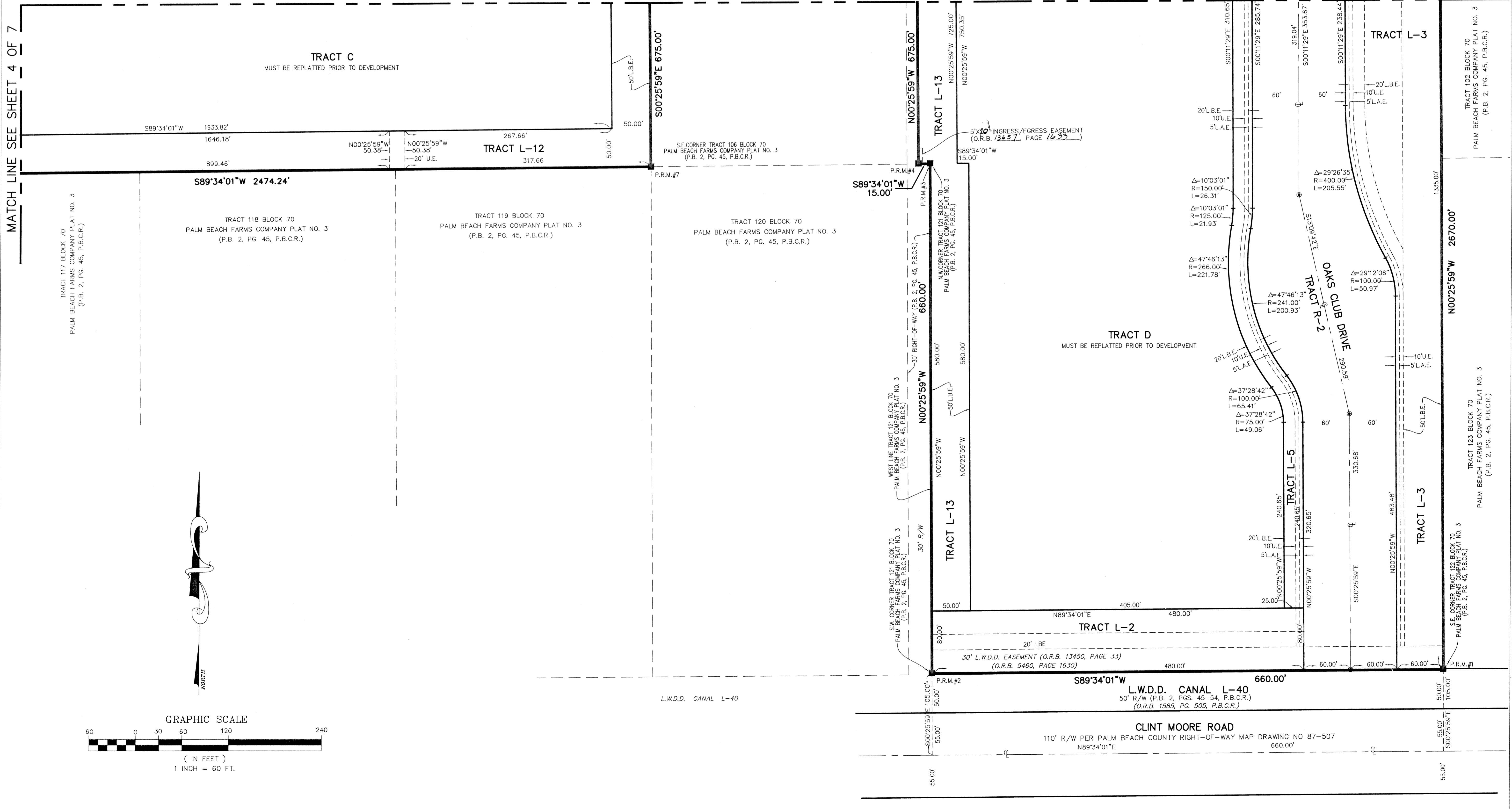
MATCH LINE SEE SHEET 6 OF 7



STATE OF FLORIDA
 COUNTY OF PALM BEACH
 THIS PLAT WAS FILED FOR
 RECORD AT _____ M.
 THIS _____ DAY OF _____
 A.D. 2002 AND DULY RECORDED
 IN PLAT BOOK _____ ON
 PAGES _____ AND _____
 DOROTHY H. MILKEN
 CLERK CIRCUIT COURT

BY: _____
 DEPUTY CLERK

SHEET 7 OF 7



LOCATION MAP
 NOT TO SCALE

MATCH LINE SEE SHEET 4 OF 7

