

CARNAHAN · PROCTOR · CROSS, INC.

CONSULTING ENGINEERS · SURVEYORS · PLANNERS

6101 WEST ATLANTIC BOULEVARD, MARGATE, FLORIDA 33063
PHONE: 954-972-3959 FAX: 954-972-4178

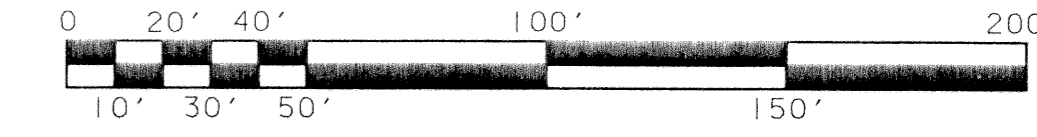
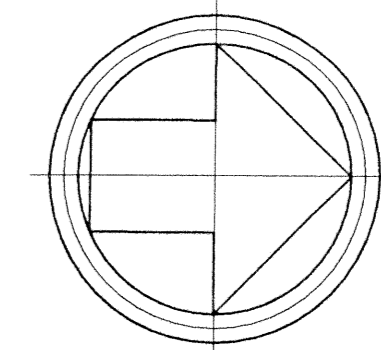
MAY 2002

990901B

JSH

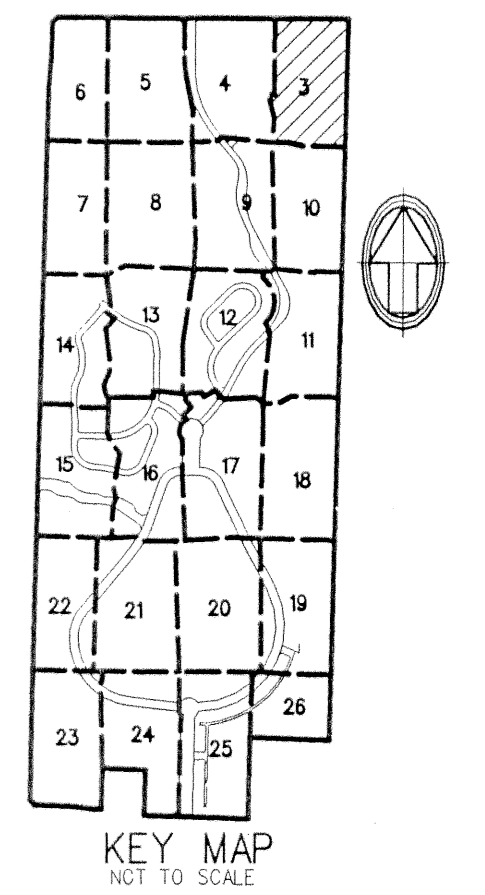
EVERGRENE PLAT TWO

A REPLAT OF A PORTION OF TRACT "A", "EVERGRENE" (P.B. 93, PGS. 117-119, P.B.C.R.)
CITY OF PALM BEACH GARDENS, PALM BEACH COUNTY, FLORIDA



SCALE: 1"=40'

SHEET 3 OF 26



KEY MAP
NOT TO SCALE

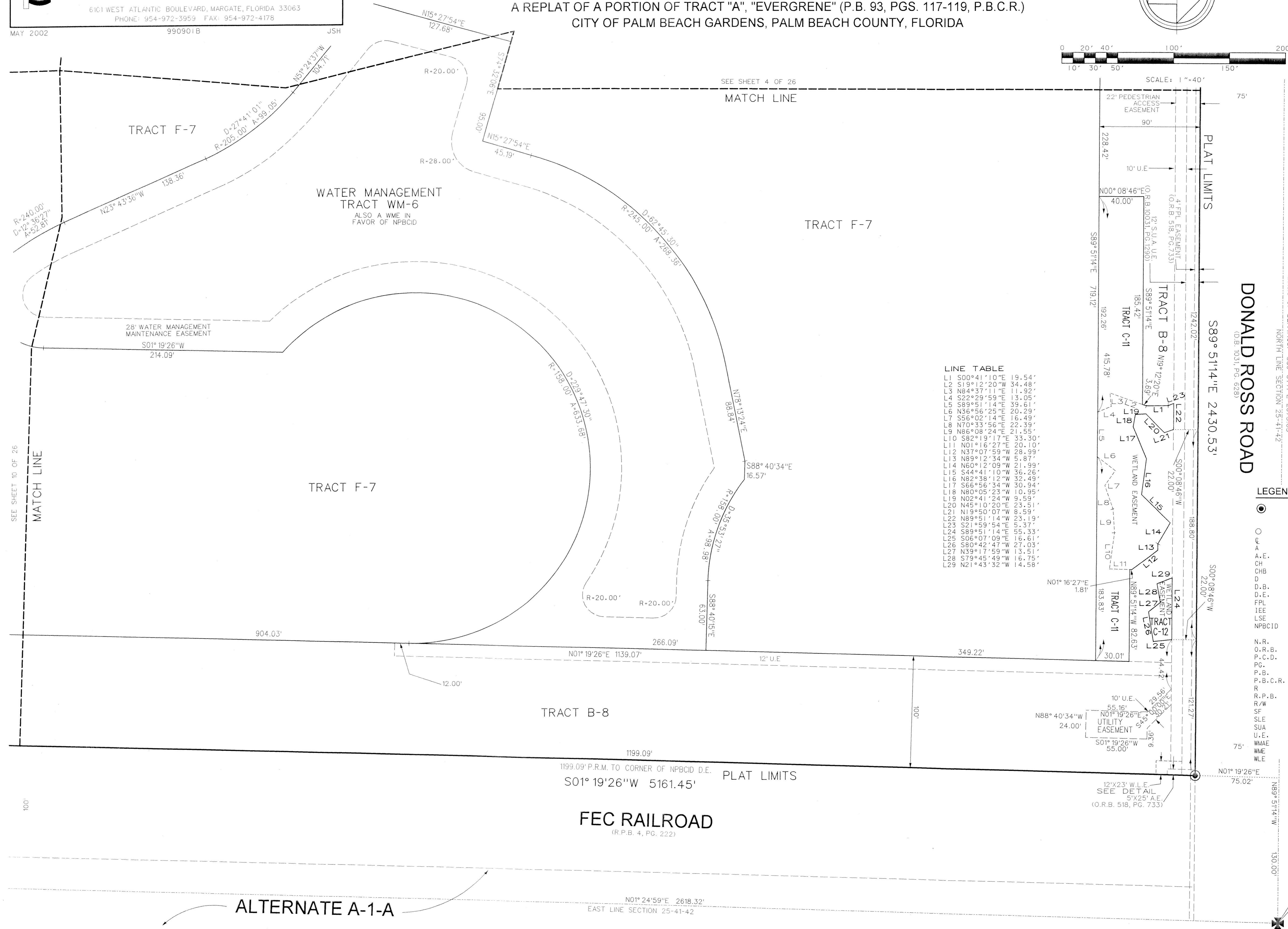
DONALD ROSS ROAD
(O.R.B. 1031, PG. 928)

LEGEND:

- SET PERMANENT REFERENCE MONUMENT (P.R.M.) • LB2936 UNLESS OTHERWISE NOTED
- PERMANENT CONTROL POINT
- CENTERLINE
- ARC LENGTH
- ANCHOR EASEMENT
- CHORD
- CHORD BEARING
- DELTA (CENTRAL ANGLE)
- DEED BOOK
- DRAINAGE EASEMENT
- FLORIDA POWER & LIGHT COMPANY
- INGRESS EGRESS EASEMENT
- LIFT STATION EASEMENT
- NORTHERN PALM BEACH COUNTY IMPROVEMENT DISTRICT
- NON-RADIAL
- OFFICIAL RECORDS BOOK
- PLANNED COMMUNITY DEVELOPMENT
- PAGE
- PLAT BOOK
- PALM BEACH COUNTY RECORDS
- RADIUS
- ROAD PLAT BOOK
- RIGHT-OF-WAY
- SQUARE FEET
- SEWER LINE EASEMENT
- SEACOAST UTILITY AUTHORITY
- UTILITY EASEMENT
- WATER MANAGEMENT ACCESS EASEMENT
- WATER MANAGEMENT EASEMENT
- WATER LINE EASEMENT

LINE TABLE

| | | |
|-----|-------------|--------|
| L1 | S00°41'10"E | 19.54' |
| L2 | S19°12'20"W | 34.48' |
| L3 | N84°37'11"E | 11.92' |
| L4 | S22°29'59"W | 13.05' |
| L5 | S89°51'14"W | 39.91' |
| L6 | N36°55'25"E | 20.23' |
| L7 | S56°02'14"W | 16.49' |
| L8 | N70°33'56"W | 22.39' |
| L9 | N86°08'24"W | 21.55' |
| L10 | S82°19'17"W | 33.30' |
| L11 | N01°16'27"E | 20.10' |
| L12 | N37°07'59"W | 28.99' |
| L13 | N89°12'34"W | 5.87' |
| L14 | N60°12'09"W | 21.99' |
| L15 | S44°41'10"W | 36.26' |
| L16 | N82°38'12"W | 32.49' |
| L17 | S66°56'34"W | 50.94' |
| L18 | N80°05'23"W | 10.95' |
| L19 | N02°41'24"W | 9.59' |
| L20 | N45°10'20"E | 23.51' |
| L21 | N19°50'07"W | 8.59' |
| L22 | N89°51'14"W | 23.19' |
| L23 | S21°59'54"W | 5.37' |
| L24 | S89°51'14"W | 55.33' |
| L25 | S06°07'09"E | 16.61' |
| L26 | S80°42'47"W | 27.03' |
| L27 | N39°17'59"W | 13.51' |
| L28 | S79°45'49"W | 16.75' |
| L29 | N21°43'32"W | 14.58' |



FEC RAILROAD
(R.P.B. 4, PG. 222)

ALTERNATE A-1-A

FOUND BRASS DISC IN CONCRETE MONUMENT N.E. CORNER SECTION 25-41-42

FILE: F:\AS90001\cadd\p1\of2\p03.dgn
DATE: 16-May-02 16:11