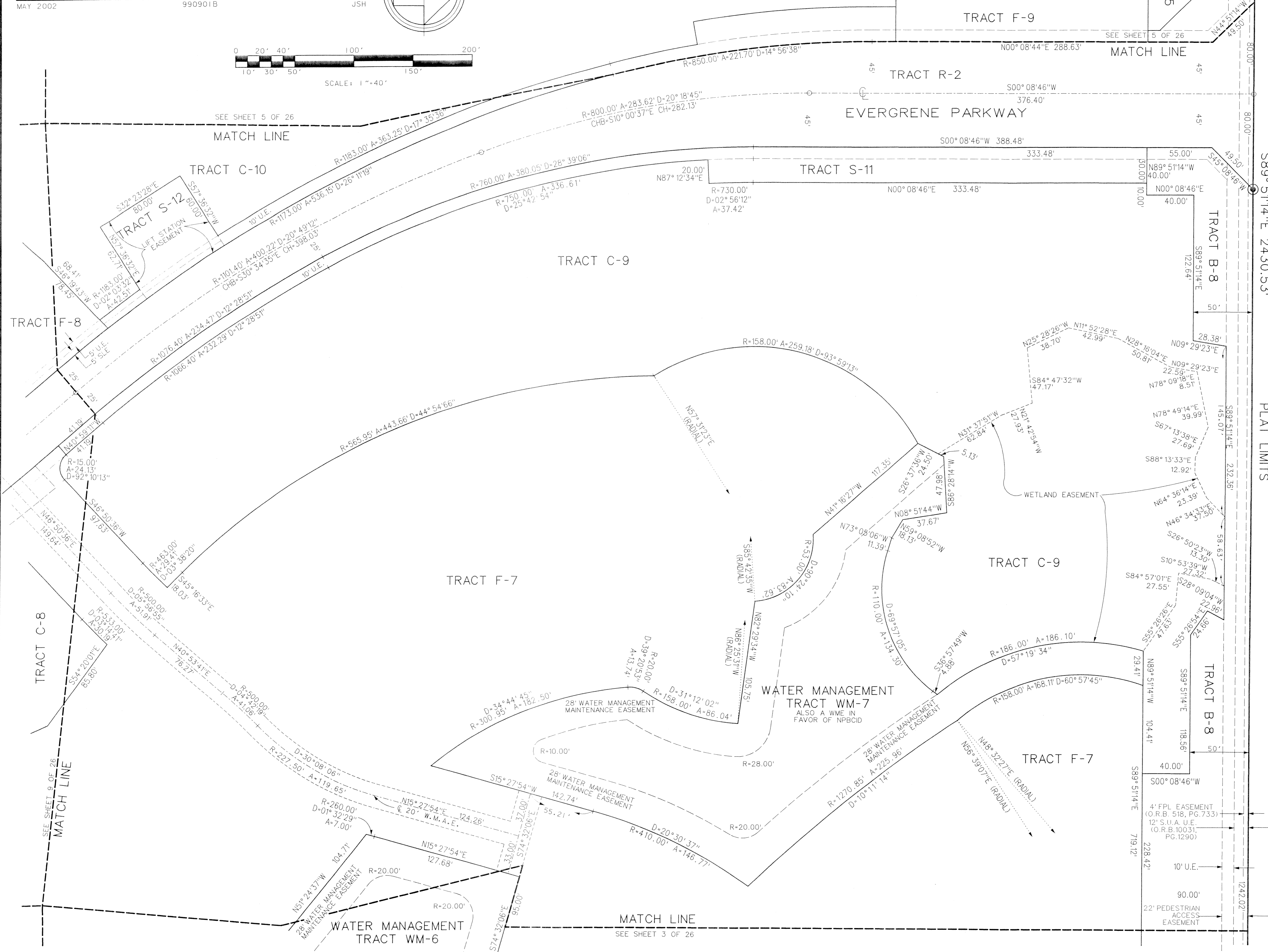
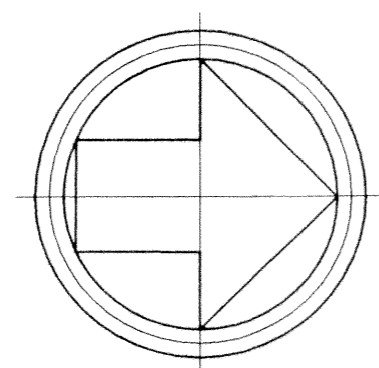
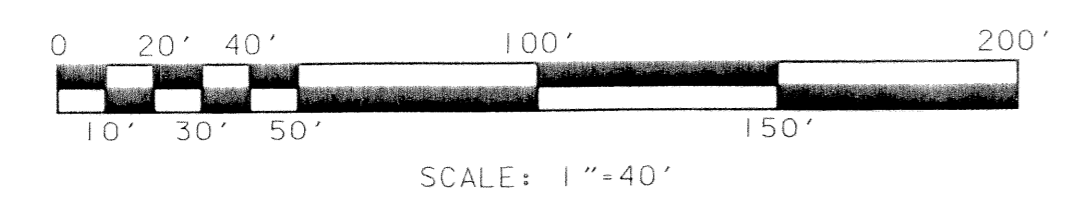


CARNAHAN · PROCTOR · CROSS, INC.
 CONSULTING ENGINEERS · SURVEYORS · PLANNERS
 6101 WEST ATLANTIC BOULEVARD, MARGATE, FLORIDA 33063
 PHONE: 954-972-3959 FAX: 954-972-4178
 MAY 2002 990901B JSH

EVERGRENE PLAT TWO
 A REPLAT OF A PORTION OF TRACT "A", "EVERGRENE" (P.B. 93, PGS. 117-119, P.B.C.R.)
 CITY OF PALM BEACH GARDENS, PALM BEACH COUNTY, FLORIDA



75'
 S89° 51'14" E 2675.65'
 NORTH LINE SECTION 25-41-42

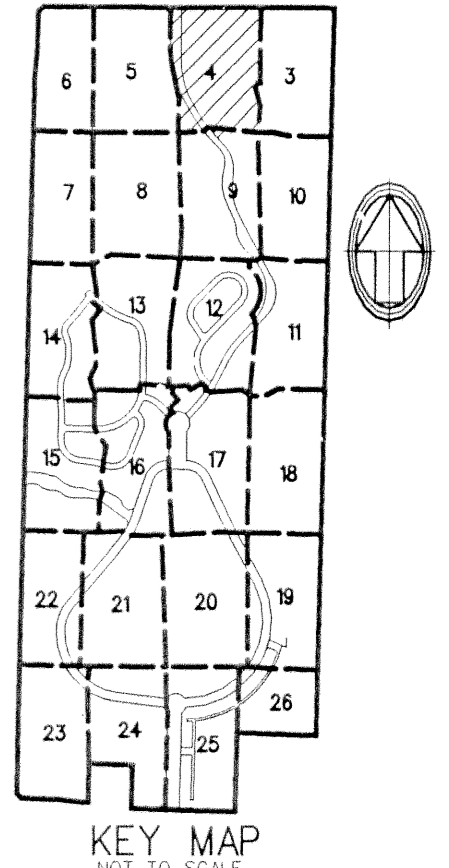
DONALD ROSS ROAD
 (D.B. 10031 PG. 828)

PLAT LIMITS
 S89° 51'14" E 2430.53'

LEGEND:

- SET PERMANENT REFERENCE MONUMENT (P.R.M.) • LB2936 UNLESS OTHERWISE NOTED
- PERMANENT CONTROL POINT
- CENTERLINE
- ARC LENGTH
- ANCHOR EASEMENT
- CHORD
- CHORD BEARING
- DELTA (CENTRAL ANGLE)
- D.B. DEED BOOK
- D.E. DRAINAGE EASEMENT
- FPL FLORIDA POWER & LIGHT COMPANY
- IEE INGRESS EGRESS EASEMENT
- LSE LIFT STATION EASEMENT
- NPCID NORTHERN PALM BEACH COUNTY IMPROVEMENT DISTRICT
- N.R. NON-RADIAL
- O.R.B. OFFICIAL RECORDS BOOK
- P.C.D. PLANNED COMMUNITY DEVELOPMENT
- PG. PAGE
- P.B. PLAT BOOK
- P.B.C.R. PALM BEACH COUNTY RECORDS
- R. RADIUS
- R.P.B. ROAD PLAT BOOK
- R/W RIGHT-OF-WAY
- SF SQUARE FEET
- SLE SEWER LINE EASEMENT
- SUA SEACOAST UTILITY AUTHORITY
- U.E. UTILITY EASEMENT
- WMAE WATER MANAGEMENT ACCESS EASEMENT
- WME WATER MANAGEMENT EASEMENT
- WLE WATER LINE EASEMENT

SHEET 4 OF 26



FILE: P:\990901\Acadd\Plat\ct2pp4.dgn
 DATE: 16-May-02 16:11