

CARNAHAN · PROCTOR · CROSS, INC.

CONSULTING ENGINEERS · SURVEYORS · PLANNERS

6101 WEST ATLANTIC BOULEVARD, MARGATE, FLORIDA 33063  
PHONE: 954-972-3959 FAX: 954-972-4178

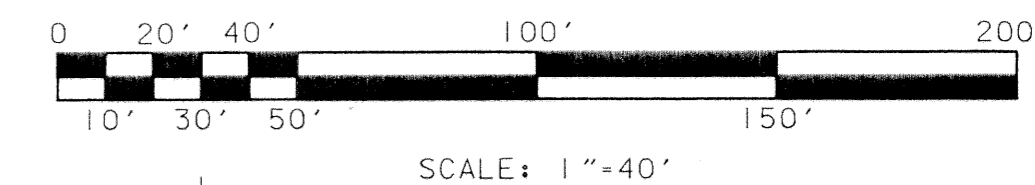
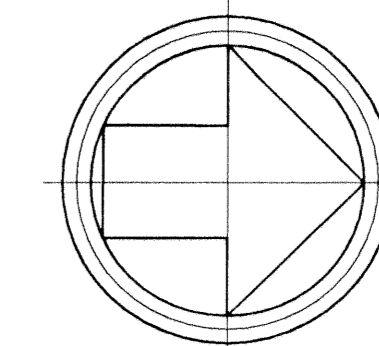
MAY 2002

990901B

JSH

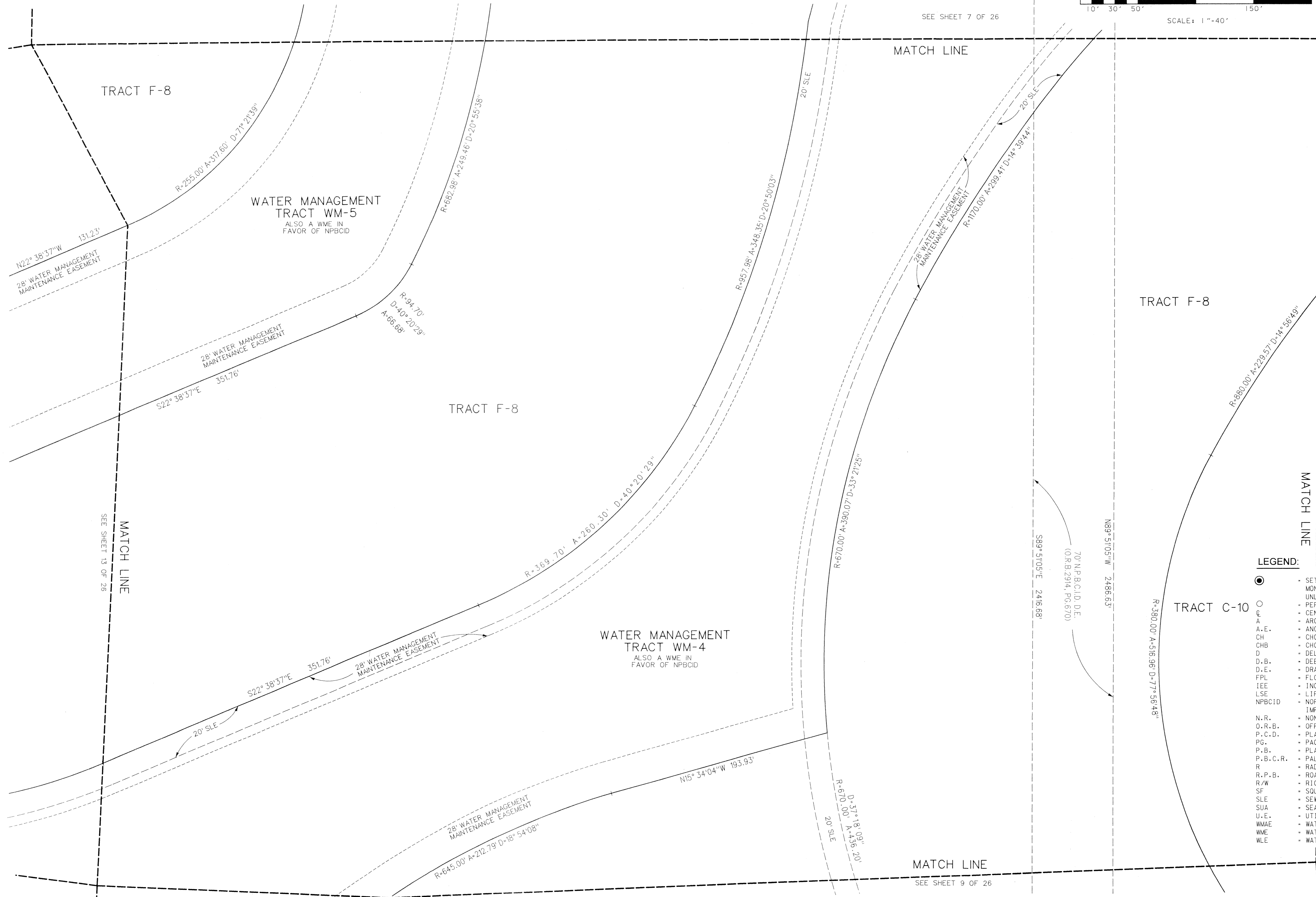
# EVERGRENE PLAT TWO

A REPLAT OF A PORTION OF TRACT "A", "EVERGRENE" (P.B. 93, PGS. 117-119, P.B.C.R.)  
CITY OF PALM BEACH GARDENS, PALM BEACH COUNTY, FLORIDA

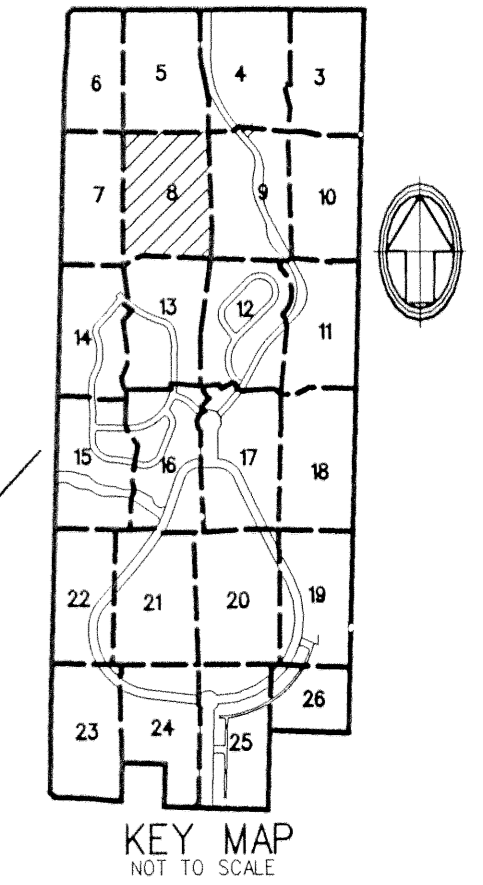


SEE SHEET 7 OF 26

MATCH LINE



SHEET 8 OF 26



**LEGEND:**

- SET PERMANENT REFERENCE MONUMENT (P.R.M.) • LB2936 UNLESS OTHERWISE NOTED
- PERMANENT CONTROL POINT
- CENTERLINE
- ARC LENGTH
- ANCHOR EASEMENT
- CHORD
- CHORD BEARING
- DELTA (CENTRAL ANGLE)
- DEED BOOK
- DRAINAGE EASEMENT
- FLORIDA POWER & LIGHT COMPANY
- INGRESS EGRESS EASEMENT
- LIFT STATION EASEMENT
- NORTHERN PALM BEACH COUNTY IMPROVEMENT DISTRICT
- NON-RADIAL
- OFFICIAL RECORDS BOOK
- PLANNED COMMUNITY DEVELOPMENT
- PAGE
- PLAT BOOK
- PALM BEACH COUNTY RECORDS
- RADIUS
- ROAD PLAT BOOK
- RIGHT-OF-WAY
- SQUARE FEET
- SEWER LINE EASEMENT
- SEACOAST UTILITY AUTHORITY
- UTILITY EASEMENT
- WATER MANAGEMENT ACCESS EASEMENT
- WATER MANAGEMENT EASEMENT
- WATER LINE EASEMENT

SEE SHEET 9 OF 26  
MATCH LINE

MATCH LINE

SEE SHEET 9 OF 26

FILE: r:\990901\cadd\pl\at2ppb.dgn  
DATE: 15-May-02 16:13