



CARNAHAN · PROCTOR · CROSS, INC.

CONSULTING ENGINEERS · SURVEYORS · PLANNERS

6101 WEST ATLANTIC BOULEVARD, MARGATE, FLORIDA 33063
PHONE: 954-972-3959 FAX: 954-972-4178

MAY 2002

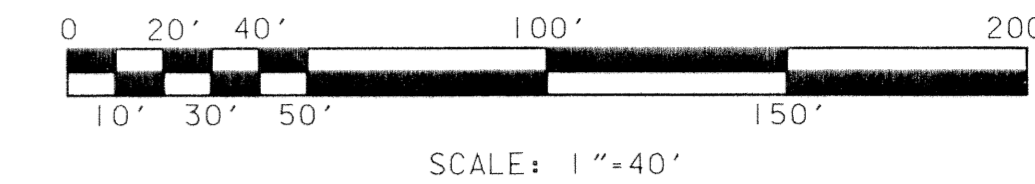
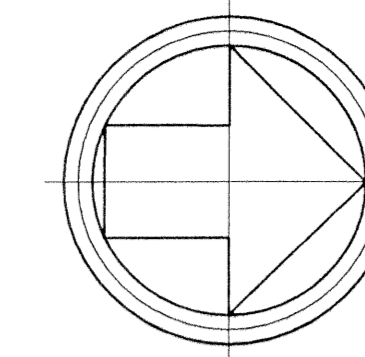
990901B

JSH

EVERGRENE P.C.D.

EVERGRENE PLAT TWO

A REPLAT OF A PORTION OF TRACT "A", "EVERGRENE" (P.B. 93, PGS. 117-119, P.B.C.R.)
CITY OF PALM BEACH GARDENS, PALM BEACH COUNTY, FLORIDA

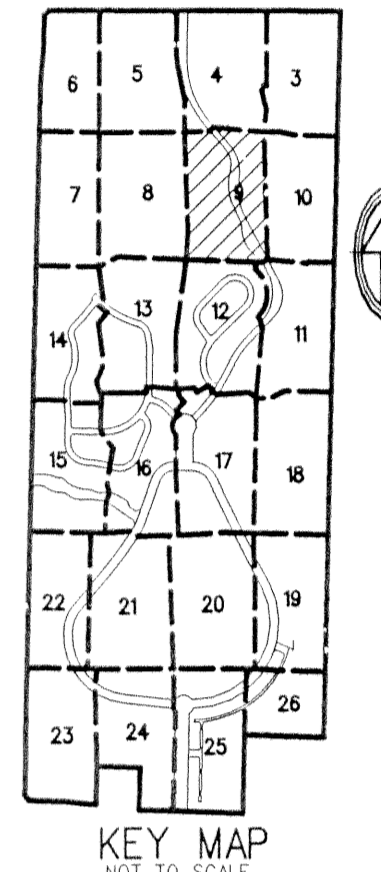
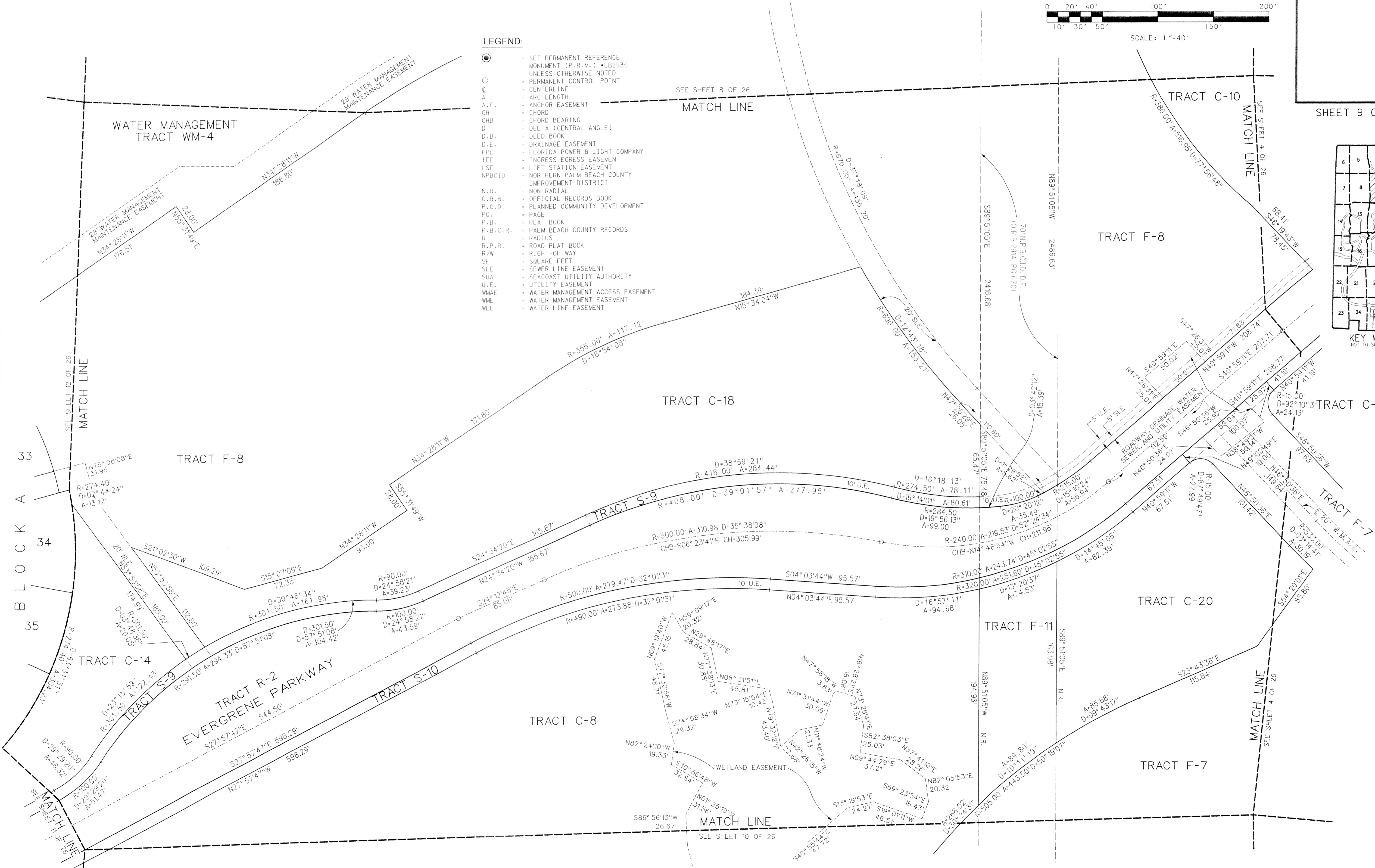


37

SHEET 9 OF 26

LEGEND:

- SET PERMANENT REFERENCE MONUMENT (P.R.M.) • LB2936 UNLESS OTHERWISE NOTED
- PERMANENT CONTROL POINT
- CENTERLINE
- A — ARC LENGTH
- A.E. — ANCHOR EASEMENT
- CH — CHORD
- CHB — CHORD BEARING
- D — DELTA (CENTRAL ANGLE)
- D.B. — DEED BOOK
- D.E. — DRAINAGE EASEMENT
- FPL — FLORIDA POWER & LIGHT COMPANY
- IEE — INGRESS EGRESS EASEMENT
- LSE — LIFT STATION EASEMENT
- NPBCID — NORTHERN PALM BEACH COUNTY IMPROVEMENT DISTRICT
- N.R. — NON-RADIAL
- O.R.B. — OFFICIAL RECORDS BOOK
- P.C.D. — PLANNED COMMUNITY DEVELOPMENT
- PG. — PAGE
- P.B. — PLAT BOOK
- P.B.C.R. — PALM BEACH COUNTY RECORDS
- R — RADIUS
- R.P.B. — ROAD PLAT BOOK
- R/W — RIGHT-OF-WAY
- SF — SQUARE FEET
- SLE — SEWER LINE EASEMENT
- SUA — SEACOAST UTILITY AUTHORITY
- U.E. — UTILITY EASEMENT
- WMAE — WATER MANAGEMENT ACCESS EASEMENT
- WME — WATER MANAGEMENT EASEMENT
- WLE — WATER LINE EASEMENT



FILE: c:\1990901\cadd\plot2pp9.dgn
DATE: 16-May-02 16:14