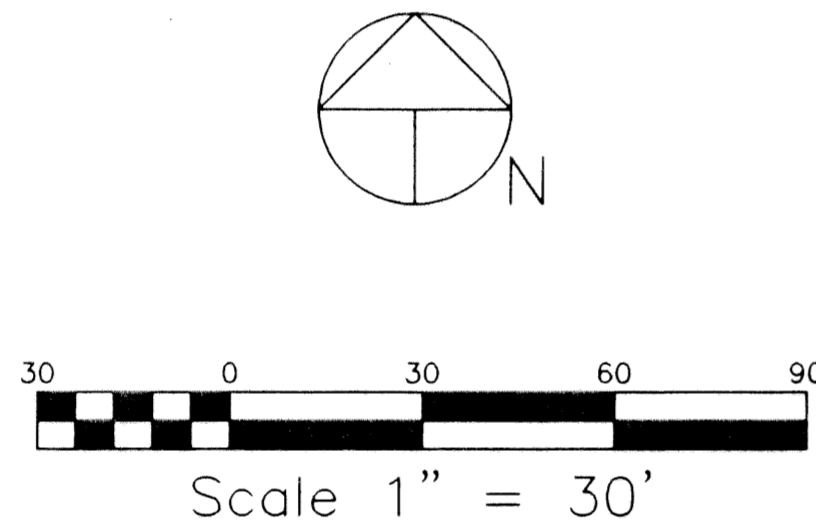
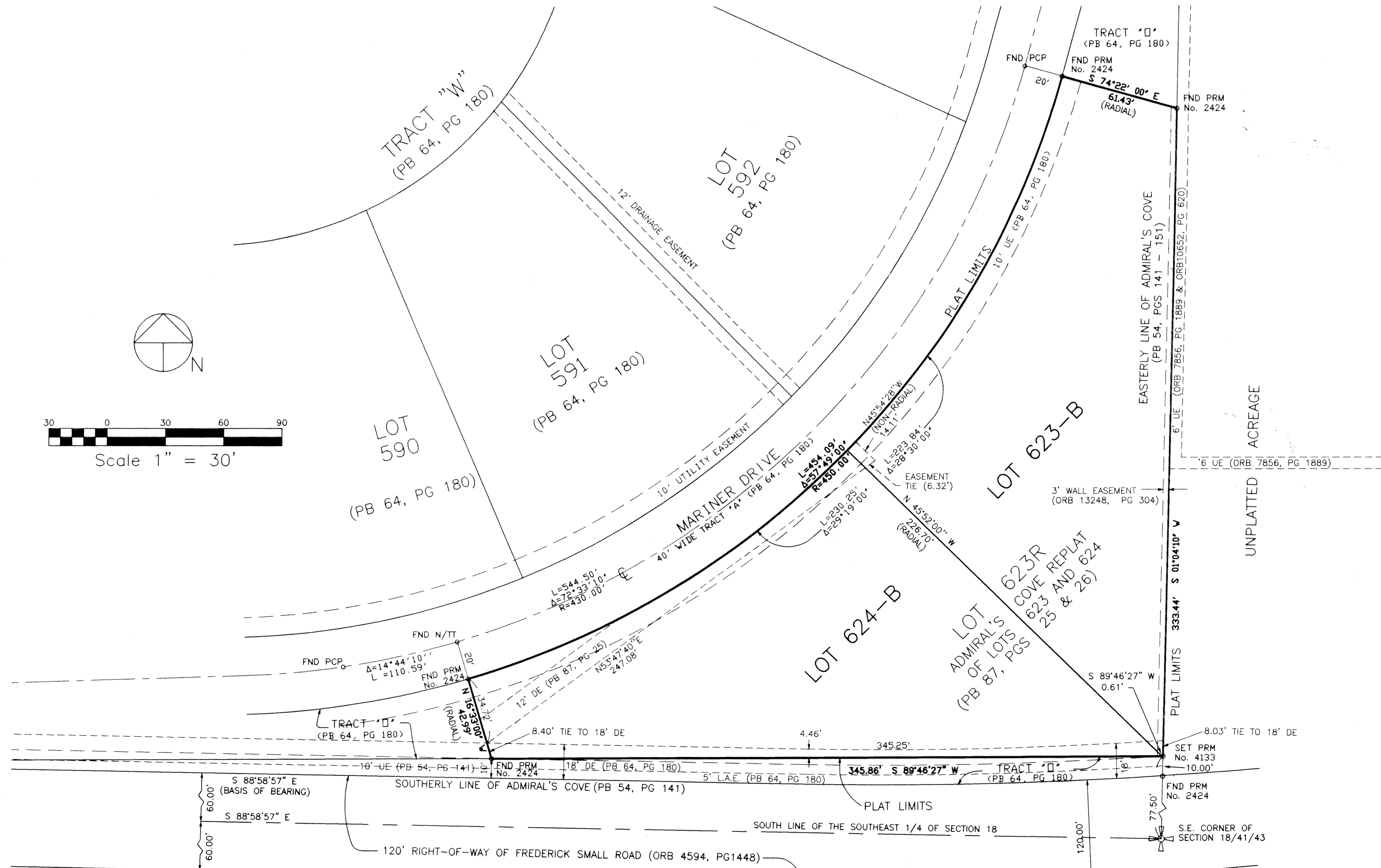


ADMIRAL'S CORNER

A REPLAT OF ADMIRAL'S COVE REPLAT OF LOTS 623 AND 624
 RECORDED IN PLAT BOOK 87, PAGES 25 & 26
 OF THE PUBLIC RECORDS OF PALM BEACH COUNTY, FLORIDA
 AND LYING IN SECTION 18, TOWNSHIP 41 SOUTH, RANGE 43 EAST,
 TOWN OF JUPITER, PALM BEACH COUNTY, FLORIDA

APRIL 2002

SHEET 2 OF 2



THIS INSTRUMENT WAS PREPARED BY ROBERT P. BLASZYK, PSM, IN THE OFFICES OF

RPB Consulting, Inc.
 Land Surveying and Mapping

11211 Prosperity Farms Rd., Suite C-301, Palm Beach Gardens, Florida 33410
 Phone (561) 876-1110 Fax (561) 624-1569
 Certificate of Authorization No. LB 7022

ABBREVIATION LEGEND:

- R/W - RIGHT-OF-WAY
- PRM - PERMANENT REFERENCE MONUMENT
- PCP - PERMANENT CONTROL POINT
- R - RADIUS
- Δ - CENTRAL ANGLE
- L - ARC LENGTH
- CB - CHORD BEARING
- PB - PLAT BOOK
- PGS - PAGES
- No. - NUMBER
- FND - FOUND
- DE - DRAINAGE EASEMENT
- ℄ - CENTERLINE
- N/TT - NAIL IN TIN TAB
- UE - UTILITY EASEMENT
- ORB - OFFICIAL RECORDS BOOK
- PG - PAGE
- L.A.E. - LIMITED ACCESS EASEMENT