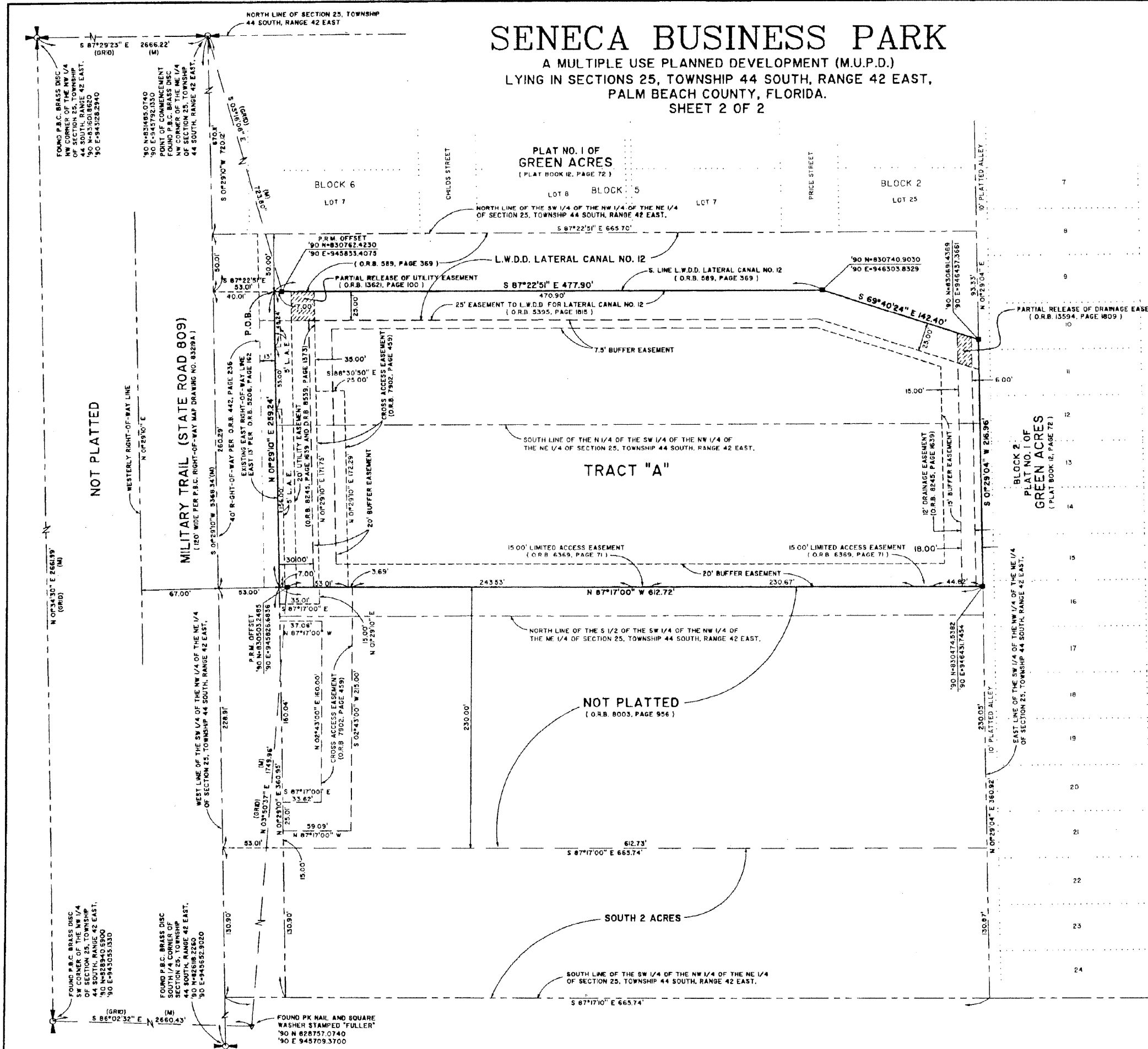


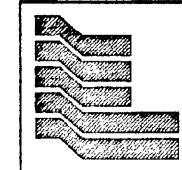
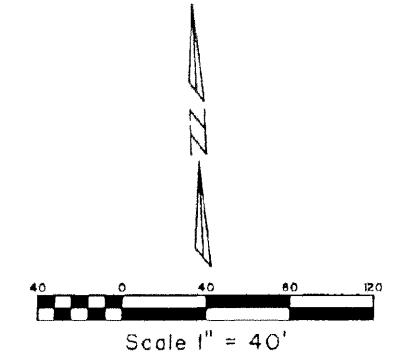
SENECA BUSINESS PARK

A MULTIPLE USE PLANNED DEVELOPMENT (M.U.P.D.)
LYING IN SECTIONS 25, TOWNSHIP 44 SOUTH, RANGE 42 EAST,
PALM BEACH COUNTY, FLORIDA.
SHEET 2 OF 2

STATE OF FLORIDA SS
COUNTY OF PALM BEACH
THIS PLAT WAS FILED FOR RECORD AT _____
ON _____ DAY OF _____ 2002
AND DULY RECORDED IN PLAT BOOK NO. _____
ON PAGE _____
DOROTHY H. WILKEN,
CLERK OF THE CIRCUIT COURT
BY _____ O.C.



COORDINATE NOTE:
STATE PLANE COORDINATES SHOWN ARE GRID DATUM, NAD 83 1990
ADJUSTMENT, FLORIDA EAST ZONE, COORDINATE SYSTEM 1983 STATE
PLANE, TRANSVERSE MERCATOR PROJECTION
LINEAR UNIT = US SURVEY FEET
ALL DISTANCES ARE GROUND
SCALE FACTOR = 1.00003749
GROUND DISTANCE X SCALE FACTOR = GRID DISTANCE
S 0°29'10"W (PLAT BEARING) (00°00'00" ROTATION PLAT TO GRID)
S 0°29'10"W (GRID BEARING)
WEST LINE OF THE SW 1/4 OF THE NW 1/4 OF THE NE 1/4
OF SECTION 25, TOWNSHIP 44 SOUTH, RANGE 42 EAST.



Landmark Surveying & Mapping Inc.
1850 Forest Hill Boulevard
Ph. (561) 433-5405 Suite 100 W.P.B. Florida
L6 # 4396

SENECA BUSINESS PARK