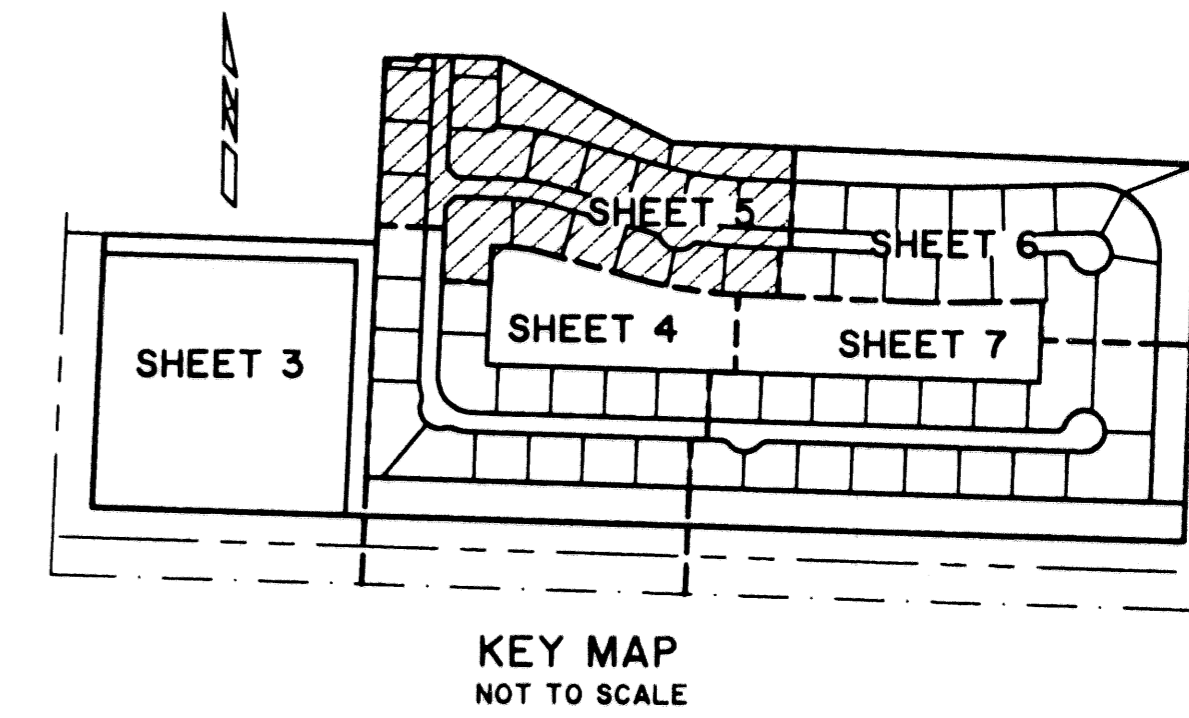


ISLES AT WELLINGTON PLAT VII

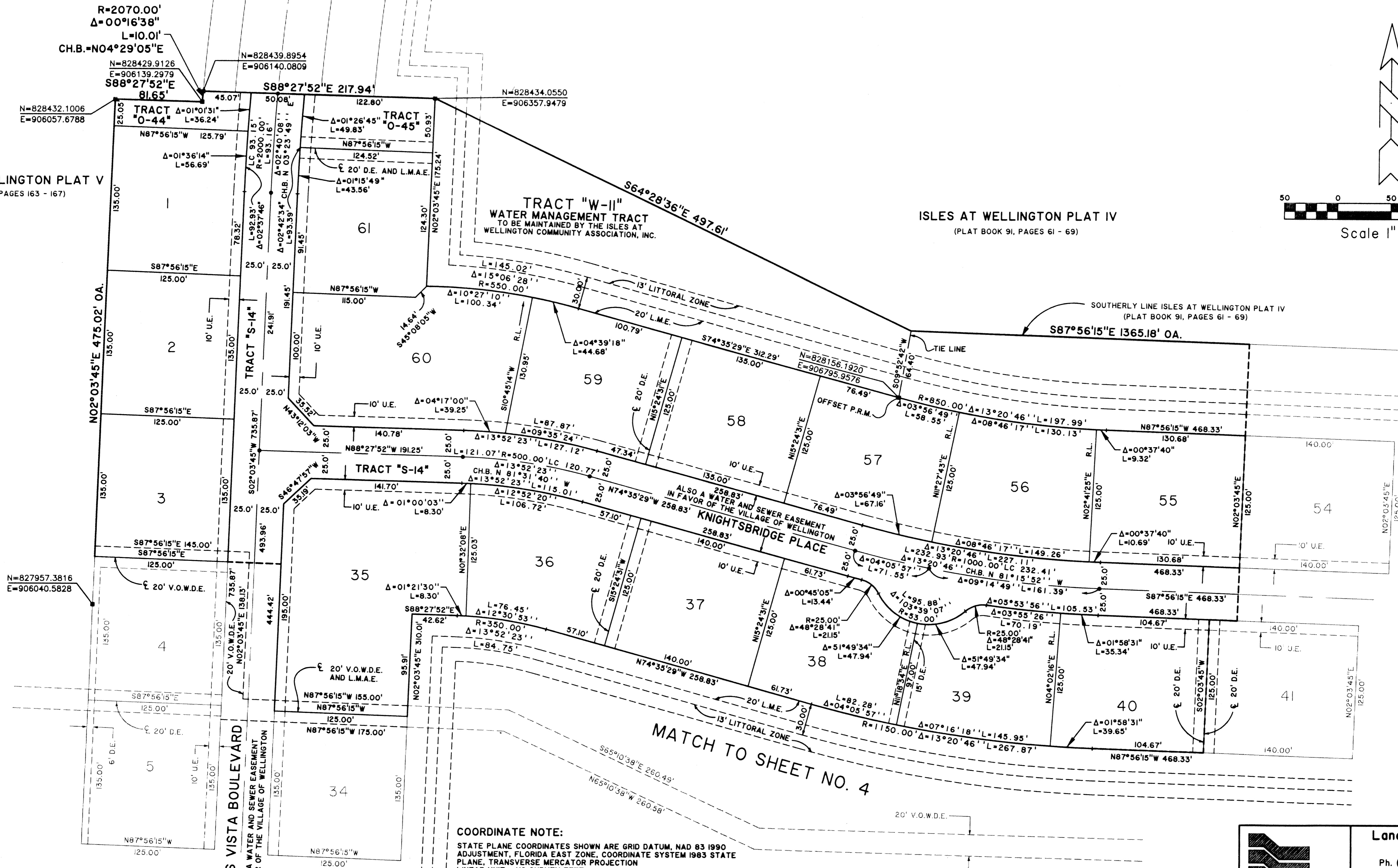
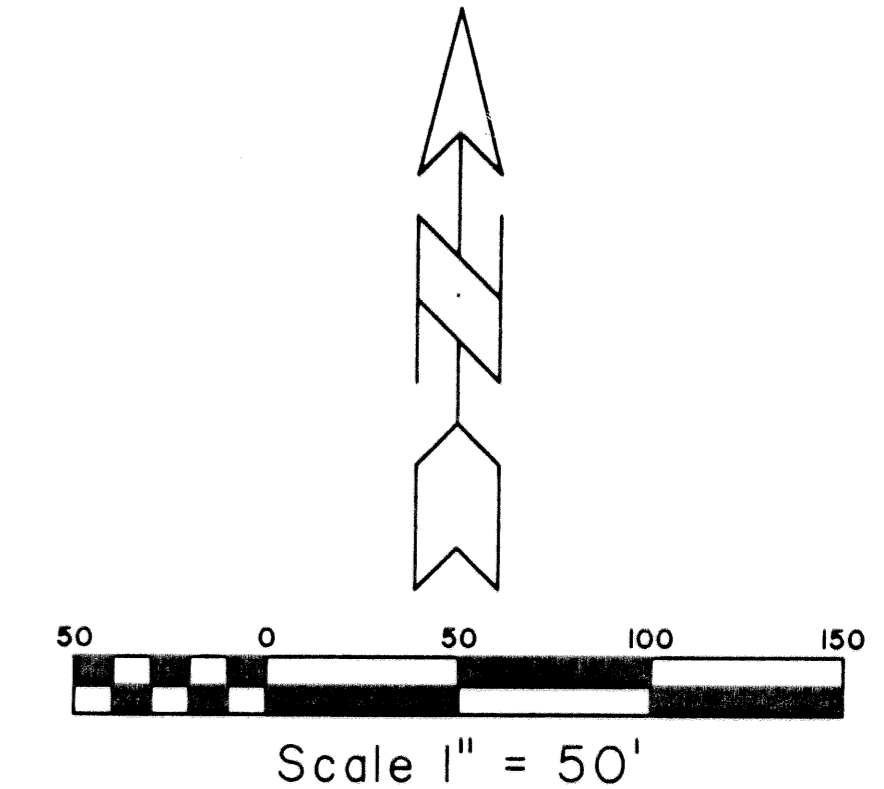
A PORTION OF THE ORANGE POINT PLANNED UNIT DEVELOPMENT
LYING IN SECTION 26, TOWNSHIP 44 SOUTH, RANGE 41 EAST,
VILLAGE OF WELLINGTON, PALM BEACH COUNTY, FLORIDA.
SHEET 5 OF 7 APRIL, 2002



STATE OF FLORIDA SS
COUNTY OF PALM BEACH
THIS PLAT WAS FILED FOR RECORD AT _____
M. THIS _____ DAY OF _____ 2002
AND DULY RECORDED IN PLAT BOOK NO. _____
ON PAGE _____
DOROTHY H. WILKEN,
CLERK OF THE CIRCUIT COURT
BY _____ D.C.

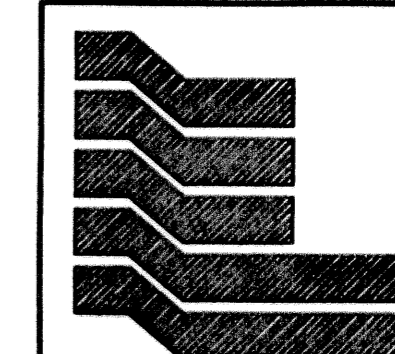
ISLES AT WELLINGTON PLAT V
(PLAT BOOK 92, PAGES 163 - 167)

ISLES AT WELLINGTON PLAT IV
(PLAT BOOK 91, PAGES 61 - 69)



COORDINATE NOTE:
STATE PLANE COORDINATES SHOWN ARE GRID DATUM, NAD 83 1990
ADJUSTMENT, FLORIDA EAST ZONE, COORDINATE SYSTEM 1983 STATE
PLANE, TRANSVERSE MERCATOR PROJECTION
LINEAR UNIT = US SURVEY FEET
ALL DISTANCES ARE GROUND
SCALE FACTOR = 1.000039
GROUND DISTANCE X SCALE FACTOR = GRID DISTANCE
BEARINGS AS SHOWN HERON ARE GRID DATUM, NAD 83 1990
ADJUSTMENT, FLORIDA EAST ZONE.

TRACT "W-12"
WATER MANAGEMENT TRACT
TO BE MAINTAINED BY THE ISLES AT
WELLINGTON COMMUNITY ASSOCIATION, INC.



Landmark Surveying & Mapping Inc.
1850 Forest Hill Boulevard
Ph. (561) 433-5405 Suite 100 W.P.B. Florida
LB # 4396

ISLES AT WELLINGTON PLAT VII
POD "H"

MATCH TO SHEET NO. 6

MATCH TO SHEET NO. 4