

SENECA BUSINESS PARK

A MULTIPLE USE PLANNED DEVELOPMENT (M.U.P.D.)
 LYING IN SECTIONS 25, TOWNSHIP 44 SOUTH, RANGE 42 EAST,
 PALM BEACH COUNTY, FLORIDA.
 SHEET 2 OF 2

STATE OF FLORIDA SS
 COUNTY OF PALM BEACH
 THIS PLAT WAS FILED FOR RECORD AT _____
 M., THIS _____ DAY OF _____ 2002
 AND DULY RECORDED IN PLAT BOOK NO. _____
 ON PAGE _____
 DOROTHY H. WILKEN,
 CLERK OF THE CIRCUIT COURT
 BY _____ D.C.

SUBDIVISION: SENECA BUSINESS PARK
 BOOK: 95
 FLOOD ZONE: B
 QUAD: # 33
 SE: # 33
 TAZ: # 350
 PUD NAME: SENECA BUSINESS PARK

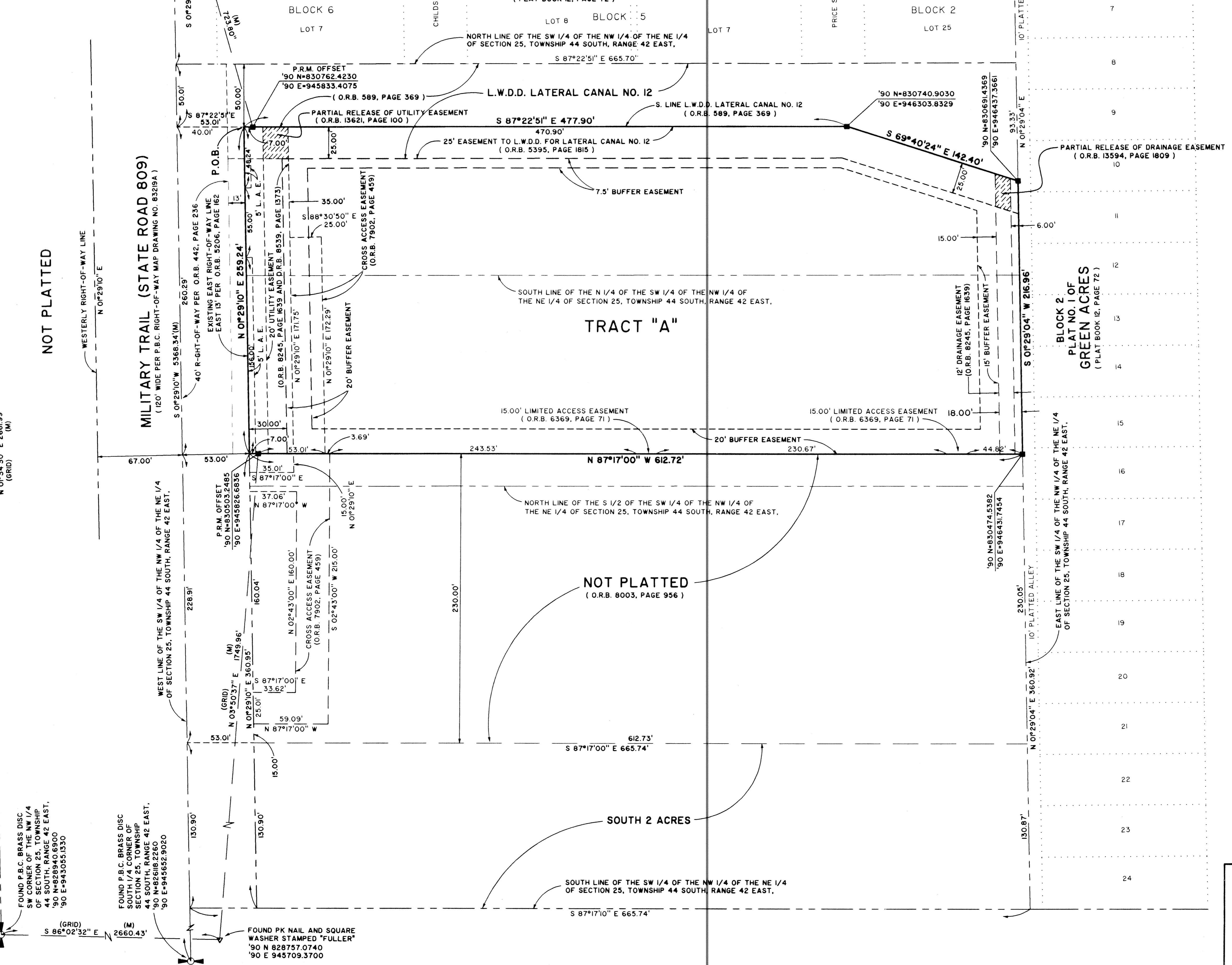
FOUND P.B.C. BRASS DISC
 SW CORNER OF SECTION 25, TOWNSHIP
 44 SOUTH, RANGE 42 EAST.
 '90 N=828940.6900
 '90 E=943055.1330

FOUND P.B.C. BRASS DISC
 SOUTH 1/4 CORNER OF
 SECTION 25, TOWNSHIP
 44 SOUTH, RANGE 42 EAST.
 '90 N=82618.2260
 '90 E=945652.9020

FOUND PK NAIL AND SQUARE
 WASHER STAMPED "FULLER"
 '90 N 828757.0740
 '90 E 945709.3700

FOUND P.B.C. BRASS DISC
 NW CORNER OF THE NW 1/4
 OF SECTION 25, TOWNSHIP
 44 SOUTH, RANGE 42 EAST.
 '90 N=83160.8620
 '90 E=943128.2940

'90 N=831485.0740
 '90 E=945792.1330
 POINT OF COMMENCEMENT
 FOUND P.B.C. BRASS DISC
 NW CORNER OF THE NE 1/4
 OF SECTION 25, TOWNSHIP
 44 SOUTH, RANGE 42 EAST.



NOT PLATTED

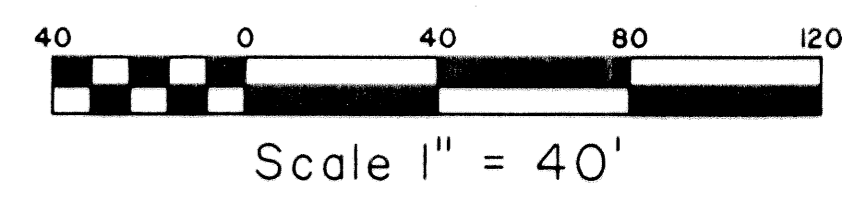
MILITARY TRAIL (STATE ROAD 809)
 (120' WIDE PER P.B.C. RIGHT-OF-WAY MAP DRAWING NO. 8329A)

TRACT "A"

NOT PLATTED
(O.R.B. 8003, PAGE 956)

BLOCK 2
 PLAT NO. 1 OF
 GREEN ACRES
 (PLAT BOOK 12, PAGE 72)

COORDINATE NOTE:
 STATE PLANE COORDINATES SHOWN ARE GRID DATUM, NAD 83 1990
 ADJUSTMENT, FLORIDA EAST ZONE, COORDINATE SYSTEM 1983 STATE
 PLANE, TRANSVERSE MERCATOR PROJECTION
 LINEAR UNIT = US SURVEY FEET
 ALL DISTANCES ARE GROUND
 SCALE FACTOR = 1.00003749
 GROUND DISTANCE X SCALE FACTOR = GRID DISTANCE
 S 0°29'10"W (PLAT BEARING) (00°00'00" ROTATION PLAT TO GRID)
 S 0°29'10"W (GRID BEARING)
 WEST LINE OF THE SW 1/4 OF THE NW 1/4 OF THE NE 1/4
 OF SECTION 25, TOWNSHIP 44 SOUTH, RANGE 42 EAST.



Landmark Surveying & Mapping Inc.
 1850 Forest Hill Boulevard
 Ph. (561) 433-5405 Suite 100 W.P.B. Florida
 LB # 4396

SENECA BUSINESS PARK