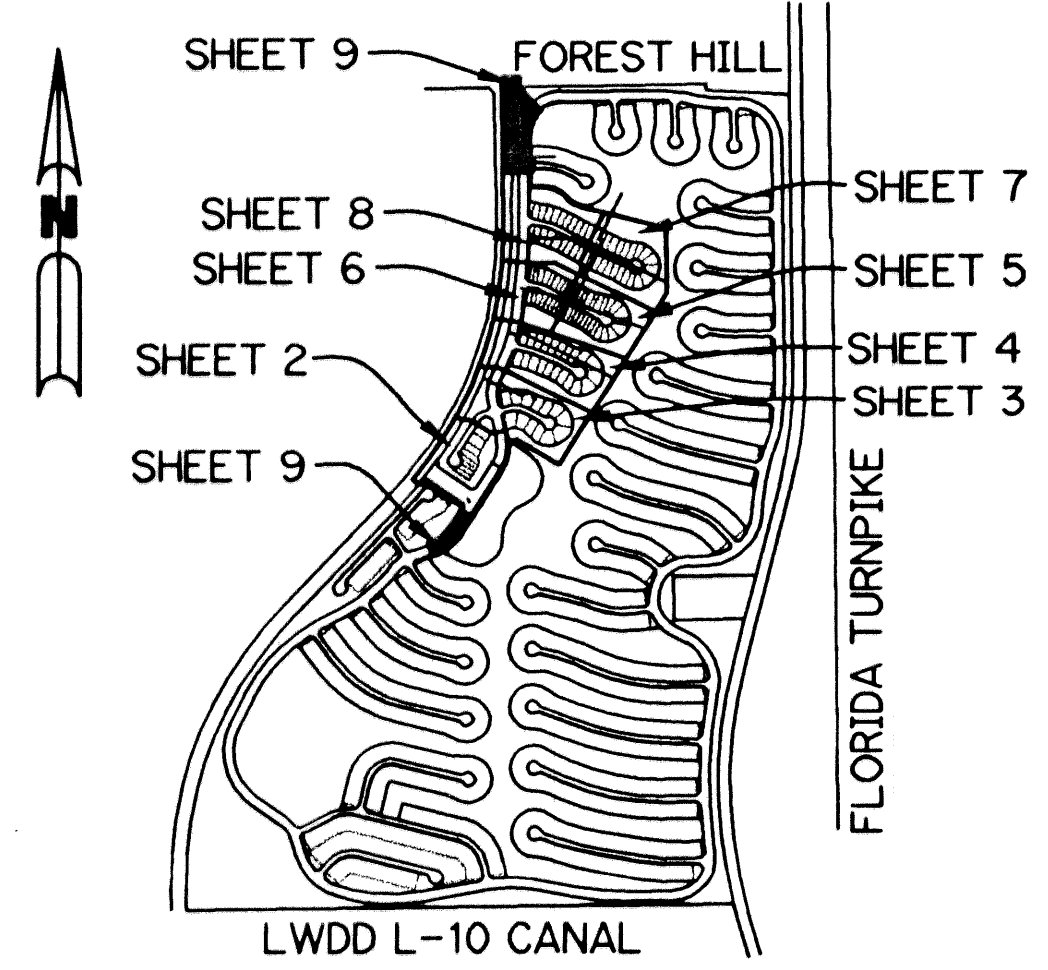


VILLAGEWALK OF WELLINGTON - PLAT ONE

BEING A REPLAT OF A PORTION OF TRACTS 52, 61, 62, BLOCK 16 AND TRACTS 3, 4, 5, 12, 13, 14, 20, 21, 22, 28, BLOCK 20 ACCORDING TO THE PLAT OF PALM BEACH FARMS COMPANY PLAT NO. 3 AS RECORDED IN PLAT BOOK 2, PAGES 45 THROUGH 54, INCLUSIVE, OF THE PUBLIC RECORDS OF PALM BEACH COUNTY, FLORIDA. LYING IN SECTIONS 8 AND 17, TOWNSHIP 44 SOUTH, RANGE 42 EAST. VILLAGE OF WELLINGTON, PALM BEACH COUNTY, FLORIDA

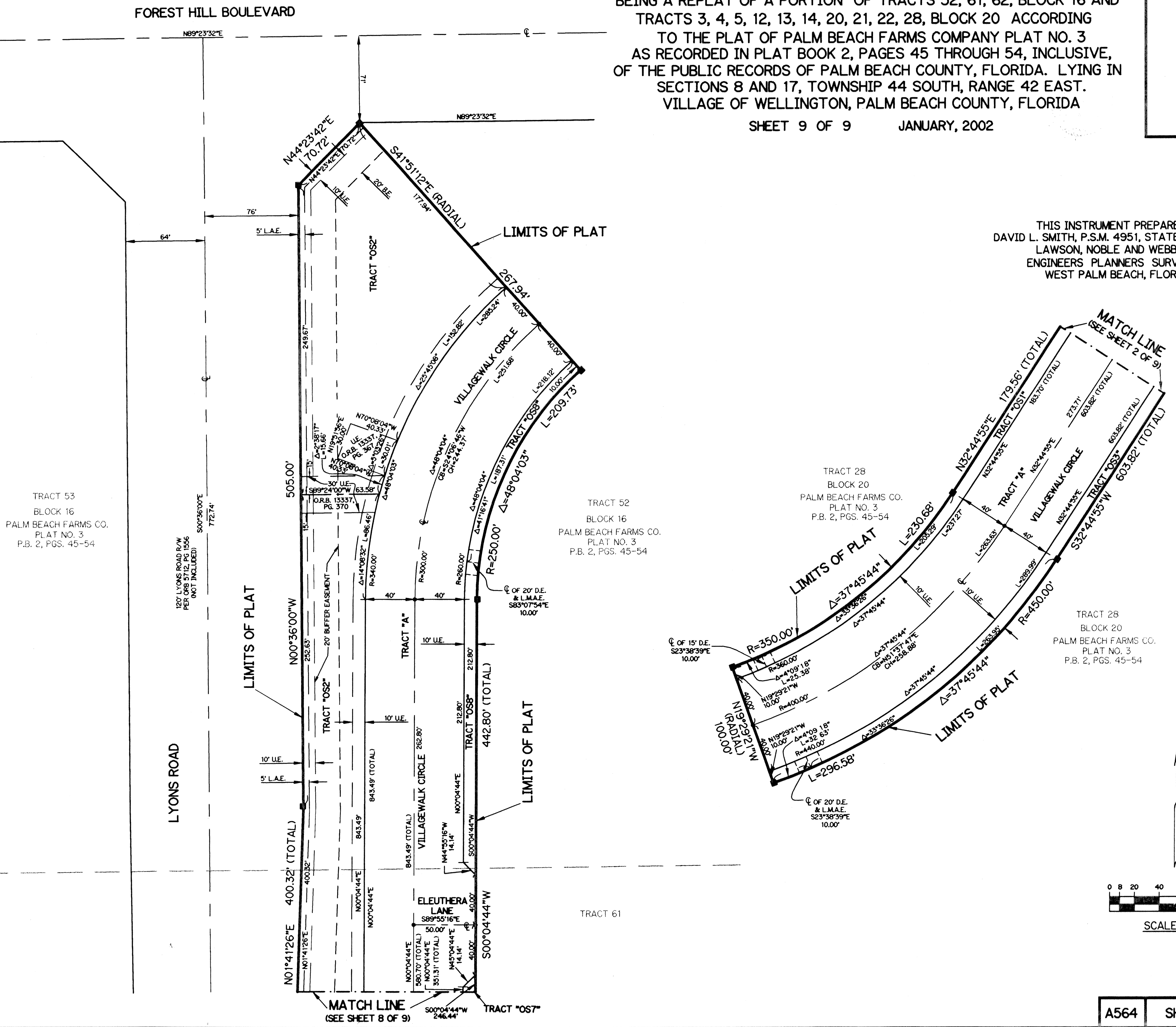
SHEET 9 OF 9 JANUARY, 2002



LOCATION & KEY MAP
SEC. 8 & 17 TWP. 44 S RGE. 42 E

- LEGEND:**
- - PERMANENT REFERENCE MONUMENT, LB #6674
 - - PERMANENT CONTROL POINT, LB #6674
 - △ - DELTA ANGLE
 - ⊕ - CENTERLINE
 - D.B. - DEED BOOK
 - D.E. - DRAINAGE EASEMENT
 - L - ARC LENGTH
 - L.A.E. - LIMITED ACCESS EASEMENT
 - L.M.A.E. - LAKE MAINTENANCE ACCESS EASEMENT
 - L.M.E. - LAKE MAINTENANCE EASEMENT
 - L.W.D.D. - LAKE WORTH DRAINAGE DISTRICT
 - N.R. - NOT RADIAL
 - N.T.S. - NOT TO SCALE
 - P.R.M. - PERMANENT REFERENCE MONUMENT
 - O.R.B. - OFFICIAL RECORD BOOK
 - P.B. - PLAT BOOK
 - PGS. - PAGES
 - P.S.M. - PROFESSIONAL SURVEYOR AND MAPPER
 - R - RADIUS
 - R/W - RIGHT-OF-WAY
 - S.T. - SURVEY TIE
 - U.E. - UTILITY EASEMENT
 - V.E. - VILLAGEWALK EASEMENT
 - B.E. - BUFFER EASEMENT
 - P.O.C. - POINT OF COMMENCEMENT
 - P.O.B. - POINT OF BEGINNING
 - RAD - RADIAL
 - CH - CHORD LENGTH
 - CB - CHORD BEARING

THIS INSTRUMENT PREPARED BY
DAVID L. SMITH, P.S.M. 4951, STATE OF FLORIDA
LAWSON, NOBLE AND WEBB, INC.
ENGINEERS PLANNERS SURVEYORS
WEST PALM BEACH, FLORIDA

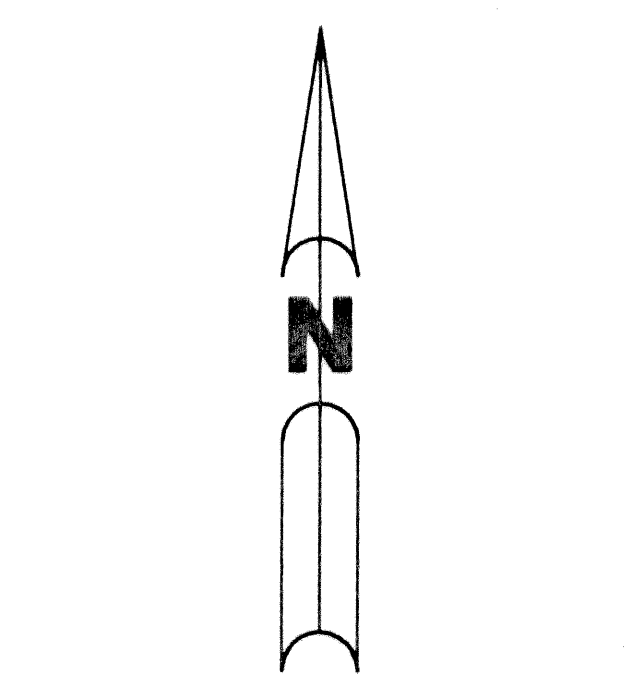


TRACT 53
BLOCK 16
PALM BEACH FARMS CO.
PLAT NO. 3
P.B. 2, PGS. 45-54

TRACT 52
BLOCK 16
PALM BEACH FARMS CO.
PLAT NO. 3
P.B. 2, PGS. 45-54

TRACT 28
BLOCK 20
PALM BEACH FARMS CO.
PLAT NO. 3
P.B. 2, PGS. 45-54

TRACT 28
BLOCK 20
PALM BEACH FARMS CO.
PLAT NO. 3
P.B. 2, PGS. 45-54



SCALE: 1" = 40'