

# PGA COMMONS PLAT NO. 2

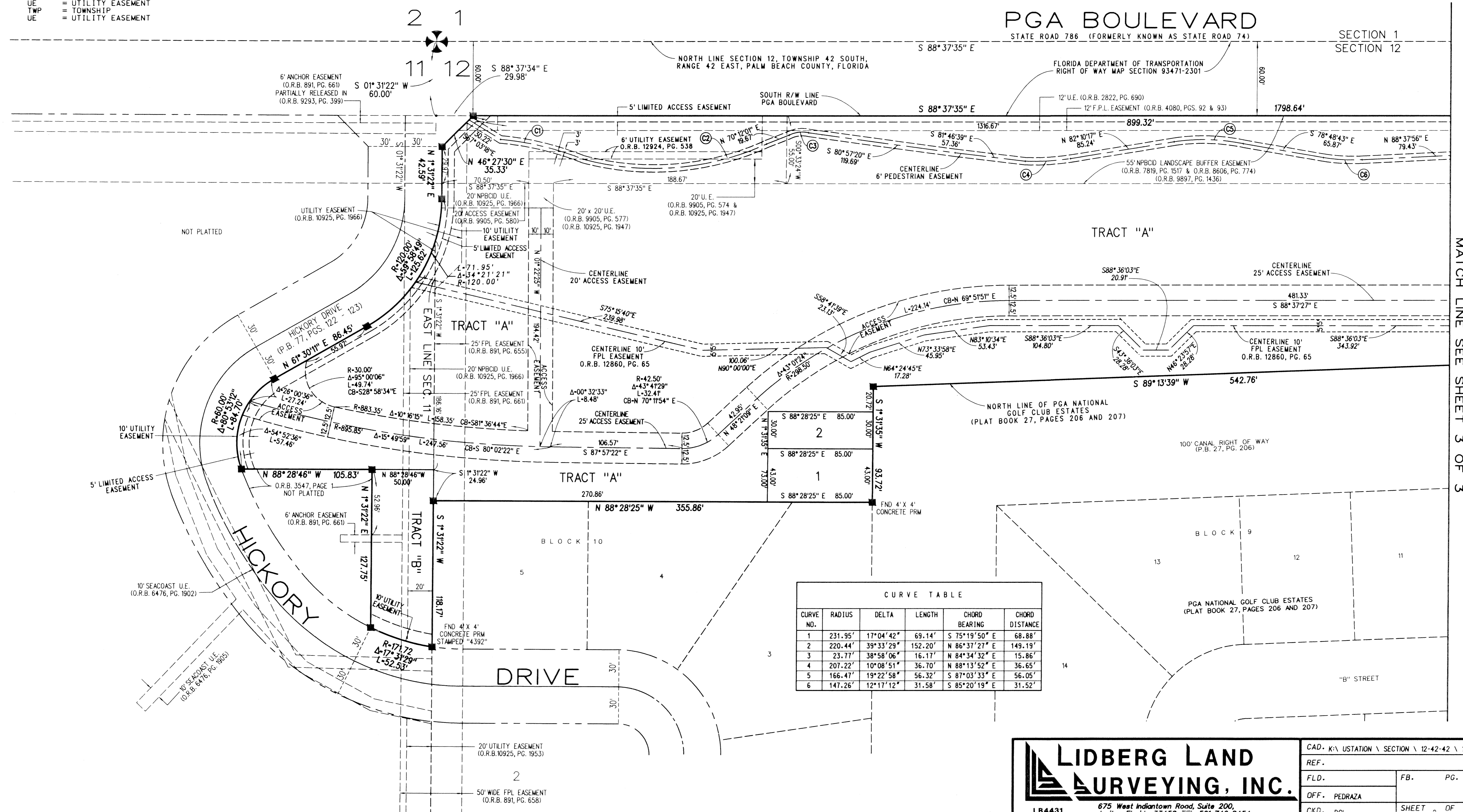
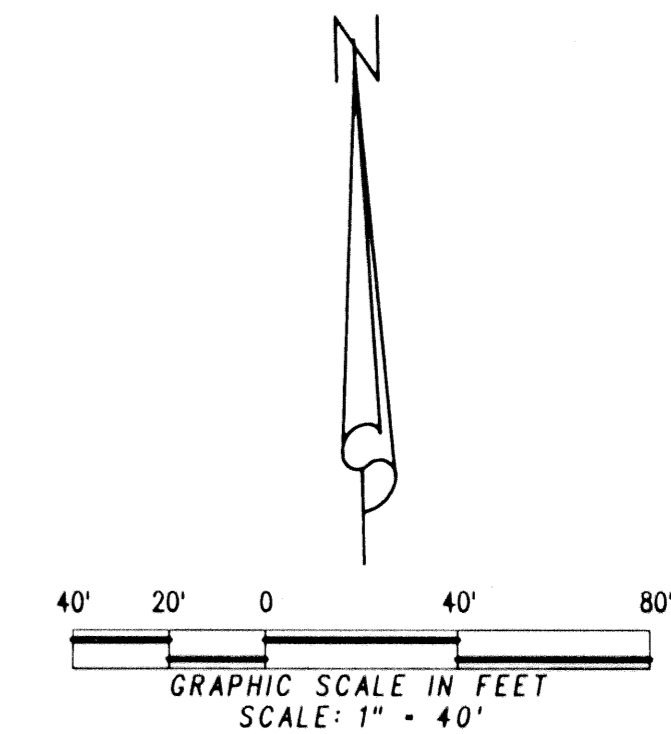
LYING IN SECTIONS 11 AND 12, TOWNSHIP 42 SOUTH, RANGE 42 EAST,  
CITY OF PALM BEACH GARDENS, PALM BEACH COUNTY, FLORIDA

ABBREVIATIONS:

- C/L = CENTERLINE
- CB = CHORD BEARING
- FPL = FLORIDA POWER & LIGHT
- FND = FOUND
- R = RADIUS
- Δ = DELTA ANGLE
- L = ARC LENGTH
- LAE = LIMITED ACCESS EASEMENT
- LB = LICENSE BUSINESS
- MON = MONUMENT
- NPBCID = NORTHERN PALM BEACH COUNTY IMPROVEMENT DISTRICT
- ORB = OFFICIAL RECORD BOOK
- PB = PLAT BOOK
- PG = PAGE(S)
- POB = POINT OF BEGINNING
- POC = POINT OF COMMENCEMENT
- PRM = PERMANENT REFERENCE MONUMENT
- RGE = RANGE
- R/W = RIGHT-OF-WAY
- SEC = SECTION
- UE = UTILITY EASEMENT
- TWP = TOWNSHIP
- UE = UTILITY EASEMENT

SEPTEMBER 2001

SHEET 2 OF 3



CURVE TABLE

CURVE NO.	RADIUS	DELTA	LENGTH	CHORD BEARING	CHORD DISTANCE
1	231.95'	17°04'42"	69.14'	S 75°19'50" E	68.88'
2	220.44'	39°33'29"	152.20'	N 86°37'27" E	149.19'
3	23.77'	38°58'06"	16.17'	N 84°34'32" E	15.86'
4	207.22'	10°08'51"	36.70'	N 88°13'52" E	36.65'
5	166.47'	19°22'58"	56.32'	S 87°03'33" E	56.05'
6	147.26'	12°17'12"	31.58'	S 85°20'19" E	31.52'

**LIDBERG LAND SURVEYING, INC.**

675 West Indiantown Road, Suite 200,  
Jupiter, Florida 33458 TEL. 561-746-8454

CAD. K:\USTATION \ SECTION \ 12-42-42 \ 1940.306 \ 1940.306.2.DGN			
REF.			
F.L.D.	FB.	PG.	JOB 00-194-306
OFF. PEDRAZA			DATE AUG 2001
CKD. DCL	SHEET 2	OF 3	DWG. 000-194P