

PGA COMMONS PLAT NO. 2

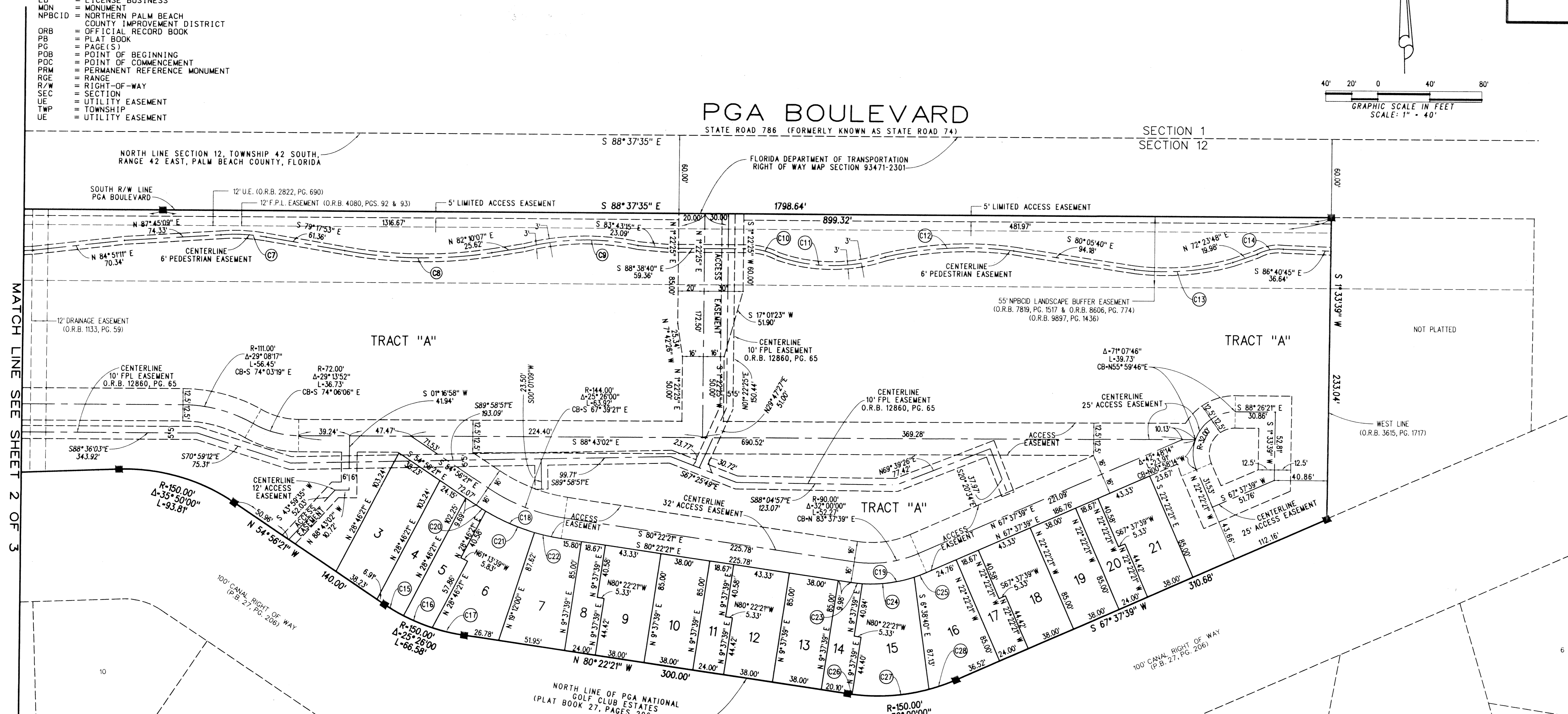
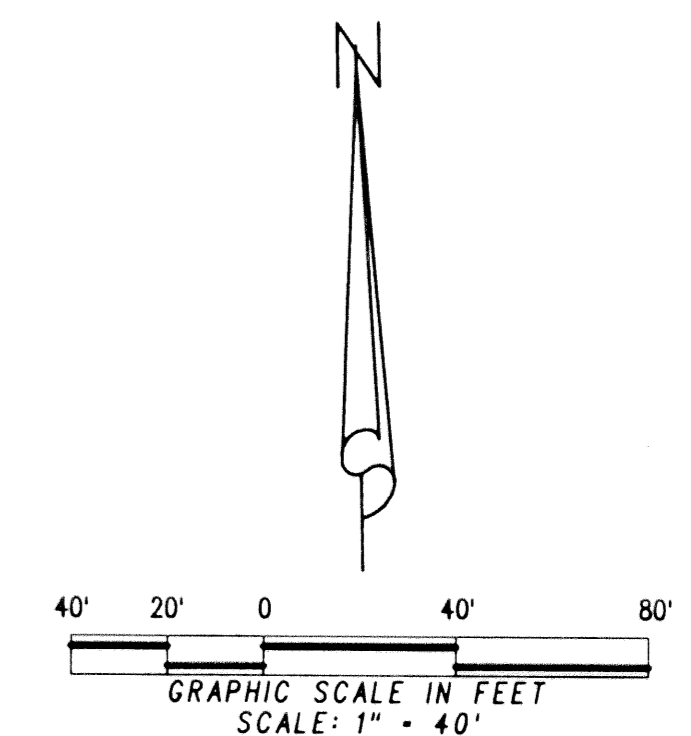
LYING IN SECTIONS 11 AND 12, TOWNSHIP 42 SOUTH, RANGE 42 EAST,
CITY OF PALM BEACH GARDENS, PALM BEACH COUNTY, FLORIDA

SEPTEMBER 2001

SHEET 3 OF 3

ABBREVIATIONS:

- C/L = CENTERLINE
- CB = CHORD BEARING
- FPL = FLORIDA POWER & LIGHT
- FND = FOUND
- R = RADIUS
- Δ = DELTA ANGLE
- L = ARC LENGTH
- LAE = LIMITED ACCESS EASEMENT
- LB = LICENSE BUSINESS
- MON = MONUMENT
- NPBCID = NORTHERN PALM BEACH COUNTY IMPROVEMENT DISTRICT
- ORB = OFFICIAL RECORD BOOK
- PB = PLAT BOOK
- PG = PAGE(S)
- POB = POINT OF BEGINNING
- POC = POINT OF COMMENCEMENT
- PRM = PERMANENT REFERENCE MONUMENT
- RGE = RANGE
- R/W = RIGHT-OF-WAY
- SEC = SECTION
- UE = UTILITY EASEMENT
- TWP = TOWNSHIP
- UE = UTILITY EASEMENT



CURVE TABLE					
CURVE NO.	RADIUS	DELTA	LENGTH	CHORD BEARING	CHORD DISTANCE
7	139.27'	14°21'44"	34.91'	S 86°10'03" E	34.82'
8	342.89'	18°59'59"	113.70'	S 88°09'54" E	113.18'
9	192.71'	26°12'29"	88.15'	N 89°54'21" E	87.38'
10	49.80'	30°14'15"	26.28'	S 76°17'06" E	25.98'
11	127.01'	37°54'32"	84.03'	S 88°41'30" E	82.51'
12	281.21'	20°16'06"	99.48'	N 88°20'26" E	98.96'
13	190.71'	22°54'46"	76.26'	N 86°47'40" E	75.76'
14	33.61'	35°14'01"	20.67'	N 80°04'18" E	20.34'
15	150.00'	09°40'01"	25.31'	N 75°32'20" W	25.28'
16	150.00'	09°12'38"	24.11'	N 66°06'01" W	24.09'
17	150.00'	06°33'21"	17.16'	N 58°13'01" W	17.15'
18	160.00'	25°28'00"	71.02'	S 67°39'21" E	70.44'
19	106.00'	32°00'00"	59.20'	N 83°37'39" E	58.44'

CURVE TABLE					
CURVE NO.	RADIUS	DELTA	LENGTH	CHORD BEARING	CHORD DISTANCE
20	160.00'	03°04'08"	8.57'	S 56°28'26" E	8.57'
21	160.00'	14°46'49"	41.27'	S 65°23'54" E	41.16'
22	160.00'	07°35'03"	21.18'	S 76°34'48" E	21.16'
23	106.00'	04°42'22"	8.71'	S 82°43'44" E	8.70'
24	106.00'	21°52'41"	40.48'	N 83°58'55" E	40.23'
25	106.00'	05°24'57"	10.01'	N 70°20'14" E	10.02'
26	150.00'	00°52'03"	2.27'	S 80°48'24" E	2.27'
27	150.00'	22°45'01"	59.56'	N 87°23'06" E	59.17'
28	150.00'	08°22'56"	21.95'	N 71°49'08" E	21.93'

LIDBERG LAND SURVEYING, INC.
 675 West Indiantown Road, Suite 200,
 Jupiter, Florida 33458 TEL. 561-746-8454

CAD - K:\STATION \ SECTION \ 12-42-42 \ 1940306 \ 1940306_3.DGN			
REF.			
F.L.D.	FB.	PG.	JOB 00-194-306
OFF. PEDRAZA			DATE AUG 2001
CKD. DCL	SHEET 3 OF 3		DWG. 000-194P