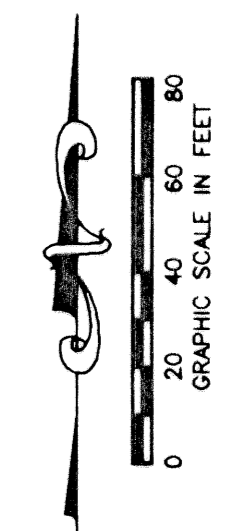


MIRASOL PARCEL ELEVEN

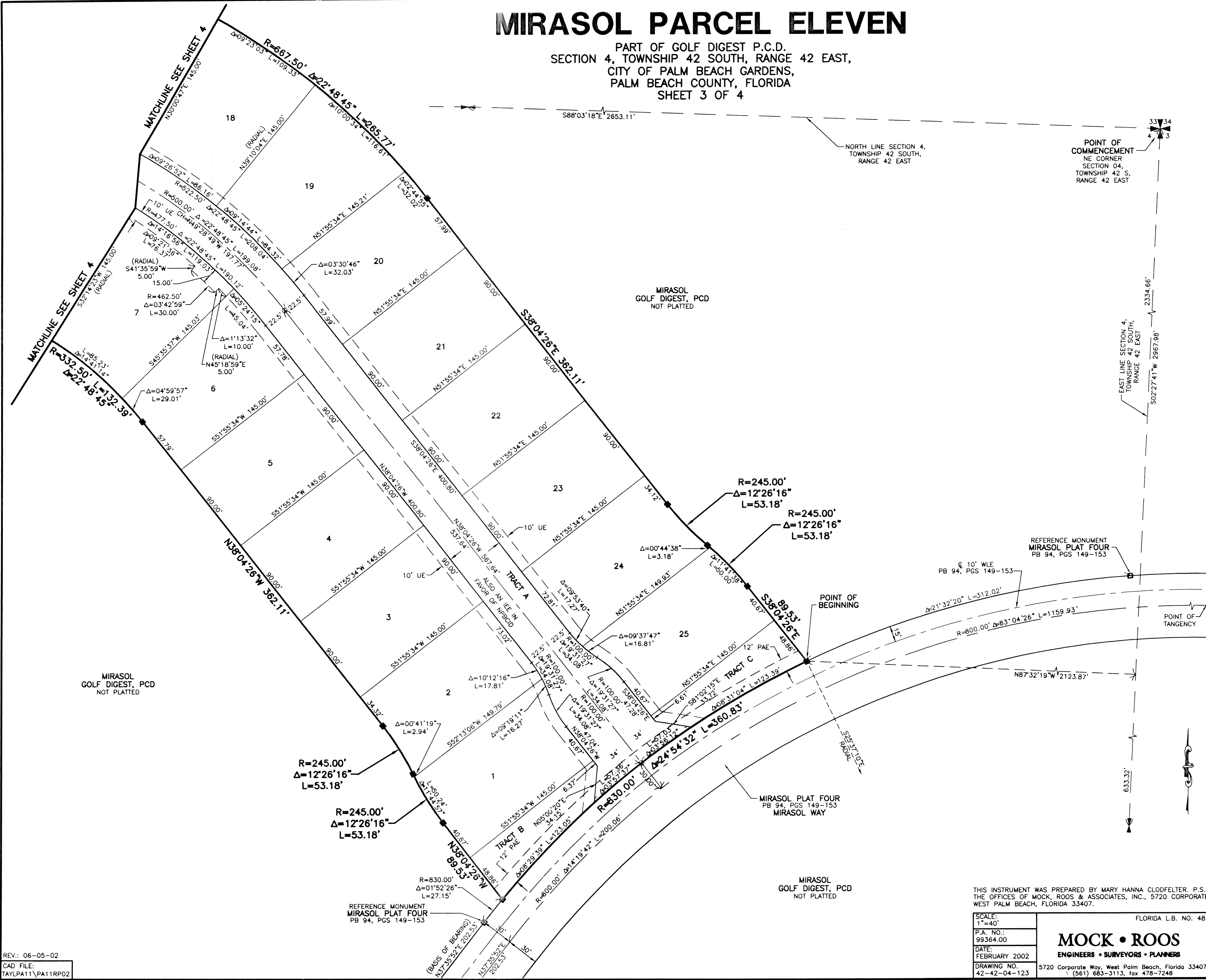
PART OF GOLF DIGEST P.C.D.
SECTION 4, TOWNSHIP 42 SOUTH, RANGE 42 EAST,
CITY OF PALM BEACH GARDENS,
PALM BEACH COUNTY, FLORIDA
SHEET 3 OF 4



STATE OF FLORIDA
COUNTY OF PALM BEACH
THIS INSTRUMENT WAS FILED FOR
RECORD _____ DAY OF _____
AD, 2002 AND DULY RECORDED
IN PLAT BOOK _____ ON PAGES
_____ AND _____

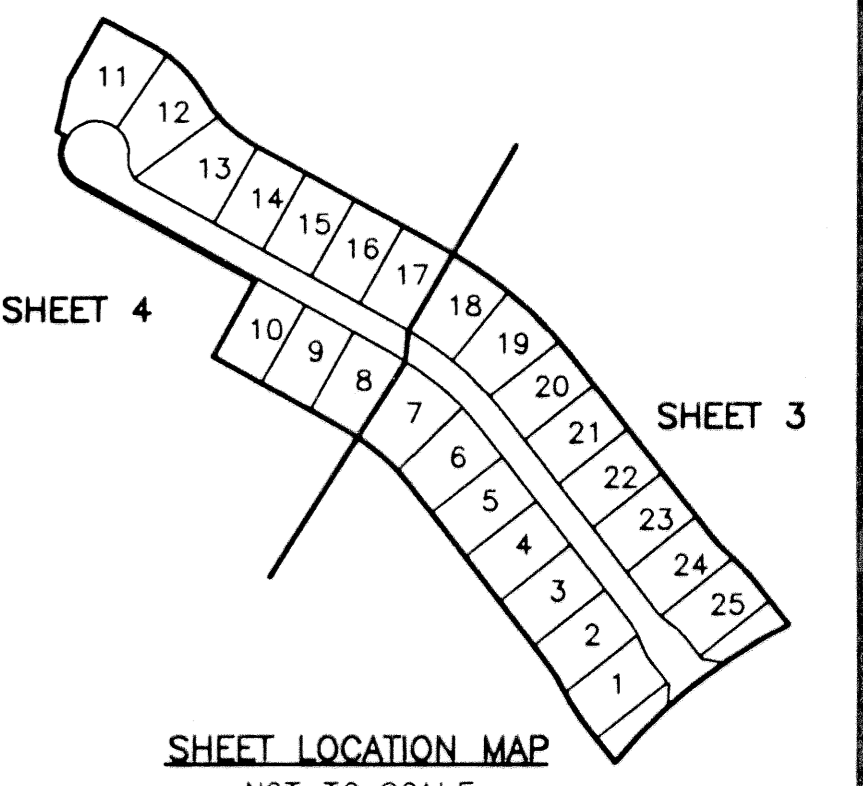
DOROTHY H. WILKEN, CLERK
BY: _____, D.C.

CIRCUIT COURT SEAL



LEGEND

Δ	CENTRAL (DELTA) ANGLE
CH	CHORD
IEE	INGRESS-EGRESS EASEMENT
L	ARC LENGTH
NPBC1D	NORTHERN PALM BEACH COUNTY IMPROVEMENT DISTRICT
ORB	OFFICIAL RECORD BOOK
PAE	PEDESTRIAN ACCESS EASEMENT
PB	PLAT BOOK
PG	PAGE
PCD	PLANNED COMMUNITY DEVELOPMENT
R	RADIUS
UE	UTILITY EASEMENT
WLE	WATER LINE EASEMENT
■	PERMANENT REFERENCE MONUMENT FOUND LB 048 (4" x 4" CONCRETE)
○	PERMANENT REFERENCE MONUMENT SET LB 048 (4" x 4" CONCRETE)
○	PERMANENT CONTROL POINT SET LB 048
⊖	CENTERLINE



THIS INSTRUMENT WAS PREPARED BY MARY HANNA CLODFELTER, P.S.M. IN THE OFFICES OF MOCK, ROOS & ASSOCIATES, INC., 5720 CORPORATE WAY, WEST PALM BEACH, FLORIDA 33407.

SCALE:	1"=40'
P.A. NO.:	99364.00
DATE:	FEBRUARY 2002
DRAWING NO.:	42-42-04-123

FLORIDA L.B. NO. 48

MOCK • ROOS
ENGINEERS • SURVEYORS • PLANNERS

5720 Corporate Way, West Palm Beach, Florida 33407
(561) 683-3113, fax 478-7248

MIRASOL PARCEL ELEVEN
PART OF GOLF DIGEST P.C.D.
SITUATE IN SECTION 4,
TOWNSHIP 42 SOUTH, RANGE 42 EAST,
CITY OF PALM BEACH GARDENS,
PALM BEACH COUNTY, FLORIDA

S:\rev\104011\06011r02.dwg 06/05/02 01:08:31 PM EDT

REV.: 06-05-02
CAD FILE:
TAYLPA11\PA11RPO2