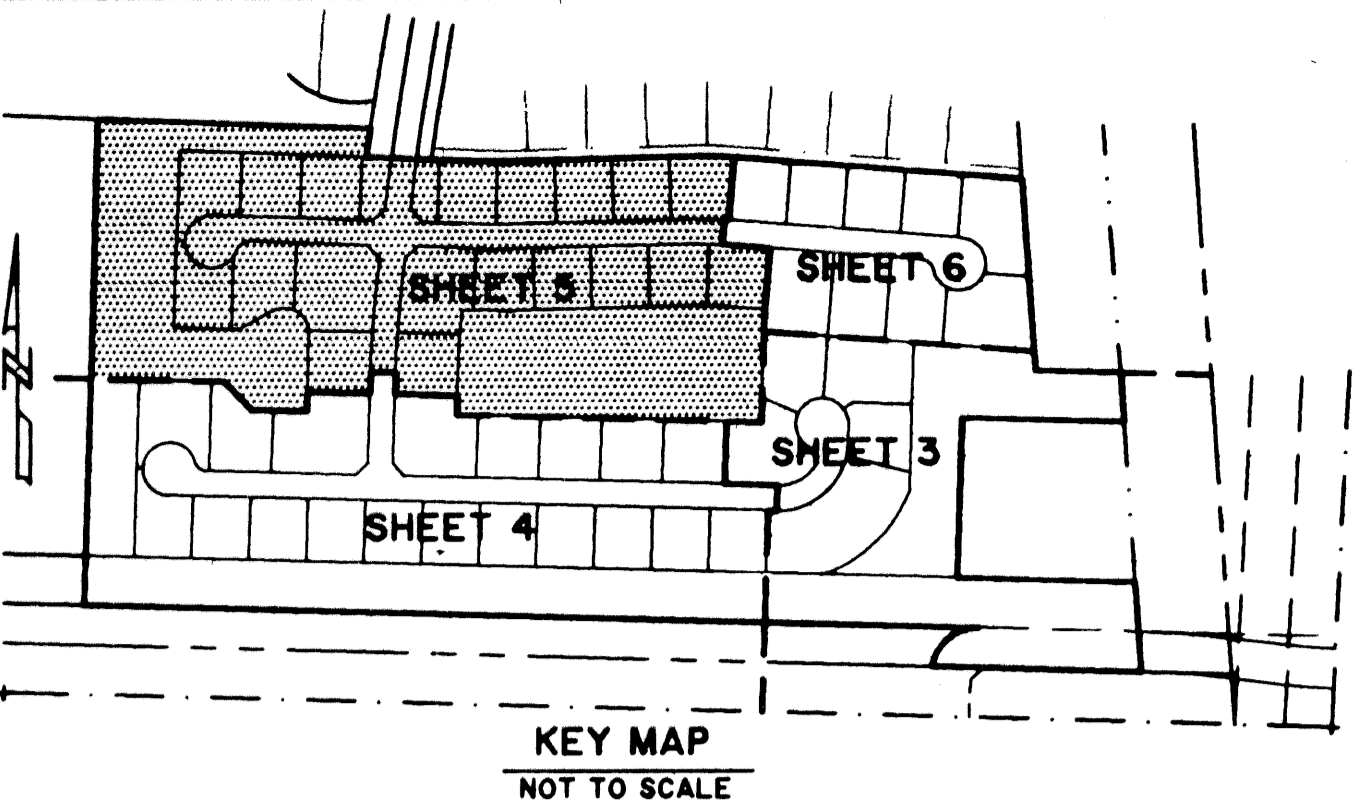
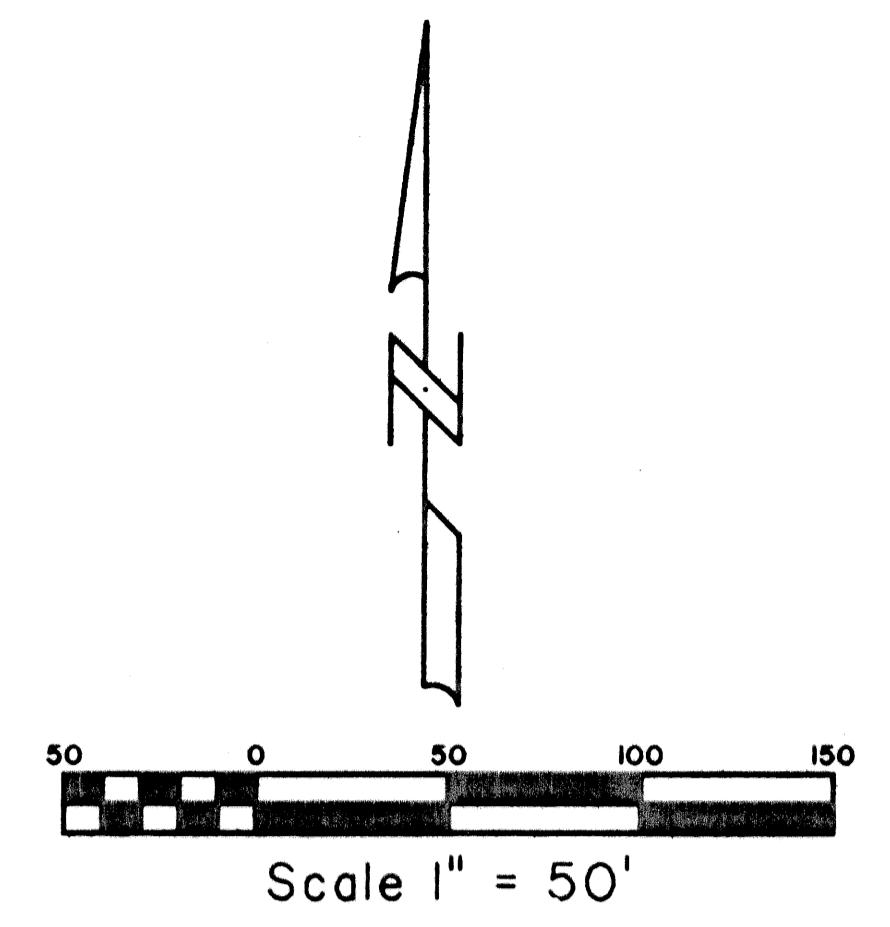


# ISLES AT WELLINGTON PLAT VIII

A PORTION OF THE ORANGE POINT PLANNED UNIT DEVELOPMENT  
LYING IN SECTION 26, TOWNSHIP 44 SOUTH, RANGE 41 EAST,  
VILLAGE OF WELLINGTON, PALM BEACH COUNTY, FLORIDA.  
SHEET 5 OF 6 JANUARY, 2002

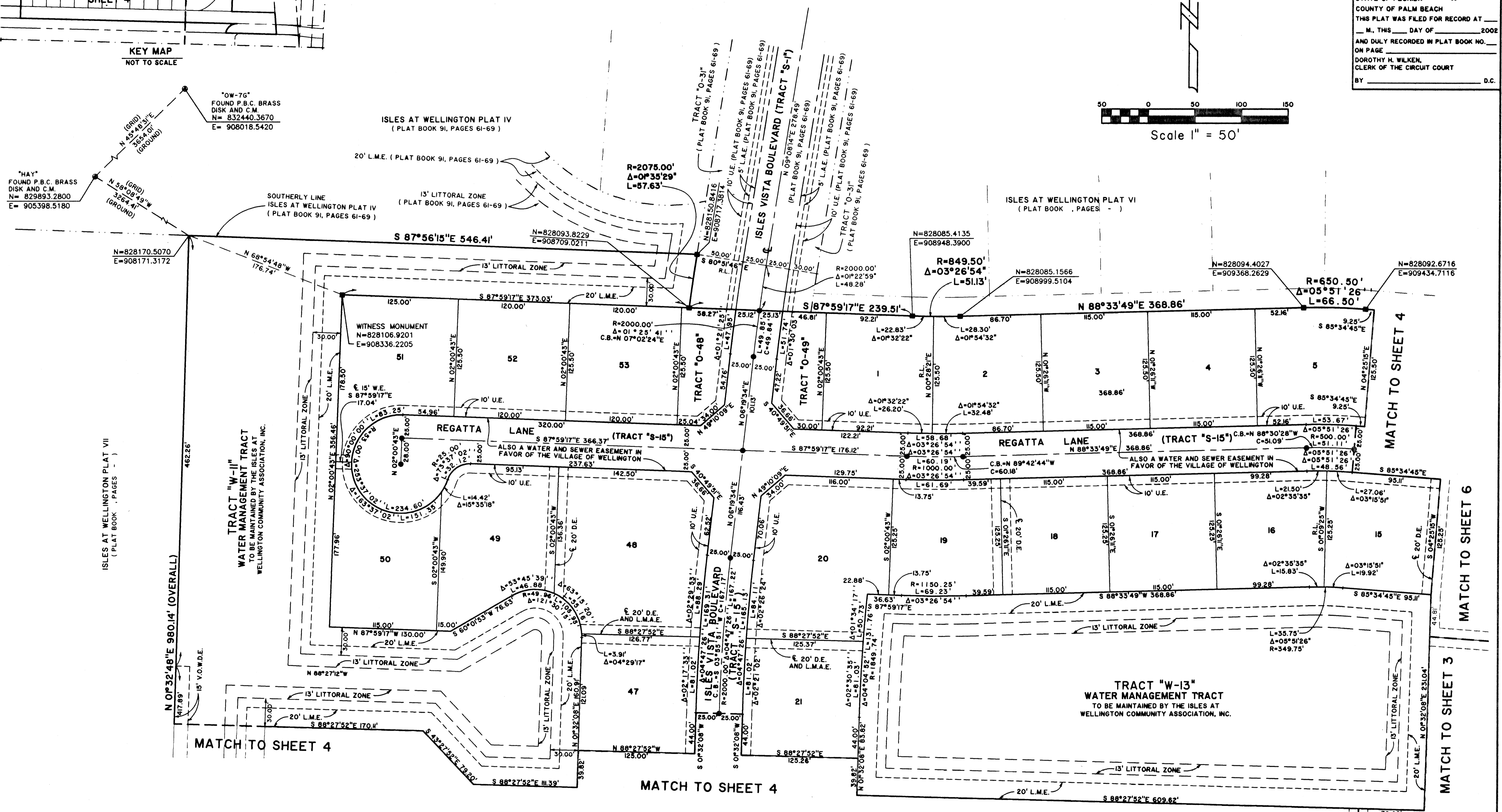


STATE OF FLORIDA SS  
COUNTY OF PALM BEACH  
THIS PLAT WAS FILED FOR RECORD AT \_\_\_\_\_  
M., THIS \_\_\_\_\_ DAY OF \_\_\_\_\_, 2002  
AND DULY RECORDED IN PLAT BOOK NO. \_\_\_\_\_  
ON PAGE \_\_\_\_\_  
DOROTHY H. WILKEN,  
CLERK OF THE CIRCUIT COURT  
BY \_\_\_\_\_ D.C.



"OW-76"  
FOUND P.B.C. BRASS  
DISK AND C.M.  
N= 832440.3670  
E= 908018.5420

"HAY"  
FOUND P.B.C. BRASS  
DISK AND C.M.  
N= 829893.2800  
E= 905398.5180



**COORDINATE NOTE:**  
STATE PLANE COORDINATES SHOWN ARE GRID DATUM, NAD 83 1990  
ADJUSTMENT, FLORIDA EAST ZONE, COORDINATE SYSTEM 1983 STATE  
PLANE, TRANSVERSE MERCATOR PROJECTION  
LINEAR UNIT = US SURVEY FEET  
ALL DISTANCES ARE GROUND  
SCALE FACTOR = 1.0000139  
GROUND DISTANCE X SCALE FACTOR = GRID DISTANCE  
BEARINGS AS SHOWN HEREON ARE GRID DATUM, NAD 83 1990  
ADJUSTMENT, FLORIDA EAST ZONE.

**Landmark Surveying & Mapping Inc.**  
1850 Forest Hill Boulevard  
Ph. (561) 433-5405 Suite 100 W.P.B. Florida  
LB # 4396

**ISLES AT WELLINGTON PLAT VIII**  
(POD "K")