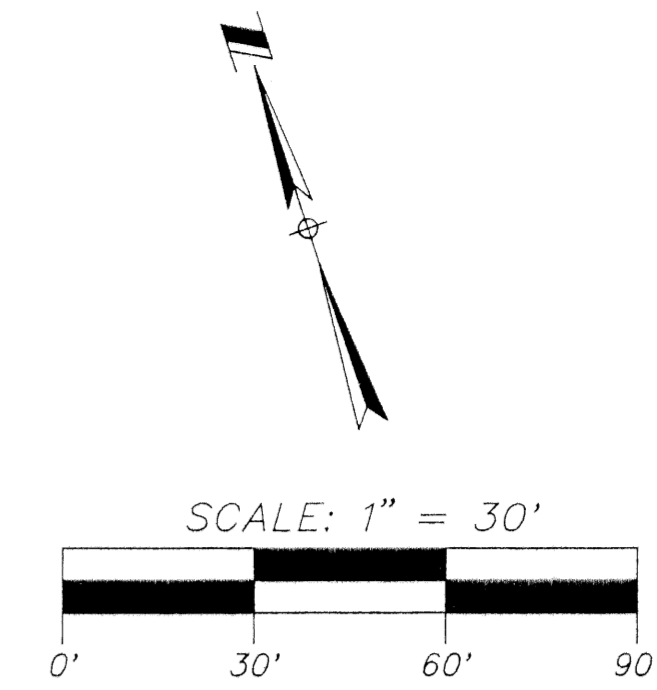


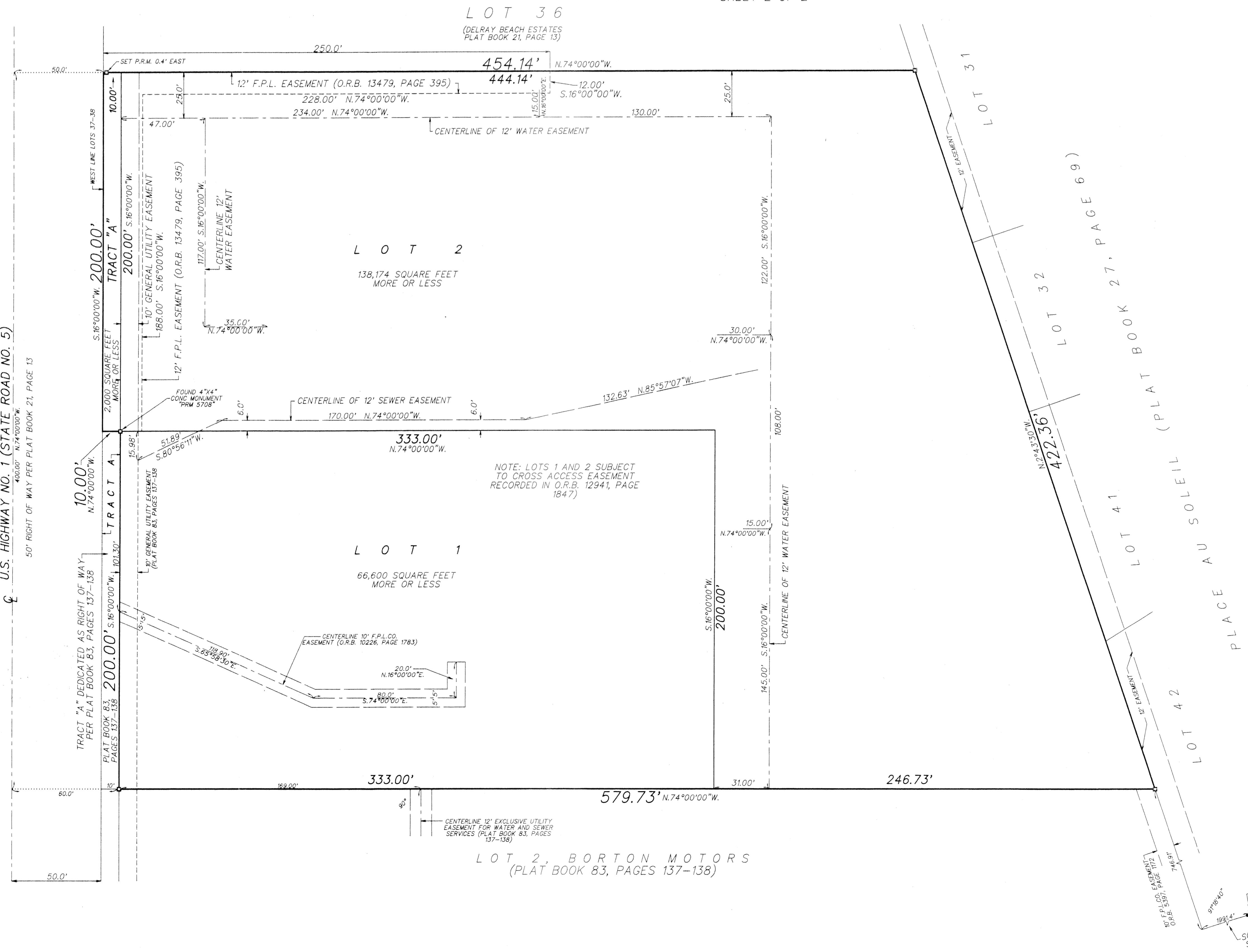
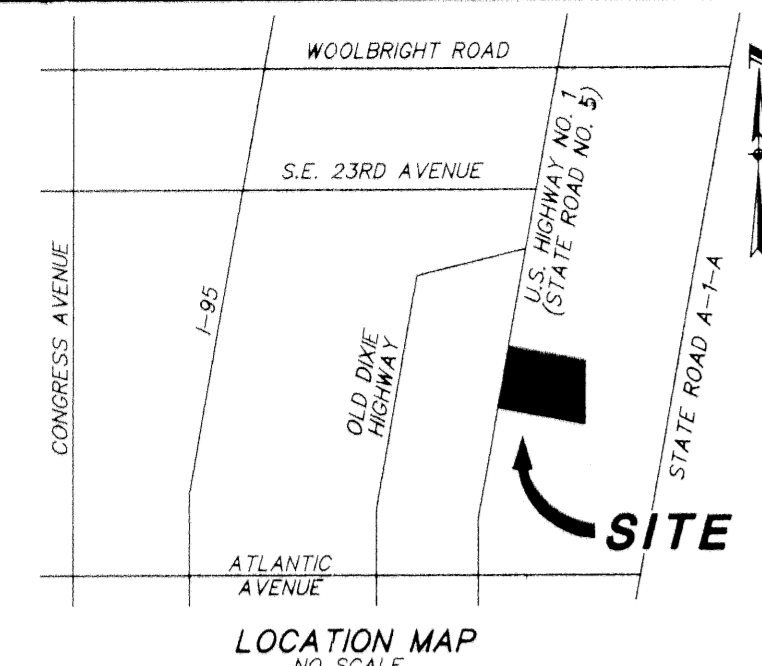
BORTON MOTORS PLAT 2

BEING A REPLAT OF LOTS 37 AND 38, DELRAY BEACH ESTATES, PLAT BOOK 21, PAGE 13, PUBLIC RECORDS OF PALM BEACH COUNTY, FLORIDA AND A REPLAT OF LOT 1, BORTON MOTORS, PLAT BOOK 83, PAGES 137 AND 138, PUBLIC RECORDS OF PALM BEACH COUNTY, FLORIDA BEING IN SECTION 4, TOWNSHIP 46 SOUTH, RANGE 43 EAST, CITY OF DELRAY BEACH, PALM BEACH COUNTY, FLORIDA.

MAY 2001
SHEET 2 OF 2



COUNTY OF PALM BEACH
STATE OF FLORIDA
THIS PLAT WAS FILED FOR RECORD AT _____
THIS _____ DAY OF _____
20____, AND DULY RECORDED IN PLAT BOOK NO. _____
ON PAGE _____
DORTHY H. WILKEN, CLERK OF CIRCUIT COURT
BY _____ D.C.



LEGEND:
C = CENTERLINE OF RIGHT OF WAY
SECTION 4/46/43 = SECTION 4,
TOWNSHIP 46 SOUTH, RANGE 43
EAST
O.R.B. = OFFICIAL RECORD BOOK
THE SOUTH LINE LOT 38, (PLAT BOOK 21,
PAGE 13) IS ASSUMED TO BEAR N.90°00'00"E.
THE SIDE LINES OF ALL EASEMENTS TO BE
EXTENDED OR SHORTENED TO MEET AT ALL
ANGLE POINTS
□ = SET P.R.M. (PERMANENT
REFERENCE MONUMENT
#LB 353) UNLESS NOTED
OTHERWISE

THIS INSTRUMENT WAS PREPARED BY PAUL D. ENGLE, IN THE OFFICE OF O'BRIEN, SUITER & O'BRIEN, INC. 2601 NORTH FEDERAL HIGHWAY, DELRAY BEACH, FLORIDA 33483 (561) 276-4501.

LOT 2, BORTON MOTORS
(PLAT BOOK 83, PAGES 137-138)