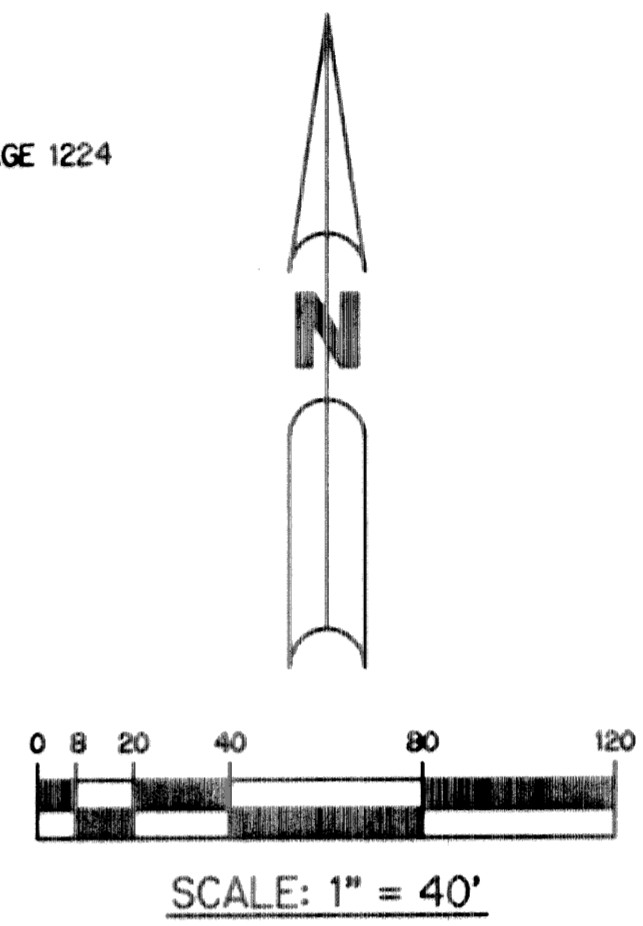
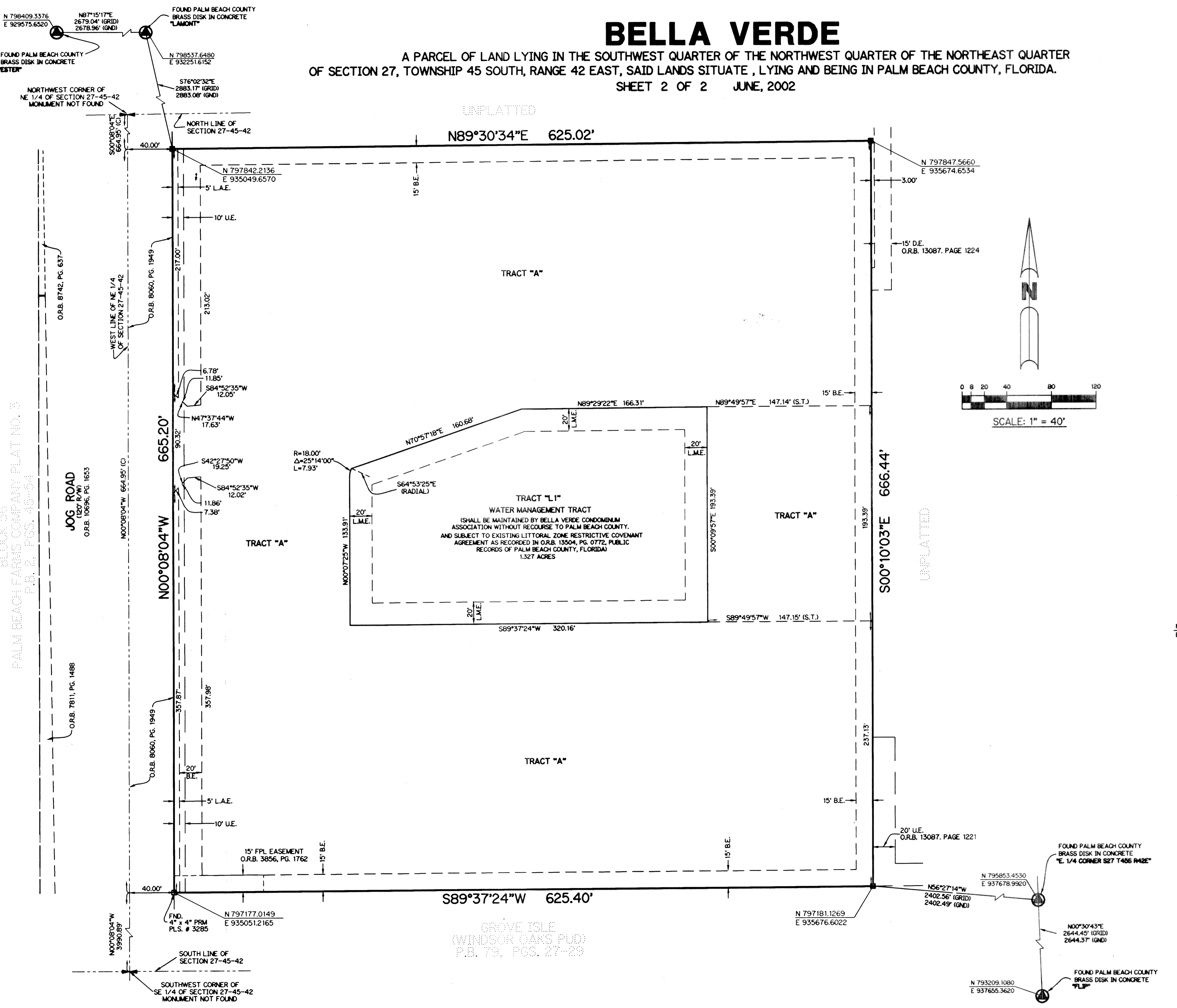


BELLA VERDE

A PARCEL OF LAND LYING IN THE SOUTHWEST QUARTER OF THE NORTHWEST QUARTER OF THE NORTHEAST QUARTER OF SECTION 27, TOWNSHIP 45 SOUTH, RANGE 42 EAST, SAID LANDS SITUATE, LYING AND BEING IN PALM BEACH COUNTY, FLORIDA.

SHEET 2 OF 2 JUNE, 2002



NOTE:

COORDINATES SHOWN ARE GRID COORDINATES
 DATUM = NAD 83 (1990 ADJUSTMENT)
 ZONE = FLORIDA EAST ZONE
 LINEAR UNIT = U.S. SURVEY FEET
 COORDINATE SYSTEM 1983 STATE PLANE
 TRANSVERSE MERCATOR PROJECTION
 ALL DISTANCES ARE GROUND
 SCALE FACTOR = 1.000034481
 NO ROTATION: PLAT BEARING = GRID BEARING

LEGEND:

- - SET PERMANENT REFERENCE MONUMENT (P.R.M.), LB-6674
- B.E. - BUFFER EASEMENT
- C - CENTERLINE
- FND. - FOUND
- D.E. - DRAINAGE EASEMENT
- L.A.E. - LIMITED ACCESS EASEMENT
- NR - NOT RADIAL
- N.T.S. - NOT TO SCALE
- O.R.B. - OFFICIAL RECORD BOOK
- P.B. - PLAT BOOK
- PGS. - PAGES
- P.S.M. - PROFESSIONAL SURVEYOR AND MAPPER
- R/W - RIGHT-OF-WAY
- S.T. - SURVEY TIE
- U.E. - UTILITY EASEMENT
- L.M.E. - LAKE MAINTENANCE EASEMENT

N 814602.8657 / E 785753.1680 - DENOTES STATE PLANE COORDINATES

THIS INSTRUMENT PREPARED BY
 WILBUR F. DIVINE, P.S.M. 4190, STATE OF FLORIDA
 LAWSON, NOBLE AND WEBB, INC., LB-6674
 ENGINEERS PLANNERS SURVEYORS
 420 COLUMBIA DRIVE, SUITE 110
 WEST PALM BEACH, FLORIDA

KEY MAP
 NOT TO SCALE

