

TOWNE PARK TRACT G

A PLANNED UNIT DEVELOPMENT BEING A PART OF TOWNE PARK PUD
 BEING A REPLAT OF A PORTION OF BLOCKS 36 AND 43
 "PALM BEACH FARMS COMPANY PLAT NO. 3, AS RECORDED IN PLAT BOOK 2, PAGES 45 THROUGH 54 OF THE PUBLIC RECORDS OF PALM BEACH COUNTY, FLORIDA, LYING IN SECTIONS 6 AND 7, TOWNSHIP 45 SOUTH, RANGE 42 EAST, PALM BEACH COUNTY, FLORIDA

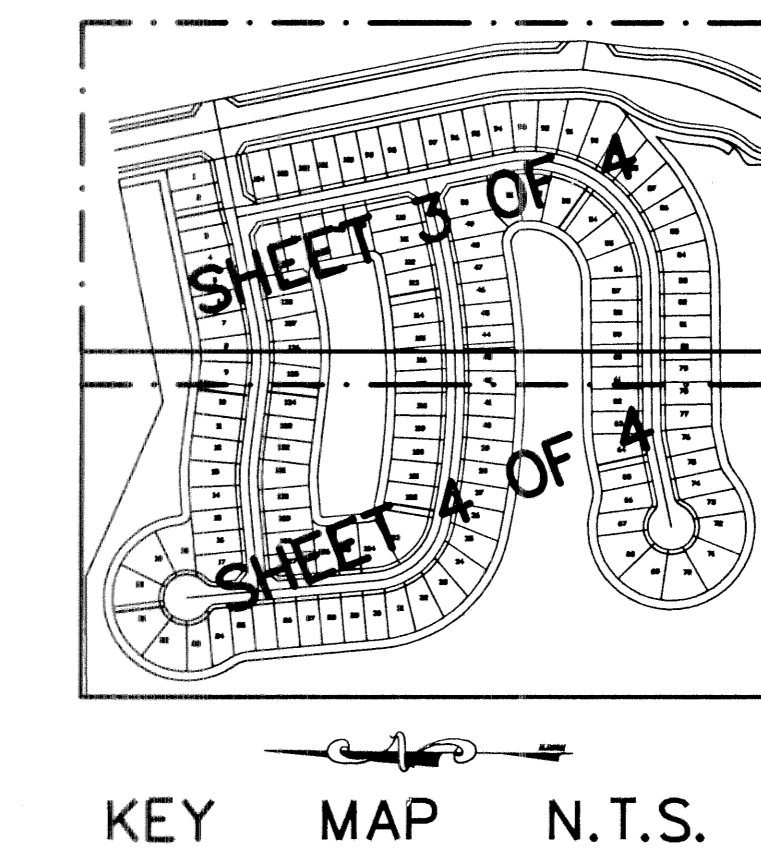
THIS INSTRUMENT PREPARED BY
 DAVID P. LINDLEY
 OF
CAULFIELD AND WHEELER, INC.
 SURVEYORS - ENGINEERS - PLANNERS
 7301-A WEST PALMETTO PARK ROAD, SUITE 100A
 BOCA RATON, FLORIDA 33433 - (561)392-1991
 JANUARY - 2002

NOTES COORDINATES, BEARINGS AND DISTANCES

COORDINATES SHOWN ARE GRID
 DATUM = NAD 83 1990 ADJUSTMENT
 ZONE = FLORIDA EAST
 LINEAR UNIT = US SURVEY FEET
 COORDINATE SYSTEM 1983 STATE PLANE
 TRANSVERSE MERCATOR PROJECTION
 ALL DISTANCES ARE GROUND
 SCALE FACTOR = 1.0000195
 GROUND DISTANCE X SCALE FACTOR = GRID DISTANCE
 BEARINGS AS SHOWN HEREON ARE GRID BEARING, NAD 83 1990
 ADJUSTMENT, FLORIDA EAST ZONE.

S00°24'03"E (PLAT BEARING) 00°24'17" = BEARING ROTATION
 S00°48'20"E (GRID BEARING) (PLAT TO GRID)
 WEST LINE THIS PLAT COUNTERCLOCKWISE

CURVE NO.	CHORD BEARING	CHORD DISTANCE
C1	S38°54'32"W	423.35'
C2	S89°27'27"W	642.12'
C3	N41°45'23"W	196.26'
C4	S87°40'05"W	126.36'
C5	S83°38'34"W	39.00'
C6	N89°23'19"W	85.64'



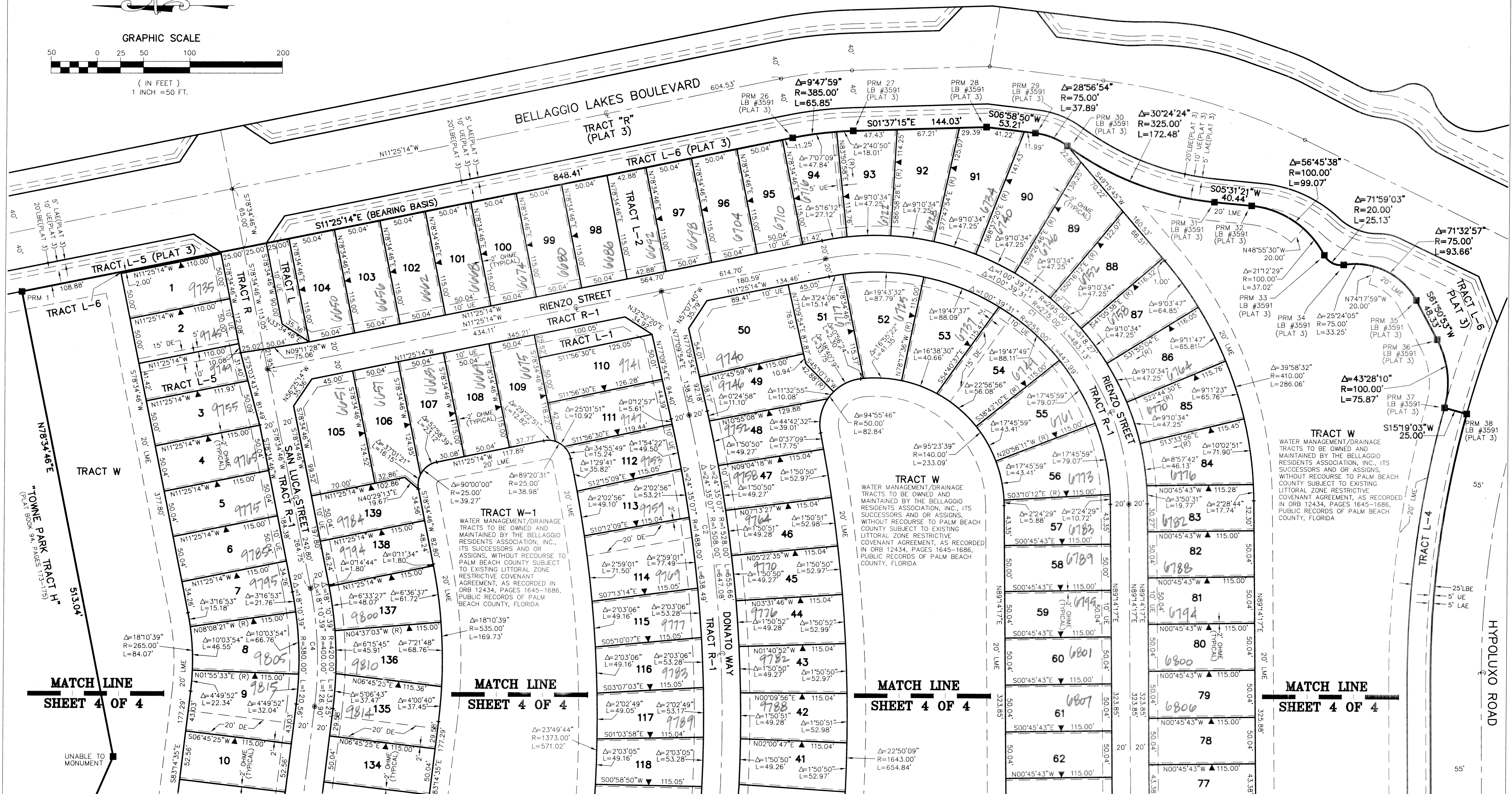
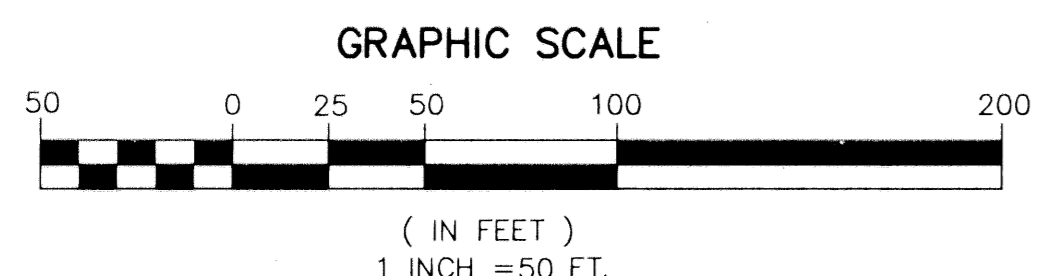
183

STATE OF FLORIDA
 COUNTY OF PALM BEACH
 THIS PLAT WAS FILED FOR
 RECORD AT _____ M.
 THIS _____ DAY OF _____
 A.D. 2002 AND DULY RECORDED
 IN PLAT BOOK _____ ON
 PAGES _____ AND _____

DOROTHY H. WILKEN
 CLERK CIRCUIT COURT

By: _____
 DEPUTY CLERK

SHEET 3 OF 4



TRACT W
 WATER MANAGEMENT/DRAINAGE TRACTS TO BE OWNED AND MAINTAINED BY THE BELLAGGIO RESIDENTS ASSOCIATION, INC., ITS SUCCESSORS AND OR ASSIGNS, WITHOUT RECOURSE TO PALM BEACH COUNTY SUBJECT TO EXISTING LITTORAL ZONE RESTRICTIVE COVENANT AGREEMENT, AS RECORDED IN ORB 12434, PAGES 1645-1686, PUBLIC RECORDS OF PALM BEACH COUNTY, FLORIDA

TRACT W
 WATER MANAGEMENT/DRAINAGE TRACTS TO BE OWNED AND MAINTAINED BY THE BELLAGGIO RESIDENTS ASSOCIATION, INC., ITS SUCCESSORS AND OR ASSIGNS, WITHOUT RECOURSE TO PALM BEACH COUNTY SUBJECT TO EXISTING LITTORAL ZONE RESTRICTIVE COVENANT AGREEMENT, AS RECORDED IN ORB 12434, PAGES 1645-1686, PUBLIC RECORDS OF PALM BEACH COUNTY, FLORIDA

TRACT W-1
 WATER MANAGEMENT/DRAINAGE TRACTS TO BE OWNED AND MAINTAINED BY THE BELLAGGIO RESIDENTS ASSOCIATION, INC., ITS SUCCESSORS AND OR ASSIGNS, WITHOUT RECOURSE TO PALM BEACH COUNTY SUBJECT TO EXISTING LITTORAL ZONE RESTRICTIVE COVENANT AGREEMENT, AS RECORDED IN ORB 12434, PAGES 1645-1686, PUBLIC RECORDS OF PALM BEACH COUNTY, FLORIDA

SUBDIVISION TOWNE PARK TR G
 BOOK 95 PAGE 183
 FLOOD ZONE B
 QUAD # 49
 SE
 TAZ 741
 PUD NAME TOWNE PARK

MATCH LINE
SHEET 4 OF 4

MATCH LINE
SHEET 4 OF 4

MATCH LINE
SHEET 4 OF 4

MATCH LINE
SHEET 4 OF 4

UNABLE TO MONUMENT

HYPOLUXO ROAD