

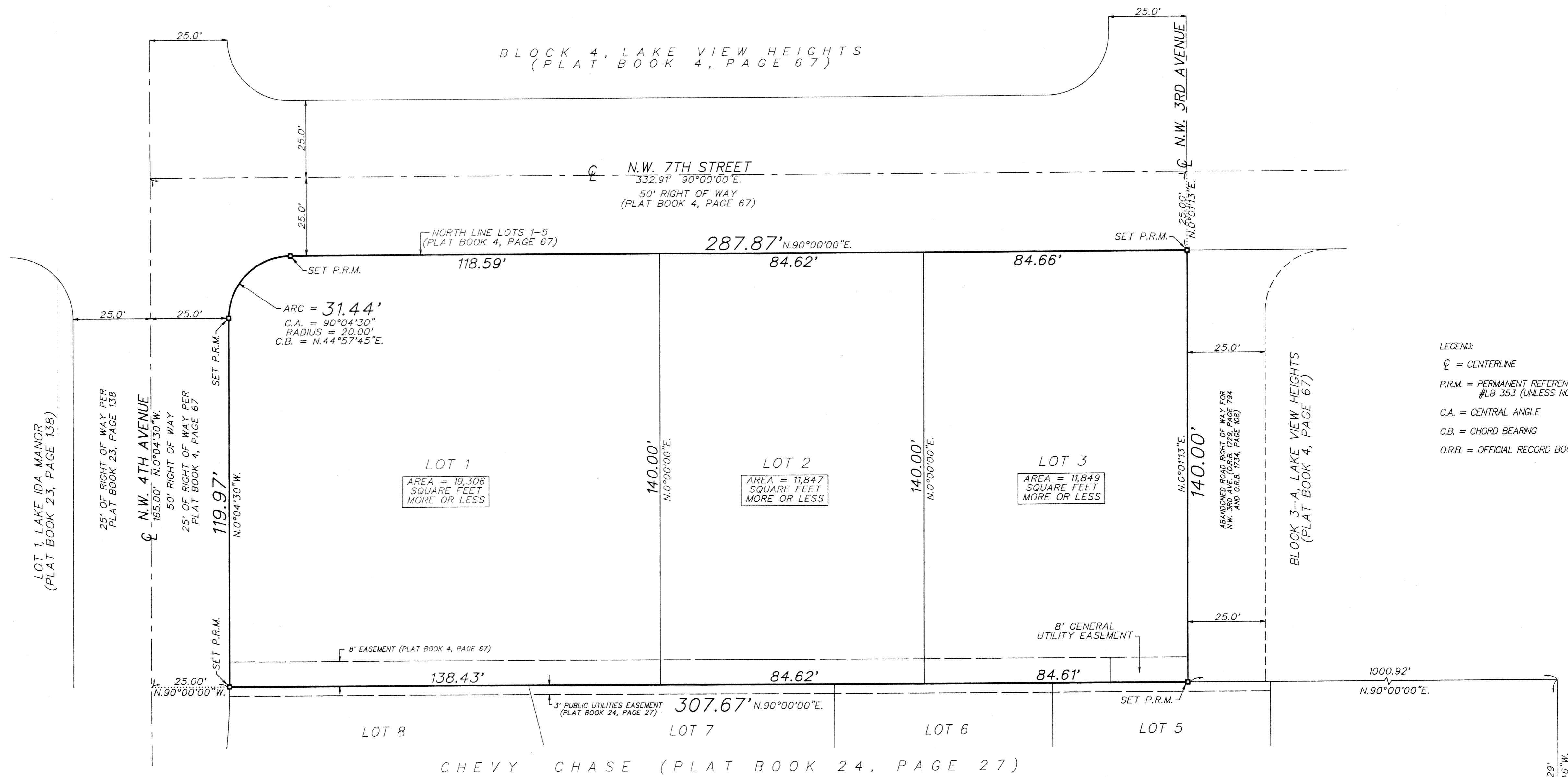
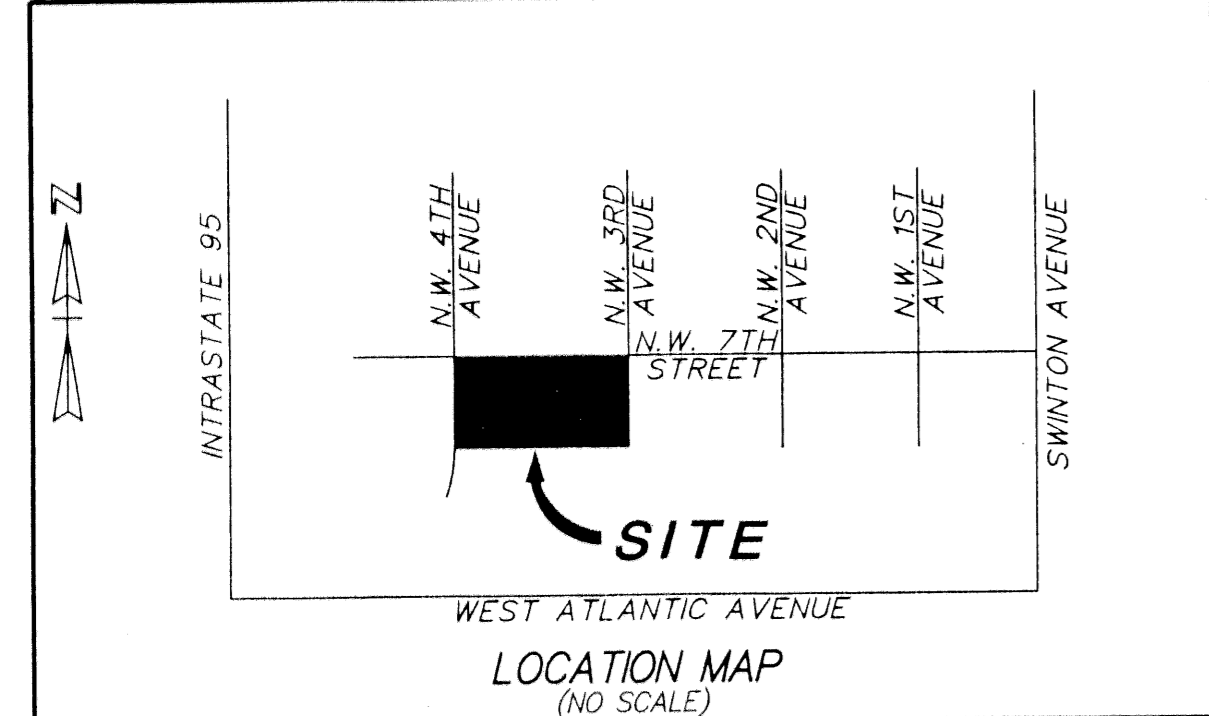
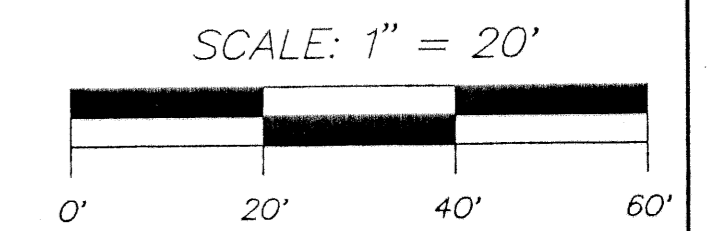
CRUZAN CORNER

BEING A REPLAT OF LOTS 1, 2, 3, 4 AND 5, BLOCK 4-A AND A PORTION OF THE ABANDONED N.W. 3RD AVENUE ROAD RIGHT OF WAY LYING EAST OF AND ADJACENT TO SAID BLOCK 4-A, LAKE VIEW HEIGHTS, PLAT BOOK 4, PAGE 67, SECTION 8, TOWNSHIP 46 SOUTH, RANGE 43 EAST, CITY OF DELRAY BEACH, PALM BEACH COUNTY, FLORIDA

MAY 2002
SHEET 2 OF 2

197

COUNTY OF PALM BEACH
STATE OF FLORIDA
THIS PLAT WAS FILED FOR RECORD AT _____
THIS _____ DAY OF _____
20____ AND DULY RECORDED IN PLAT BOOK NO. _____
ON PAGE _____
DOROTHY H. WILKEN, CLERK OF CIRCUIT COURT
BY _____ D.C.



- LEGEND:
- ℄ = CENTERLINE
 - P.R.M. = PERMANENT REFERENCE MONUMENT #LB 353 (UNLESS NOTED OTHERWISE)
 - C.A. = CENTRAL ANGLE
 - C.B. = CHORD BEARING
 - O.R.B. = OFFICIAL RECORD BOOK

SOUTHEAST CORNER
SECTION 8, TOWNSHIP
46 SOUTH, RANGE
43 EAST