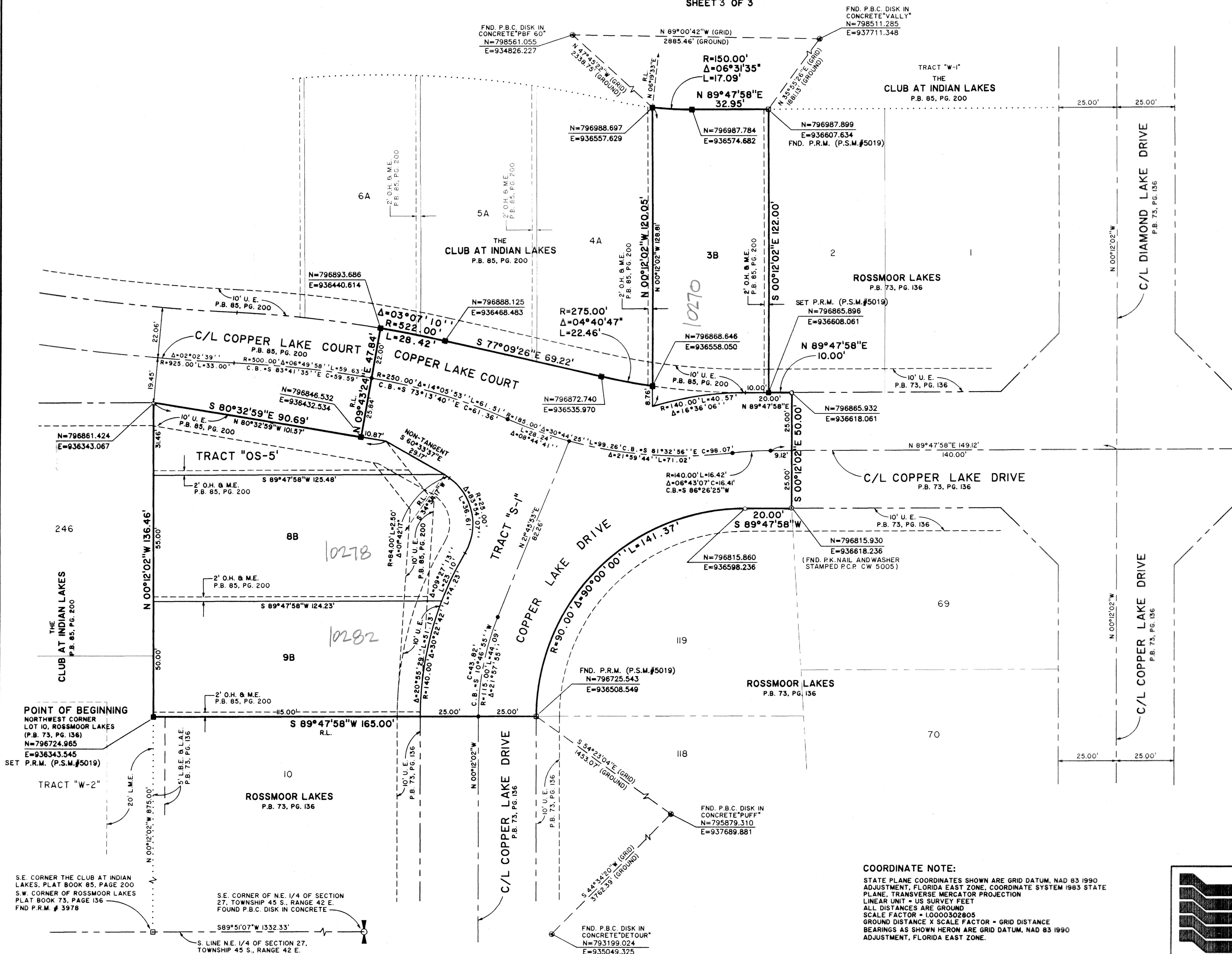
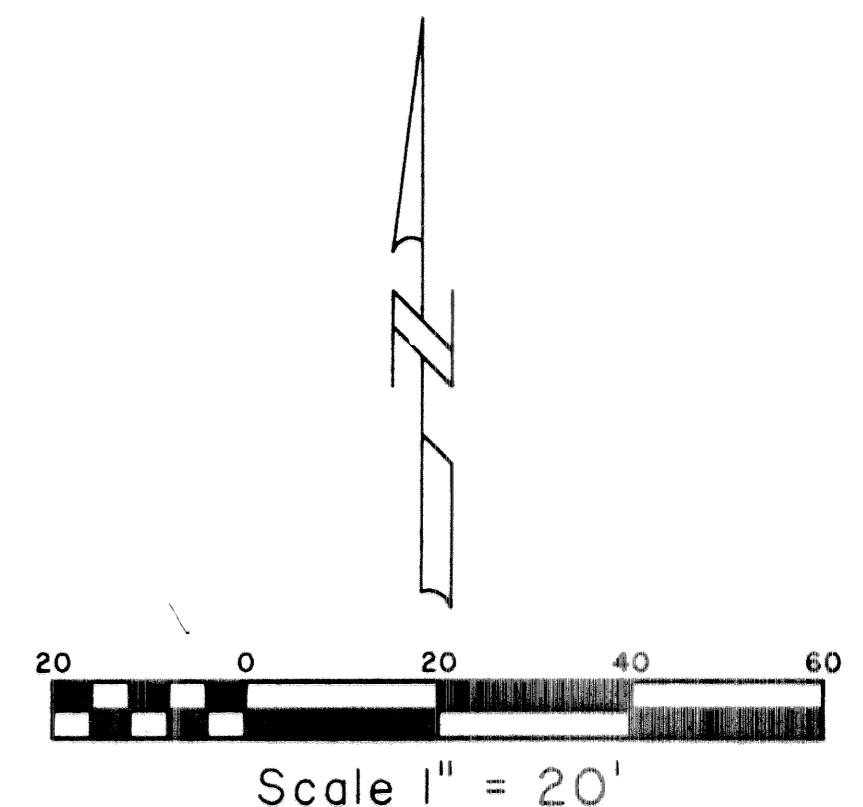


CLUB AT INDIAN LAKES REPLAT

BEING A REPLAT OF A PORTION OF ROSSMOOR LAKES AS RECORDED IN PLAT BOOK 73, PAGES 136 THROUGH 141 AND A PORTION OF THE CLUB AT INDIAN LAKES AS RECORDED IN PLAT BOOK 85, PAGES 200 THROUGH 203, PUBLIC RECORDS OF PALM BEACH COUNTY, FLORIDA AND LYING IN AND BEING A PORTION OF SECTION 27, TOWNSHIP 45 SOUTH, RANGE 42 EAST, PALM BEACH COUNTY, FLORIDA.
SHEET 3 OF 3

STATE OF FLORIDA SS
COUNTY OF PALM BEACH
THIS PLAT WAS FILED FOR RECORD AT _____
M. THIS _____ DAY OF _____ 2002
AND DULY RECORDED IN PLAT BOOK NO. _____
ON PAGE _____
DOROTHY H. WILKEN,
CLERK OF THE CIRCUIT COURT
BY _____ D.C.

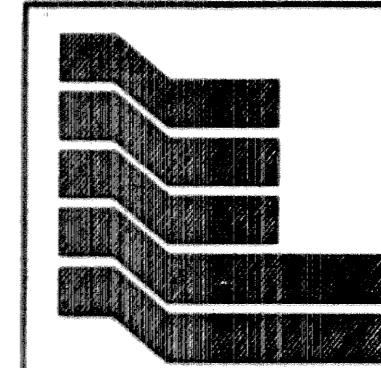


LEGEND

- P.C.P. = PERMANENT CONTROL POINT
- P.R.M. = PERMANENT REFERENCE MONUMENT
- C.M. = CONCRETE MONUMENT
- O.R.B. = OFFICIAL RECORD BOOK
- PG. = PAGE
- P.B. = PLAT BOOK
- TWP. = TOWNSHIP
- RGE. = RANGE
- C/L = CENTERLINE
- U.E. = UTILITY EASEMENT
- R. = RADIUS
- L. = ARC LENGTH
- Δ = CURVE CENTRAL ANGLE
- C.B. = CHORD BEARING
- C. = CHORD LENGTH
- ⊙ = DENOTES FOUND PALM BEACH COUNTY DISK IN CONCRETE
- = DENOTES SET P.C.P. PSM 5019
- = DENOTES SET P.R.M. PSM 5019
- = DENOTES P.R.M. FOUND (AS NOTED)
- L.B.E. = LANDSCAPE BUFFER EASEMENT
- O.H. & M.E. = OVERHANG AND MAINTENANCE EASEMENT
- P.B.C. = PALM BEACH COUNTY
- R.L. = RADIAL LINE
- FND. = FOUND
- P.S.M. = PROFESSIONAL SURVEYOR & MAPPER
- = P.K.NAIL AND WASHER STAMPED PRR.M.# 5019

COORDINATE NOTE:

STATE PLANE COORDINATES SHOWN ARE GRID DATUM, NAD 83 1990 ADJUSTMENT, FLORIDA EAST ZONE, COORDINATE SYSTEM 1983 STATE PLANE, TRANSVERSE MERCATOR PROJECTION
LINEAR UNIT = US SURVEY FEET
ALL DISTANCES ARE GROUND
SCALE FACTOR = 1.0000302805
GROUND DISTANCE X SCALE FACTOR = GRID DISTANCE
BEARINGS AS SHOWN HERON ARE GRID DATUM, NAD 83 1990 ADJUSTMENT, FLORIDA EAST ZONE.



Landmark Surveying & Mapping Inc.
1850 Forest Hill Boulevard Suite 100
(561) 433-5405 West Palm Beach, Florida 33406
LB # 4396

CLUB AT INDIAN LAKES REPLAT

SUBDIVISION CLUB AT INDIAN LAKE REPLAT
BOOK 90 PAGE 3 FLOOD MAP # 185A
FLOOD ZONE 8 ZONING PUD
QUAD # 95
SR
TAZ 952
PUD NAME ROSSMOOR LAKES

POINT OF BEGINNING
NORTHWEST CORNER
LOT 10, ROSSMOOR LAKES
(P.B. 73, PG. 136)
N=796724.965
E=936343.545
SET P.R.M. (P.S.M.#5019)

S.E. CORNER THE CLUB AT INDIAN LAKES, PLAT BOOK 85, PAGE 200
S.W. CORNER OF ROSSMOOR LAKES
PLAT BOOK 73, PAGE 136
FND P.R.M. # 3978

S.E. CORNER OF N.E. 1/4 OF SECTION 27, TOWNSHIP 45 S., RANGE 42 E.
FOUND P.B.C. DISK IN CONCRETE

S. LINE N.E. 1/4 OF SECTION 27, TOWNSHIP 45 S., RANGE 42 E.
589°51'07"W 1332.33'

FND. P.B.C. DISK IN CONCRETE "DETOUR"
N=793199.024
E=935049.325

FND. P.B.C. DISK IN CONCRETE "PUFF"
N=795879.310
E=937689.881

FND. P.R.M. (P.S.M.#5019)
N=796725.543
E=936508.549

(FND. P.K. NAIL AND WASHER STAMPED P.C.P. CW 5005)
N=796815.860
E=936598.236

N=796865.932
E=936618.061

SET P.R.M. (P.S.M.#5019)
N=796865.896
E=936608.061

FND. P.R.M. (P.S.M.#5019)
N=796987.899
E=936607.634

N=796987.784
E=936574.682

N=796988.697
E=936557.629

N=796893.686
E=936440.614

N=796888.125
E=936468.483

N=796872.740
E=936535.970

N=796846.532
E=936432.534

N=796861.424
E=936343.067