

"ST. HERMAN ORTHODOX CHURCH"

A REPLAT OF A PORTION OF TRACT 1 OF "AMENDED PLAT OF SEC. 12, TWP. 45 S. R. 42 E.", P.B. 9, PAGE 74
SECTION 12, TOWNSHIP 45 SOUTH, RANGE 42 EAST
PALM BEACH COUNTY-FLORIDA

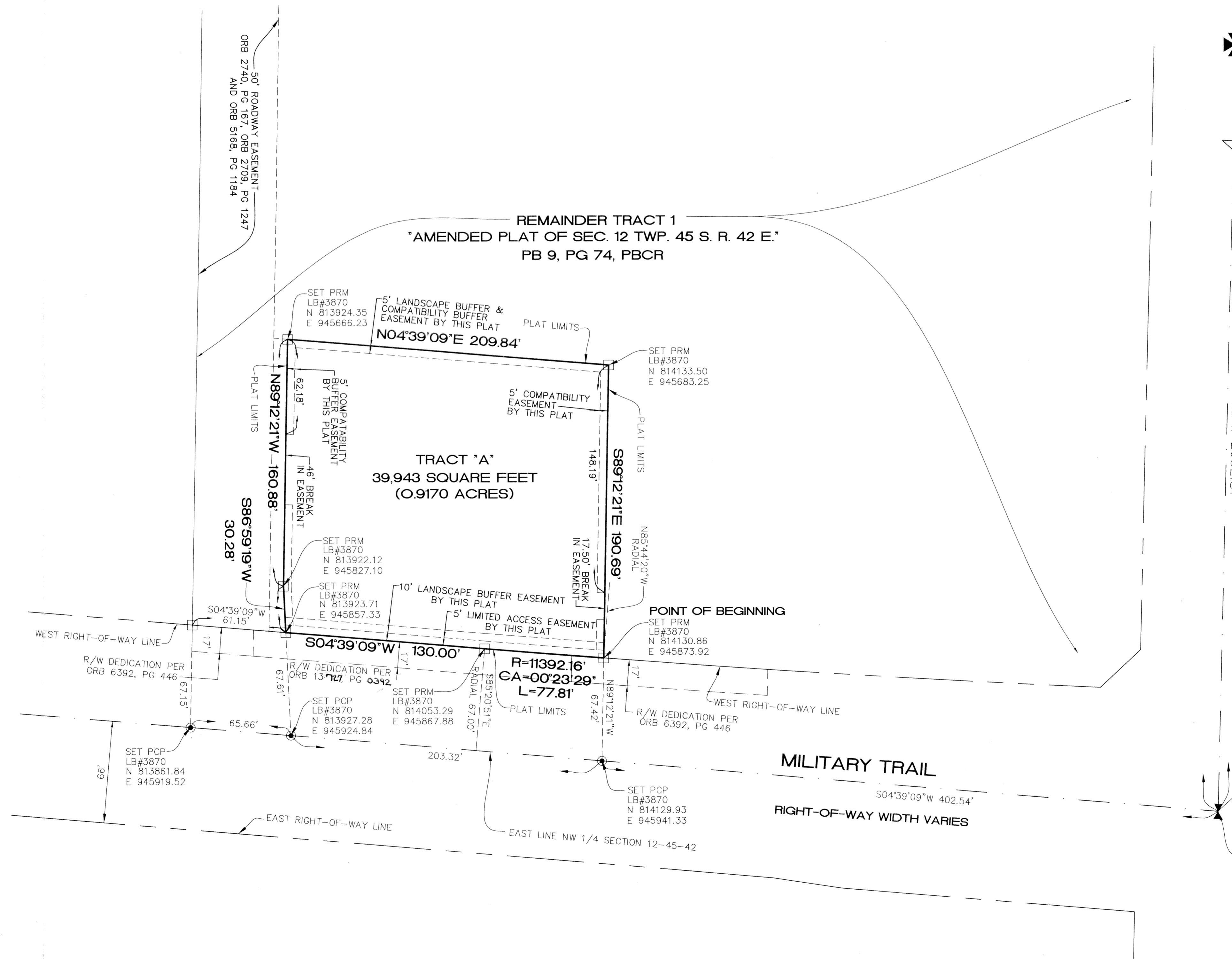
SHEET 2 OF 2 SHEETS

PREPARED BY
PULICE LAND SURVEYORS, INC.

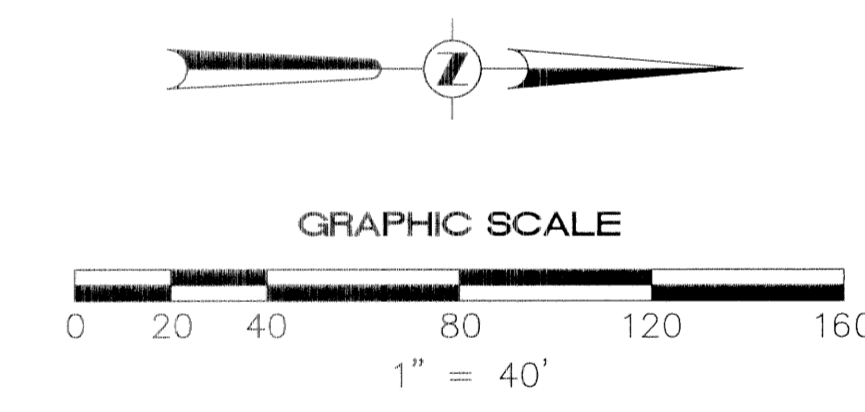
CERTIFICATE OF AUTHORIZATION LB3870
5381 NOB HILL ROAD
SUNRISE, FLORIDA 33351
(954) 572-1777
FAX (954) 572-1778
AUGUST 2001

STATE OF FLORIDA
COUNTY OF PALM BEACH
THIS PLAT WAS FILED FOR RECORD AT _____ M.,
THIS _____ DAY OF _____, AND
DULY RECORDED IN PLAT BOOK NUMBER _____,
AT PAGE _____.
DOROTHY H. WILKEN
CLERK OF THE CIRCUIT COURT

BY: _____
DEPUTY CLERK



FOUND BRASS DISK IN CONC.
NW CORNER SECTION 12-45-42
(PER PALM BEACH COUNTY)
N 814584.85
E 943321.72



POINT OF COMMENCEMENT
NORTH 1/4 CORNER SECTION 12-45-42
FOUND BRASS DISK IN CONCRETE
BENCHMARK ELEVATION: 19.70'
N 814531.13
E 945973.98

SUBDIVISION ST HERMAN ORTHODOX CHURCH
BOOK 90
PAGE 28
FLOOD MAP # 190 B
ZONING CC
QUAD # 34
SE
TAZ 432
FUD NAME