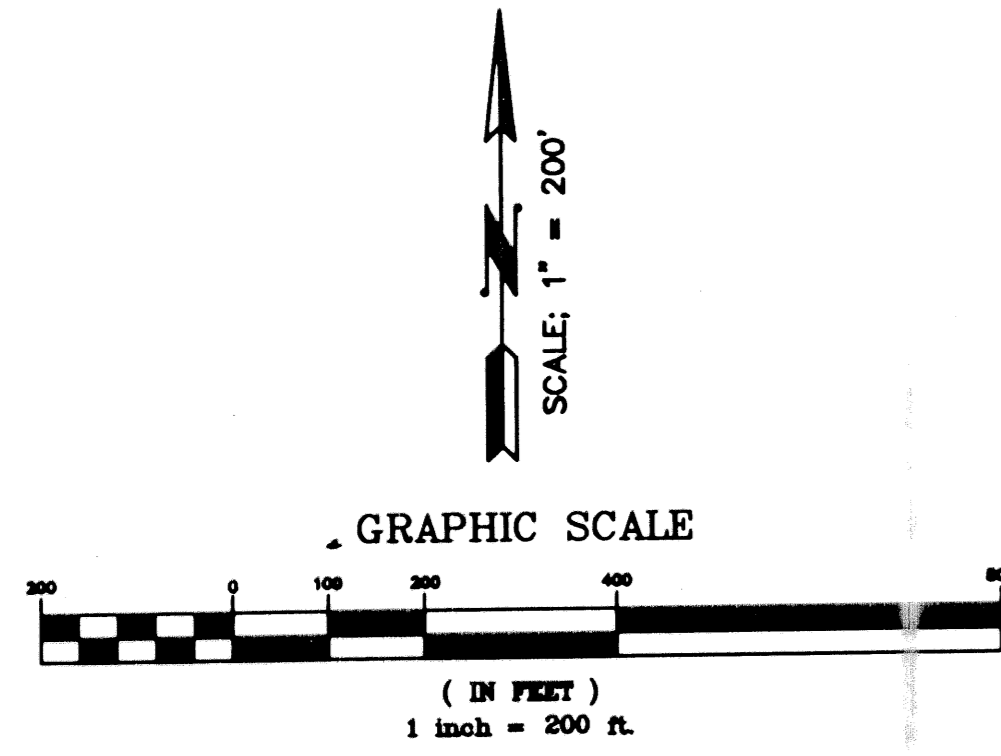


OLD PALM PLAT 1

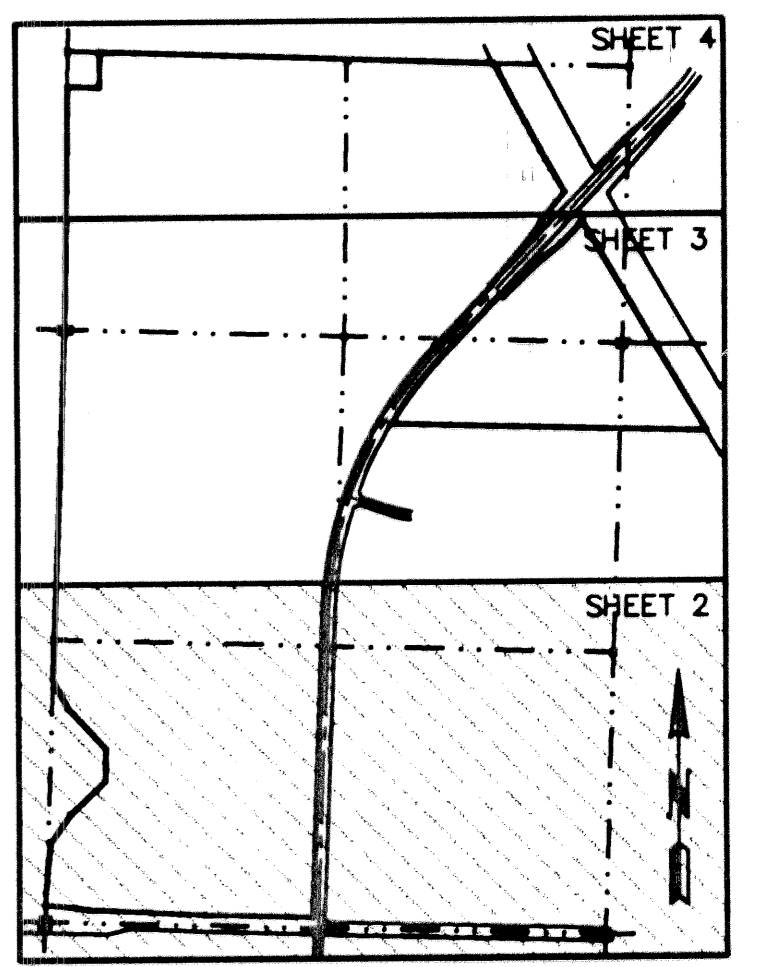
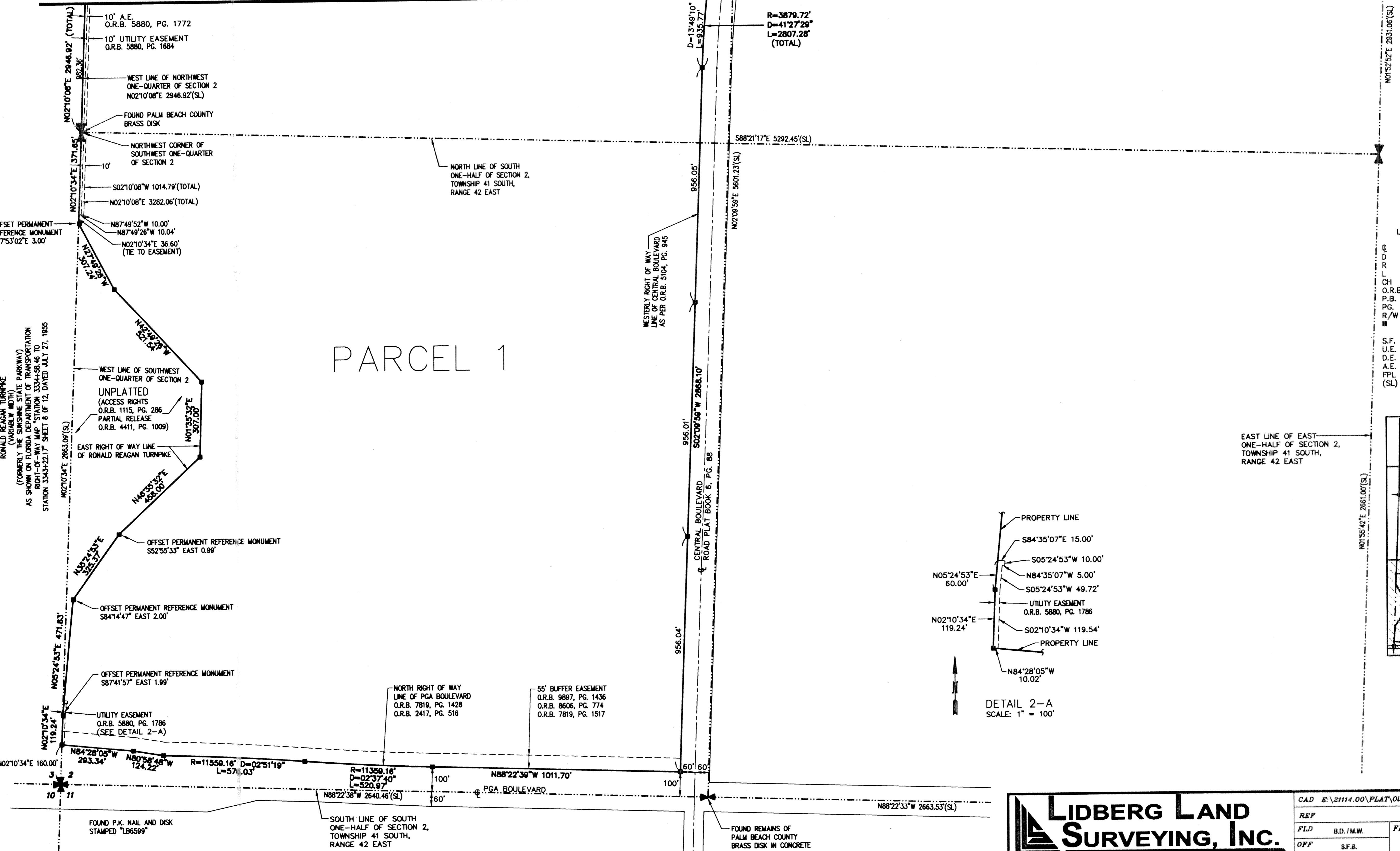
LYING IN SECTIONS 35 AND 36, TOWNSHIP 41 SOUTH, RANGE 42 EAST
AND SECTIONS 1 AND 2, TOWNSHIP 42 SOUTH, RANGE 42 EAST
CITY OF PALM BEACH GARDENS, PALM BEACH COUNTY, FLORIDA
SHEET NO. 2 OF 4

AUGUST 2002

STATE OF FLORIDA
COUNTY OF PALM BEACH
This plat was filed for
record at _____ M. this _____ day
of _____ 2002, and duly
recorded in Plat Book No. _____
on Pages _____ thru _____
DOROTHY H. WILKEN
Clerk Circuit Court
By _____ D. C.



MATCHLINE (SEE SHEET 3)



H:\21114.00\PLAT\OldPalm-Plat-1\P31-Sh2.dwg Plot Date: 8/26/2002 11:17 am By: Jkavis Plot Scale: 1=200.0 Xref Dwg's: X-P31PLAT.

LIDBERG LAND SURVEYING, Inc.
LB 4431 675 West Indian Town Road, Suite 200, Jupiter, Florida 33458 TEL 561-748-8454

CAD E:\21114.00\PLAT\OldPalm-Plat-1\P31-Sh2.DWG			
REF			
FLD	B.D./M.W.	FB.	PC.
OFF	S.F.B.		
CKD	D.C.L.	SHEET 2 OF 4	DWG
			JOB 21-114.00
			DATE 08/08/02