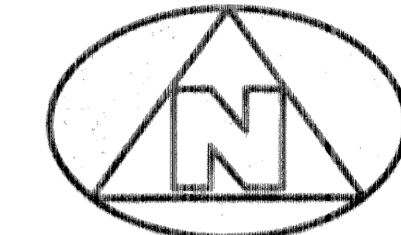


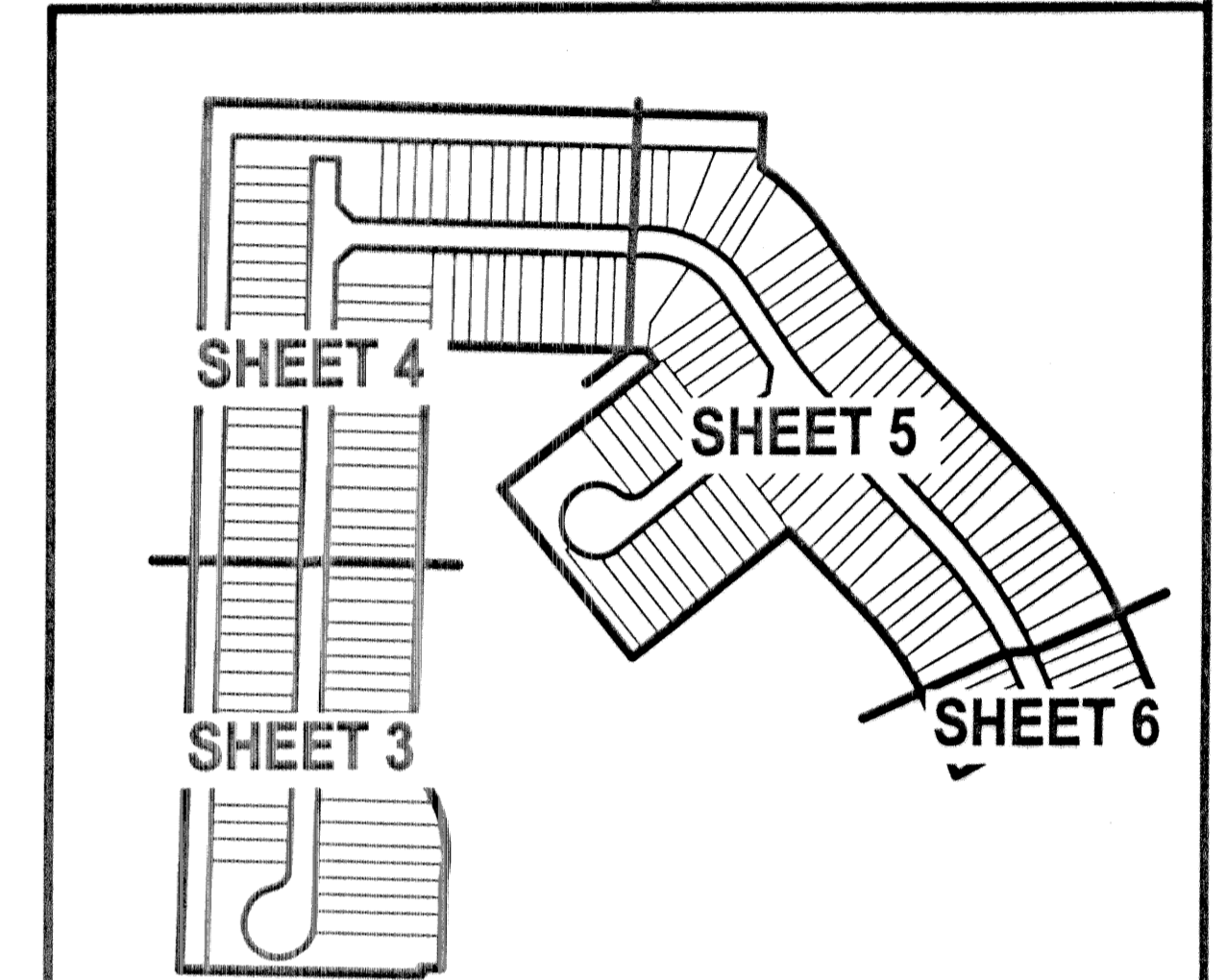
# BAYWINDS POD "H"

(A PART OF BAYWINDS RESIDENTIAL PLANNED DEVELOPMENT)

LYING IN SECTION 19, TOWNSHIP 43 SOUTH, RANGE 42 EAST, CITY OF WEST PALM BEACH, PALM BEACH COUNTY, FLORIDA

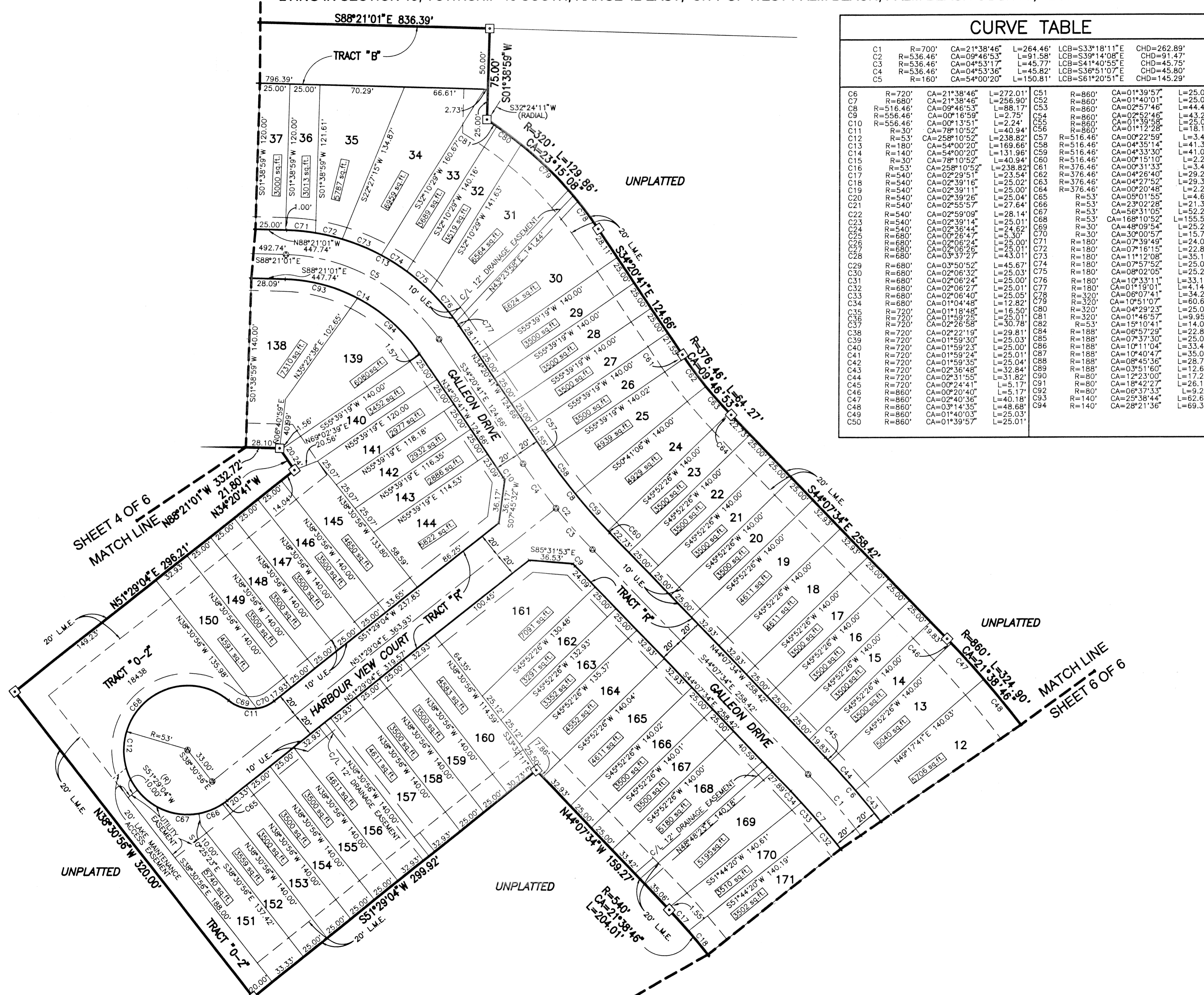


GRAPHIC SCALE (IN FEET)



SHEET INDEX

CURVE TABLE					
C1	R=700'	CA=21°38'46"	L=272.01'	LCB=S33°18'11"E	CHD=262.89'
C2	R=536.46'	CA=09°46'53"	L=91.58'	LCB=S39°14'08"E	CHD=91.47'
C3	R=536.46'	CA=04°53'17"	L=45.77'	LCB=S41°40'55"E	CHD=45.75'
C4	R=536.46'	CA=04°53'36"	L=45.82'	LCB=S36°51'07"E	CHD=45.80'
C5	R=160'	CA=54°00'20"	L=150.81'	LCB=S61°20'51"E	CHD=145.29'
C6	R=720'	CA=21°38'46"	L=272.01'	LCB=S33°18'11"E	CHD=262.89'
C7	R=680'	CA=21°38'46"	L=256.90'	LCB=S33°18'11"E	CHD=250.02'
C8	R=516.46'	CA=09°46'53"	L=88.17'	LCB=S39°14'08"E	CHD=88.17'
C9	R=556.46'	CA=00°16'59"	L=2.75'	LCB=S02°52'46"	CHD=2.75'
C10	R=556.46'	CA=00°13'51"	L=2.24'	LCB=S01°39'58"	CHD=2.24'
C11	R=30'	CA=78°10'52"	L=40.94'	LCB=S01°12'28"	CHD=18.13'
C12	R=53'	CA=258°10'52"	L=238.82'	LCB=S02°22'59"	CHD=3.45'
C13	R=180'	CA=54°00'20"	L=169.66'	LCB=S04°35'14"	CHD=141.35'
C14	R=140'	CA=54°00'20"	L=131.96'	LCB=S04°33'30"	CHD=109.99'
C15	R=30'	CA=78°10'52"	L=40.94'	LCB=S01°15'10"	CHD=2.28'
C16	R=53'	CA=258°10'52"	L=238.82'	LCB=S02°22'59"	CHD=3.45'
C17	R=540'	CA=02°29'51"	L=23.54'	LCB=S04°26'40"	CHD=29.20'
C18	R=540'	CA=02°39'16"	L=25.02'	LCB=S04°27'52"	CHD=29.33'
C19	R=540'	CA=02°39'11"	L=25.00'	LCB=S04°20'48"	CHD=22.28'
C20	R=540'	CA=02°39'26"	L=25.04'	LCB=S05°01'55"	CHD=24.65'
C21	R=540'	CA=02°55'57"	L=27.64'	LCB=S03°02'28"	CHD=21.31'
C22	R=540'	CA=02°59'09"	L=28.14'	LCB=S03°31'05"	CHD=25.28'
C23	R=540'	CA=02°39'14"	L=25.01'	LCB=S04°27'52"	CHD=29.33'
C24	R=540'	CA=02°36'44"	L=24.62'	LCB=S03°09'54"	CHD=25.22'
C25	R=680'	CA=00°26'47"	L=5.30'	LCB=S03°00'57"	CHD=15.72'
C26	R=680'	CA=02°06'24"	L=25.00'	LCB=S07°39'48"	CHD=24.08'
C27	R=680'	CA=02°06'26"	L=25.01'	LCB=S07°16'15"	CHD=22.84'
C28	R=680'	CA=03°37'27"	L=43.01'	LCB=S01°12'08"	CHD=35.19'
C29	R=680'	CA=03°50'52"	L=45.67'	LCB=S07°57'52"	CHD=25.02'
C30	R=680'	CA=02°06'32"	L=25.03'	LCB=S08°02'05"	CHD=25.24'
C31	R=680'	CA=02°06'24"	L=25.00'	LCB=S07°33'11"	CHD=33.15'
C32	R=680'	CA=02°06'27"	L=25.01'	LCB=S01°19'01"	CHD=4.14'
C33	R=680'	CA=02°06'40"	L=25.05'	LCB=S02°07'41"	CHD=34.22'
C34	R=680'	CA=01°04'48"	L=12.82'	LCB=S01°51'07"	CHD=60.61'
C35	R=720'	CA=01°18'48"	L=16.50'	LCB=S04°29'23"	CHD=25.08'
C36	R=720'	CA=01°59'25"	L=25.01'	LCB=S01°46'57"	CHD=9.95'
C37	R=720'	CA=02°26'58"	L=30.78'	LCB=S05°10'41"	CHD=14.04'
C38	R=720'	CA=02°22'19"	L=29.81'	LCB=S08°57'29"	CHD=22.83'
C39	R=720'	CA=01°59'30"	L=25.03'	LCB=S07°37'30"	CHD=25.02'
C40	R=720'	CA=01°59'23"	L=25.00'	LCB=S01°11'04"	CHD=33.42'
C41	R=720'	CA=01°59'24"	L=25.01'	LCB=S01°40'47"	CHD=35.04'
C42	R=720'	CA=01°59'35"	L=25.04'	LCB=S08°45'36"	CHD=28.74'
C43	R=720'	CA=02°36'48"	L=32.84'	LCB=S03°51'60"	CHD=12.69'
C44	R=720'	CA=02°31'55"	L=31.88'	LCB=S01°23'00"	CHD=17.29'
C45	R=720'	CA=00°24'41"	L=5.17'	LCB=S08°42'27"	CHD=26.12'
C46	R=860'	CA=00°20'40"	L=5.17'	LCB=S06°37'33"	CHD=9.25'
C47	R=860'	CA=02°40'36"	L=40.18'	LCB=S25°38'44"	CHD=62.66'
C48	R=860'	CA=03°14'35"	L=48.68'	LCB=S02°21'36"	CHD=69.30'
C49	R=860'	CA=01°40'03"	L=25.03'	LCB=S02°21'36"	CHD=69.30'
C50	R=860'	CA=01°39'57"	L=25.01'	LCB=S02°21'36"	CHD=69.30'



- LEGEND:**
- (R) DENOTES A RADIAL LINE
  - C/L DENOTES A CENTERLINE
  - R DENOTES RADIUS DISTANCE
  - L DENOTES ARC LENGTH DISTANCE
  - CA DENOTES CENTRAL ANGLE
  - L.M.E. DENOTES A LAKE MAINTENANCE EASEMENT
  - U.E. DENOTES A UTILITY EASEMENT
  - D.E. DENOTES A DRAINAGE EASEMENT
  - DENOTES A SET PERMANENT REFERENCE MONUMENT (NO. 2171)
  - DENOTES A FOUND PERMANENT REFERENCE MONUMENT (NO. 4396)
  - ⊙ DENOTES A SET PERMANENT CONTROL POINT (NO. 2171)

- SURVEYOR'S NOTES AND LEGEND:**
- THE BASE BEARING, AS SHOWN HEREON, IS N01°45'20"E ALONG THE WEST LINE OF SECTION 19, TOWNSHIP 43 SOUTH, RANGE 42 EAST, PALM BEACH COUNTY, FLORIDA
  - IN THOSE INSTANCES WHERE UTILITY/DRAINAGE STRUCTURES ARE CONSTRUCTED IN CONFLICT WITH THE PLATTED PERMANENT CONTROL POINTS (P.C.P.) POSITION, STRADDLERS MONUMENTED AS PERMANENT CONTROL POINTS WILL BE SET TO REFERENCE THE PLATTED P.C.P. POSITION.
  - LINE WHICH INTERSECT CURVES ARE NOT RADIAL, UNLESS OTHERWISE NOTED.

THIS INSTRUMENT WAS PREPARED BY WM. R. VAN CAMPEN, R.L.S., IN AND FOR THE OFFICES OF BENCH MARK LAND SURVEYING & MAPPING, INC., 4152 WEST BLUE HERON BOULEVARD, SUITE 121, RIVIERA BEACH, FLORIDA

**BENCH MARK LAND SURVEYING & MAPPING, INC.**  
 4152 W. BLUE HERON BOULEVARD - SUITE 121  
 RIVIERA BEACH - FLORIDA 33404  
 PHONE: (561) 848-2102 • L.B. 2171 • FAX: (561) 844-9659  
 EMAIL: bmlsm@aol.com WEB: http://members.aol.com/bmlsm

**RECORD PLAT**  
**BAYWINDS POD "H"**

DWN	FB	DATE 9-17-01	WO.# P147H
CKD	FILE P147HPLAT	SCALE 1"=40'	SHEET 5 OF 6