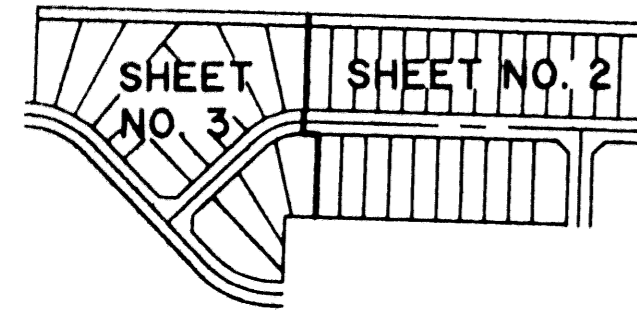


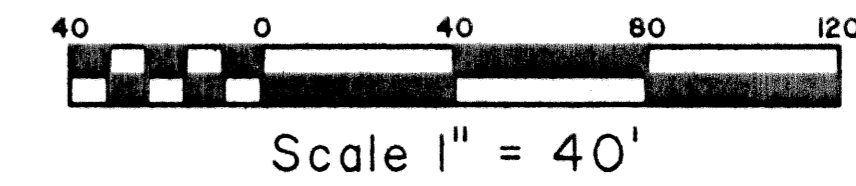
BELLA TERRA P.U.D. PLAT NO. 2

BEING A REPLAT OF A PORTION OF TRACT "F" AND ALL OF TRACT "I",
 BELLA TERRA P.U.D. PLAT I, AS RECORDED IN PLAT BOOK 94, PAGES 13 THROUGH 28,
 PUBLIC RECORDS OF PALM BEACH COUNTY, FLORIDA AND LYING IN SECTION 36, TOWNSHIP 43 SOUTH
 RANGE 41 EAST, VILLAGE OF ROYAL PALM BEACH, PALM BEACH COUNTY, FLORIDA.
 JUNE, 2002 SHEET 2 OF 3

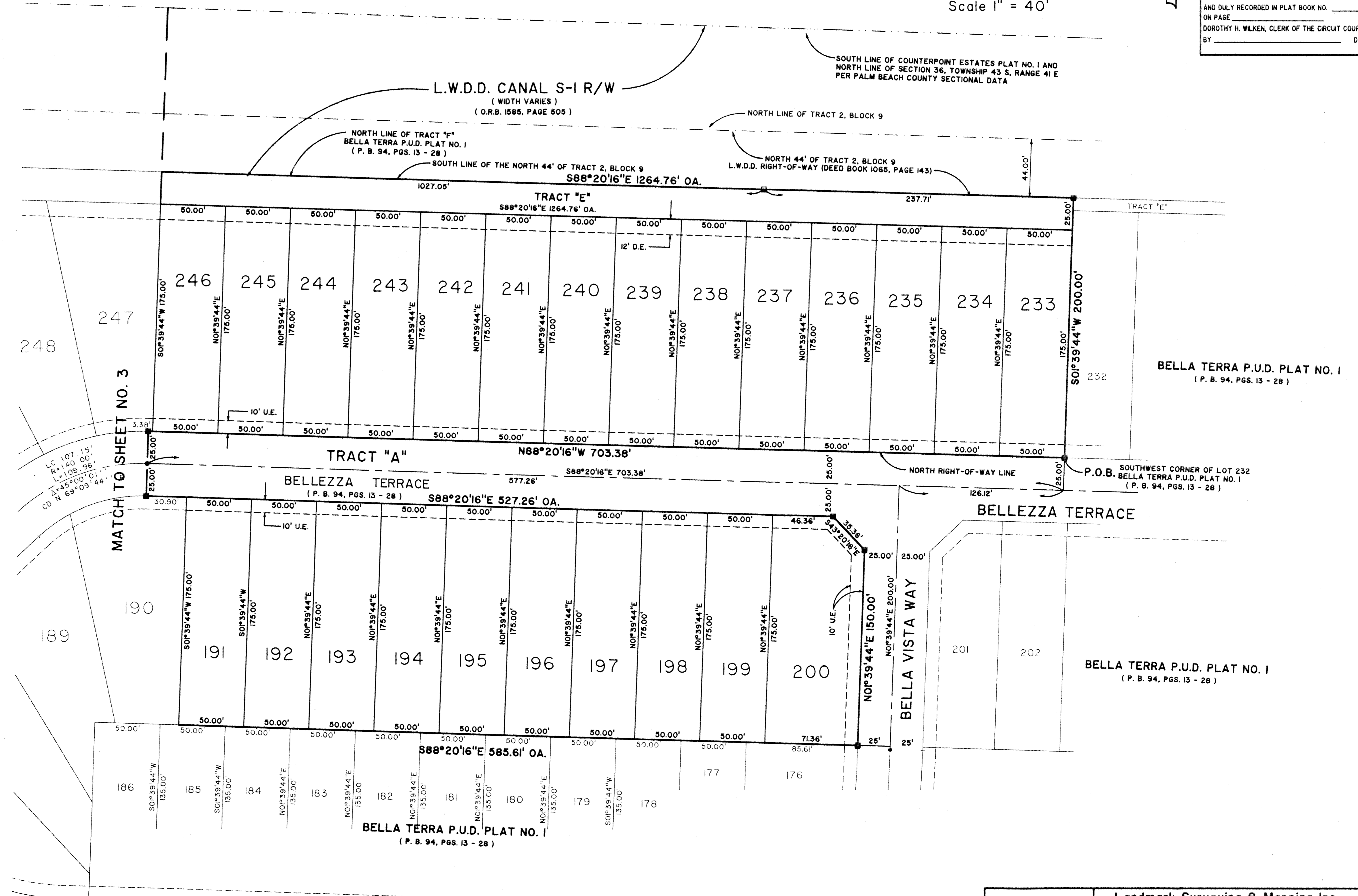
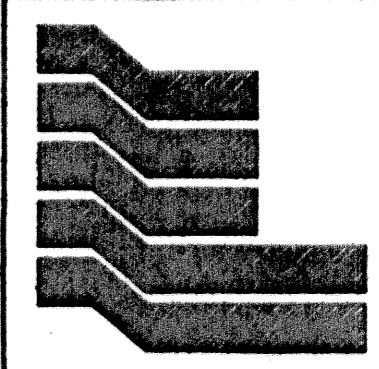


KEY MAP
NOT TO SCALE

COUNTERPOINT ESTATES PLAT NO. I
 (P.B. 32, PAGES 156 - 160)



STATE OF FLORIDA SS
 COUNTY OF PALM BEACH
 THIS PLAT WAS FILED FOR RECORD AT _____
 M., THIS _____ DAY OF _____ 2002
 AND DULY RECORDED IN PLAT BOOK NO. _____
 ON PAGE _____
 DOROTHY H. WILKEN, CLERK OF THE CIRCUIT COURT
 BY _____ D.C.

Landmark Surveying & Mapping Inc.
 1850 Forest Hill Boulevard
 Ph. (561) 433-5405 Suite 100 W.P.B. Florida
 LB # 4396

BELLA TERRA P.U.D. PLAT NO. 2