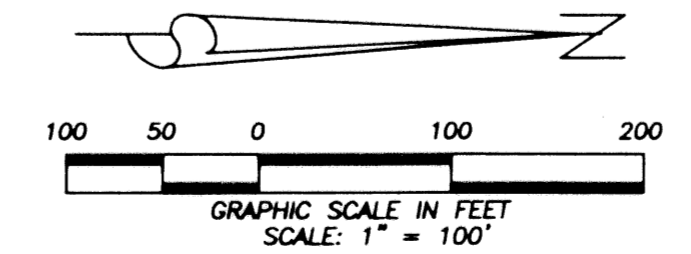
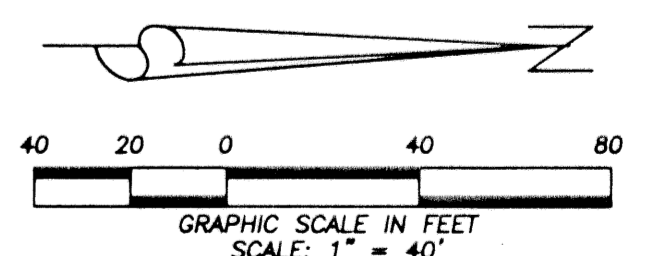
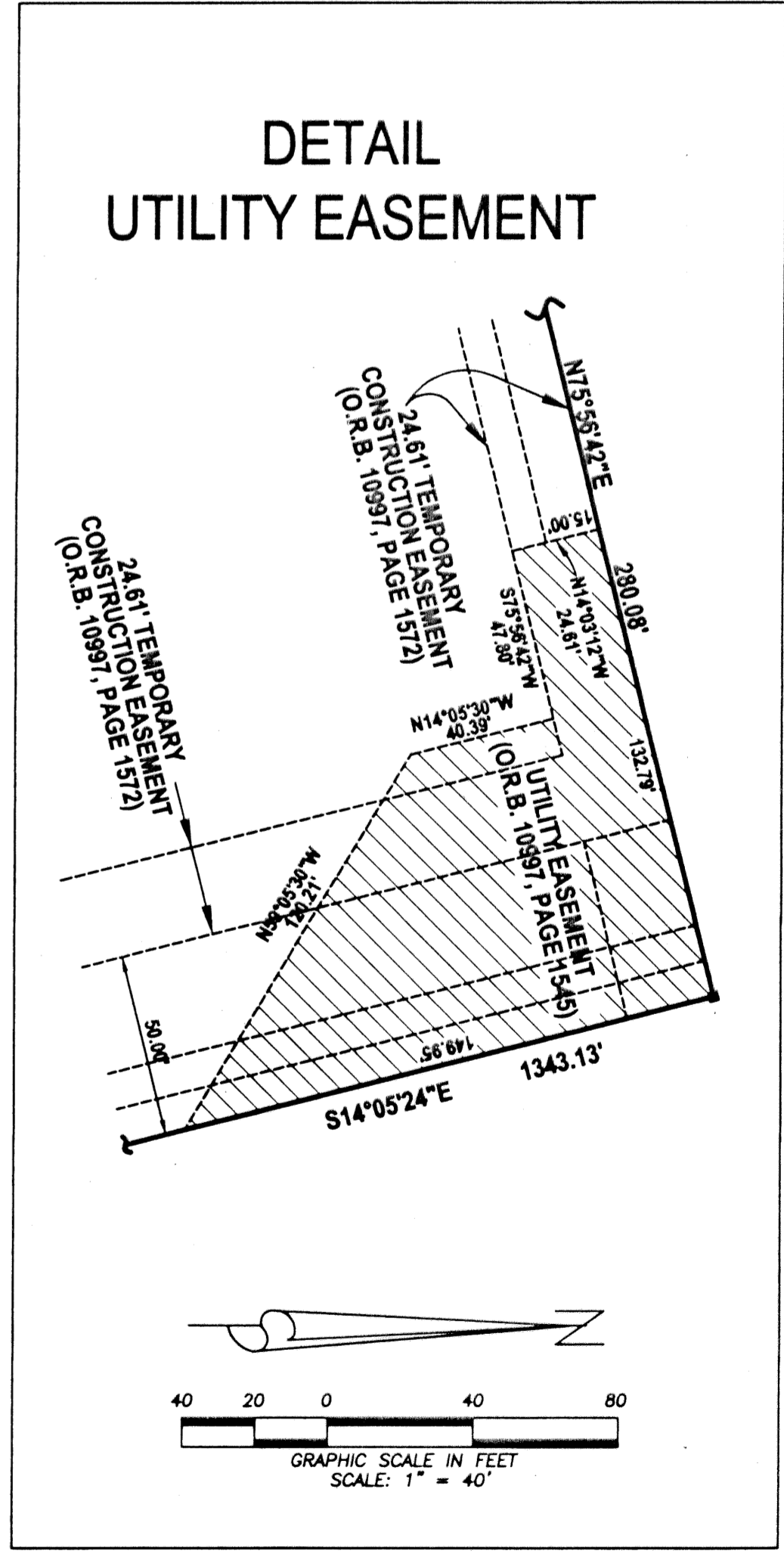
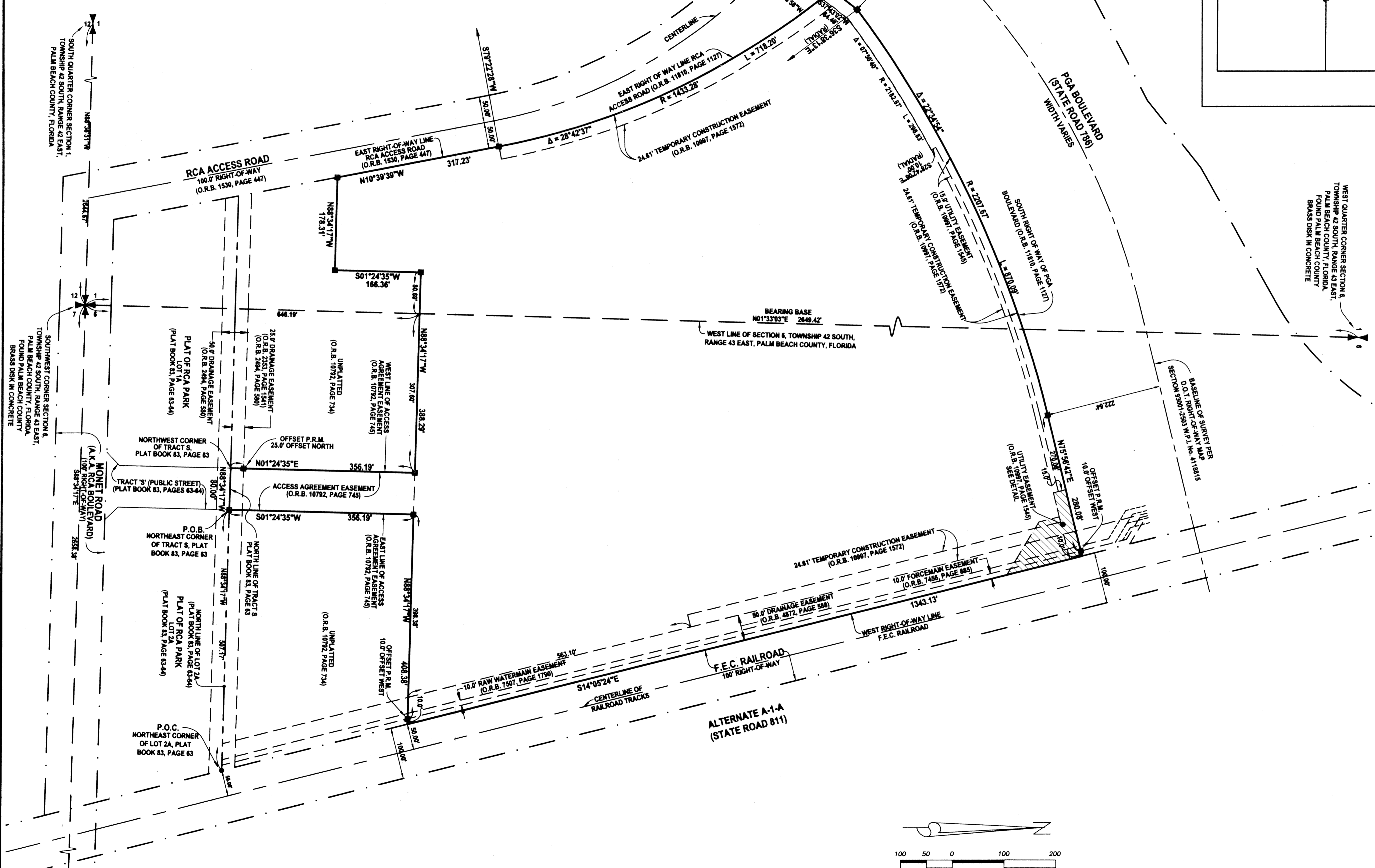
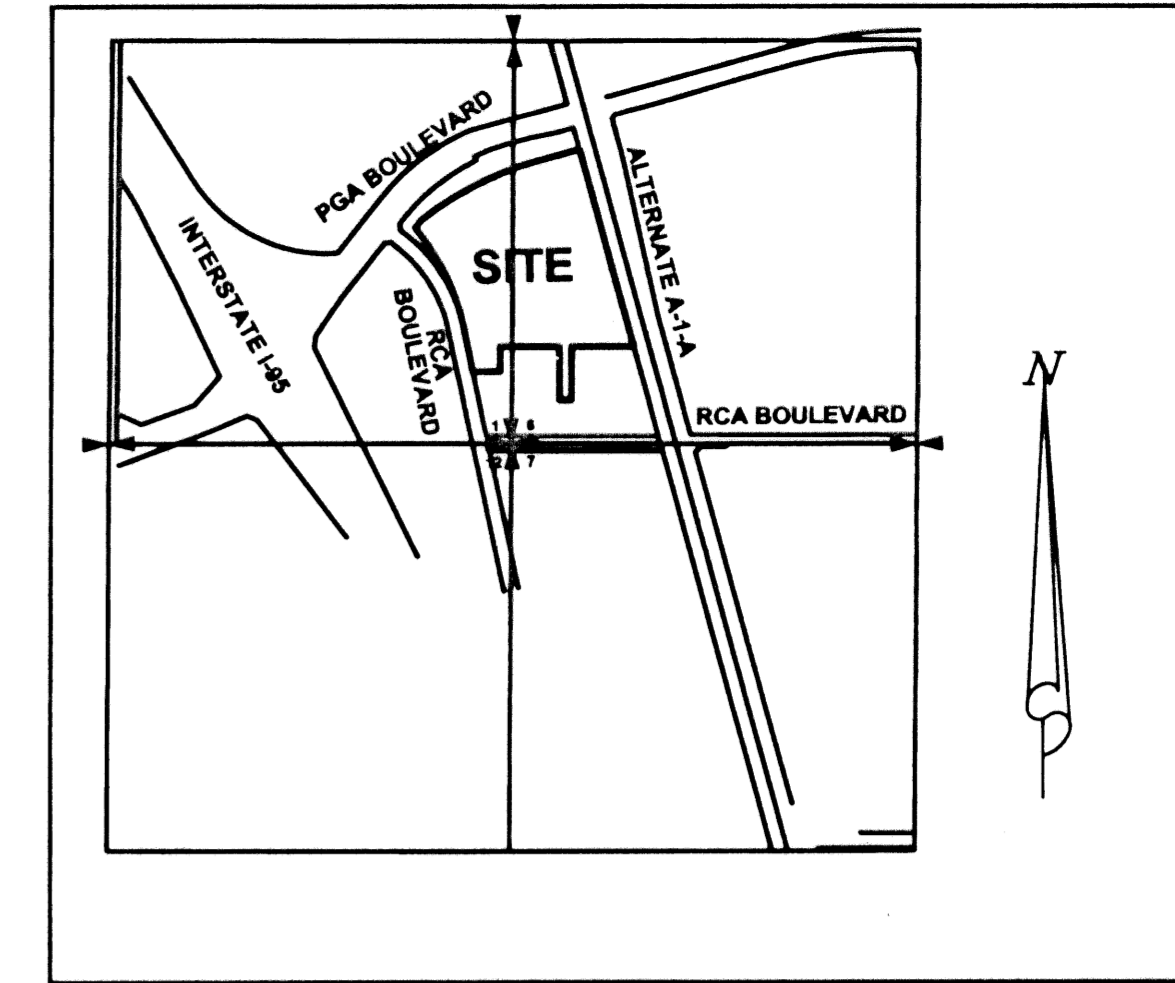


# MACARTHUR PARCEL 5B

SITUATE IN SECTION 1, TOWNSHIP 42 SOUTH, RANGE 42 EAST AND SECTION 6, TOWNSHIP 42 SOUTH, RANGE 43 EAST, CITY OF PALM BEACH GARDENS, PALM BEACH COUNTY, FLORIDA  
SEPTEMBER, 2002  
SHEET 2 OF 2



### ABBREVIATIONS

- POC = POINT OF COMMENCEMENT
- POB = POINT OF BEGINNING
- PRC = POINT OF REVERSE CURVE
- PC = POINT OF CURVE
- PT = POINT OF TANGENT
- NR = NON RADIAL
- CL = CENTER LINE
- R = RADIUS
- L = ARC LENGTH
- Δ = DELTA
- F.E.C. = FLORIDA EAST COAST RAILROAD
- PRM = PERMANENT REFERENCE MONUMENT
- LB = LICENSED BUSINESS
- DOT = DEPARTMENT OF TRANSPORTATION
- LBE = LANDSCAPE BUFFER EASEMENT
- LAE = LIMITED ACCESS EASEMENT
- DE = DRAINAGE EASEMENT
- UE = UTILITY EASEMENT
- ORB = OFFICIAL RECORD BOOK
- PB = PLAT BOOK

**LIDBERG LAND SURVEYING, INC.**  
 675 West Indian Town Road, Suite 200, Jupiter, Florida 33458 TEL. 561-746-8454

CAD K:\AUTOCAD 2000\014242\98-158\DWG\1588306.DWG			
REF K:\AUTOCAD\MACARTHUR\1588-105C.DWG			
FLD	A.M./B.D.	F.B. 291 299 308 311	PC. 48 72-73 74 07
OFF	S.F.B.		JOB 98-158-306 DATE 03/12/02
CKD	D.C.L.	SHEET 2 OF 2	DWG D98-158P