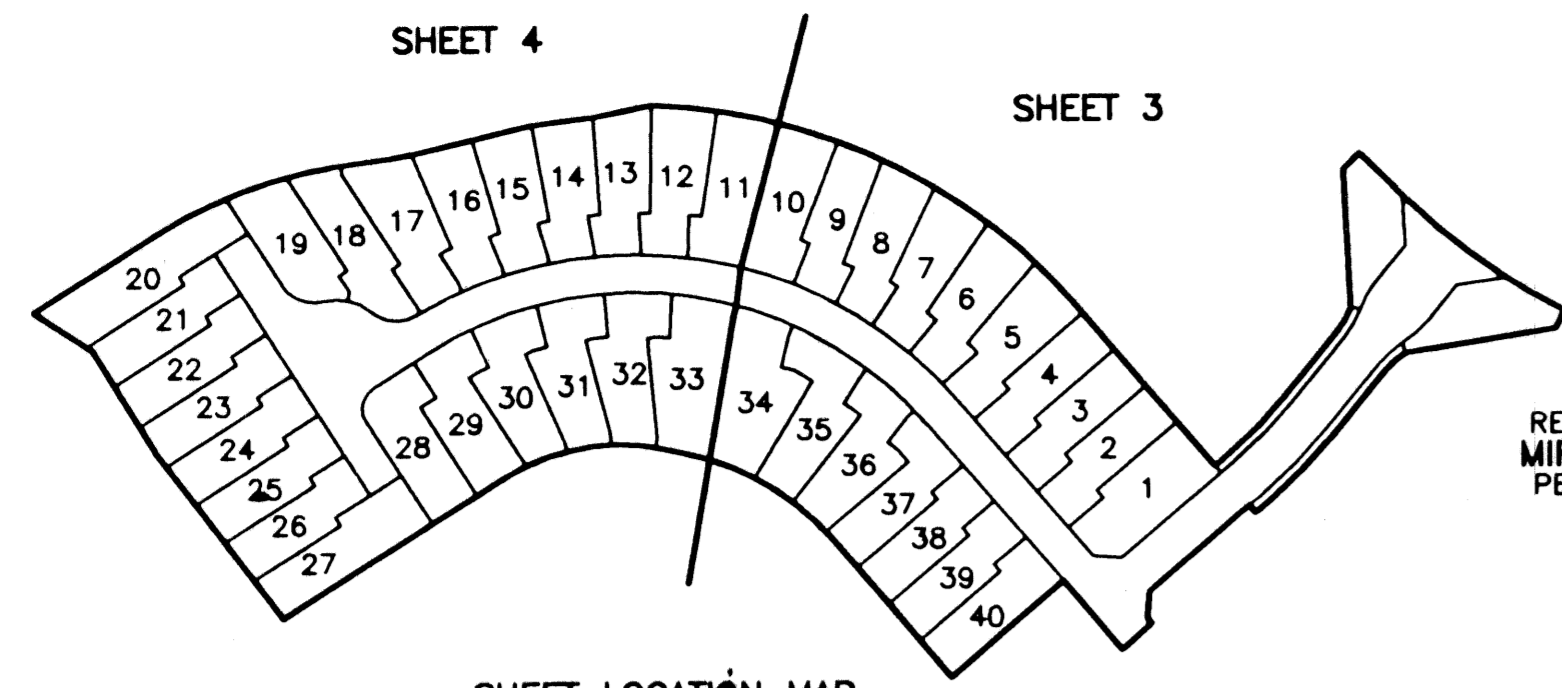
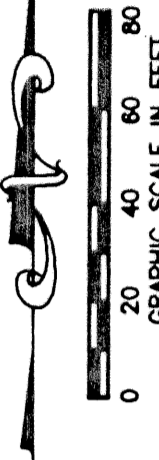


MIRASOL PARCEL THIRTEEN

PART OF GOLF DIGEST P.C.D.
SECTION 4, TOWNSHIP 42 SOUTH, RANGE 42 EAST,
CITY OF PALM BEACH GARDENS,
PALM BEACH COUNTY, FLORIDA
SHEET 3 OF 4

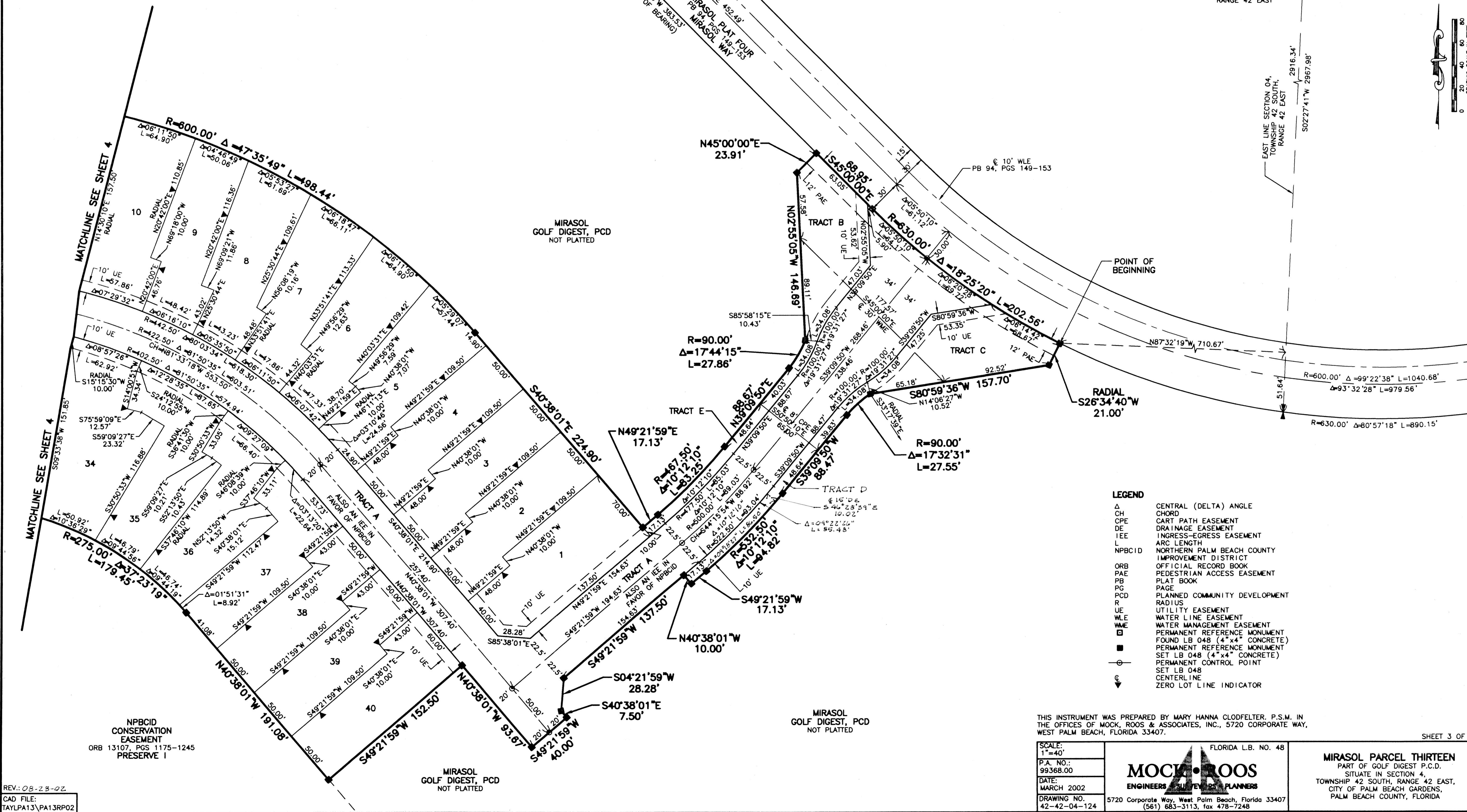
STATE OF FLORIDA
COUNTY OF PALM BEACH
THIS PLAT WAS FILED FOR
RECORD _____ DAY OF _____
AD, 2002 AND DULY RECORDED
IN PLAT BOOK _____ ON PAGES
_____ AND _____
DOROTHY H. WILKEN, CLERK
BY: _____, D.C.

CIRCUIT COURT SEAL



REFERENCE MONUMENT
MIRASOL PLAT FOUR
PB 94, PGS 149-153

SHEET LOCATION MAP
NOT TO SCALE



- LEGEND**
- Δ CENTRAL (DELTA) ANGLE
 - CH CHORD
 - CPE CART PATH EASEMENT
 - DE DRAINAGE EASEMENT
 - IEE INGRESS-EGRESS EASEMENT
 - ARC ARC LENGTH
 - NPBCID NORTHERN PALM BEACH COUNTY IMPROVEMENT DISTRICT
 - ORB OFFICIAL RECORD BOOK
 - PAE PEDESTRIAN ACCESS EASEMENT
 - PB PLAT BOOK
 - PCD PLANNED COMMUNITY DEVELOPMENT
 - R RADIUS
 - UE UTILITY EASEMENT
 - WLE WATER LINE EASEMENT
 - WME WATER MANAGEMENT EASEMENT
 - PERMANENT REFERENCE MONUMENT FOUND LB 048 (4" x 4" CONCRETE)
 - PERMANENT REFERENCE MONUMENT SET LB 048 (4" x 4" CONCRETE)
 - PERMANENT CONTROL POINT SET LB 048
 - ⊙ CENTERLINE
 - ⚡ ZERO LOT LINE INDICATOR

THIS INSTRUMENT WAS PREPARED BY MARY HANNA CLODFELTER, P.S.M. IN THE OFFICES OF MOCK, ROOS & ASSOCIATES, INC., 5720 CORPORATE WAY, WEST PALM BEACH, FLORIDA 33407.

SCALE:
1"=40'
P.A. NO.:
99368.00
DATE:
MARCH 2002
DRAWING NO.
42-42-04-124

FLORIDA L.B. NO. 48

MOCK ROOS
ENGINEERS SURVEYORS PLANNERS

5720 Corporate Way, West Palm Beach, Florida 33407
(561) 683-3113, fax 478-7248

MIRASOL PARCEL THIRTEEN
PART OF GOLF DIGEST P.C.D.
SITUATE IN SECTION 4,
TOWNSHIP 42 SOUTH, RANGE 42 EAST,
CITY OF PALM BEACH GARDENS,
PALM BEACH COUNTY, FLORIDA

S:\toy\toy\p013\dwg\p013.rpd02.dwg 06/27/02 04:17:07 PM EDT
REV: 08-23-02
CAD FILE:
TAYLPA13\PA13RPO2