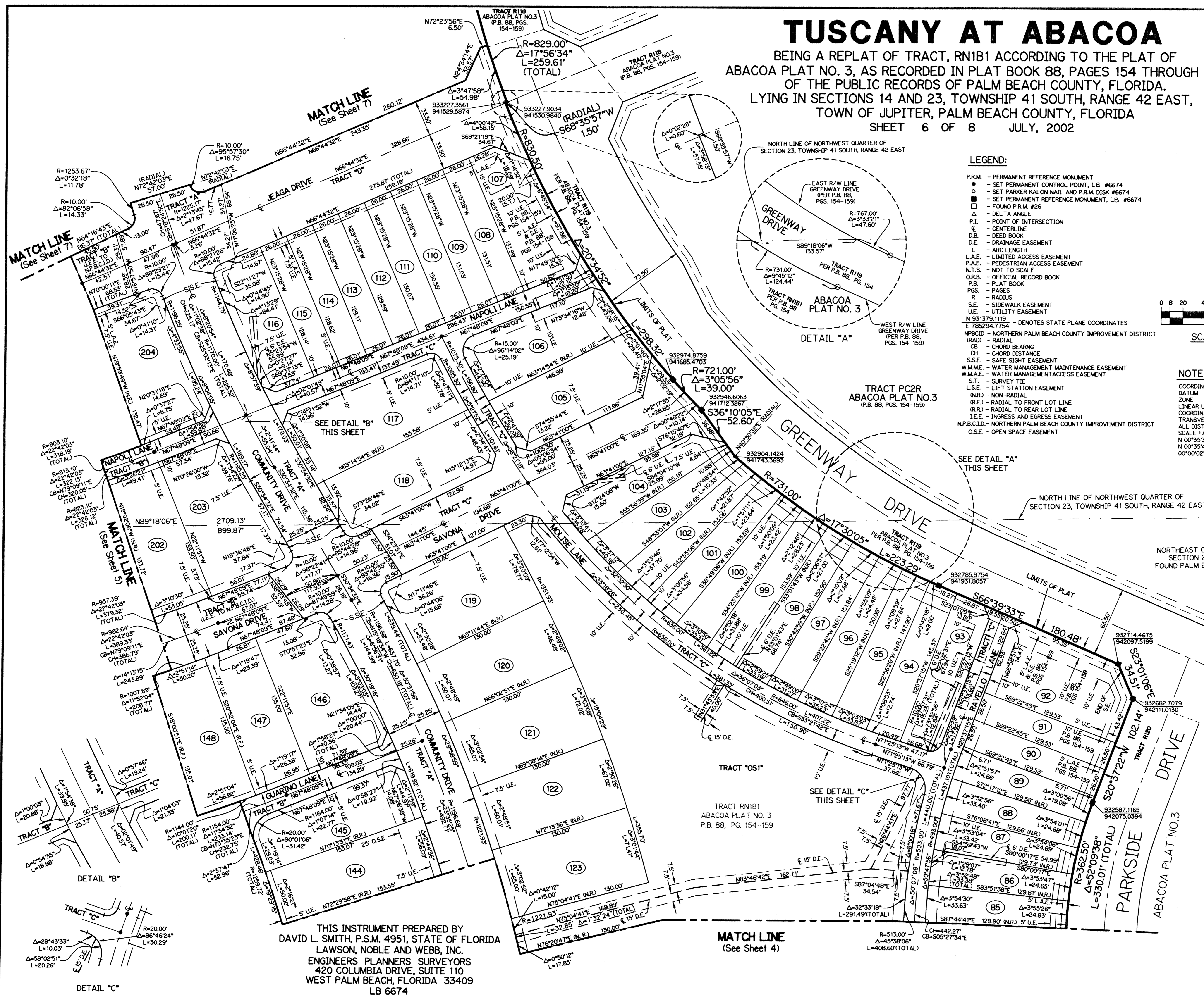


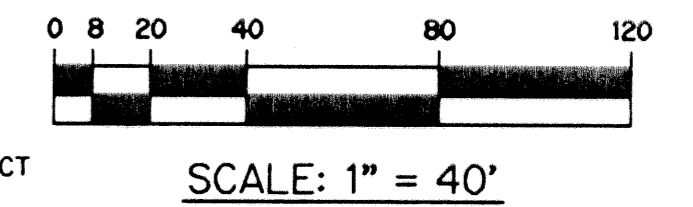
TUSCANY AT ABACOA

BEING A REPLAT OF TRACT, RN1B1 ACCORDING TO THE PLAT OF ABACOA PLAT NO. 3, AS RECORDED IN PLAT BOOK 88, PAGES 154 THROUGH 159 OF THE PUBLIC RECORDS OF PALM BEACH COUNTY, FLORIDA, LYING IN SECTIONS 14 AND 23, TOWNSHIP 41 SOUTH, RANGE 42 EAST, TOWN OF JUPITER, PALM BEACH COUNTY, FLORIDA
 SHEET 6 OF 8 JULY, 2002



LEGEND:

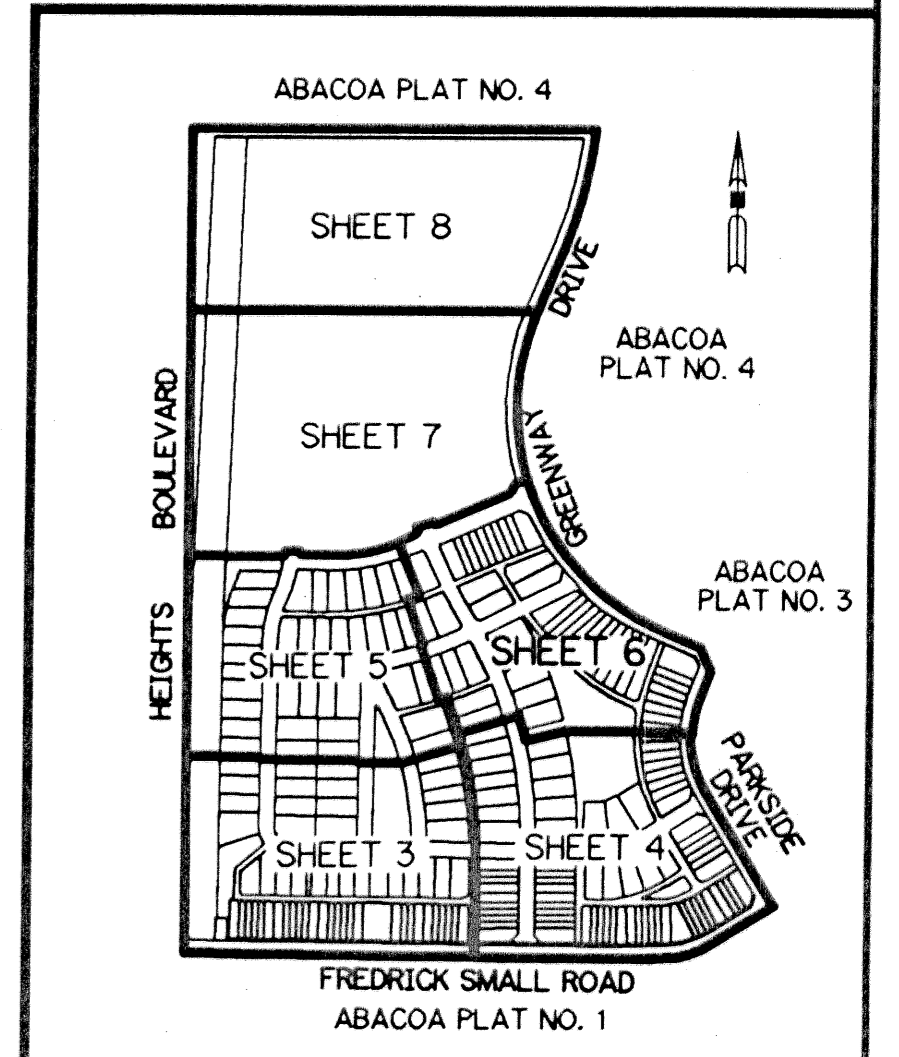
- P.R.M. - PERMANENT REFERENCE MONUMENT
- - SET PERMANENT CONTROL POINT, I.B. #6674
- - SET PARKER KALON NAIL AND P.R.M. DISK #6674
- - SET PERMANENT REFERENCE MONUMENT, I.B. #6674
- - FOUND P.R.M. #26
- Δ - DELTA ANGLE
- P.I. - POINT OF INTERSECTION
- C - CENTERLINE
- D.B. - DEED BOOK
- D.E. - DRAINAGE EASEMENT
- L - ARC LENGTH
- L.A.E. - LIMITED ACCESS EASEMENT
- P.A.E. - PEDESTRIAN ACCESS EASEMENT
- N.T.S. - NOT TO SCALE
- OR.B. - OFFICIAL RECORD BOOK
- P.B. - PLAT BOOK
- P.G. - PAGES
- R - RADIUS
- S.E. - SIDEWALK EASEMENT
- U.E. - UTILITY EASEMENT
- N 93179.1119 - DENOTES STATE PLANE COORDINATES
- E 783294.7754 - DENOTES STATE PLANE COORDINATES
- NPBCID - NORTHERN PALM BEACH COUNTY IMPROVEMENT DISTRICT
- (RAD) - RADIAL
- CB - CHORD BEARING
- CH - CHORD DISTANCE
- S.S.E. - SAFE SIGHT EASEMENT
- W.M.M.E. - WATER MANAGEMENT MAINTENANCE EASEMENT
- W.M.A.E. - WATER MANAGEMENT ACCESS EASEMENT
- S.T. - SURVEY TIE
- L.S.E. - LIFT STATION EASEMENT
- (NRJ) - NON-RADIAL
- (RFJ) - RADIAL TO FRONT LOT LINE
- (RRJ) - RADIAL TO REAR LOT LINE
- I.E.E. - INGRESS AND EGRESS EASEMENT
- NP.B.C.I.D. - NORTHERN PALM BEACH COUNTY IMPROVEMENT DISTRICT
- O.S.E. - OPEN SPACE EASEMENT



NOTE:

COORDINATES SHOWN ARE GRID COORDINATES
 DATUM = NAD 83 (1990 ADJUSTMENT)
 ZONE = FLORIDA EAST ZONE
 LINEAR UNIT = U.S. SURVEY FEET
 COORDINATE SYSTEM 1983 STATE PLANE
 TRANSVERSE MERCATOR PROJECTION
 ALL DISTANCES ARE GROUND
 SCALE FACTOR = 1.0000077
 N 00°35'39" W (PLAT BEARING)
 N 00°35'41" W (GRID BEARING)
 00°0'02" = COUNTERCLOCKWISE BEARING ROTATION, PLAT TO GRID

KEY MAP



THIS INSTRUMENT PREPARED BY
 DAVID L. SMITH, P.S.M. 4951, STATE OF FLORIDA
 LAWSON, NOBLE AND WEBB, INC.
 ENGINEERS PLANNERS SURVEYORS
 420 COLUMBIA DRIVE, SUITE 110
 WEST PALM BEACH, FLORIDA 33409
 LB 6674