

PARCEL "A", LEXINGTON 1, OF SHERBROOKE, P.U.D., A REPLAT

BEING A REPLAT OF PARCEL "A", LEXINGTON 1, OF SHERBROOKE AS RECORDED IN PLAT BOOK 32, PAGES 195-198, INCLUSIVE, OF THE PUBLIC RECORDS OF PALM BEACH COUNTY, FLORIDA.
SECTION 6, TOWNSHIP 45 SOUTH, RANGE 42 EAST

FEBRUARY, 2002
SHEET 2 OF 2

LEXINGTON I, OF SHERBROOKE, P. U. D.
PLAT BOOK 32, PAGES 195-198

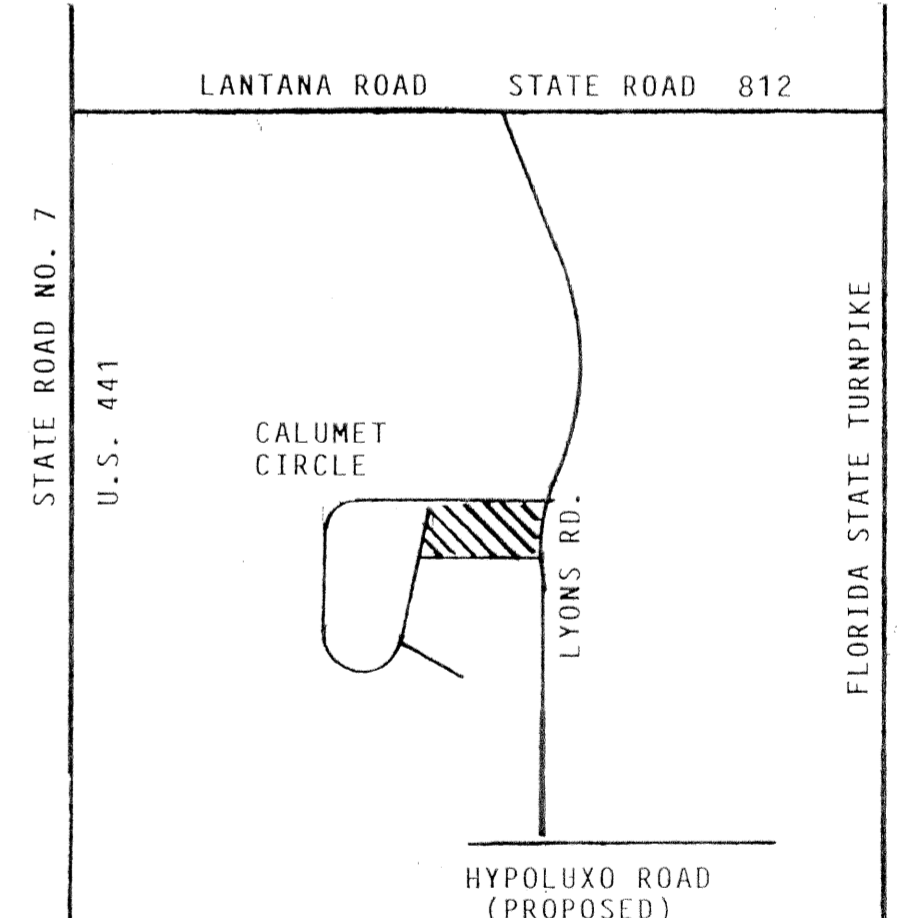
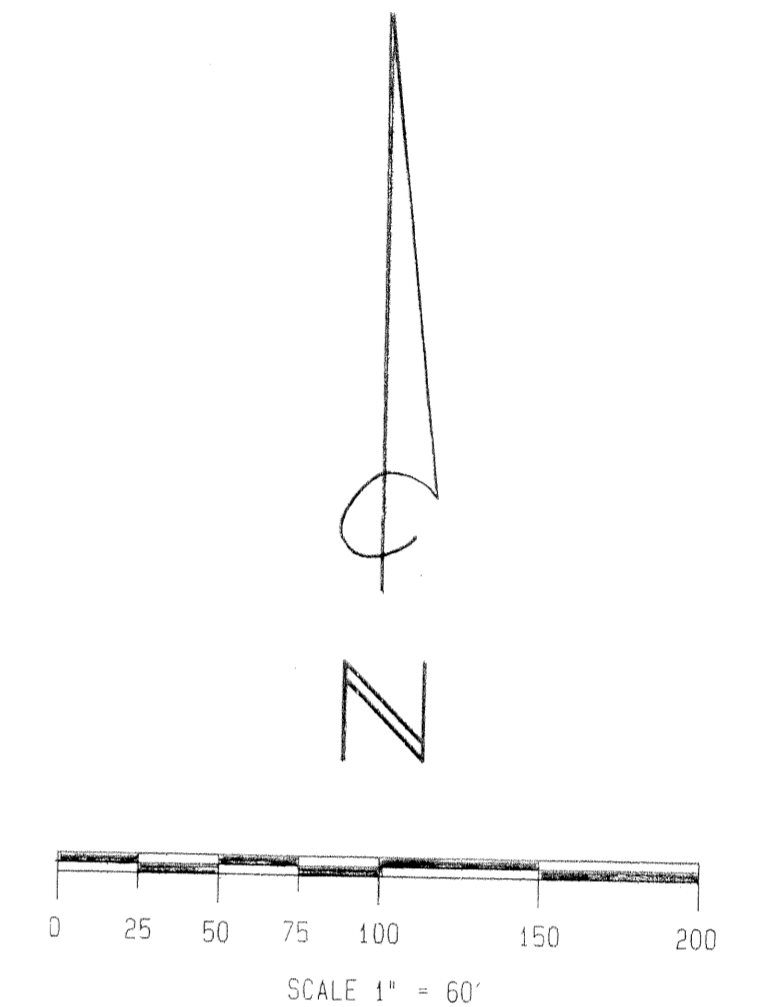
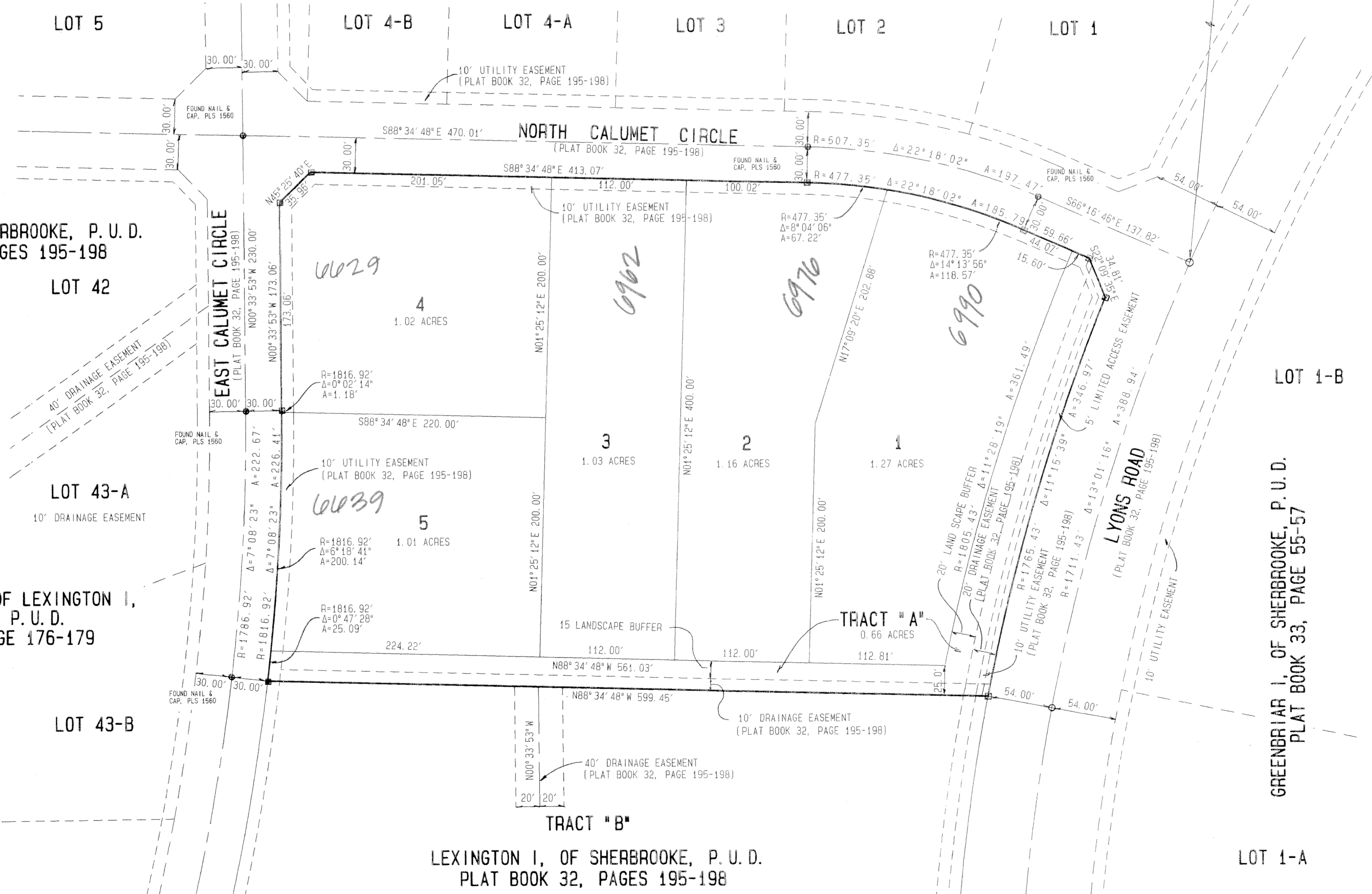
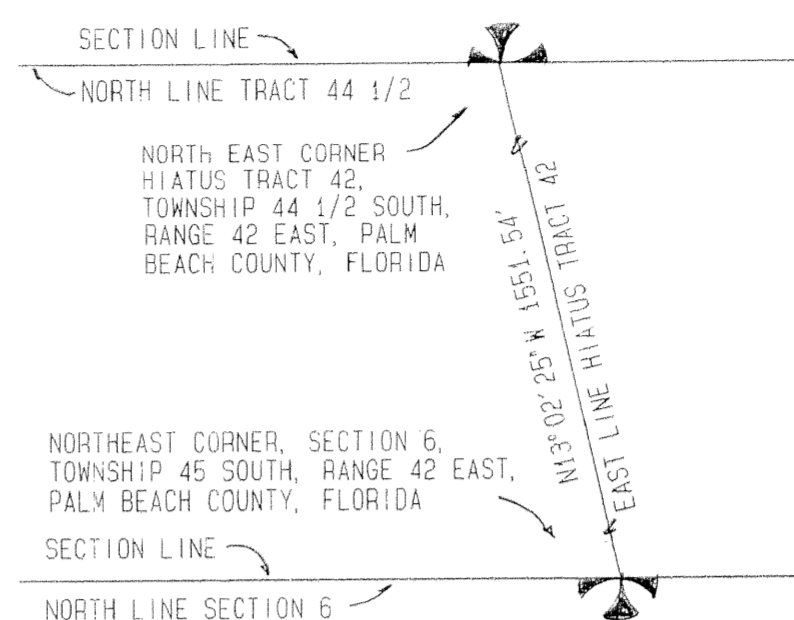
REPLAT OF PORTIONS OF LEXINGTON I,
OF SHERBROOKE, P. U. D.
PLAT BOOK 68, PAGE 176-179

LEXINGTON I, OF SHERBROOKE, P. U. D.
PLAT BOOK 32, PAGES 195-198

LEXINGTON I, OF SHERBROOKE, P. U. D.
PLAT BOOK 32, PAGES 195-198

REPLAT OF PORTIONS OF LEXINGTON I,
OF SHERBROOKE, P. U. D.
PLAT BOOK 68, PAGE 176-179

TRACT "B"
LEXINGTON I, OF SHERBROOKE, P. U. D.
PLAT BOOK 32, PAGES 195-198



SUBDIVISION LEXINGTON I, OF SHERBROOKE, REPL. PAR. A
BOOK 96 PAGE 114
FLOOD ZONE B FLOOD MAP # 170 A
QUAD # 49 ZONING RE
SE R-01-B25
TAZ 1026
PUD NAME

- LEGEND:**
- INDICATES P.R.M. (PERMANENT REFERENCE MONUMENT) L.B. 2102
 - INDICATES P.C.P. (PERMANENT CONTROL POINT) FOUND L.B. 1560
 - INDICATES P.C.P. (PERMANENT CONTROL POINT) SET L.B. 2102

LB 2102 Joe Tucker
LAND SURVEYORS
RICHARD L. SHEPARD and Associates
219 S.E. 23RD AVENUE Phone: Boca (561) 391-4388
P.O. BOX 759 Boynton (561) 737-6546
BOYNTON BEACH, FLORIDA 33435 FAX: (561) 734-7546