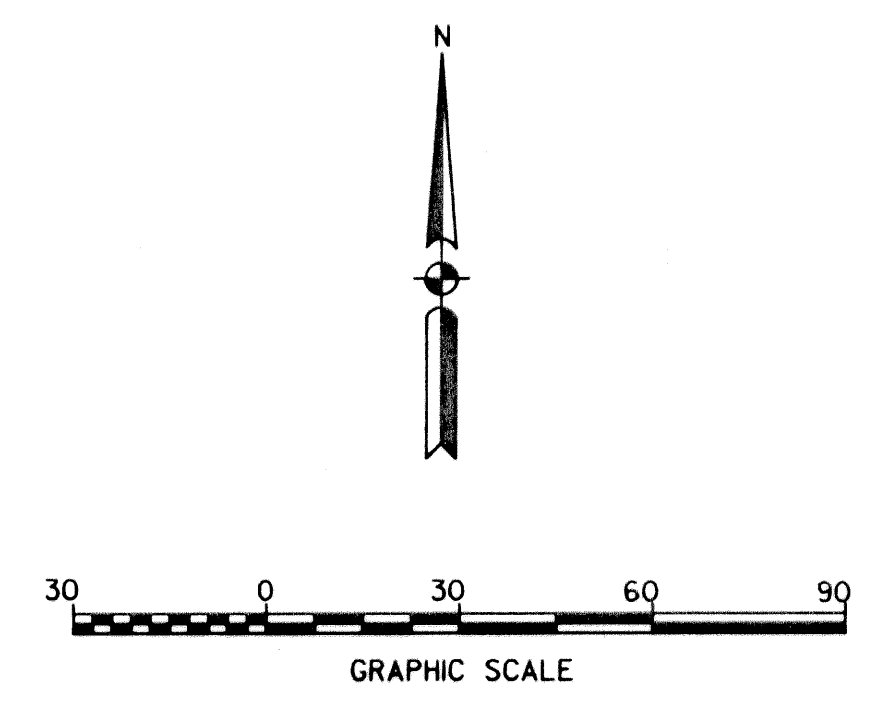
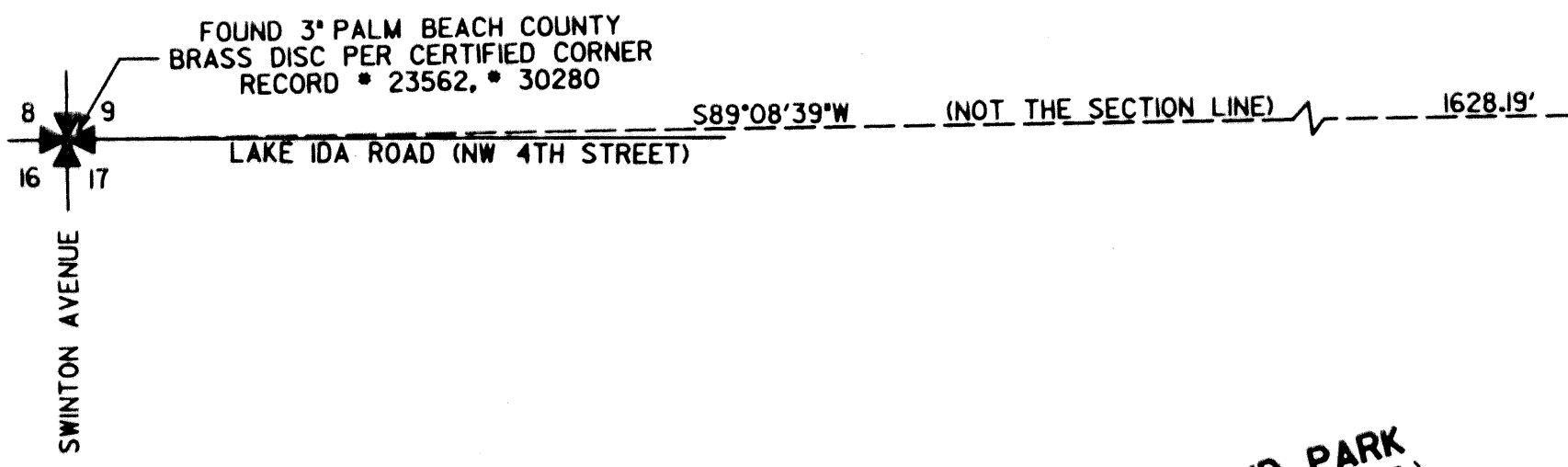


SAN SEBASTIAN

A REPLAT OF A PORTION OF L.R. BENJAMIN'S SUBDIVISION, PLAT BOOK 12, PAGE 18 AND A PORTION OF BLOCK 106, TOWN OF LINTON, PLAT BOOK 1, PAGE 3 (SHEET 1), SECTION 16, TOWNSHIP 46 SOUTH, RANGE 43 EAST, CITY OF DELRAY BEACH, PALM BEACH COUNTY, FLORIDA



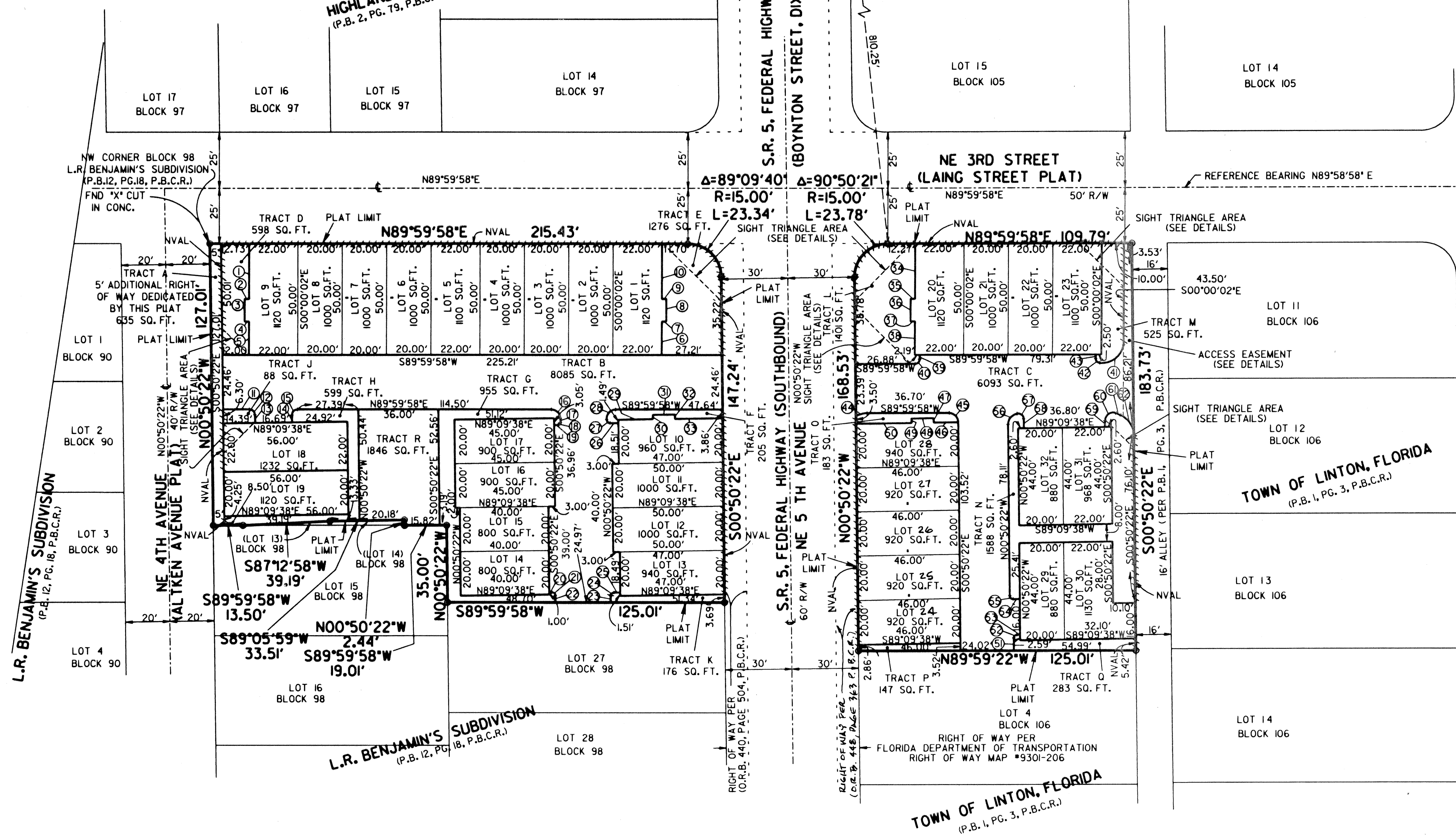
COUNTY OF PALM BEACH }
STATE OF FLORIDA } SS
THIS PLAT WAS FILED FOR
RECORD AT _____
THIS _____ DAY OF _____ 200
AND DULY RECORDED
IN PLAT BOOK NO. _____
AT PAGE(S) _____
DOROTHY H. WILKENS, CLERK
BY: _____
DEPUTY CLERK

LINE TABLE

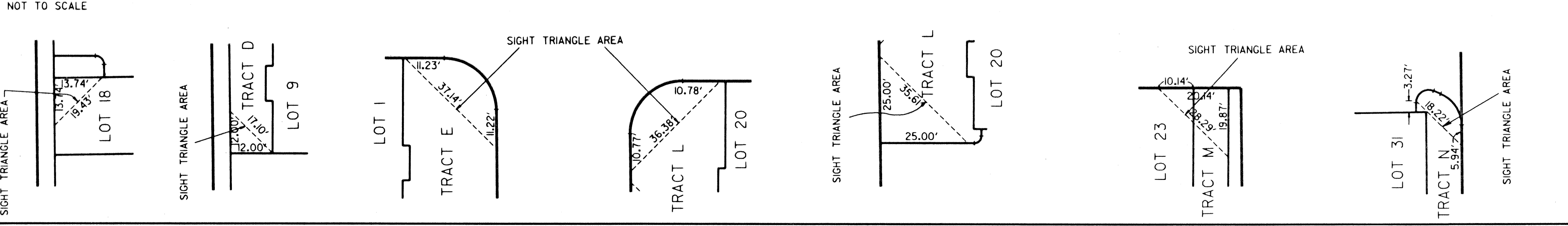
1	S00°00'02"E	25.00'
2	S89°59'58"W	2.00'
3	S00°00'02"E	10.00'
4	N89°59'58"E	2.00'
5	S00°00'02"E	15.00'
6	N00°00'02"W	15.00'
7	N89°59'58"E	2.00'
8	N00°00'02"W	10.00'
9	S89°59'58"W	2.00'
10	N00°00'02"W	25.00'
11	N89°59'58"E	11.93'
12	R=2.50' Δ=89°09'40" L=3.89'	
13	S00°50'22"E	3.62'
14	N00°50'22"W	3.31'
15	R=2.50' Δ=90°50'20" L=3.96'	
16	R=4.00' Δ=89°09'50" L=6.22'	
17	S00°50'22"E	1.98'
18	R=1.00' Δ=90°00'00" L=1.57'	
19	S89°09'38"W	1.86'
20	N89°09'38"E	1.20'
21	R=1.50' Δ=90°00'00" L=2.36'	
22	S00°50'22"E	3.12'
23	N00°50'22"W	2.95'
24	R=1.50' Δ=90°00'00" L=2.36'	
25	N89°09'38"E	2.83'
26	S89°09'38"W	3.75'
27	R=1.50' Δ=90°00'00" L=2.36'	
28	R=4.55' Δ=90°50'20" L=7.21'	
29	S89°09'38"W	15.50'
30	S00°50'22"E	2.00'
31	S89°09'38"W	10.00'
32	N00°50'22"W	2.00'
33	S89°09'38"W	21.50'
34	S00°00'02"E	25.00'
35	S89°59'58"W	2.00'
36	S00°00'02"E	10.00'
37	N89°59'58"E	2.00'
38	S00°00'02"E	15.00'
39	S00°00'02"E	1.99'
40	R=2.00' Δ=90°00'00" L=3.14'	
41	R=10.50' Δ=89°59'43" L=16.49'	
42	R=2.00' Δ=90°00'00" L=3.14'	
43	N00°00'02"W	2.00'
44	R=10.00' Δ=30°28'59" L=5.32'	
45	R=4.27' Δ=89°09'40" L=6.64'	
46	S89°09'38"W	11.00'
47	N00°50'22"W	2.00'
48	S89°09'38"W	10.00'
49	S00°50'22"E	2.00'
50	S89°09'38"W	25.00'
51	N00°50'22"W	5.71'
52	R=1.50' Δ=90°00'00" L=2.36'	
53	N89°09'38"E	1.39'
54	S89°09'38"W	3.00'
55	R=1.50' Δ=90°00'00" L=2.36'	
56	R=4.50' Δ=90°00'00" L=7.07'	
57	R=2.60' Δ=90°00'00" L=4.08'	
58	S00°50'22"E	3.68'
59	N00°50'22"W	2.72'
60	R=3.60' Δ=14°30'20" L=7.19'	
61	S66°20'02"E	1.92'
62	R=10.00' Δ=65°29'40" L=11.43'	

LEGEND

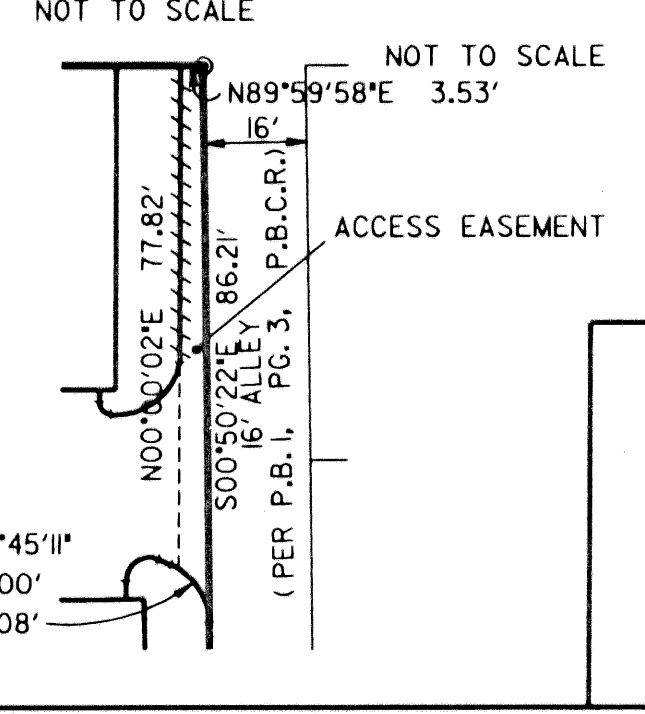
- A or L ARC LENGTH
- C CENTERLINE
- Δ CENTRAL ANGLE
- FDOT FLORIDA DEPARTMENT OF TRANSPORTATION
- FPL FLORIDA POWER & LIGHT
- FND. FOUND
- K & A KEITH AND ASSOCIATES
- L.A.E. LIMITED ACCESS EASEMENT
- LB. LICENSED BUSINESS
- O.R.B. OFFICIAL RECORD BOOK
- P.B. PLAT BOOK
- P.G. PAGE
- P.C.P. PERMANENT CONTROL POINT
- P.S.M. PROFESSIONAL SURVEYOR MAPPER
- P.O.B. POINT OF BEGINNING
- P.O.C. POINT OF COMMENCEMENT
- P.R.M. PERMANENT REFERENCE MONUMENT
- P.B.C.R. PALM BEACH COUNTY RECORDS
- RGE. RANGE
- R/W RIGHT OF WAY
- R RADIUS
- UE UTILITY EASEMENT
- SEC. SECTION
- S.F. and/or SQ. FT. SQUARE FEET
- TWP. TOWNSHIP
- TYP. TYPICAL
- U.E. UTILITY EASEMENT
- W WITH
- DE DRAINAGE EASEMENT
- ⊙ 4"x4" CONCRETE MONUMENT W/ BRASS DISC STAMPED "PRM LS NO. 4323" UNLESS NOTED OTHERWISE
- ⊙ LINE TABLE IDENTIFICATION
- ⊕ SECTION CORNER
- NON-VEHICULAR ACCESS LINE ((NVAL))



SIGHT TRIANGLE AREA DETAILS



ACCESS EASEMENT DETAIL



PREPARED BY:

KEITH & ASSOCIATES, INC.
consulting engineers

301 EAST ATLANTIC BOULEVARD
POMPANO BEACH, FLORIDA 33060-6643
(954) 788-3400 FAX (954) 788-3500
mall@keith-associates.com LB NO. 6860