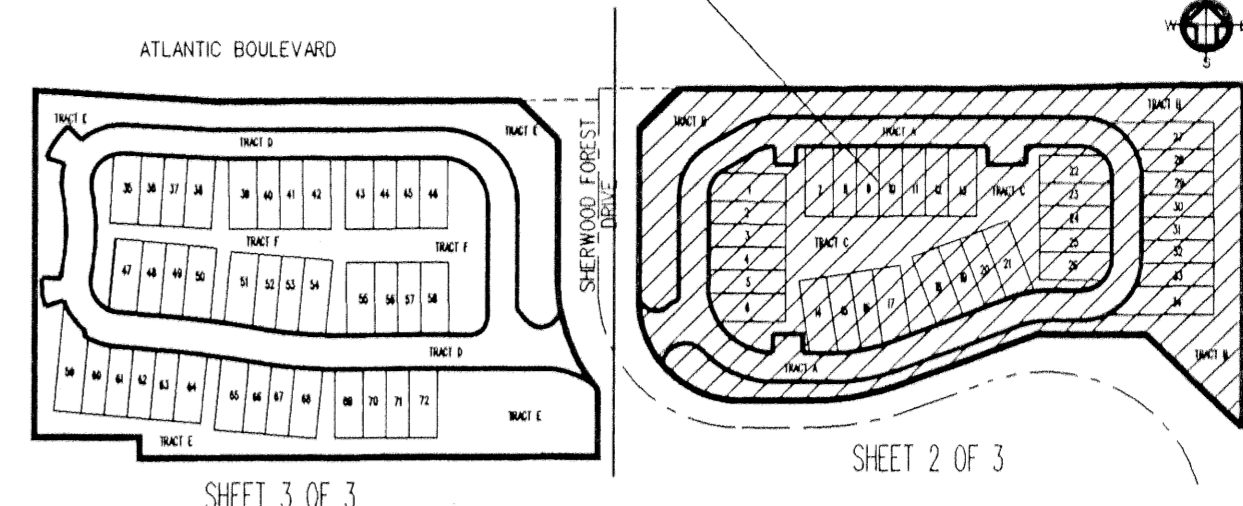


# LEGACY

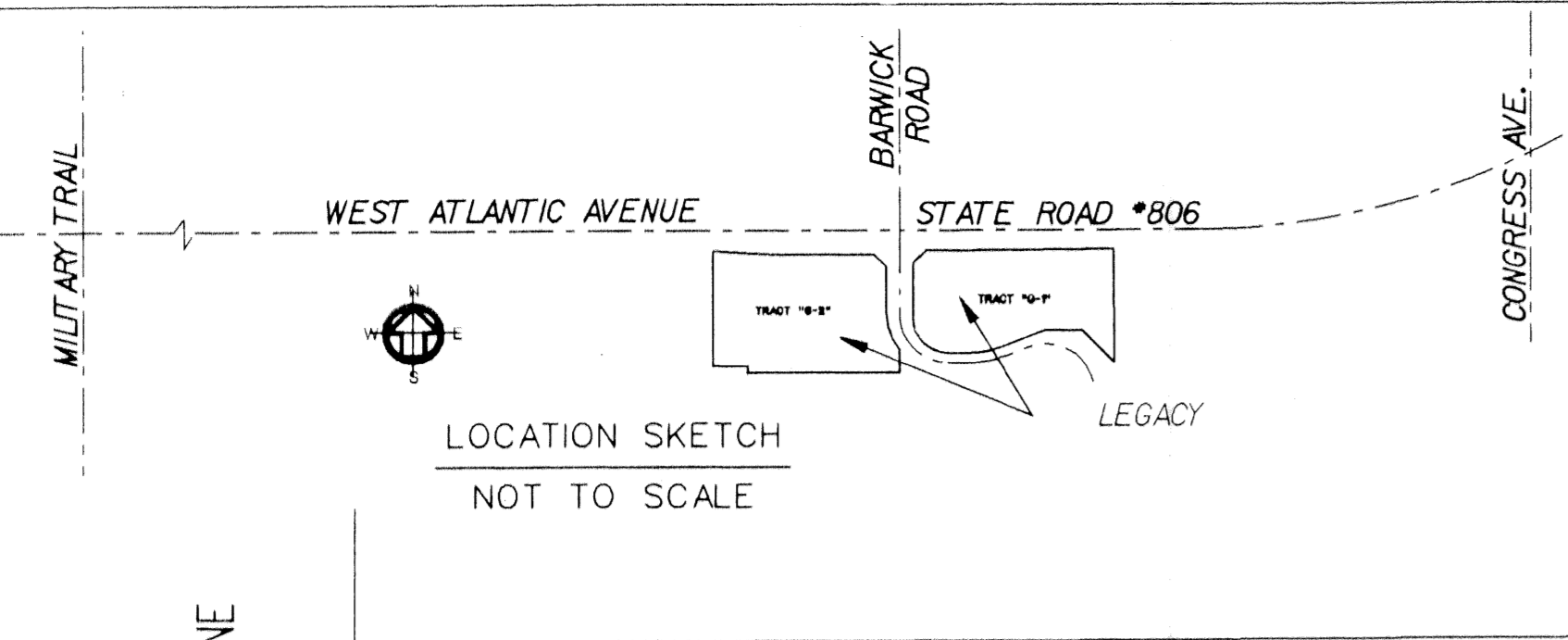
REPLAT OF TRACT "G-1" AND TRACT "G-2",  
 SHERWOOD FOREST PLAT NO. 1 (P.B. 62, PG. 163-168, P.B.C.R.)  
 A PORTION OF  
 SECTION 13, TOWNSHIP 46 SOUTH, RANGE 42 EAST  
 PALM BEACH COUNTY, FLORIDA

THIS INSTRUMENT PREPARED BY SCOTT A. GUZZI  
 SCOTT A. GUZZI & ASSOCIATES, INC. - SURVEYORS AND MAPPERS  
 6041 KIMBERLY BOULEVARD, SUITE H, NORTH LAUDERDALE, FLORIDA, 33068

THIS SKETCH



INDEX MAP  
NOT TO SCALE

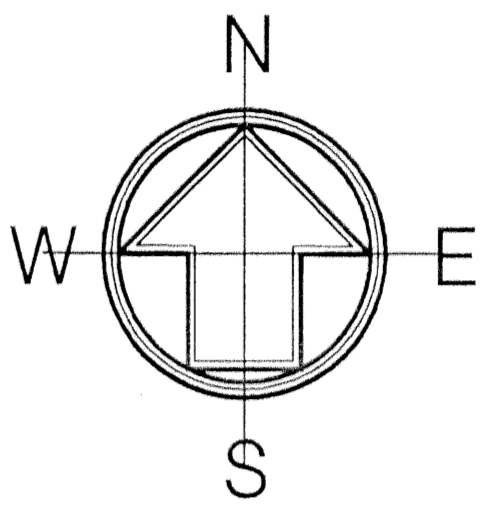
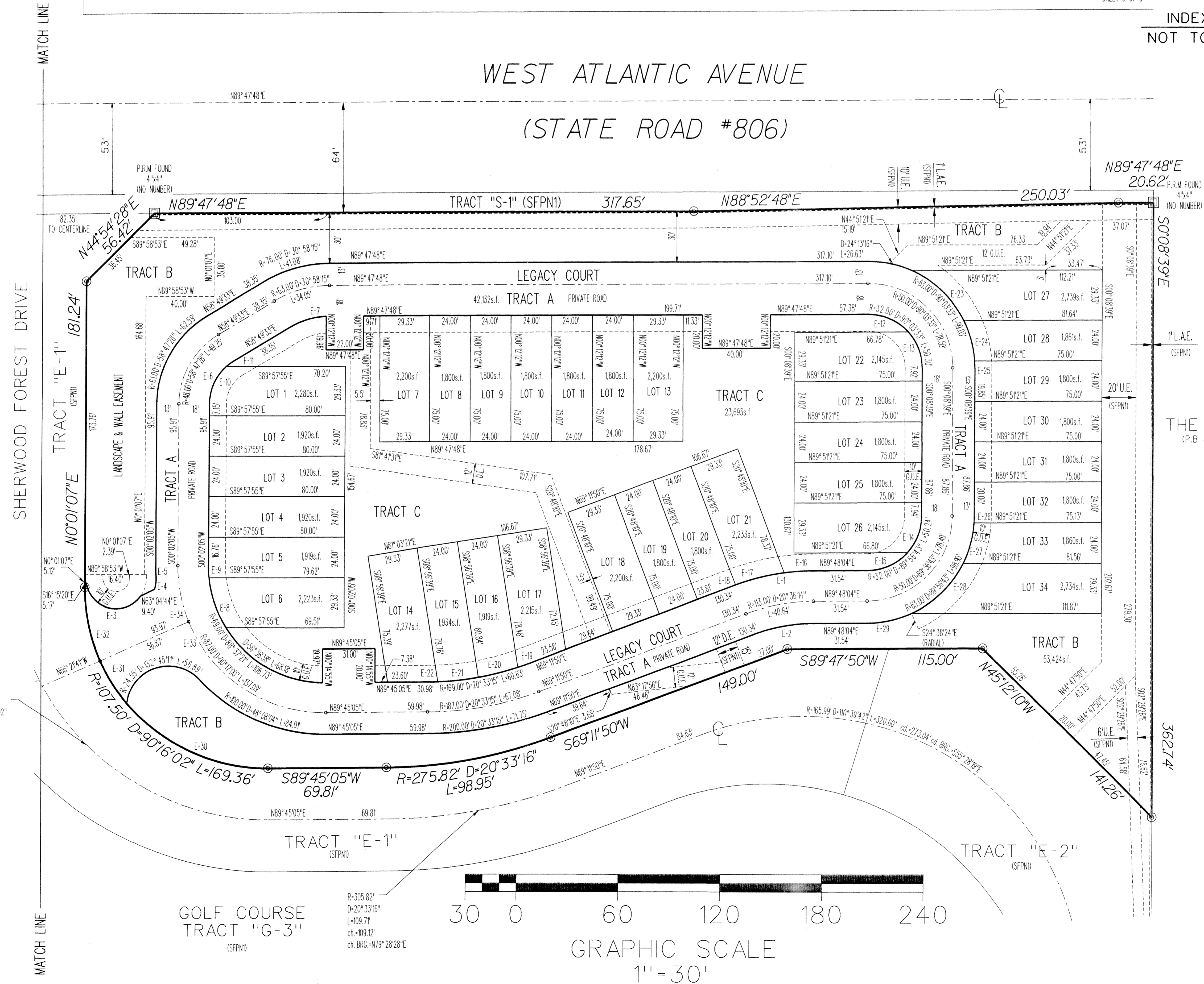


LOCATION SKETCH  
NOT TO SCALE

STATE OF FLORIDA  
 COUNTY OF PALM BEACH  
 THIS PLAT WAS FILED FOR RECORD  
 AT \_\_\_\_\_ M. THIS DAY  
 OF \_\_\_\_\_ 20\_\_\_\_ AND DULY  
 RECORDED IN PLAT BOOK NO. \_\_\_\_\_  
 ON PAGE(S) \_\_\_\_\_  
 DOROTHY H. WILKEN, CLERK OF THE  
 CIRCUIT COURT  
 BY: \_\_\_\_\_ D.C.

SHEET 2 OF 3

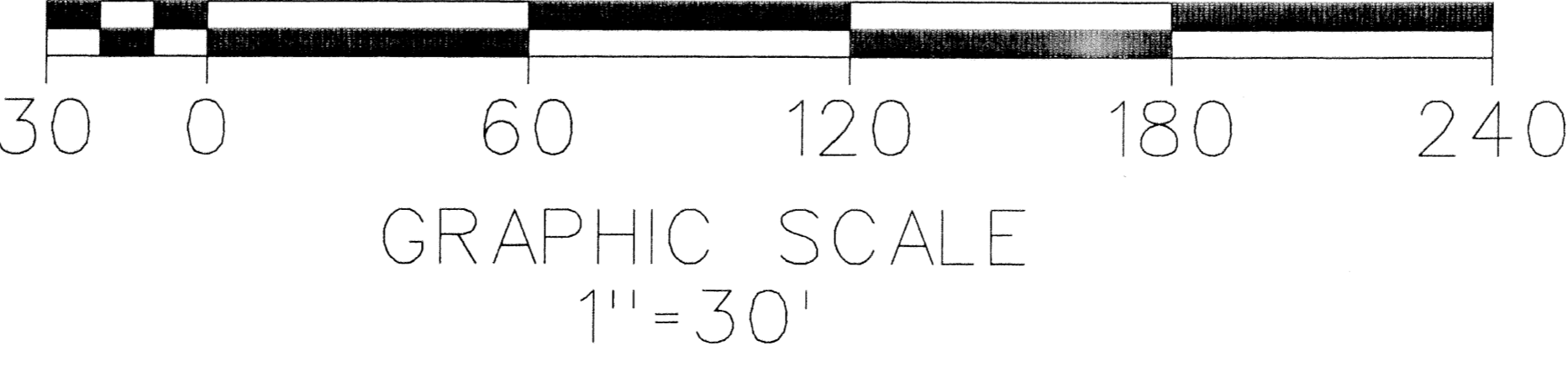
WEST ATLANTIC AVENUE  
 (STATE ROAD #806)



- ABBREVIATIONS:
- B.M. • BENCHMARK
  - C • CALCULATED
  - D • DELTA, OR CENTRAL ANGLE
  - D.E. • DRAINAGE EASEMENT
  - F.S. • FLORIDA STATUTES
  - INC. • INCORPORATED
  - L • LENGTH
  - L.A.E. • LIMITED ACCESS EASEMENT
  - O.R.B. • OFFICIAL RECORDS BOOK
  - P.B. • PLAT BOOK
  - P.B.C.R. • PALM BEACH COUNTY RECORDS
  - PG. • PAGE
  - R • RADIUS
  - P.R.M. • PERMANENT REFERENCE MONUMENT
  - R/W • RIGHT OF WAY
  - (SFPND) • PER SHERWOOD FOREST PLAT NO. 1 (PLAT BOOK 62, PAGES 163-168)
  - S.E. • SEWER EASEMENT
  - G.U.E. • GENERAL UTILITY EASEMENT

### CURVE TABLE:

CURVE	RADIUS	DELTA	LENGTH	TANGENT	CHORD
E-1	131.00'	20°26'14"	47.11'	23.81'	46.86'
E-2	100.00'	20°36'14"	35.96'	18.18'	35.77'
E-3	17.69'	127°04'13"	39.23'	35.54'	31.67'
E-4	23.43'	19°06'53"	7.82'	3.95'	7.78'
E-5	100.00'	3°31'54"	6.15'	3.08'	6.15'
E-6	30.00'	58°47'28"	30.78'	16.90'	29.45'
E-7	45.00'	28°26'57"	22.34'	11.41'	22.12'
E-8	68.00'	25°58'59"	31.29'	15.92'	31.02'
E-9	68.00'	6°01'33"	7.26'	3.63'	7.25'
E-10	30.00'	47°40'26"	24.96'	13.25'	24.25'
E-11	30.00'	1°07'07"	5.82'	2.92'	5.81'
E-12	32.00'	48°02'48"	26.83'	14.26'	26.06'
E-13	32.00'	42°00'45"	23.46'	12.29'	22.94'
E-14	32.00'	47°57'12"	23.43'	12.27'	22.91'
E-15	32.00'	47°59'37"	26.80'	14.25'	26.03'
E-16	131.00'	7°34'38"	17.32'	8.68'	17.31'
E-17	131.00'	12°56'30"	29.59'	14.86'	29.53'
E-18	113.00'	00°05'07"	0.17'	0.08'	0.17'
E-19	169.00'	2°09'52"	6.38'	3.19'	6.38'
E-20	169.00'	8°10'58"	24.94'	12.09'	24.12'
E-21	169.00'	8°09'06"	24.04'	12.04'	24.02'
E-22	169.00'	2°03'19"	6.06'	3.03'	6.06'
E-23	63.00'	39°18'02"	43.21'	22.50'	42.37'
E-24	63.00'	22°46'16"	25.04'	12.69'	24.87'
E-25	63.00'	3°45'59"	4.94'	2.47'	4.94'
E-26	63.00'	3°38'13"	4.00'	2.00'	4.00'
E-27	63.00'	22°44'50"	25.01'	12.67'	24.85'
E-28	63.00'	39°07'13"	43.02'	22.38'	42.18'
E-29	63.00'	24°26'27"	26.87'	13.65'	26.67'
E-30	107.50'	50°33'07"	94.85'	50.76'	91.80'
E-31	107.50'	16°03'29"	30.13'	15.16'	30.03'
E-32	107.50'	23°39'26"	44.39'	22.51'	44.07'
E-33	87.00'	67°58'55"	103.23'	58.66'	97.28'
E-34	87.00'	22°18'05"	33.86'	17.15'	33.65'



SCOTT A. GUZZI & ASSOC., INC.  
 Surveyors and Mappers  
 6041 KIMBERLY BOULEVARD  
 SUITE H  
 NORTH LAUDERDALE, FLORIDA 33068

## LEGACY