

COPART

140

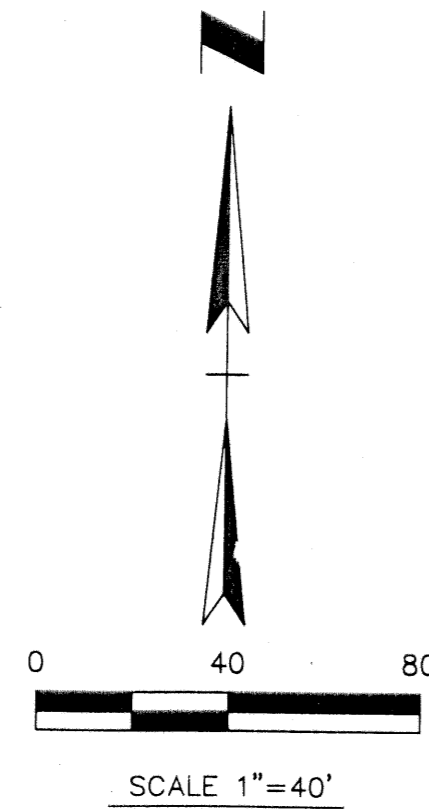
Being a replat of a portion of Tract 6, Block 6 of the Plat of Palm Beach Farms Company Plat No. 3 as recorded in Plat Book 2, Pages 45 through 54, inclusive, of the Public Records of Palm Beach County, Florida Lying in Section 32, Township 43 South, Range 42 East, Palm Beach County, Florida

SHEET 2 OF 2
OCTOBER 2002

CL BELVEDERE ROAD
120' RIGHT OF WAY
(ROAD PLAT BOOK 4, PAGE 96)

PALM BEACH COUNTY
HORIZONTAL CONTROL POINT
"PBF - 9"
N 857976.59
E 925764.85

S88°44'23"W 677.57'



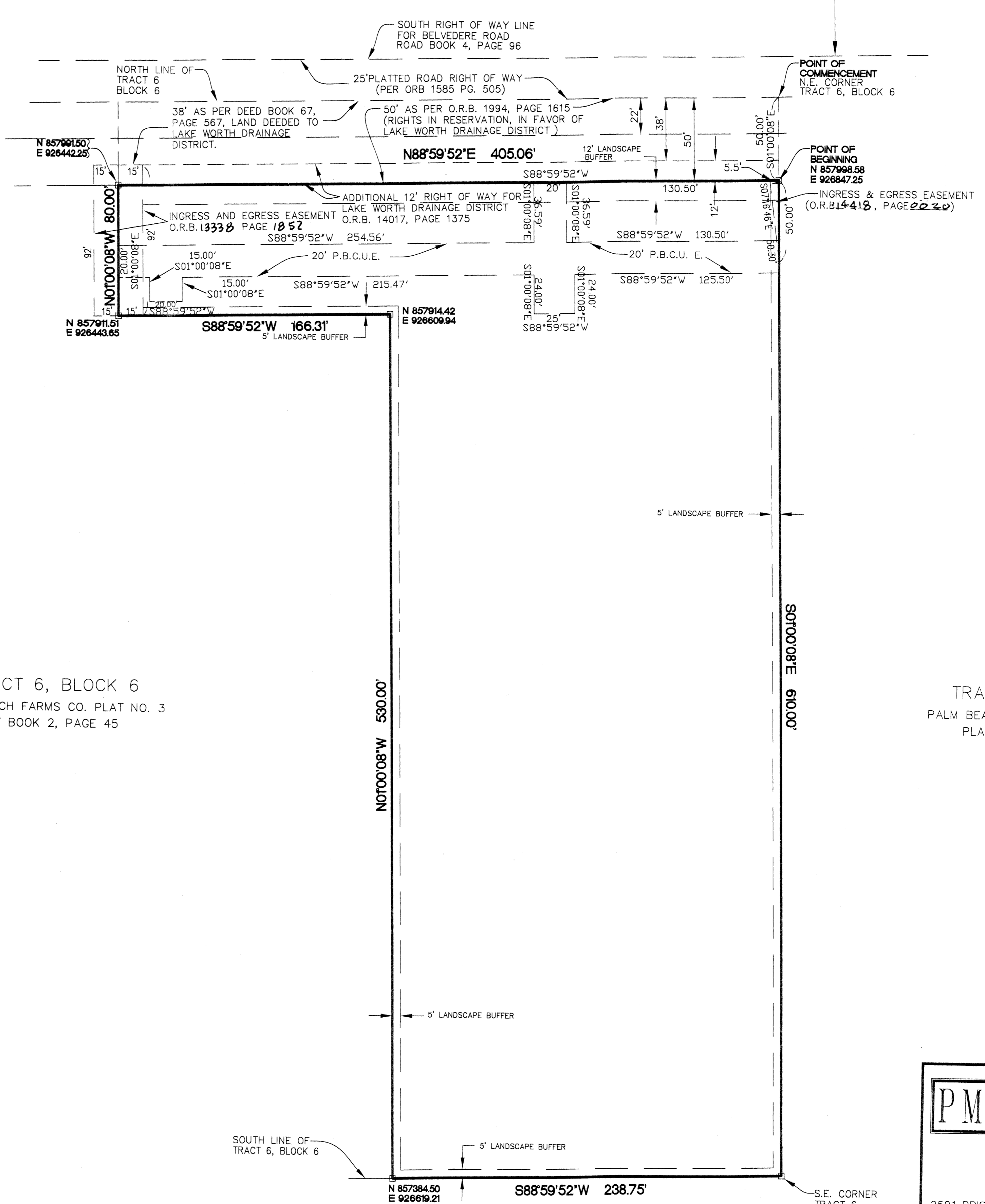
S90°07'25"E 4802.23'
BEARING BASE

TRACT 6, BLOCK 6
PALM BEACH FARMS CO. PLAT NO. 3
PLAT BOOK 2, PAGE 45

TRACT 5, BLOCK 6
PALM BEACH FARMS CO. PLAT NO. 3
PLAT BOOK 2, PAGE 45

PALM BEACH COUNTY
HORIZONTAL CONTROL POINT
"SOUTHERN 8 - F"
N 853374.54
E 925803.57

SUBDIVISION **COPART**
BOOK **96** PAGE **140**
FLOOD ZONE **B** FLOOD MAP # **150A**
QUAD # **40** ZONING **IL**
SE ZIP CODE **33411**
TAZ **B75**
PUD NAME



FLORIDA CERTIFICATE NO. 6788

PM SURVEYING, INC.

PETER J. MOSCHETTO, P.S.M.
PRESIDENT

2501 BRISTOL DRIVE
SUITE A-9
WEST PALM BEACH, FL. 33409-6458

OFFICE: (561) 478-7764
FAX: (561) 478-1094

COPYRIGHT © 2002, BY PM SURVEYING, INC.