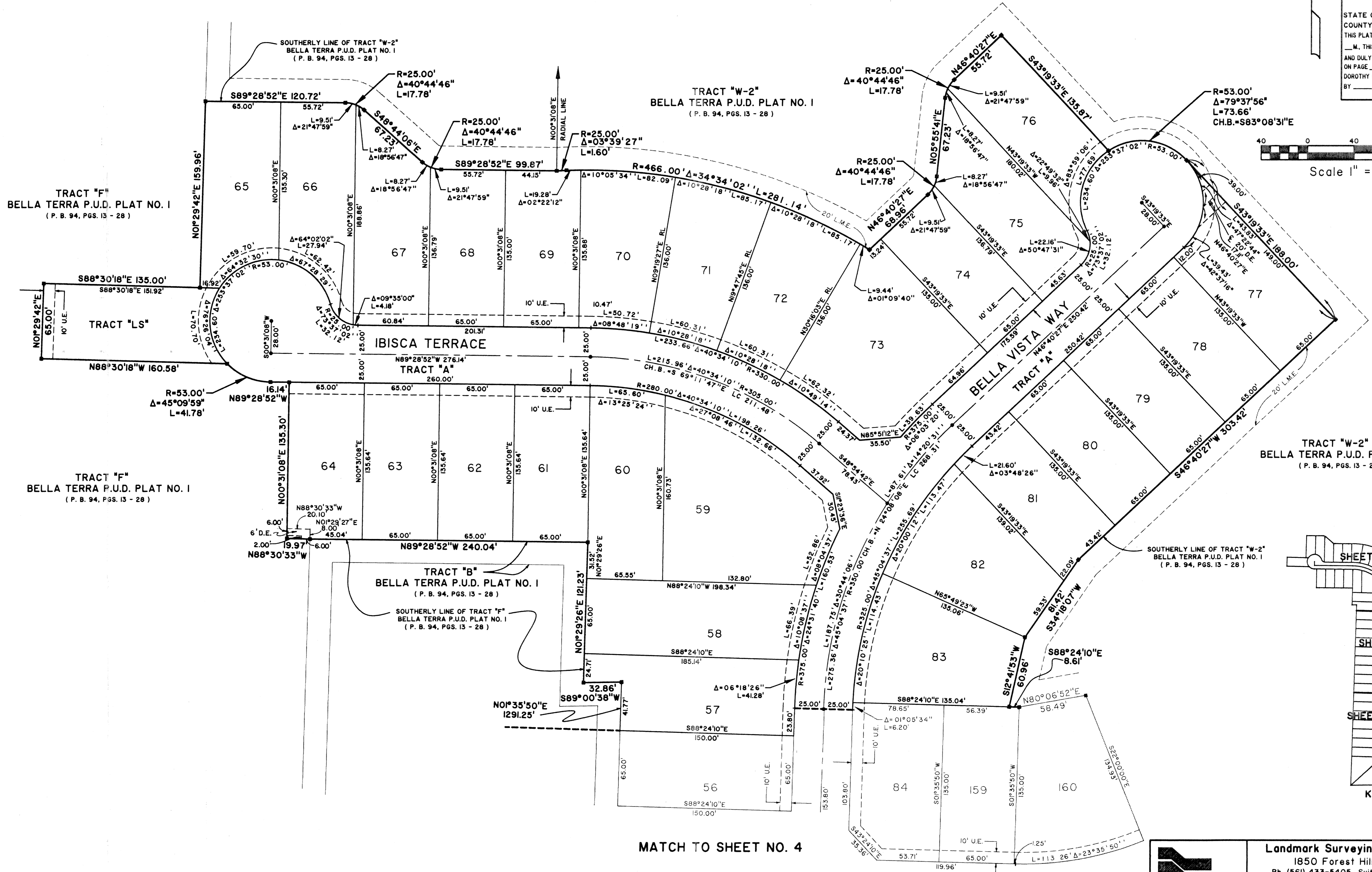
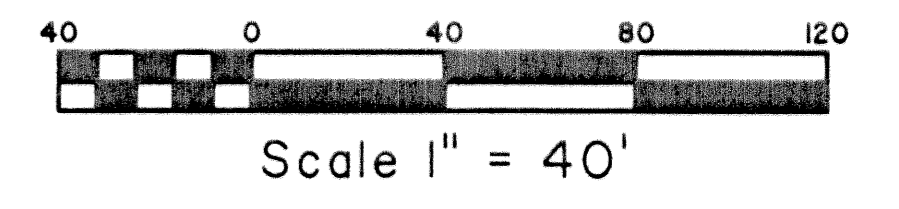


BELLA TERRA P.U.D. PLAT NO. 3

BEING A REPLAT OF A PORTION OF TRACT "F",
 BELLA TERRA P.U.D. PLAT I, AS RECORDED IN PLAT BOOK 94, PAGES 13 THROUGH 28,
 PUBLIC RECORDS OF PALM BEACH COUNTY, FLORIDA AND LYING IN SECTION 36, TOWNSHIP 43 SOUTH
 RANGE 41 EAST, VILLAGE OF ROYAL PALM BEACH, PALM BEACH COUNTY, FLORIDA.
 SEPTEMBER, 2002 SHEET 5 OF 5

STATE OF FLORIDA SS
 COUNTY OF PALM BEACH
 THIS PLAT WAS FILED FOR RECORD AT _____
 ON _____, THIS _____ DAY OF _____ 2002
 AND DULY RECORDED IN PLAT BOOK NO. _____
 ON PAGE _____
 DOROTHY H. WILKEN, CLERK OF THE CIRCUIT COURT
 BY _____ D.C.



TRACT "F"
 BELLA TERRA P.U.D. PLAT NO. I
 (P. B. 94, PGS. 13 - 28)

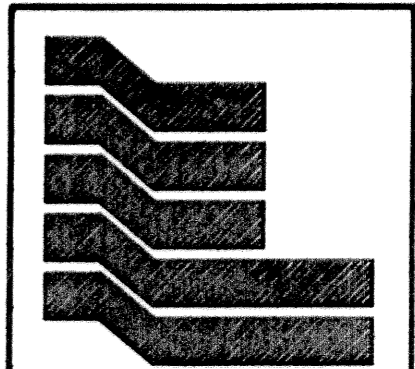
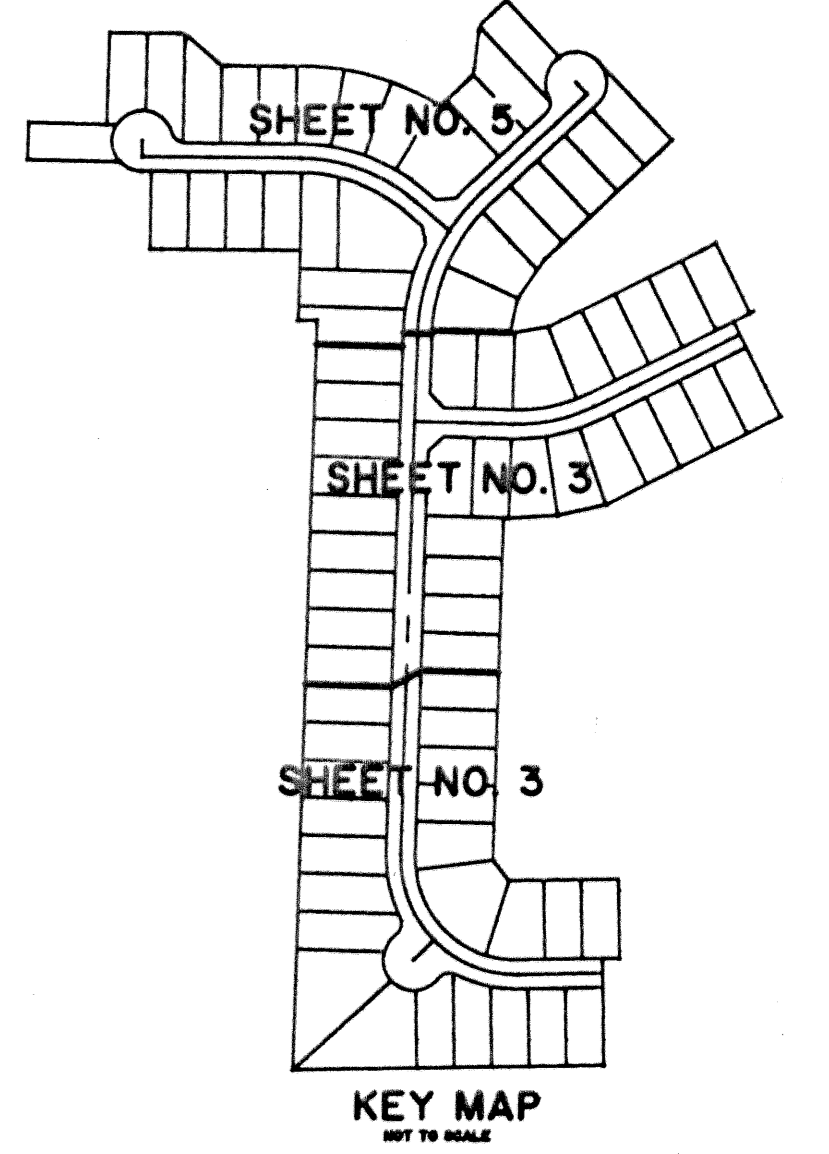
TRACT "W-2"
 BELLA TERRA P.U.D. PLAT NO. I
 (P. B. 94, PGS. 13 - 28)

TRACT "W-2"
 BELLA TERRA P.U.D. PLAT NO. I
 (P. B. 94, PGS. 13 - 28)

TRACT "F"
 BELLA TERRA P.U.D. PLAT NO. I
 (P. B. 94, PGS. 13 - 28)

TRACT "B"
 BELLA TERRA P.U.D. PLAT NO. I
 (P. B. 94, PGS. 13 - 28)

MATCH TO SHEET NO. 4



Landmark Surveying & Mapping Inc.
 1850 Forest Hill Boulevard
 Ph. (561) 433-5405 Suite 100 W.P.B. Florida
 LB # 4396

BELLA TERRA P.U.D. PLAT NO. 3