

PALM BEACH THOROUGHbred TRAINING FARM

A PLAT OF A PORTION OF SECTIONS 17, 18, 19 AND 20, TOWNSHIP 45 SOUTH, RANGE 42 EAST AND ALSO BEING A REPLAT OF ALL OF TRACTS 56 THROUGH 69, 72 THROUGH 85, 88 THROUGH 101 AND 104 THROUGH 117, BLOCK 46, ALL OF TRACTS 2 THROUGH 15 AND 18 THROUGH 31, BLOCK 50, A PORTION OF TRACTS 55, 70, 71, 86, 87, 102, 103 AND 118, BLOCK 46, A PORTION OF TRACTS 1, 16, 17 AND 32, BLOCK 50 AND A PORTION OF THE ROAD, DYKE AND DITCH RESERVATIONS, (HEREINAFTER REFERRED TO AS RIGHT-OF-WAY) LYING IN AND BORDERING BLOCKS 46 AND 50, ALL OF THE PALM BEACH FARMS COMPANY PLAT NO. 3, ACCORDING TO THE PLAT THEREOF AS RECORDED IN PLAT BOOK 2, PAGES 45 THROUGH 54 OF THE PUBLIC RECORDS OF PALM BEACH COUNTY, FLORIDA

PALM BEACH COUNTY, FLORIDA

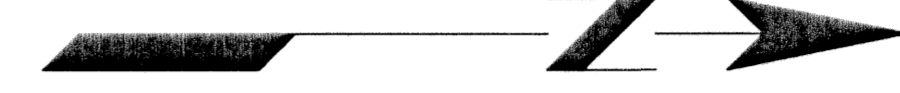
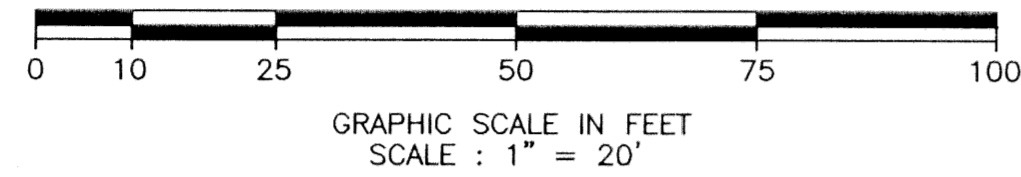
THIS INSTRUMENT WAS PREPARED BY :
 FREDERICK M. LEHMAN IN THE OFFICES OF
 JOHN A. GRANT, JR., INC.
 CONSULTING ENGINEERS AND LAND SURVEYORS
 3333 NORTH FEDERAL HIGHWAY
 BOCA RATON, FLORIDA 33431
 PHONE NUMBER : (561) 395-3333
 FAX NUMBER : (561) 395-3315
 LICENSED BUSINESS NO. : LB-50

JOHN A. GRANT, JR., INC.

CONSULTING ENGINEERS AND LAND SURVEYORS

BOCA RATON, FLORIDA

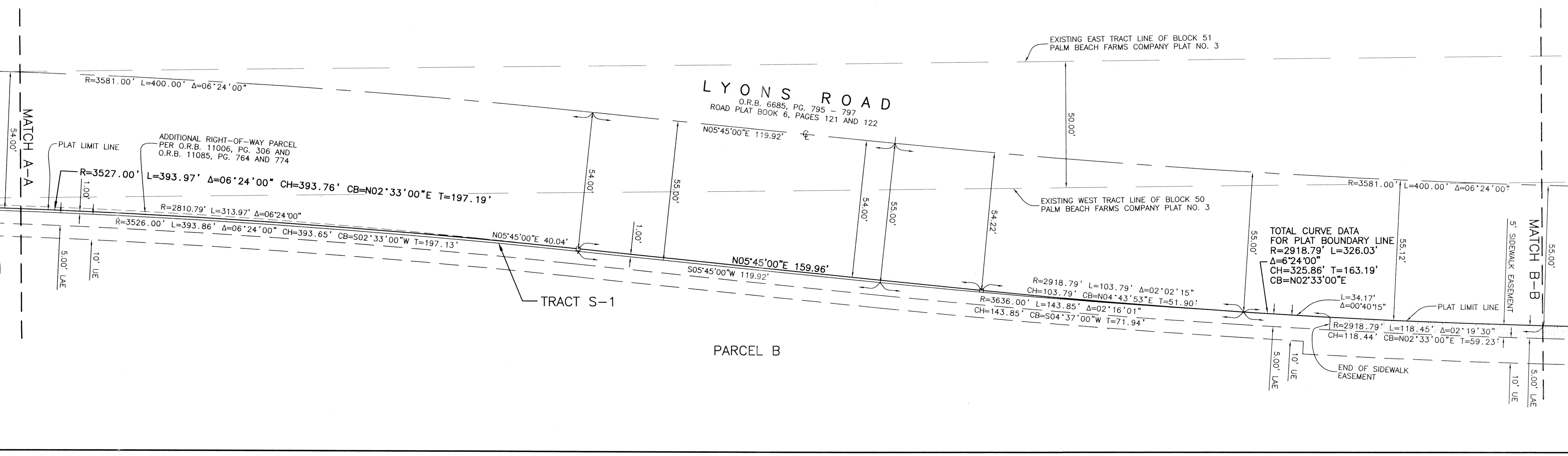
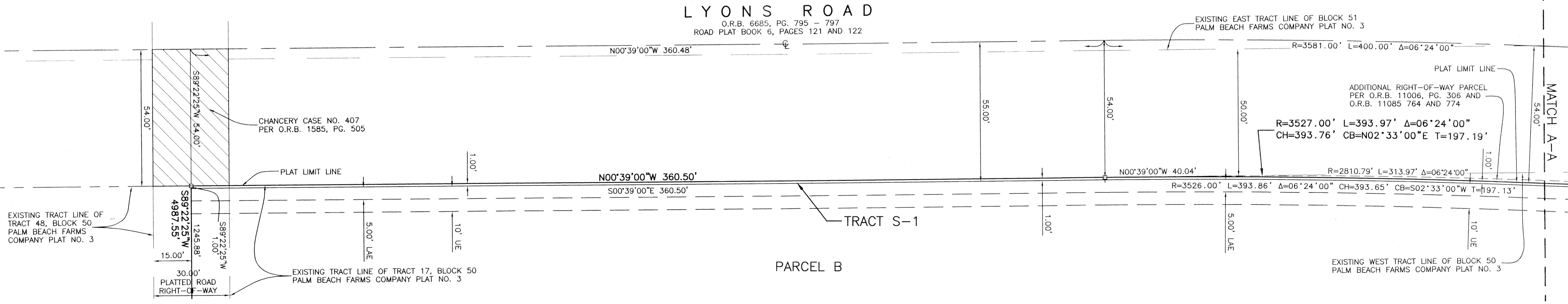
SHEET 5 OF 8
 AUGUST 2001



NOTE :
 SEE SHEET 3 OF 8 FOR PLAT NOTES.
 SEE SHEET 3 OF 8 FOR LEGEND.

STATE OF FLORIDA
 COUNTY OF PALM BEACH
 THIS PLAT WAS FILED FOR
 RECORD AT _____ M.
 THIS _____ DAY OF
 _____ A.D. 2002 AND DULY
 RECORDED IN PLAT BOOK
 _____ ON PAGES _____
 AND _____
 DOROTHY H. WILKEN
 CLERK CIRCUIT COURT
 BY : _____
 DEPUTY CLERK

169



SUBDIVISION: FB THOROUGHbred TRAINING FARM
 BOOK: 96
 FLOOD MAP: 1654
 QUAD: 49
 ZONING: AR
 SV: 33437
 TAG: 1030
 PUD NAME:
 REVISED DATE: JANUARY 16, 2002
 REVISED DATE: JANUARY 9, 2002
 REVISED DATE: NOVEMBER 28, 2001
 DATE: SEPTEMBER 21, 2001
 JOB NUMBER: JG-100-8600
 FILE NAME: \\JAG7\CADD2\UG8600\RECORD PLAT\RECORD PLAT.DWG
 LUR