

# PALM BEACH THOROUGHBRED TRAINING FARM

A PLAT OF A PORTION OF SECTIONS 17, 18, 19 AND 20, TOWNSHIP 45 SOUTH, RANGE 42 EAST AND ALSO BEING A REPLAT OF ALL OF TRACTS 56 THROUGH 69, 72 THROUGH 85, 88 THROUGH 101 AND 104 THROUGH 117, BLOCK 46, ALL OF TRACTS 2 THROUGH 15 AND 18 THROUGH 31, BLOCK 50, A PORTION OF TRACTS 55, 70, 71, 86, 87, 102, 103 AND 118, BLOCK 46, A PORTION OF TRACTS 1, 16, 17 AND 32, BLOCK 50 AND A PORTION OF THE ROAD, DYKE AND DITCH RESERVATIONS, (HEREINAFTER REFERRED TO AS RIGHT-OF-WAY) LYING IN AND BORDERING BLOCKS 46 AND 50, ALL OF THE PALM BEACH FARMS COMPANY PLAT NO. 3, ACCORDING TO THE PLAT THEREOF AS RECORDED IN PLAT BOOK 2, PAGES 45 THROUGH 54 OF THE PUBLIC RECORDS OF PALM BEACH COUNTY, FLORIDA

PALM BEACH COUNTY, FLORIDA

THIS INSTRUMENT WAS PREPARED BY :  
 FREDERICK M. LEHMAN IN THE OFFICES OF  
 JOHN A. GRANT, JR., INC.  
 CONSULTING ENGINEERS AND LAND SURVEYORS  
 3333 NORTH FEDERAL HIGHWAY  
 BOCA RATON, FLORIDA 33431  
 PHONE NUMBER : (561) 395-3333  
 FAX NUMBER : (561) 395-3315  
 LICENSED BUSINESS NO. : LB-50

JOHN A. GRANT, JR., INC.

CONSULTING ENGINEERS AND LAND SURVEYORS

BOCA RATON, FLORIDA

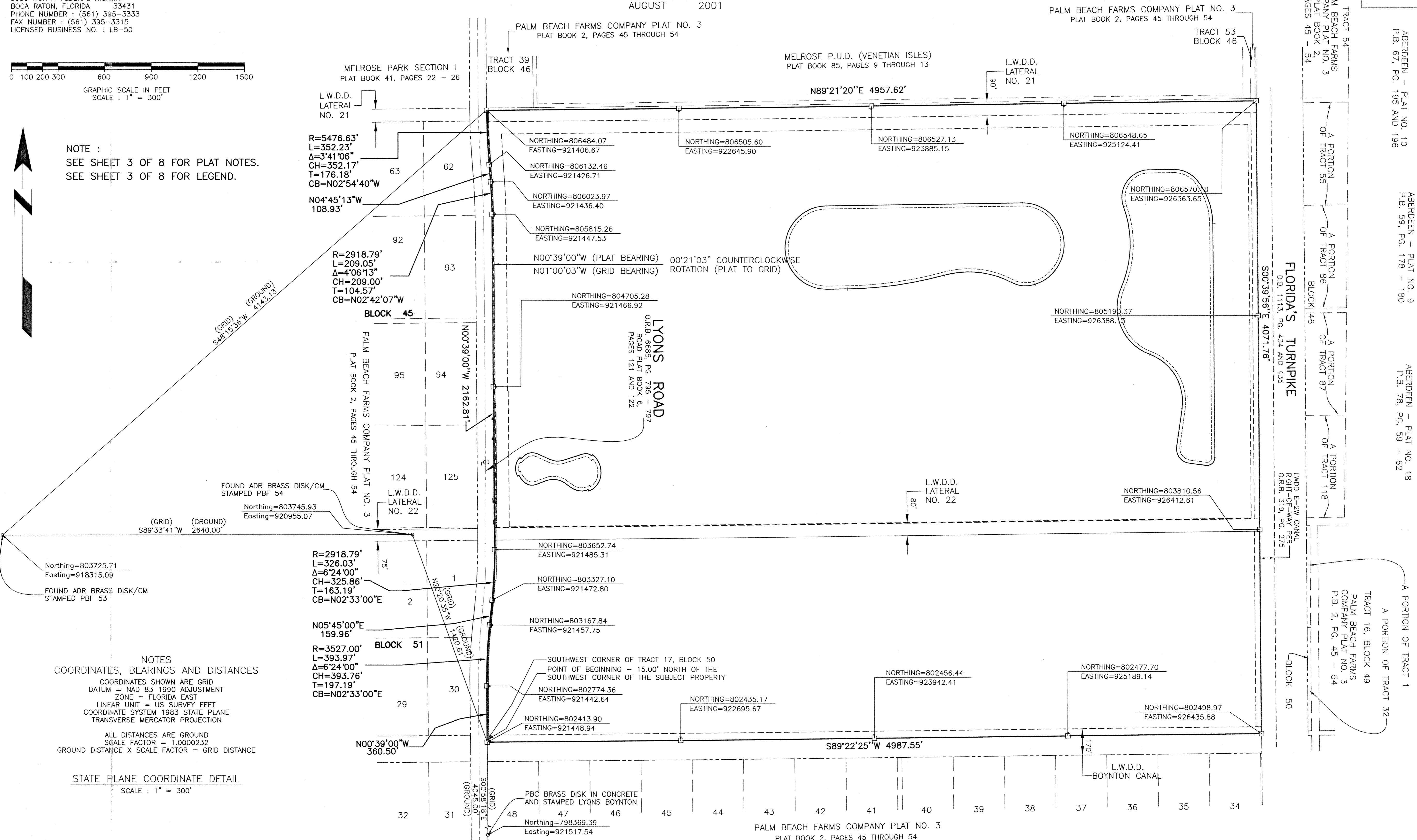
SHEET 8 OF 8

AUGUST 2001



GRAPHIC SCALE IN FEET  
 SCALE : 1" = 300'

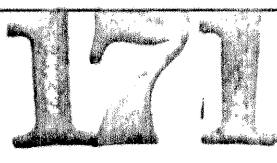
NOTE :  
 SEE SHEET 3 OF 8 FOR PLAT NOTES.  
 SEE SHEET 3 OF 8 FOR LEGEND.



NOTES  
 COORDINATES, BEARINGS AND DISTANCES  
 COORDINATES SHOWN ARE GRID  
 DATUM = NAD 83 1990 ADJUSTMENT  
 ZONE = FLORIDA EAST  
 LINEAR UNIT = US SURVEY FEET  
 COORDINATE SYSTEM 1983 STATE PLANE  
 TRANSVERSE MERCATOR PROJECTION  
 ALL DISTANCES ARE GROUND  
 SCALE FACTOR = 1.0000232  
 GROUND DISTANCE X SCALE FACTOR = GRID DISTANCE

STATE PLANE COORDINATE DETAIL  
 SCALE : 1" = 300'

STATE OF FLORIDA  
 COUNTY OF PALM BEACH  
 THIS PLAT WAS FILED FOR  
 RECORD AT \_\_\_\_\_ .M.  
 THIS \_\_\_\_\_ DAY OF \_\_\_\_\_  
 A. D. 2002 AND DULY  
 RECORDED IN PLAT BOOK  
 \_\_\_\_\_ ON PAGES \_\_\_\_\_  
 AND \_\_\_\_\_  
 DOROTHY H. WILKEN  
 CLERK CIRCUIT COURT  
 BY : \_\_\_\_\_  
 DEPUTY CLERK



ABERDEEN - PLAT NO. 10  
 P.B. 67, PG. 196 AND 196  
 ABERDEEN - PLAT NO. 9  
 P.B. 59, PG. 178 - 180  
 ABERDEEN - PLAT NO. 18  
 P.B. 78, PG. 59 - 62

SUBMITTER: PB THOROUGHBRED TRAINING  
 PAGE: 11  
 FLOOD ZONE: 185A  
 ZONING: AR  
 ROAD # 49  
 ZIP CODE: 33437  
 TAZ: 1030  
 PUD NAME:

REVISION DATE: MAY 16, 2002, CMT: [unclear]  
 REVISION DATE: JANUARY 9, 2002  
 REVISION DATE: NOVEMBER 28, 2001  
 DATE: SEPTEMBER 21, 2001  
 JOB NUMBER: JG-100-8600  
 FILE NAME: \\JAG7\CADD2\JG8600\RECORD PLAT\RECORD PLAT.DWG  
 LUR