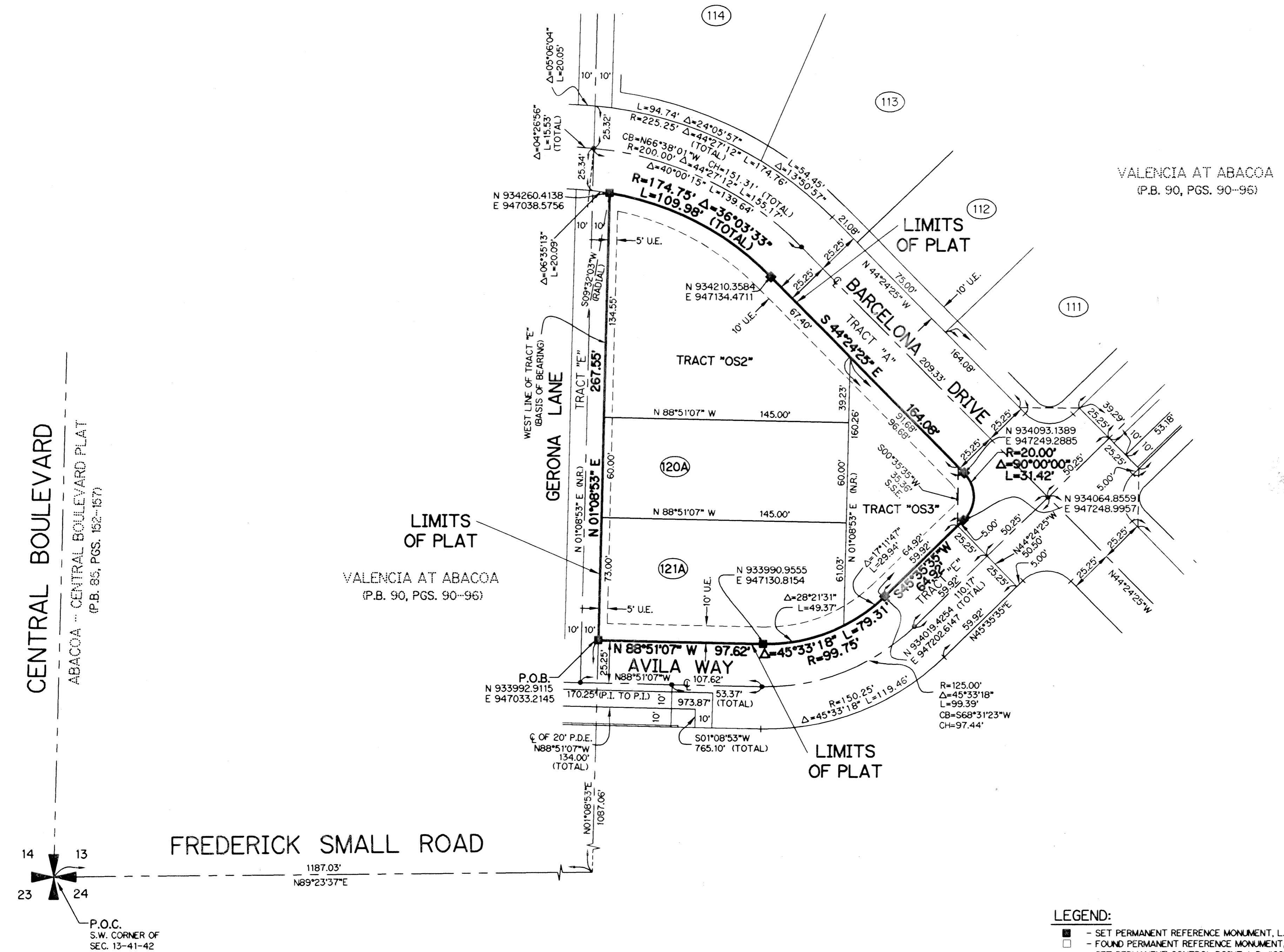
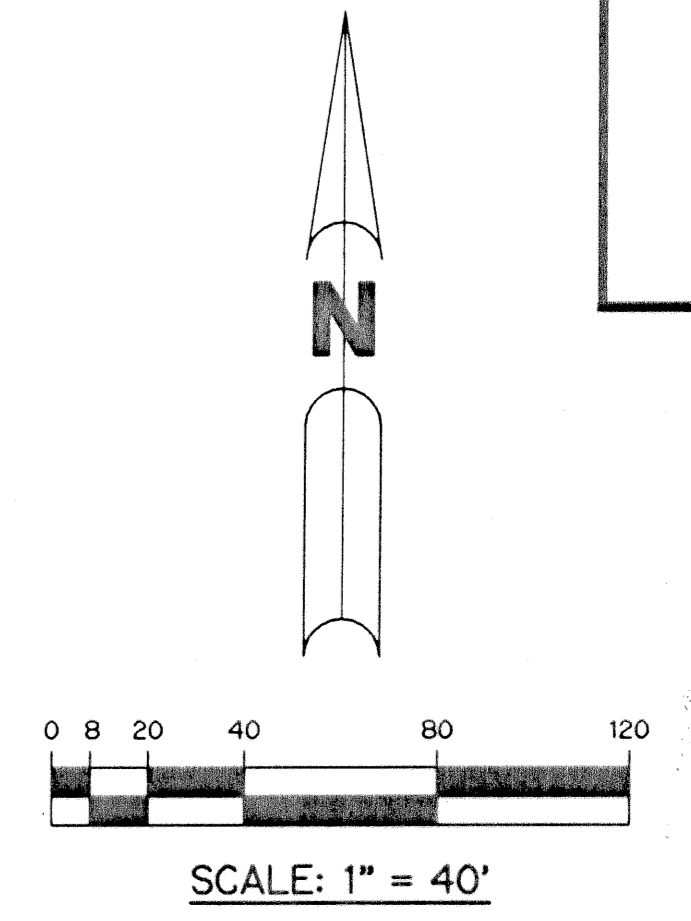


VALENCIA AT ABACOA - PHASE 1 REPLAT

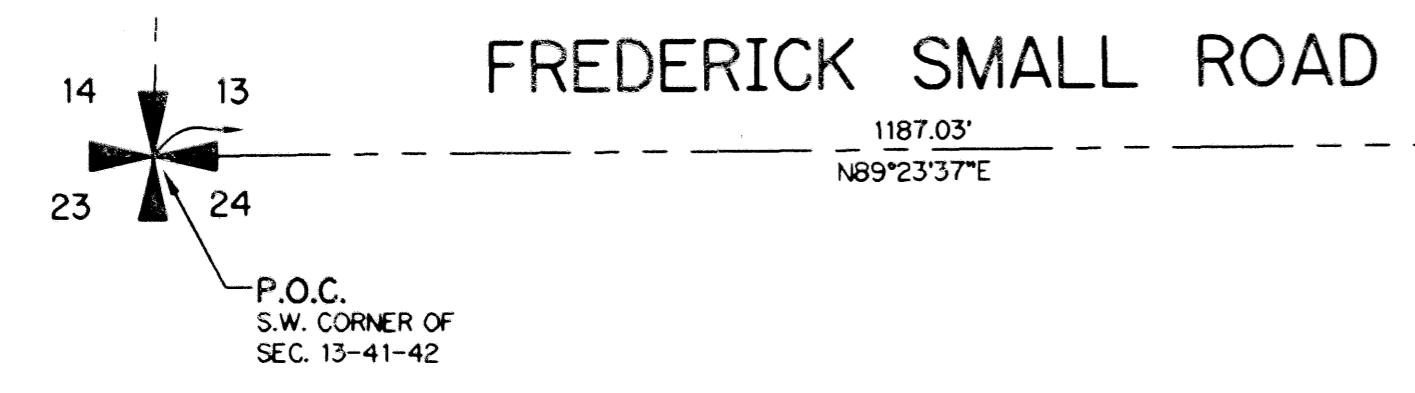
BEING A REPLAT OF LOTS 120, 121 AND TRACTS OS2 AND OS3, VALENCIA AT ABACOA - PHASE I
 AS RECORDED IN PLAT BOOK 90 AT PAGES 90 THROUGH 96 OF THE PUBLIC RECORDS OF PALM BEACH COUNTY, FLORIDA,
 LYING IN SECTION 13, TOWNSHIP 41 SOUTH, RANGE 42 EAST
 TOWN OF JUPITER, PALM BEACH COUNTY, FLORIDA
 SHEET 2 OF 2 JUNE, 2002



CENTRAL BOULEVARD
 ABACOA - CENTRAL BOULEVARD PLAT
 (P.B. 85, PGS. 152-157)

LIMITS OF PLAT
 VALENCIA AT ABACOA
 (P.B. 90, PGS. 90-96)

VALENCIA AT ABACOA
 (P.B. 90, PGS. 90-96)



- LEGEND:**
- - SET PERMANENT REFERENCE MONUMENT, L.B. #6674
 - - FOUND PERMANENT REFERENCE MONUMENT, L.B. #6674
 - - SET PERMANENT CONTROL POINT, L.B. #6674
 - - FOUND PERMANENT CONTROL POINT, L.B. #6674
 - Δ - DELTA ANGLE
 - B.E. - BUFFER EASEMENT
 - CB - CHORD BEARING
 - CH - CHORD DISTANCE
 - CL - CENTERLINE
 - D.B. - DEED BOOK
 - D.E. - DRAINAGE EASEMENT
 - L - ARC LENGTH
 - L.A.E. - LIMITED ACCESS EASEMENT
 - L.M.A.E. - LAKE MAINTENANCE ACCESS EASEMENT
 - L.M.E. - LAKE MAINTENANCE EASEMENT
 - NPBCID - NORTHERN PALM BEACH COUNTY IMPROVEMENT DISTRICT
 - NR. - NOT RADIAL
 - N.T.S. - NOT TO SCALE
 - O.R.B. - OFFICIAL RECORD BOOK
 - P.B. - PLAT BOOK
 - PGS. - PAGES
 - P.C.C. - POINT OF COMPOUND CURVATURE
 - P.C. - POINT OF CURVATURE
 - P.E. - PUBLIC DRAINAGE EASEMENT
 - P.I. - POINT OF INTERSECTION
 - P.O.B. - POINT OF BEGINNING
 - P.O.C. - POINT OF COMMENCEMENT
 - P.T. - POINT OF TANGENCY
 - P.S.M. - PROFESSIONAL SURVEYOR AND MAPPER
 - R - RADIUS
 - RAD. - RADIAL
 - R/W - RIGHT-OF-WAY
 - SEC. - SECTION
 - U.E. - UTILITY EASEMENT
 - W.M.M.E. - WATER MANAGEMENT MAINTENANCE EASEMENT
 - S.S.E. - SAFE SITE EASEMENT
 - N 737648.0171
E 905258.2326 - DENOTES STATE PLANE COORDINATES

THIS INSTRUMENT PREPARED BY
 DAVID L. SMITH, P.S.M. 4951, STATE OF FLORIDA
 LAWSON, NOBLE AND WEBB, INC.
 ENGINEERS PLANNERS SURVEYORS
 420 COLUMBIA DRIVE
 WEST PALM BEACH, FLORIDA 33409
 LB-6674

NOTE:
 COORDINATES SHOWN ARE GRID COORDINATES
 DATUM = NAD 83 (1980 ADJUSTMENT)
 ZONE = FLORIDA EAST ZONE
 LINEAR UNIT = U.S. SURVEY FEET
 COORDINATE SYSTEM 1983 STATE PLANE
 TRANSVERSE MERCATOR PROJECTION
 ALL DISTANCES ARE GROUND
 SCALE FACTOR = 1.0000077
 N 01°08'53" E (PLAT BEARING)
 N 01°08'53" E (GRID BEARING)
 NO ROTATION