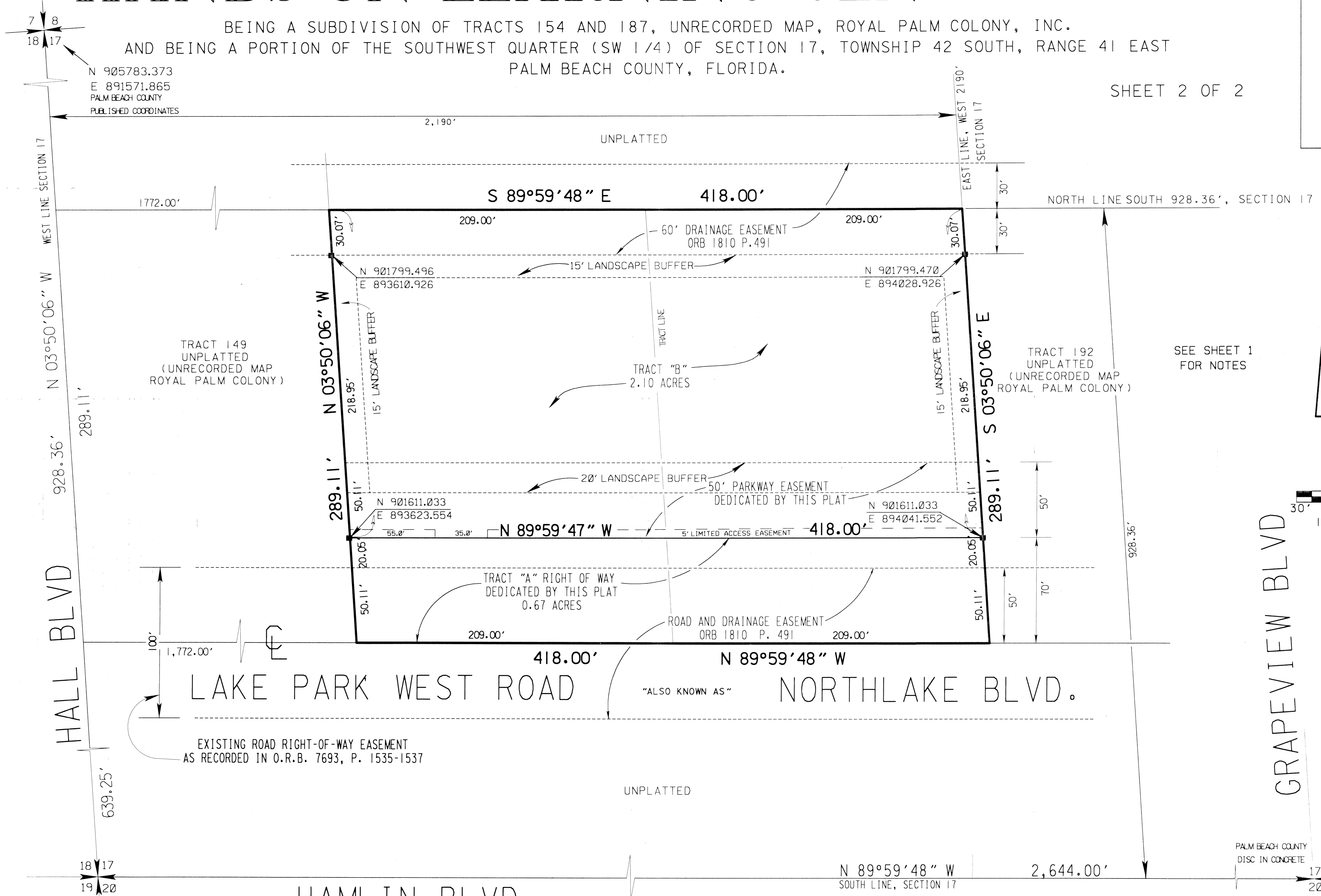


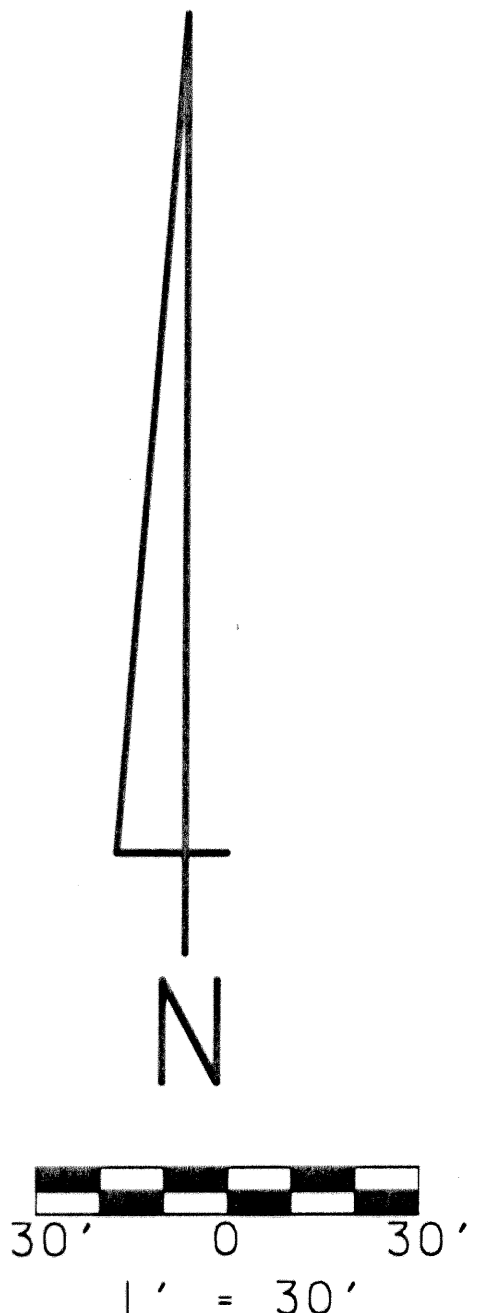
HANDS ON LEARNING CENTER PLAT

BEING A SUBDIVISION OF TRACTS 154 AND 187, UNRECORDED MAP, ROYAL PALM COLONY, INC.
AND BEING A PORTION OF THE SOUTHWEST QUARTER (SW 1/4) OF SECTION 17, TOWNSHIP 42 SOUTH, RANGE 41 EAST
PALM BEACH COUNTY, FLORIDA.

SHEET 2 OF 2



SEE SHEET 1 FOR NOTES



SUBDIVISION: HANDS ON LEARNING CENTER
 BOOK: 47
 PAGE: 46
 PLANNED ZONE: B
 EDICED MAP: # 050 B
 QUADRANT: 73
 ZONING: AR
 NO. 100-1943
 DATE: 10/00
 FLD. NAME:

N 900903.322
 E 891898.981
 PALM BEACH COUNTY
 PUBLISHED COORDINATES
 DISC IN CONCRETE

HAMLIN BLVD

IN KEEPING WITH LOCAL PRACTICES, THE DISTANCES CALLED FOR
 IN THE DESCRIPTION ARE MEASURED ALONG THE SECTION LINES
 RATHER THAN PERPENDICULAR TO THE SECTION LINES.



PALM BEACH COUNTY
 PUBLISHED COORDINATES
 DISC IN CONCRETE
 N 900903.168
 E 894543.025

5621-000