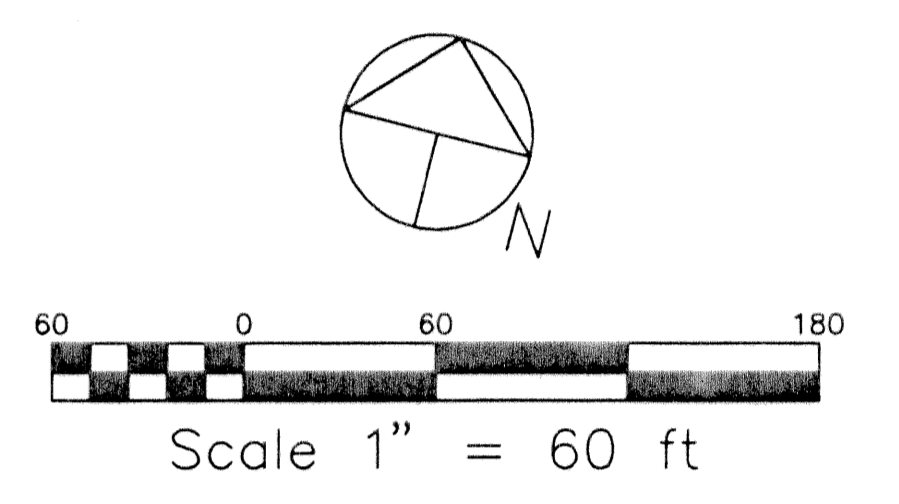
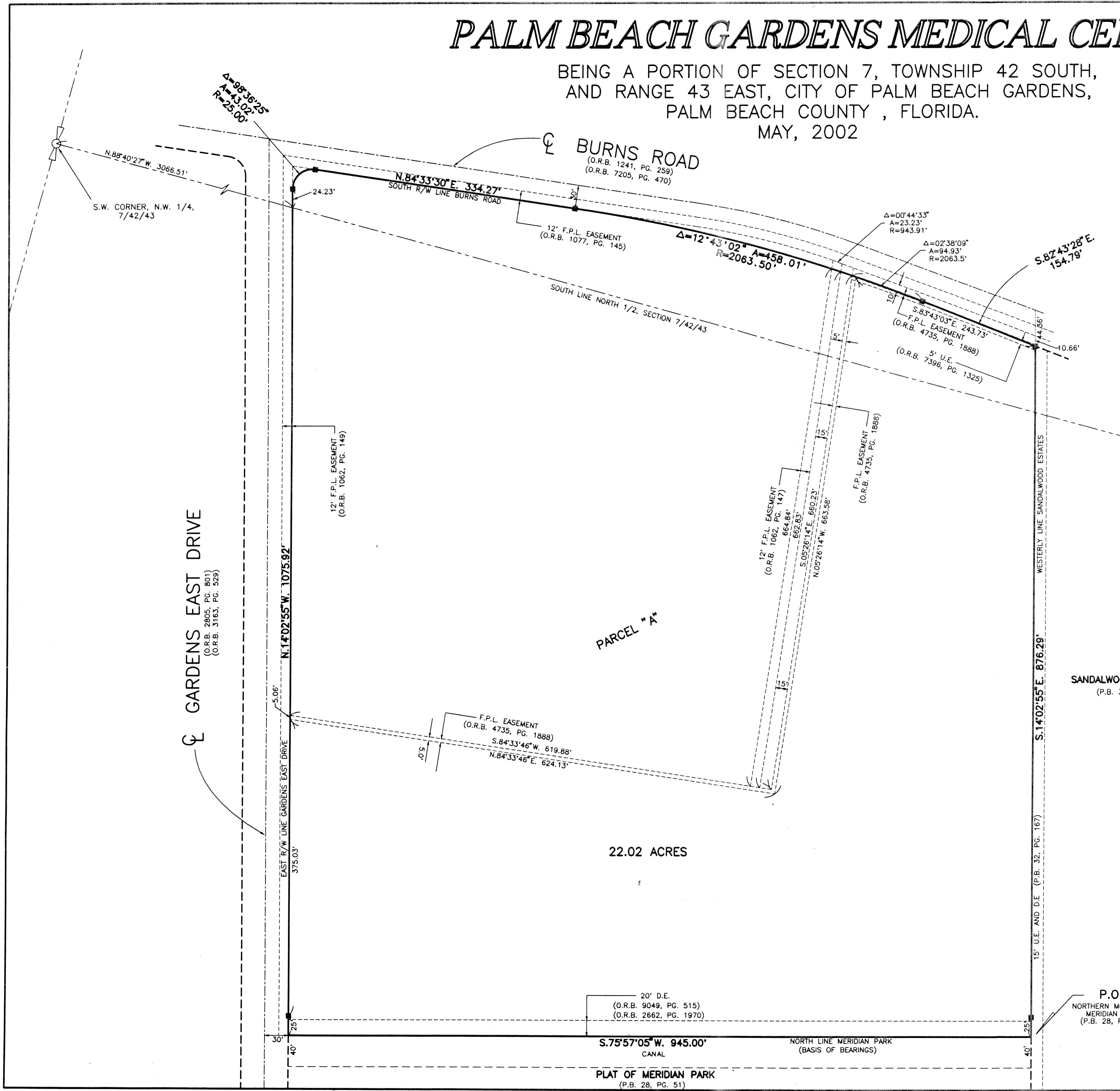


PALM BEACH GARDENS MEDICAL CENTER

BEING A PORTION OF SECTION 7, TOWNSHIP 42 SOUTH,
AND RANGE 43 EAST, CITY OF PALM BEACH GARDENS,
PALM BEACH COUNTY, FLORIDA.
MAY, 2002

SHEET 2 OF 2



ABBREVIATIONS AND SYMBOLS

- 1. =Denotes Set Permanent Reference Monuments (P.R.M.'s).
Stamped P.R.M. L.S. # 3357.
- 2. ϕ =Centerline.
- 3. R/W =Right of Way
- 4. P.B. =Plat Book.
- 5. P.G.(S) =Pages.
- 6. SEC. =Section.
- 7. TWP. =Township.
- 8. RGE. =Range.
- 9. U.E. =Utility Easement.
- 10. D.E. =Drainage Easement.
- 11. D.B. =Deed Book
- 12. A =Arc Length.
- 13. Δ =Central Angle.
- 14. R =Radius.
- 15. C.B. =Chord Bearing.
- 16. O.R.B. =Official Record Book.
- 17. R.P.B. =Road Plat Book.
- 18. L.A.E. =Limited Access Easement.
- 19. P.O.C. =Point of Commencement.
- 20. P.O.B. =Point of Beginning.
- 21. P.B.C. =Palm Beach County.
- 22. F.N.D. =Found.
- 23. ESM'T =Easement
- 24. W'y =Westerly
- 25. F.P.L. =Florida Power and Light

PALM BEACH GARDENS MEDICAL CENTER

WALLACE SURVEYING
CORP. LICENSED SURVEYOR # 4044
801 NORTHPORT PARKWAY, SUITE 117, WEST PALM BEACH, FLORIDA 33411 (407) 840-6611

FIELD:	JOB NO.: 85-005E	F.B. PG.
OFFICE: M.B.	DATE: MAY, 2002	DWG. NO. 85-005-1
CYC:	REF:	SHEET 2 OF 2